



I. 2015–16 AT A GLANCE

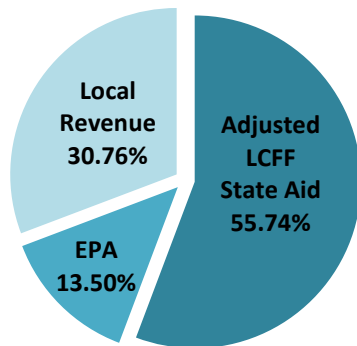


LCFF Funding Detail

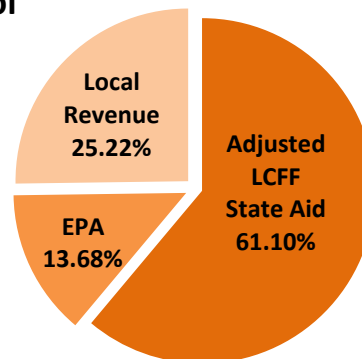
Sources	School Districts	Charter Schools	School District & Charter Subtotal	County Offices of Education (COEs)	Statewide Total
LCFF State Aid before Minimum State Aid (MSA)	\$ 26,686,640,562	\$ 2,876,428,167	\$ 29,563,068,729	\$ 375,287,656	\$ 29,938,356,385
Additional State Aid for MSA Guarantee	115,465,609	886,107	116,351,716	72,575,099	188,926,815
Adjusted LCFF State Aid (subtotal)	26,802,106,171	2,877,314,274	29,679,420,445	447,862,755	30,127,283,200
Education Protection Account (EPA) State Aid	6,490,245,864	644,213,082	7,134,458,946	67,439,250	7,201,898,196
Local Revenue/In-Lieu of Property Taxes*	14,790,890,936	1,187,684,287	15,978,575,223	511,003,695	16,489,578,918
Total LCFF Funding Sources	\$ 48,083,242,971	\$ 4,709,211,643	\$ 52,792,454,614	\$ 1,026,305,700	\$ 53,818,760,314

*Amount does not include excess local revenue.

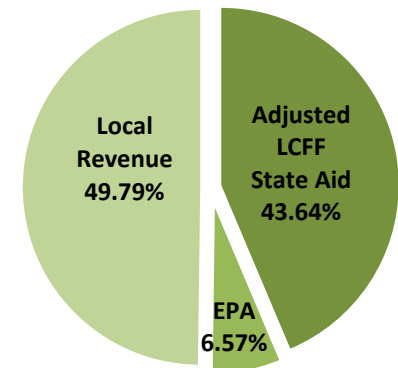
School District Funding



Charter School Funding



COE Funding



I. 2015–16 AT A GLANCE

Remaining Need Calculation*	School Districts	Charter Schools	Total
2015–16 LCFF Target Entitlement	\$ 53,012,934,658	\$ 5,194,814,259	\$ 58,207,748,917
Less LCFF Floor, OR LCFF Target Amount for LEAs Funded at the LCFF Target**	(42,239,171,656)	(4,167,689,585)	(46,406,861,241)
Less Current Year Gap Funding (Based on Statewide Gap Rate of 52.56%)	(5,662,432,984)	(539,832,258)	(6,202,265,242)
Statewide Remaining Need	\$ 5,111,330,018	\$ 487,292,416	\$ 5,598,622,434

*Remaining Need Calculation is not applicable to COEs; as of 2014-15, all COEs are either funded at the Target or above based on “hold harmless” provisions of *Education Code* Section 2575(g)(2).

**Final determination of LEAs funded at the LCFF Target is made at the Second Principal Apportionment.

II. COUNTY OFFICE OF EDUCATION DATA

LCFF Funding Summary

LCFF Entitlement	Number of COEs	Amount
Funding Based on LCFF Target*	24	\$ 257,944,249
Funding Based on “Hold Harmless” provisions of <i>Education Code</i> Section 2575(g)(2)	34	\$ 695,618,188

Minimum State Aid (MSA)	
Number of COEs Receiving Additional State Aid for MSA Guarantee	18
Amount of Additional State Aid for MSA Guarantee	\$ 72,575,099

*Final determination of COEs funded at the LCFF Target is made at the Second Principal Apportionment.

LCFF Target Entitlement Calculation

LCFF Target Components	Number of COEs Represented	Amount
Base Grant Funding	55	\$ 195,462,716
Supplemental Grant Funding	55	61,689,833
Concentration Grant Funding	55	<u>27,617,760</u>
Alternative Education Grant (subtotal)		\$ 284,770,309
Operations Grant Funding	58	447,344,965
Add-on Funding	37	<u>30,813,281</u>
Total LCFF Target Entitlement		\$ 762,928,555

Alternative Education Grant Average Daily Attendance (ADA)	
Non-Juvenile Court School ADA	9,865.94
Juvenile Court School ADA	7,237.08
Total County Funded ADA	17,103.02
Unduplicated Pupil Percentage (UPP)	
Average UPP (Non-Juvenile Court School)	86.19%
Lowest non-zero UPP (Non-Juvenile Court School)	45.74%

III. SCHOOL DISTRICT AND CHARTER SCHOOL DATA

LCFF Transition Entitlement Summary

LCFF Transition Components	School Districts Receiving Funding			Charter Schools Receiving Funding			Total	
	Number	% of Districts	Amount	Number	% of Charters	Amount	Number of LEAs	Amount
LCFF Floor Entitlement	903	95%	\$ 42,189,807,055	1,176	97%	\$ 4,105,931,460	2,081	\$ 46,295,738,515
Current Year Gap Funding	903	95%	5,662,432,984	1,176	97%	539,832,258	2,081	6,202,265,242
LCFF Target Entitlement*	43	5%	49,364,601	29	2%	61,758,125	72	111,122,726
Economic Recovery Target Payments	122	13%	22,198,551	25	2%	766,466	147	22,965,017
State Aid for MSA Guarantee	150	16%	115,465,609	18	1%	886,107	168	116,351,716
Miscellaneous Adjustments	8	1%	(1,226,325)	<i>not applicable to charter schools</i>			8	(1,226,325)
Total LCFF Transition Entitlement**			\$ 48,038,042,475			\$ 4,709,174,416		\$ 52,747,216,891

*Final determination of LEAs funded at the LCFF Target is made at the Second Principal Apportionment.

**Total LCFF Transition Entitlement is less than Total LCFF Funding Sources (shown on page 1) due to EPA State Aid minimum guarantee.

LCFF Target Entitlement Calculation

LCFF Target Components	School Districts Represented			Charter Schools Represented			Total	
	Number	% of Districts	Amount	Number	% of Charters	Amount	Number of LEAs	Amount
Base Grant Funding*	911	96%	\$ 43,052,237,013	1,205	99.8%	\$ 4,396,509,061	2,116	\$ 47,448,746,074
Supplemental Grant Funding	946	100%	5,407,403,346	1,203	99.7%	535,572,625	2,149	5,942,975,971
Concentration Grant Funding	563	60%	3,128,601,091	685	56.8%	262,732,573	1,248	3,391,333,664
Necessary Small School (NSS) Allowance	118	12%	104,287,937	<i>not applicable to charter schools</i>			118	104,287,937
Add-on Funding	917	97%	1,320,405,271	<i>not applicable to charter schools</i>			917	1,320,405,271
Total LCFF Target Entitlement			\$ 53,012,934,658			\$ 5,194,814,259		\$ 58,207,748,917

*Some school districts are fully funded through NSS and do not receive Base Grant Funding; some charter schools have no Base Grant Funding due to zero funded ADA.

Total Funded ADA by Grade Span (includes NSS ADA)

LEA Type	Number of LEAs	TK/K-3	4-6	7-8	9-12	TOTAL ADA
School Districts	946	1,705,823.39	1,269,075.33	818,578.12	1,659,415.38	5,452,892.22
Charter Schools	1,207	152,878.00	115,871.33	88,568.21	194,561.26	551,878.80
TOTAL	2,153	1,858,701.39	1,384,946.66	907,146.33	1,853,976.64	6,004,771.02

DATA SOURCE: 2015–16 Annual Principal Apportionment certified funding exhibits for all active LEAs for the fiscal year (<http://www.cde.ca.gov/fg/aa/pa/pa1617.asp>)

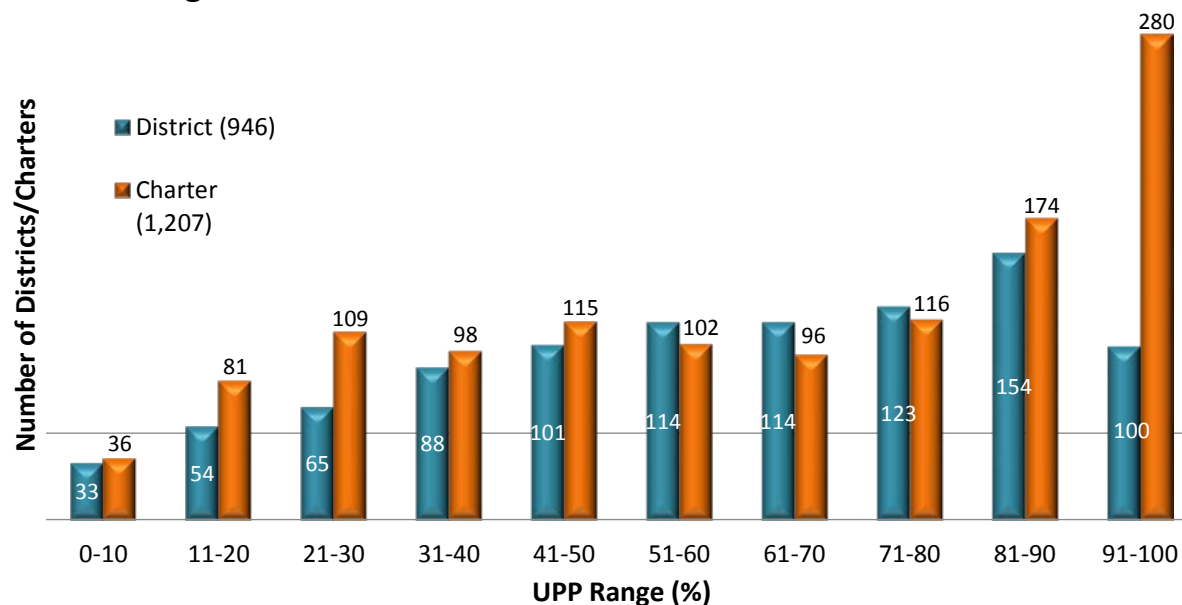
III. SCHOOL DISTRICT AND CHARTER SCHOOL DATA

Unduplicated Pupil Percentage (UPP)*

School Districts' Average UPP	59.51%
Districts with UPP of 100%	4
Districts with UPP of zero	0
Charter Schools' Average UPP	62.55%
Charters with UPP of 100%	10
Charters with UPP of zero	2

*UPP is based on data from current and two prior years and is used in determining the LEA's Supplemental and Concentration Grant funding in the LCFF target entitlement.

UPP Ranges for School Districts and Charter Schools



Ten Largest School Districts (based on ADA)

School District Name	ADA	Target per ADA**	UPP
Los Angeles Unified	474,135.40	\$11,480	83.82%
San Diego Unified	104,018.32	\$9,927	63.39%
Long Beach Unified	76,070.44	\$9,790	69.29%
Fresno Unified	66,746.68	\$10,647	87.56%
Elk Grove Unified	59,708.09	\$9,047	58.81%
Corona-Norco Unified	51,936.37	\$8,751	47.64%
Santa Ana Unified	51,132.50	\$10,945	94.24%
San Francisco Unified	51,117.68	\$10,155	65.50%
Capistrano Unified	48,384.64	\$8,399	23.48%
San Bernardino City Unified	47,513.91	\$11,231	92.40%

Ten Largest Charter Schools (based on ADA)

Charter School Name	ADA	Target per ADA**	UPP
River Springs Charter	5,707.23	\$8,472	47.77%
Visions In Education	4,972.79	\$8,880	51.65%
Granada Hills Charter High	4,331.95	\$9,725	52.50%
Opportunities for Learning - Baldwin Park II	3,829.61	\$11,668	86.93%
El Camino Real Charter High	3,567.03	\$9,200	22.67%
Options for Youth-Victorville Charter	3,204.09	\$11,180	80.63%
Birmingham Community Charter High	3,083.18	\$11,566	85.01%
Grover Cleveland Charter High	3,079.83	\$10,451	66.07%
California Virtual Academy @ Los Angeles	2,931.89	\$9,190	60.41%
Palisades Charter High	2,844.37	\$9,360	31.74%

**LCFF Target per ADA is derived by dividing LCFF Target Entitlement by Funded ADA. This amount does not represent actual funding. Target per ADA rates vary due to differences in UPP, the distribution of ADA between the grade spans, and other components of the Target Entitlement.