

# Local Control Funding Formula (LCFF) Statewide Fingertip Facts 2022–23 Fiscal Year – First Principal Apportionment (as of February 2023)

Prepared by: CA Dept. of Education  
School Fiscal Services Division

## 2022–23 AT A GLANCE

### Funding Sources:

- \$39.3 Billion from State General Fund
- \$23.6 Billion from Local Revenue
- \$12.6 Billion from Education Protection Account (EPA)

**\$75.5  
Billion**

### Funding Apportioned:

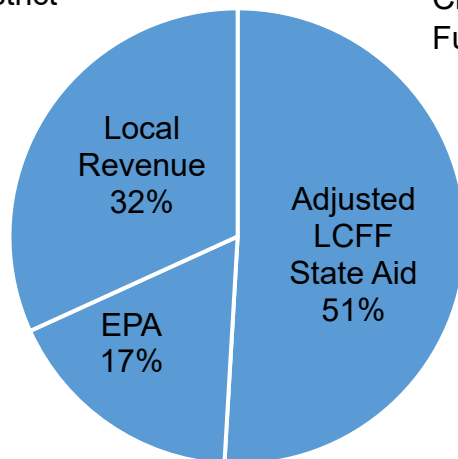
- \$66.3 Billion to School Districts
- \$7.9 Billion to Charter Schools
- \$1.3 Billion to County Offices of Education (COE)

## LCFF Funding Detail

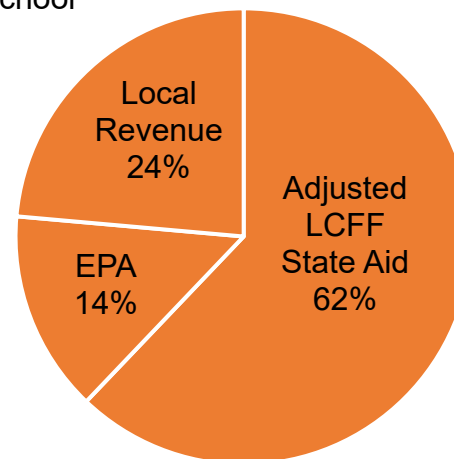
Sources	School Districts	Charter Schools	School District & Charter Subtotal	County Offices of Education	Statewide Total
LCFF State Aid before Minimum State Aid (MSA)	\$33,592,550,862	\$4,948,206,487	\$38,540,757,349	\$372,722,075	<b>\$38,913,479,424</b>
Additional State Aid for MSA Guarantee, Other LCFF State Aid for COEs	168,078,172	504,603	168,582,775	237,913,236	<b>406,496,011</b>
Adjusted LCFF State Aid (subtotal)	33,760,629,034	4,948,711,090	38,709,340,124	610,635,311	<b>39,319,975,435</b>
EPA State Aid	11,450,685,703	1,138,106,239	12,588,791,942	36,691,986	<b>12,625,483,928</b>
Local Revenue/In-lieu of Property Taxes <sup>1</sup>	21,078,763,596	1,878,976,386	22,957,739,982	647,630,925	<b>23,605,370,907</b>
<b>Total LCFF Funding Sources</b>	<b>\$66,290,078,333</b>	<b>\$7,965,793,715</b>	<b>\$74,255,872,048</b>	<b>\$1,294,958,222</b>	<b>\$75,550,830,270</b>

<sup>1</sup>Amounts in table and pie charts do not include excess local revenue.

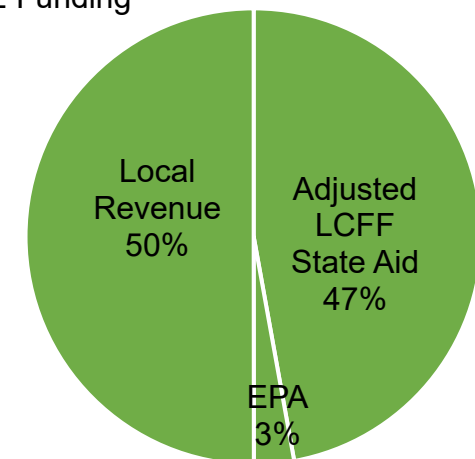
School District Funding



Charter School Funding



COE Funding



## SCHOOL DISTRICT AND CHARTER SCHOOL DATA

### Summary

LCFF Entitlement Component	District Count	% of Districts	District Funding	Charter Count	% of Charters	Charter Funding	Total Count	Total Funding
Base Grant Funding <sup>2</sup>	905	96.4%	\$52,669,758,467	1,266	100.0%	\$6,621,896,131	2,171	\$59,291,654,598
Supplemental Grant Funding	939	100.0%	6,652,179,159	1,266	100.0%	812,711,766	2,205	7,464,890,925
Concentration Grant Funding	559	59.5%	5,003,217,801	749	59.2%	498,154,797	1,308	5,501,372,598
Necessary Small School (NSS) Allowance	108	11.5%	134,490,908	n/a	n/a	n/a	108	134,490,908
Add-on Funding	933	99.4%	1,606,366,378	626	49.4%	32,511,502	1559	1,638,877,880
Miscellaneous Adjustments <sup>3</sup>	0	0.0%	0	0	0.0%	0	0	0
State Aid for MSA Guarantee	145	15.4%	168,078,172	12	0.9%	504,603	157	168,582,775
<b>Total LCFF Entitlement<sup>4</sup></b>	<b>n/a</b>	<b>n/a</b>	<b>\$66,234,090,885</b>	<b>n/a</b>	<b>n/a</b>	<b>\$7,965,778,799</b>	<b>n/a</b>	<b>\$74,199,869,684</b>

<sup>2</sup>Some school districts are fully funded through NSS and do not receive Base Grant Funding; some charter schools have no Base Grant Funding due to zero funded ADA.

<sup>3</sup> Adjustments for special legislation, instructional time penalties, and class size penalties.

<sup>4</sup>Total LCFF Entitlement is less than Total LCFF Funding Sources (shown on page 1) due to EPA State Aid minimum guarantee.

### Ten Largest School Districts (based on Funded ADA)

School District Name	ADA	UPP
Los Angeles Unified	397,593.92	86.00%
San Diego Unified	95,510.34	58.50%
Long Beach Unified	66,698.87	65.04%
Fresno Unified	66,408.59	88.26%
Elk Grove Unified	59,275.25	50.44%
Corona-Norco Unified	50,100.05	61.27%
San Francisco Unified	49,040.26	58.74%
San Bernardino City Unified	45,223.56	90.69%
Capistrano Unified	43,526.36	30.13%
Santa Ana Unified	42,645.24	84.46%

### Ten Largest Charter Schools (based on Funded ADA)

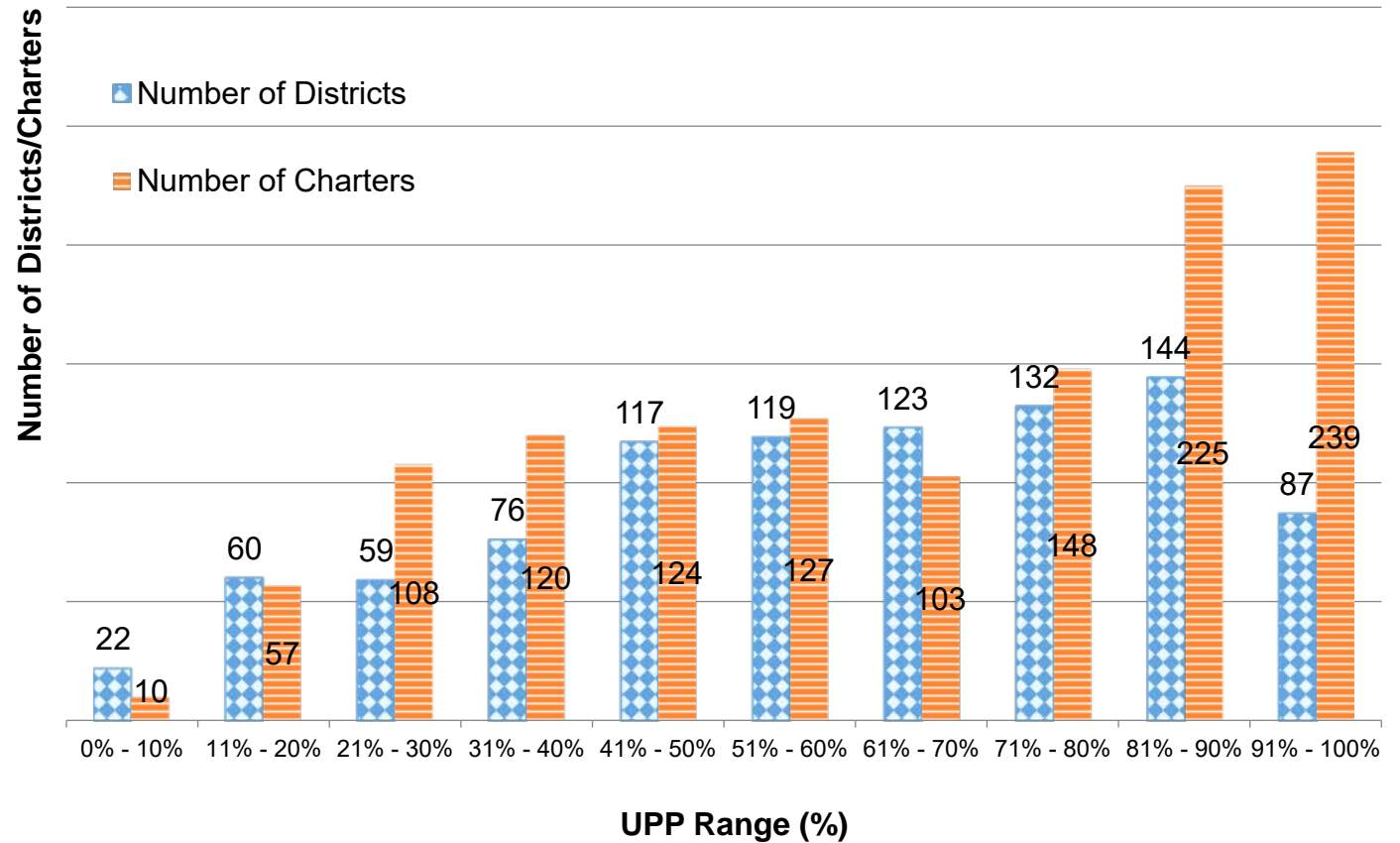
Charter School Name	ADA	UPP
Blue Ridge Academy	6,665.52	42.09%
River Springs Charter	6,654.99	57.60%
Visions In Education	6,275.23	53.18%
Granada Hills Charter	5,585.03	50.35%
California Virtual Academy @ Los Angeles	5,201.49	73.29%
California Connections Academy Southern California	4,928.31	48.87%
Pacific Coast Academy	4,851.77	38.99%
Mission Vista Academy	4,761.77	42.42%
Heartland Charter	4,701.54	42.15%
Cabrillo Point Academy	4,246.08	34.59%

## Total Funded ADA by Grade Span (includes NSS ADA)

LEA Type	Number of LEAs	Grades TK/K-3	Grades 4-6	Grades 7-8	Grades 9-12	TOTAL ADA
School Districts	939	1,552,557.94	1,167,661.72	789,341.43	1,635,339.76	5,144,900.85
Charter Schools	1,268	175,914.22	134,456.98	104,939.57	226,978.43	642,289.20
<b>TOTAL</b>	<b>2,207</b>	<b>1,728,472.16</b>	<b>1,302,118.70</b>	<b>894,281.00</b>	<b>1,862,318.19</b>	<b>5,787,190.05</b>

## Unduplicated Pupil Percentage (UPP) Ranges for School Districts and Charter Schools

UPP Range	District Count	Charter Count
0%-10%	22	10
11%-20%	60	57
21%-30%	59	108
31%-40%	76	120
41%-50%	117	124
51%-60%	119	127
61%-70%	123	103
71%-80%	132	148
81%-90%	144	225
91%-100%	87	239
<b>Total</b>	<b>939</b>	<b>1,261</b>



## COUNTY OFFICE OF EDUCATION DATA

### LCFF Funding Summary

LCFF Entitlement	Number of COEs	Amount
Funding Based on LCFF Target <sup>5</sup>	41	\$605,549,609
Funding Based on “Hold Harmless” provisions of <i>EC</i> Section 2575(g)(2)	17	\$450,871,391

<sup>5</sup>Final determination of LEAs funded at the LCFF Target is made at the Second Principal (P-2) Apportionment.

### LCFF Target Entitlement Calculation

LCFF Target Components	Number of COEs	Amount
Base Grant Funding	51	\$130,307,082
Supplemental Grant Funding	49	39,600,344
Concentration Grant Funding	49	16,903,520
Alternative Education Grant (subtotal)	n/a	\$186,810,946
Operations Grant Funding	58	766,156,905
Add-on Funding	36	30,684,488
<b>Total LCFF Target Entitlement</b>	<b>n/a</b>	<b>\$983,652,339</b>

### Alternative Education Grant Average Daily Attendance (ADA)

Non-Juvenile Court School ADA	6,136.08
Juvenile Court School ADA	3,318.15
<b>Total County Funded ADA</b>	<b>9,454.23</b>

### Unduplicated Pupil Percentage (UPP)

Average UPP (Non-Juvenile Court School)	79.19%
Lowest non-zero UPP (Non-Juvenile Court School)	46.34%

### Additional State Aid

Additional State Aid Component	Number of COEs	Amount
Additional State Aid for Minimum State Aid Guarantee	24	\$143,522,788
State Aid Pursuant to <i>EC</i> Section 2575.1	24	8,290,451
State Aid Pursuant to <i>EC</i> Section 2575.2	58	86,099,997
<b>Total Additional State Aid</b>	<b>n/a</b>	<b>\$237,913,236</b>