



**California Department of Education
Assessment Development &
Administration Division**



**California Assessment of Student
Performance and Progress**

**California Spanish Assessment
2018–2019 Technical Report**

Chapter 7 Appendices

**Submitted August 18, 2020
Educational Testing Service**



Contract No. CN150012

Table of Contents

Appendix 7.A: Classical Item Analyses	1
Appendix 7.B: DIF Analyses	31
Appendix 7.C: IRT Analyses Results	32
Appendix 7.D: Item Parameters for the Linking Set for High School	67
Appendix 7.E: Response Time Analysis	70
Appendix 7.F: Reliability Analyses	76

List of Tables

Table 7.A.1 Item Difficulty Distributions by Claim	1
Table 7.A.2 Item-Total Correlation Distributions by Claim	2
Table 7.A.3 Item Difficulty and Item-Total Correlation by Item on the Regular Form for Grade Three	3
Table 7.A.4 Item Difficulty and Item-Total Correlation by Item on the Accommodated Form for Grade Three	5
Table 7.A.5 Item Difficulty and Item-Total Correlation by Item on the Regular Form for Grade Four	7
Table 7.A.6 Item Difficulty and Item-Total Correlation by Item on the Accommodated Form for Grade Four	9
Table 7.A.7 Item Difficulty and Item-Total Correlation by Item on the Regular Form for Grade Five	11
Table 7.A.8 Item Difficulty and Item-Total Correlation by Item on the Accommodated Form for Grade Five	13
Table 7.A.9 Item Difficulty and Item-Total Correlation by Item on the Regular Form for Grade Six	15
Table 7.A.10 Item Difficulty and Item-Total Correlation by Item on the Accommodated Form for Grade Six	17
Table 7.A.11 Item Difficulty and Item-Total Correlation by Item on the Regular Form for Grade Seven	19
Table 7.A.12 Item Difficulty and Item-Total Correlation by Item on the Accommodated Form for Grade Seven	21
Table 7.A.13 Item Difficulty and Item-Total Correlation by Item on the Regular Form for Grade Eight	23
Table 7.A.14 Item Difficulty and Item-Total Correlation by Item on the Accommodated Form for Grade Eight	25
Table 7.A.15 Item Difficulty and Item-Total Correlation by Item on the Regular Form for High School	27
Table 7.A.16 Item Difficulty and Item-Total Correlation by Item on the Accommodated Form for High School	29
Table 7.B.1 Gender DIF Classifications Summary by Grade Level	31
Table 7.C.1 Item Difficulty Parameter Distribution by Claim for Grade Three	32
Table 7.C.2 Item Difficulty Parameter Distribution by Claim for Grade Four	33
Table 7.C.3 Item Difficulty Parameter Distribution by Claim for Grade Five	34
Table 7.C.4 Item Difficulty Parameter Distribution by Claim for Grade Six	35
Table 7.C.5 Item Difficulty Parameter Distribution by Claim for Grade Seven	36

Table 7.C.6 Item Difficulty Parameter Distribution by Claim for Grade Eight.....	37
Table 7.C.7 Item Difficulty Parameter Distribution by Claim for High School.....	38
Table 7.C.8 IRT Item Difficulty on the Regular Form for Grade Three.....	39
Table 7.C.9 IRT Item Difficulty on the Accommodated Form for Grade Three	41
Table 7.C.10 IRT Item Difficulty on the Regular Form for Grade Four.....	43
Table 7.C.11 IRT Item Difficulty on the Accommodated Form for Grade Four	45
Table 7.C.12 IRT Item Difficulty on the Regular Form for Grade Five	47
Table 7.C.13 IRT Item Difficulty on the Accommodated Form for Grade Five.....	49
Table 7.C.14 IRT Item Difficulty on the Regular Form for Grade Six.....	51
Table 7.C.15 IRT Item Difficulty on the Accommodated Form for Grade Six.....	53
Table 7.C.16 IRT Item Difficulty on the Regular Form for Grade Seven.....	55
Table 7.C.17 IRT Item Difficulty on the Accommodated Form for Grade Seven	57
Table 7.C.18 IRT Item Difficulty on the Regular Form for Grade Eight.....	59
Table 7.C.19 IRT Item Difficulty on the Accommodated Form for Grade Eight	61
Table 7.C.20 IRT Item Difficulty on the Regular Form for High School.....	63
Table 7.C.21 IRT Item Difficulty on the Accommodated Form for High School	65
Table 7.D.1 <i>B</i> -parameters from the Operational Test and Field Test for High School.....	68
Table 7.E.1 Total Testing Time (in Minutes) at Each Raw Score Interval—Grade Three	70
Table 7.E.2 Total Testing Time (in Minutes) at Each Raw Score Interval—Grade Four.....	70
Table 7.E.3 Total Testing Time (in Minutes) at Each Raw Score Interval—Grade Five	71
Table 7.E.4 Total Testing Time (in Minutes) at Each Raw Score Interval—Grade Six	71
Table 7.E.5 Total Testing Time (in Minutes) at Each Raw Score Interval—Grade Seven	72
Table 7.E.6 Total Testing Time (in Minutes) at Each Raw Score Interval—Grade Eight.....	72
Table 7.E.7 Total Testing Time (in Minutes) at Each Raw Score Interval—Grade Nine.....	73
Table 7.E.8 Total Testing Time (in Minutes) at Each Raw Score Interval—Grade Ten.....	73
Table 7.E.9 Total Testing Time (in Minutes) at Each Raw Score Interval—Grade Eleven ...	74
Table 7.E.10 Total Testing Time (in Minutes) at Each Raw Score Interval—Grade Twelve.	74
Table 7.E.11 Total Testing Time (in Minutes) at Each Raw Score Interval—High School, All Grades.....	75
Table 7.F.1 Reliabilities and SEMs by Gender	76
Table 7.F.2 Reliabilities and SEMs by Economic Status	77
Table 7.F.3 Reliabilities and SEMs by Special Education Services.....	78
Table 7.F.4 Reliabilities and SEMs by Attendance in U.S. Schools.....	79
Table 7.F.5 Reliabilities and SEMs by Spanish Instruction Status.....	80
Table 7.F.6 Reliabilities and SEMs by English Proficiency.....	81
Table 7.F.7 Reliabilities and SEMs by English Proficiency (Continued)	82
Table 7.F.8 Scale Score Conversion Table with CSEMs of the Regular Form for Grade Three	83
Table 7.F.9 Scale Score Conversion Table with CSEMs of the Accommodated Form for Grade Three.....	85
Table 7.F.10 Scale Score Conversion Table with CSEMs of the Regular Form for Grade Four.....	87
Table 7.F.11 Scale Score Conversion Table with CSEMs of the Accommodated Form for Grade Four.....	89
Table 7.F.12 Scale Score Conversion Table with CSEMs of the Regular Form for Grade Five	91

Table 7.F.13 Scale Score Conversion Table with CSEMs of the Accommodated Form for Grade Five.....	93
Table 7.F.14 Scale Score Conversion Table with CSEMs of the Regular Form for Grade Six	95
Table 7.F.15 Scale Score Conversion Table with CSEMs of the Accommodated Form for Grade Six	97
Table 7.F.16 Scale Score Conversion Table with CSEMs of the Regular Form for Grade Seven	99
Table 7.F.17 Scale Score Conversion Table with CSEMs of the Accommodated Form for Grade Seven	101
Table 7.F.18 Scale Score Conversion Table with CSEMs of the Regular Form for Grade Eight	103
Table 7.F.19 Scale Score Conversion Table with CSEMs of the Accommodated Form for Grade Eight	105
Table 7.F.20 Scale Score Conversion Table with CSEMs of the Regular Form for High School	107
Table 7.F.21 Scale Score Conversion Table with CSEMs of the Accommodated Form for High School	109
Table 7.F.22 Reliability of Classification for Grade Three: Decision Accuracy, True Status on All Forms Average	111
Table 7.F.23 Reliability of Classification for Grade Three: Decision Consistency, Decision Made on a Single Form	111
Table 7.F.24 Reliability of Classification for Grade Four: Decision Accuracy, True Status on All Forms Average	111
Table 7.F.25 Reliability of Classification for Grade Four: Decision Consistency, Decision Made on a Single Form	111
Table 7.F.26 Reliability of Classification for Grade Five: Decision Accuracy, True Status on All Forms Average	112
Table 7.F.27 Reliability of Classification for Grade Five: Decision Consistency, Decision Made on a Single Form	112
Table 7.F.28 Reliability of Classification for Grade Six: Decision Accuracy, True Status on All Forms Average	112
Table 7.F.29 Reliability of Classification for Grade Six: Decision Consistency, Decision Made on a Single Form	112
Table 7.F.30 Reliability of Classification for Grade Seven: Decision Accuracy, True Status on All Forms Average	113
Table 7.F.31 Reliability of Classification for Grade Seven: Decision Consistency, Decision Made on a Single Form	113
Table 7.F.32 Reliability of Classification for Grade Eight: Decision Accuracy, True Status on All Forms Average	113
Table 7.F.33 Reliability of Classification for Grade Eight: Decision Consistency, Decision Made on a Single Form	113
Table 7.F.34 Reliability of Classification for High School: Decision Accuracy, True Status on All Forms Average	114
Table 7.F.35 Reliability of Classification for High School: Decision Consistency, Decision Made on a Single Form	114

List of Figures

Figure 7.D.1 *B*-parameters from the 2018–2019 operational administration and 2018 field test for the anchor set for high school 67

Appendix 7.A: Classical Item Analyses

Table 7.A.1 Item Difficulty Distributions by Claim

Grade	Claim	$0 \leq p < 0.2$	$0.2 \leq p < 0.4$	$0.4 \leq p < 0.6$	$0.6 \leq p < 0.8$	$0.8 \leq p \leq 1.0$	Total Number of Items	Mean p -value	Minimum p -value	Maximum p -value
Grade 3	Reading	1	16	13	3	0	33	0.40	0.15	0.64
Grade 3	Writing Mechanics	2	12	7	1	1	23	0.39	0.16	0.89
Grade 3	Listening	0	5	5	3	2	15	0.53	0.28	0.84
Grade 4	Reading	3	16	13	3	0	35	0.40	0.16	0.68
Grade 4	Writing Mechanics	0	5	13	4	1	23	0.50	0.21	0.80
Grade 4	Listening	0	3	6	9	0	18	0.56	0.22	0.78
Grade 5	Reading	2	15	16	2	0	35	0.40	0.12	0.69
Grade 5	Writing Mechanics	0	6	13	1	0	20	0.45	0.21	0.62
Grade 5	Listening	1	3	3	7	1	15	0.55	0.12	0.85
Grade 6	Reading	2	7	21	8	0	38	0.47	0.15	0.73
Grade 6	Writing Mechanics	2	7	9	4	0	22	0.43	0.04	0.79
Grade 6	Listening	1	4	4	5	2	16	0.55	0.15	0.86
Grade 7	Reading	1	17	14	0	0	32	0.38	0.04	0.56
Grade 7	Writing Mechanics	1	7	10	3	2	23	0.46	0.14	0.90
Grade 7	Listening	1	3	5	7	0	16	0.53	0.12	0.78
Grade 8	Reading	3	18	11	3	0	35	0.38	0.16	0.65
Grade 8	Writing Mechanics	0	10	8	4	0	22	0.43	0.21	0.80
Grade 8	Listening	1	3	7	3	1	15	0.52	0.15	0.86
High school	Reading	0	12	19	3	0	34	0.42	0.20	0.65
High school	Writing Mechanics	1	11	10	2	0	24	0.39	0.13	0.70
High school	Listening	0	1	11	2	0	14	0.51	0.23	0.68

Table 7.A.2 Item-Total Correlation Distributions by Claim

Grade	Claim	$r < 0$	$0 \leq r < 0.2$	$0.2 \leq r < 0.3$	$0.3 \leq r < 0.4$	$0.4 \leq r < 0.5$	$r \geq 0.5$	Total Number of Items	Mean r	Minimum r	Maximum r
Grade 3	Reading	1	4	5	8	6	9	33	0.38	-0.05	0.79
Grade 3	Writing Mechanics	1	4	7	3	6	2	23	0.32	-0.01	0.66
Grade 3	Listening	0	0	3	1	4	7	15	0.47	0.26	0.71
Grade 4	Reading	1	4	4	10	6	10	35	0.39	-0.02	0.67
Grade 4	Writing Mechanics	0	1	3	7	6	6	23	0.42	0.18	0.65
Grade 4	Listening	0	1	3	0	5	9	18	0.47	0.04	0.73
Grade 5	Reading	1	6	4	9	8	7	35	0.34	-0.12	0.66
Grade 5	Writing Mechanics	0	2	1	11	2	4	20	0.37	0.11	0.60
Grade 5	Listening	0	2	1	2	2	8	15	0.45	0.02	0.70
Grade 6	Reading	0	3	3	10	18	4	38	0.39	0.07	0.66
Grade 6	Writing Mechanics	2	5	3	4	3	5	22	0.30	-0.15	0.60
Grade 6	Listening	0	2	2	2	5	5	16	0.42	0.06	0.67
Grade 7	Reading	0	5	8	10	3	6	32	0.34	0.08	0.61
Grade 7	Writing Mechanics	0	5	7	3	3	5	23	0.33	0.02	0.64
Grade 7	Listening	1	0	2	2	7	4	16	0.41	-0.01	0.62
Grade 8	Reading	0	5	3	12	9	6	35	0.38	0.01	0.61
Grade 8	Writing Mechanics	1	6	1	6	5	3	22	0.32	-0.24	0.68
Grade 8	Listening	0	3	4	1	3	4	15	0.34	0.01	0.62
High school	Reading	2	4	5	6	8	9	34	0.41	-0.11	1.00
High school	Writing Mechanics	5	1	3	6	3	6	24	0.25	-0.92	0.69
High school	Listening	1	0	1	7	4	1	14	0.37	-0.02	0.52

Table 7.A.3 Item Difficulty and Item-Total Correlation by Item on the Regular Form for Grade Three

Item Sequence	p-value	r	Flag	Maximum Score Points	Item Type
1	0.89	0.32	[no flag]	1	Match
2	0.57	0.51	[no flag]	1	MC
3	0.61	0.30	[no flag]	1	InlineChoices
4	0.56	0.49	P	2	MC
5	0.64	0.60	[no flag]	2	InlineChoices
6	0.57	0.60	[no flag]	1	MC
7	0.35	0.26	[no flag]	1	MC
8	0.35	0.09	D P R	1	MC
9	0.44	0.43	[no flag]	1	MC
10	0.64	0.46	P	2	MC
11	0.41	0.35	[no flag]	1	MC
12	0.52	0.24	[no flag]	1	InlineChoices
13	0.40	0.54	[no flag]	1	MC
14	0.51	0.28	[no flag]	1	MC
15	0.37	0.37	[no flag]	1	MC
16	0.24	0.02	D P R	1	InlineChoices
17	0.30	0.45	[no flag]	1	MC
18	0.35	0.25	P	1	MC
19	0.43	0.28	[no flag]	2	MC
20	0.23	0.38	[no flag]	1	MC
21	0.24	0.22	P	1	InlineChoices
22	0.39	0.29	P	1	MC
23	0.53	0.49	[no flag]	1	InlineChoices
24	0.37	0.66	[no flag]	1	MC
25	0.32	0.25	[no flag]	1	MC
26	0.66	0.47	[no flag]	2	Composite
27	0.33	0.31	[no flag]	1	MC

Table 7.A.3 (continuation)

Item Sequence	p-value	r	Flag	Maximum Score Points	Item Type
28	0.67	0.59	[no flag]	2	InlineChoices
29	0.81	0.71	[no flag]	2	MC
30	0.58	0.55	[no flag]	1	MC
31	0.84	0.54	L	2	Zones
32	0.28	0.29	P	1	MC
33	0.50	0.65	[no flag]	1	Match
34	0.47	0.47	D P	2	MC
35	0.32	0.51	[no flag]	1	MC
36	0.62	0.79	[no flag]	1	MC
37	0.50	0.63	[no flag]	1	MC
38	0.32	0.36	[no flag]	2	Composite
39	0.52	0.54	[no flag]	1	MC
40	0.55	0.42	[no flag]	1	MC
41	0.34	0.49	[no flag]	1	MC
42	0.33	0.44	[no flag]	1	MC
43	0.21	0.19	D P R	1	InlineChoices
44	0.41	0.24	P	1	MC
45	0.24	0.48	P	2	Match
46	0.60	0.36	[no flag]	1	MC
47	0.51	0.39	[no flag]	1	InlineChoices
48	0.28	0.18	P R	1	MC
49	0.26	-0.05	D P R	1	InlineChoices
50	0.39	0.42	[no flag]	1	MC
51	0.38	0.50	[no flag]	1	MC
52	0.25	0.52	P	1	Match

Table 7.A.4 Item Difficulty and Item-Total Correlation by Item on the Accommodated Form for Grade Three

Item Sequence	p -value	r	Flag	Maximum Score Points	Item Type
1	0.41	0.46	[no flag]	1	MC
2	0.57	0.51	[no flag]	1	MC
3	0.56	0.49	P	2	MC
4	0.39	0.49	[no flag]	1	MC
5	0.64	0.60	[no flag]	2	InlineChoices
6	0.57	0.60	[no flag]	1	MC
7	0.35	0.26	[no flag]	1	MC
8	0.45	0.46	[no flag]	1	MC
9	0.35	0.09	D P R	1	MC
10	0.32	0.33	[no flag]	1	MC
11	0.45	0.35	P	2	MC
12	0.41	0.35	[no flag]	1	MC
13	0.52	0.24	[no flag]	1	InlineChoices
14	0.51	0.28	[no flag]	1	MC
15	0.40	0.54	[no flag]	1	MC
16	0.24	0.02	D P R	1	InlineChoices
17	0.37	0.37	[no flag]	1	MC
18	0.35	0.25	P	1	MC
19	0.30	0.45	[no flag]	1	MC
20	0.23	0.38	[no flag]	1	MC
21	0.24	0.22	P	1	InlineChoices
22	0.53	0.49	[no flag]	1	InlineChoices
23	0.37	0.66	[no flag]	1	MC
24	0.32	0.25	[no flag]	1	MC
25	0.26	0.21	[no flag]	1	MC
26	0.18	0.21	A D P	1	MC
27	0.33	0.31	[no flag]	1	MC

Table 7.A.4 (continuation)

Item Sequence	p-value	r	Flag	Maximum Score Points	Item Type
28	0.81	0.71	[no flag]	2	MC
29	0.58	0.55	[no flag]	1	MC
30	0.35	0.43	[no flag]	1	MC
31	0.28	0.29	P	1	MC
32	0.46	0.11	D P R	2	MC
33	0.41	0.35	P	1	MC
34	0.47	0.47	D P	2	MC
35	0.50	0.60	[no flag]	1	MC
36	0.62	0.79	[no flag]	1	MC
37	0.50	0.63	[no flag]	1	MC
38	0.45	0.56	[no flag]	1	MC
39	0.52	0.54	[no flag]	1	MC
40	0.34	0.49	[no flag]	1	MC
41	0.16	0.12	A D P R	1	MC
42	0.37	0.13	P R	1	InlineChoices
43	0.28	-0.01	D P R	1	MC
44	0.21	0.19	D P R	1	InlineChoices
45	0.41	0.24	P	1	MC
46	0.40	0.13	R	1	MC
47	0.60	0.36	[no flag]	1	MC
48	0.32	0.28	[no flag]	2	MC
49	0.39	0.42	[no flag]	1	MC
50	0.26	-0.05	D P R	1	InlineChoices
51	0.15	0.25	A D P	1	MC
52	0.46	0.35	[no flag]	2	MC

Table 7.A.5 Item Difficulty and Item-Total Correlation by Item on the Regular Form for Grade Four

Item Sequence	p -value	r	Flag	Maximum Score Points	Item Type
1	0.46	0.41	[no flag]	1	MC
2	0.68	0.63	[no flag]	1	MC
3	0.75	0.44	[no flag]	1	InlineChoices
4	0.55	0.24	D P	2	Match
5	0.42	0.45	[no flag]	1	MC
6	0.22	0.28	D P	1	MC
7	0.45	0.40	[no flag]	1	MC
8	0.42	0.43	[no flag]	1	MC
9	0.55	0.37	D P	2	InlineChoices
10	0.60	0.52	[no flag]	1	MC
11	0.55	0.30	[no flag]	1	MC
12	0.48	0.35	P	2	MC
13	0.76	0.65	[no flag]	1	InlineChoices
14	0.40	0.51	[no flag]	1	MC
15	0.51	0.37	P	2	MC
16	0.38	0.25	P	1	MC
17	0.40	0.38	[no flag]	1	Match
18	0.61	0.31	P	2	MC
19	0.30	0.34	P	1	InlineChoices
20	0.55	0.30	P	2	MC
21	0.45	0.33	[no flag]	1	MC
22	0.33	0.36	[no flag]	1	MC
23	0.16	0.05	A D P R	1	InlineChoices
24	0.61	0.18	P R	2	MC
25	0.66	0.58	[no flag]	1	MC
26	0.58	0.53	[no flag]	1	MC
27	0.39	0.37	[no flag]	1	MC

Table 7.A.5 (continuation)

Item Sequence	p-value	r	Flag	Maximum Score Points	Item Type
28	0.80	0.60	[no flag]	1	MC
29	0.41	0.36	[no flag]	1	MC
30	0.48	0.46	[no flag]	1	MC
31	0.55	0.67	[no flag]	1	Match
32	0.26	0.59	P	1	MC
33	0.37	0.43	[no flag]	1	MC
34	0.68	0.63	[no flag]	1	MC
35	0.56	0.49	[no flag]	1	MC
36	0.42	0.39	[no flag]	1	MC
37	0.57	0.50	[no flag]	1	MC
38	0.53	0.59	[no flag]	1	MC
39	0.34	0.41	[no flag]	1	Zones
40	0.78	0.50	[no flag]	2	Match
41	0.67	0.55	[no flag]	1	MC
42	0.78	0.55	L	2	Zones
43	0.46	0.60	[no flag]	1	MC
44	0.37	0.63	[no flag]	2	Composite
45	0.26	0.20	P	1	MC
46	0.18	0.42	A	1	MC
47	0.36	0.63	[no flag]	1	MC
48	0.49	0.66	[no flag]	1	MC
49	0.58	0.26	P	2	MC
50	0.38	0.47	[no flag]	1	InlineChoices
51	0.61	0.54	P	2	Match
52	0.41	0.38	[no flag]	1	MC

Table 7.A.6 Item Difficulty and Item-Total Correlation by Item on the Accommodated Form for Grade Four

Item Sequence	p -value	r	Flag	Maximum Score Points	Item Type
1	0.61	0.43	[no flag]	1	InlineChoices
2	0.49	0.26	P	2	MC
3	0.75	0.44	[no flag]	1	InlineChoices
4	0.42	0.45	[no flag]	1	MC
5	0.22	0.28	D P	1	MC
6	0.72	0.54	[no flag]	2	MC
7	0.45	0.40	[no flag]	1	MC
8	0.42	0.43	[no flag]	1	MC
9	0.60	0.52	[no flag]	1	MC
10	0.55	0.30	[no flag]	1	MC
11	0.40	0.51	[no flag]	1	MC
12	0.37	0.37	[no flag]	1	MC
13	0.52	0.39	[no flag]	1	InlineChoices
14	0.21	0.28	P	1	Grid
15	0.38	0.25	P	1	MC
16	0.61	0.31	P	2	MC
17	0.45	0.18	D P R	2	MC
18	0.55	0.30	P	2	MC
19	0.23	0.46	[no flag]	1	MC
20	0.17	-0.02	A D P R	1	MC
21	0.43	0.03	D P R	1	InlineChoices
22	0.16	0.05	A D P R	1	InlineChoices
23	0.66	0.58	[no flag]	1	MC
24	0.58	0.53	[no flag]	1	MC
25	0.39	0.37	[no flag]	1	MC
26	0.41	0.36	[no flag]	1	MC
27	0.48	0.46	[no flag]	1	MC

Table 7.A.6 (continuation)

Item Sequence	p-value	r	Flag	Maximum Score Points	Item Type
28	0.28	0.27	[no flag]	1	MC
29	0.41	0.35	P	1	MC
30	0.39	0.53	[no flag]	1	MC
31	0.26	0.59	P	1	MC
32	0.48	0.62	[no flag]	1	MC
33	0.57	0.50	[no flag]	1	MC
34	0.68	0.63	[no flag]	1	MC
35	0.42	0.39	[no flag]	1	MC
36	0.25	0.04	D P R	1	MC
37	0.53	0.59	[no flag]	1	MC
38	0.64	0.65	[no flag]	1	InlineChoices
39	0.66	0.73	[no flag]	1	MC
40	0.46	0.60	[no flag]	1	MC
41	0.70	0.53	P	2	MC
42	0.34	0.47	[no flag]	2	Composite
43	0.37	0.50	[no flag]	1	MC
44	0.26	0.38	[no flag]	1	MC
45	0.40	0.32	P	2	MC
46	0.28	0.20	P R	1	MC
47	0.36	0.63	[no flag]	1	MC
48	0.49	0.66	[no flag]	1	MC
49	0.58	0.26	P	2	MC
50	0.38	0.47	[no flag]	1	InlineChoices
51	0.41	0.38	[no flag]	1	MC
52	0.44	0.45	[no flag]	1	MC

Table 7.A.7 Item Difficulty and Item-Total Correlation by Item on the Regular Form for Grade Five

Item Sequence	p -value	r	Flag	Maximum Score Points	Item Type
1	0.48	0.33	D P	2	InlineChoices
2	0.68	0.56	[no flag]	1	MC
3	0.85	0.28	[no flag]	1	Zones
4	0.71	0.58	[no flag]	1	MC
5	0.53	0.41	[no flag]	1	MC
6	0.65	0.51	[no flag]	2	MC
7	0.36	0.10	D P R	2	MC
8	0.29	0.03	P R	1	Match
9	0.53	0.36	D P	2	MC
10	0.59	0.52	[no flag]	1	InlineChoices
11	0.45	0.48	[no flag]	1	MC
12	0.21	0.32	P	1	MC
13	0.35	0.36	[no flag]	1	InlineChoices
14	0.39	0.34	[no flag]	1	MC
15	0.21	0.31	D P	1	MC
16	0.62	0.13	R	1	InlineChoices
17	0.50	0.37	P	2	MC
18	0.24	0.11	P R	1	MC
19	0.44	0.42	P	2	InlineChoices
20	0.40	0.23	P	1	MC
21	0.45	0.60	[no flag]	1	InlineChoices
22	0.40	0.37	[no flag]	1	MC
23	0.33	0.17	D P R	2	InlineChoices
24	0.46	0.51	[no flag]	1	MC
25	0.32	0.39	[no flag]	1	InlineChoices
26	0.42	0.51	[no flag]	1	MC
27	0.50	0.54	[no flag]	1	MC

Table 7.A.7 (continuation)

Item Sequence	p-value	r	Flag	Maximum Score Points	Item Type
28	0.63	0.66	[no flag]	2	MC
29	0.25	0.29	[no flag]	1	MC
30	0.53	0.41	[no flag]	1	MC
31	0.50	0.58	[no flag]	1	MC
32	0.55	0.35	[no flag]	1	MC
33	0.38	0.56	P	2	MC
34	0.37	0.34	P	1	MC
35	0.51	0.47	[no flag]	1	MC
36	0.50	0.59	[no flag]	1	MC
37	0.30	0.33	[no flag]	1	MC
38	0.44	0.48	P	2	InlineChoices
39	0.64	0.51	[no flag]	1	MC
40	0.31	0.59	P	1	Match
41	0.69	0.70	[no flag]	1	MC
42	0.64	0.67	[no flag]	1	MC
43	0.36	0.32	[no flag]	1	MC
44	0.35	0.36	[no flag]	1	MC
45	0.39	0.35	[no flag]	1	MC
46	0.12	0.11	A D P R	1	MC
47	0.40	0.46	P	1	MC
48	0.52	0.43	[no flag]	1	Match
49	0.52	0.52	[no flag]	1	InlineChoices
50	0.30	0.45	[no flag]	1	MC
51	0.56	0.41	[no flag]	1	InlineChoices
52	0.69	0.06	R	1	Match

Table 7.A.8 Item Difficulty and Item-Total Correlation by Item on the Accommodated Form for Grade Five

Item Sequence	p -value	r	Flag	Maximum Score Points	Item Type
1	0.59	0.30	[no flag]	1	InlineChoices
2	0.71	0.61	[no flag]	1	InlineChoices
3	0.68	0.56	[no flag]	1	MC
4	0.71	0.58	[no flag]	1	MC
5	0.53	0.41	[no flag]	1	MC
6	0.65	0.51	[no flag]	2	MC
7	0.36	0.10	D P R	2	MC
8	0.48	0.49	[no flag]	1	MC
9	0.53	0.36	D P	2	MC
10	0.40	0.36	P	2	MC
11	0.45	0.48	[no flag]	1	MC
12	0.21	0.32	P	1	MC
13	0.35	0.36	[no flag]	1	InlineChoices
14	0.39	0.34	[no flag]	1	MC
15	0.21	0.31	D P	1	MC
16	0.62	0.13	R	1	InlineChoices
17	0.24	0.11	P R	1	MC
18	0.40	0.23	P	1	MC
19	0.45	0.60	[no flag]	1	InlineChoices
20	0.40	0.37	[no flag]	1	MC
21	0.46	0.51	[no flag]	1	MC
22	0.52	0.25	P	2	MC
23	0.42	0.41	[no flag]	1	MC
24	0.63	0.66	[no flag]	2	MC
25	0.28	0.23	P	1	MC
26	0.43	-0.12	D P R	2	MC
27	0.25	0.29	[no flag]	1	MC

Table 7.A.8 (continuation)

Item Sequence	p-value	r	Flag	Maximum Score Points	Item Type
28	0.53	0.41	[no flag]	1	MC
29	0.50	0.58	[no flag]	1	MC
30	0.37	0.34	P	1	MC
31	0.51	0.47	[no flag]	1	MC
32	0.30	0.33	[no flag]	1	MC
33	0.47	0.34	P	2	MC
34	0.55	0.35	[no flag]	1	MC
35	0.54	0.37	[no flag]	1	InlineChoices
36	0.48	0.33	D P	2	InlineChoices
37	0.64	0.51	[no flag]	1	MC
38	0.59	0.38	P	2	MC
39	0.64	0.67	[no flag]	1	MC
40	0.69	0.70	[no flag]	1	MC
41	0.36	0.32	[no flag]	1	MC
42	0.12	0.02	A D P R	1	MC
43	0.48	0.33	[no flag]	1	MC
44	0.21	0.58	[no flag]	1	MC
45	0.40	0.46	P	1	MC
46	0.12	0.11	A D P R	1	MC
47	0.36	0.37	P	1	MC
48	0.52	0.23	P	2	MC
49	0.52	0.52	[no flag]	1	InlineChoices
50	0.30	0.45	[no flag]	1	MC
51	0.22	0.14	D P R	1	MC
52	0.16	0.10	A D P R	1	MC

Table 7.A.9 Item Difficulty and Item-Total Correlation by Item on the Regular Form for Grade Six

Item Sequence	p -value	r	Flag	Maximum Score Points	Item Type
1	0.43	0.25	[no flag]	1	MC
2	0.15	0.25	A D P	1	Grid
3	0.52	0.51	[no flag]	2	Composite
4	0.74	0.55	[no flag]	1	MC
5	0.86	0.47	[no flag]	1	Zones
6	0.84	0.44	[no flag]	1	MC
7	0.79	0.37	L	2	MC
8	0.73	0.66	[no flag]	1	MC
9	0.46	0.12	D P R	2	MC
10	0.39	0.31	D P	2	InlineChoices
11	0.50	0.42	[no flag]	1	MC
12	0.44	0.32	[no flag]	1	MC
13	0.63	0.47	[no flag]	1	MC
14	0.42	0.10	P R	1	MC
15	0.46	0.41	[no flag]	2	Composite
16	0.52	0.44	[no flag]	1	MC
17	0.67	0.48	P	2	MC
18	0.52	0.33	[no flag]	1	MC
19	0.45	0.57	[no flag]	1	MC
20	0.79	0.42	[no flag]	1	InlineChoices
21	0.33	0.08	D P R	1	Match
22	0.41	0.28	P	1	MC
23	0.60	0.16	P R	1	InlineChoices
24	0.17	0.18	A D P R	1	MC
25	0.51	0.33	[no flag]	1	MC
26	0.21	0.46	P	1	InlineChoices
27	0.42	0.49	P	2	Match

Table 7.A.9 (continuation)

Item Sequence	p-value	r	Flag	Maximum Score Points	Item Type
28	0.29	0.07	D P R	1	MC
29	0.47	0.26	[no flag]	1	MC
30	0.77	0.38	[no flag]	2	InlineChoices
31	0.72	0.62	[no flag]	1	MC
32	0.49	0.47	[no flag]	1	MC
33	0.44	0.45	[no flag]	1	MC
34	0.47	0.43	[no flag]	1	MC
35	0.26	0.24	D P	1	MC
36	0.34	0.30	[no flag]	1	MC
37	0.27	0.20	P	1	MC
38	0.69	0.59	[no flag]	1	MC
39	0.59	0.38	P	2	InlineChoices
40	0.68	0.60	P	2	MC
41	0.28	0.51	[no flag]	1	MC
42	0.57	0.52	[no flag]	1	MC
43	0.52	0.46	[no flag]	1	MC
44	0.41	0.40	[no flag]	1	Match
45	0.67	0.47	[no flag]	2	MC
46	0.61	0.53	P	2	MC
47	0.15	0.44	A D P	1	MC
48	0.65	0.63	[no flag]	1	MC
49	0.50	0.37	P	2	MC
50	0.31	0.55	[no flag]	1	MC
51	0.55	0.46	[no flag]	1	MC
52	0.51	0.45	[no flag]	1	MC

Table 7.A.10 Item Difficulty and Item-Total Correlation by Item on the Accommodated Form for Grade Six

Item Sequence	p -value	r	Flag	Maximum Score Points	Item Type
1	0.58	0.49	[no flag]	1	MC
2	0.47	0.34	[no flag]	1	MC
3	0.52	0.51	[no flag]	2	Composite
4	0.74	0.55	[no flag]	1	MC
5	0.36	0.20	D P R	1	MC
6	0.28	0.06	D P R	1	MC
7	0.35	0.59	[no flag]	1	MC
8	0.79	0.37	L	2	MC
9	0.36	0.34	[no flag]	1	MC
10	0.46	0.12	D P R	2	MC
11	0.44	0.44	[no flag]	1	MC
12	0.49	0.27	[no flag]	2	MC
13	0.19	0.38	A P	1	MC
14	0.42	0.10	P R	1	MC
15	0.52	0.33	[no flag]	1	MC
16	0.21	-0.10	D P R	1	MC
17	0.45	0.57	[no flag]	1	MC
18	0.41	0.28	P	1	MC
19	0.17	0.18	A D P R	1	MC
20	0.41	0.40	P	1	MC
21	0.64	0.44	[no flag]	2	MC
22	0.55	0.38	[no flag]	1	MC
23	0.47	0.26	[no flag]	1	MC
24	0.29	0.07	D P R	1	MC
25	0.49	0.47	[no flag]	1	MC
26	0.44	0.45	[no flag]	1	MC
27	0.77	0.38	[no flag]	2	InlineChoices

Table 7.A.10 (continuation)

Item Sequence	p-value	r	Flag	Maximum Score Points	Item Type
28	0.72	0.62	[no flag]	1	MC
29	0.78	0.67	[no flag]	2	InlineChoices
30	0.26	0.24	D P	1	MC
31	0.34	0.30	[no flag]	1	MC
32	0.27	0.20	P	1	MC
33	0.69	0.59	[no flag]	1	MC
34	0.68	0.60	P	2	MC
35	0.28	0.51	[no flag]	1	MC
36	0.57	0.52	[no flag]	1	MC
37	0.04	0.02	A R D	1	MC
38	0.62	0.46	[no flag]	2	MC
39	0.50	0.34	[no flag]	1	MC
40	0.65	0.63	[no flag]	1	MC
41	0.50	0.37	P	2	MC
42	0.68	0.32	P	2	MC
43	0.67	0.47	[no flag]	2	MC
44	0.42	0.42	[no flag]	1	MC
45	0.56	0.48	[no flag]	1	InlineChoices
46	0.20	0.21	D	1	MC
47	0.52	0.46	[no flag]	1	MC
48	0.40	0.49	[no flag]	1	MC
49	0.55	0.46	[no flag]	1	MC
50	0.31	0.55	[no flag]	1	MC
51	0.24	-0.15	D P R	1	MC
52	0.21	0.11	D P R	1	MC

Table 7.A.11 Item Difficulty and Item-Total Correlation by Item on the Regular Form for Grade Seven

Item Sequence	p -value	r	Flag	Maximum Score Points	Item Type
1	0.39	0.20	P	1	MC
2	0.37	0.35	P	2	InlineChoices
3	0.78	0.56	[no flag]	2	MC
4	0.74	0.62	[no flag]	1	MC
5	0.54	0.44	[no flag]	1	MC
6	0.39	0.23	[no flag]	1	MC
7	0.63	0.42	[no flag]	1	MC
8	0.41	0.21	[no flag]	1	MC
9	0.50	0.59	[no flag]	1	Grid
10	0.39	0.22	P	1	MC
11	0.49	0.38	P	2	MC
12	0.40	0.43	[no flag]	1	MC
13	0.29	0.30	P	1	MC
14	0.34	0.34	P	1	MC
15	0.60	0.45	P	2	MC
16	0.52	0.37	P	2	MC
17	0.34	0.25	P	1	MC
18	0.54	0.64	[no flag]	1	MC
19	0.40	0.02	P R	1	MC
20	0.26	0.08	D P R	1	MC
21	0.54	0.52	[no flag]	1	MC
22	0.39	0.49	[no flag]	1	MC
23	0.53	0.41	[no flag]	1	MC
24	0.47	0.48	[no flag]	1	MC
25	0.22	-0.01	D P R	1	MC
26	0.58	0.54	[no flag]	1	MC
27	0.62	0.45	P	2	MC

Table 7.A.11 (continuation)

Item Sequence	p-value	r	Flag	Maximum Score Points	Item Type
28	0.67	0.52	P	2	MC
29	0.41	0.54	[no flag]	1	MC
30	0.36	0.13	P R	1	MC
31	0.46	0.35	P	2	MC
32	0.49	0.36	P	2	MC
33	0.54	0.47	[no flag]	1	MC
34	0.32	0.23	[no flag]	1	InlineChoices
35	0.38	0.28	D P	2	InlineChoices
36	0.90	0.57	[no flag]	1	Match
37	0.42	0.55	[no flag]	1	MC
38	0.43	0.25	P	1	MC
39	0.40	0.35	[no flag]	1	MC
40	0.44	0.43	[no flag]	1	MC
41	0.64	0.39	P	2	MC
42	0.23	0.57	[no flag]	1	MC
43	0.44	0.48	[no flag]	1	MC
44	0.35	0.24	P	2	MC
45	0.40	0.39	[no flag]	1	MC
46	0.55	0.22	[no flag]	1	InlineChoices
47	0.34	0.23	D P	1	MC
48	0.04	0.36	A D P	1	Grid
49	0.27	0.53	P	1	MC
50	0.40	0.61	[no flag]	1	MC
51	0.46	0.17	D P R	2	InlineChoices
52	0.48	0.55	[no flag]	1	Match

Table 7.A.12 Item Difficulty and Item-Total Correlation by Item on the Accommodated Form for Grade Seven

Item Sequence	p -value	r	Flag	Maximum Score Points	Item Type
1	0.81	0.59	[no flag]	1	MC
2	0.78	0.56	[no flag]	2	MC
3	0.59	0.30	[no flag]	2	MC
4	0.74	0.62	[no flag]	1	MC
5	0.54	0.44	[no flag]	1	MC
6	0.39	0.23	[no flag]	1	MC
7	0.68	0.47	[no flag]	2	InlineChoices
8	0.39	0.20	P	1	MC
9	0.63	0.25	[no flag]	1	MC
10	0.38	0.35	O	2	MC
11	0.23	0.18	O R	1	MC
12	0.27	0.25	O	1	MC
13	0.34	0.34	P	1	MC
14	0.40	0.43	[no flag]	1	MC
15	0.29	0.30	P	1	MC
16	0.39	0.22	P	1	MC
17	0.52	0.37	P	2	MC
18	0.23	0.07	O P R	1	MC
19	0.34	0.25	P	1	MC
20	0.26	0.08	D P R	1	MC
21	0.54	0.52	[no flag]	1	MC
22	0.39	0.49	[no flag]	1	MC
23	0.53	0.41	[no flag]	1	MC
24	0.62	0.41	[no flag]	1	MC
25	0.22	-0.01	D P R	1	MC
26	0.62	0.45	P	2	MC
27	0.67	0.52	P	2	MC

Table 7.A.12 (continuation)

Item Sequence	p-value	r	Flag	Maximum Score Points	Item Type
28	0.12	0.39	A	1	Grid
29	0.43	0.29	[no flag]	1	MC
30	0.23	0.04	D P R	1	MC
31	0.36	0.13	P R	1	MC
32	0.33	0.08	P R	1	MC
33	0.56	0.39	[no flag]	2	MC
34	0.49	0.36	P	2	MC
35	0.54	0.47	[no flag]	1	MC
36	0.32	0.23	[no flag]	1	InlineChoices
37	0.14	0.27	A D P	1	MC
38	0.43	0.25	P	1	MC
39	0.40	0.35	[no flag]	1	MC
40	0.44	0.43	[no flag]	1	MC
41	0.46	0.15	R	1	MC
42	0.29	0.38	P	1	MC
43	0.44	0.48	[no flag]	1	MC
44	0.35	0.24	P	2	MC
45	0.55	0.22	[no flag]	1	InlineChoices
46	0.40	0.39	[no flag]	1	MC
47	0.50	0.19	R	2	MC
48	0.34	0.23	D P	1	MC
49	0.04	0.36	A D P	1	Grid
50	0.27	0.53	P	1	MC
51	0.40	0.61	[no flag]	1	MC
52	0.30	0.31	[no flag]	1	MC

Table 7.A.13 Item Difficulty and Item-Total Correlation by Item on the Regular Form for Grade Eight

Item Sequence	p -value	r	Flag	Maximum Score Points	Item Type
1	0.80	0.41	[no flag]	1	MC
2	0.67	0.53	[no flag]	2	MC
3	0.52	0.42	[no flag]	1	MC
4	0.80	0.62	[no flag]	1	MC
5	0.56	0.01	D P R	2	InlineChoices
6	0.66	0.26	P	2	MC
7	0.52	0.51	[no flag]	1	MC
8	0.41	0.35	P	1	MC
9	0.66	0.34	[no flag]	2	InlineChoices
10	0.40	0.36	[no flag]	1	MC
11	0.63	0.49	[no flag]	1	MC
12	0.36	0.15	P R	1	MC
13	0.51	0.34	[no flag]	1	MC
14	0.56	0.49	[no flag]	1	MC
15	0.30	0.08	D P R	1	InlineChoices
16	0.21	0.43	[no flag]	1	MC
17	0.54	0.47	[no flag]	1	MC
18	0.39	0.40	[no flag]	1	MC
19	0.55	0.33	P	2	MC
20	0.45	0.27	P	2	InlineChoices
21	0.56	0.25	P	2	InlineChoices
22	0.32	0.38	[no flag]	1	MC
23	0.86	0.45	L	2	MC
24	0.59	0.43	[no flag]	1	MC
25	0.46	0.25	[no flag]	1	MC
26	0.27	0.16	D P R	1	MC
27	0.35	0.16	D P R	2	MC

Table 7.A.13 (continuation)

Item Sequence	p-value	r	Flag	Maximum Score Points	Item Type
28	0.49	0.41	[no flag]	2	Composite
29	0.32	0.49	P	1	Grid
30	0.65	0.51	[no flag]	1	InlineChoices
31	0.55	0.39	P	2	MC
32	0.37	0.61	[no flag]	1	MC
33	0.22	0.38	[no flag]	1	MC
34	0.49	0.40	[no flag]	1	MC
35	0.48	0.40	[no flag]	1	MC
36	0.34	0.31	[no flag]	1	MC
37	0.48	0.55	[no flag]	1	MC
38	0.39	0.45	P	1	Match
39	0.32	0.16	R D	2	Composite
40	0.41	0.21	[no flag]	1	MC
41	0.68	0.68	[no flag]	1	Match
42	0.27	0.35	P	1	MC
43	0.58	0.48	P	2	MC
44	0.44	0.64	[no flag]	1	MC
45	0.18	0.48	A P	1	Match
46	0.47	0.55	[no flag]	1	MC
47	0.64	0.39	P	2	MC
48	0.51	0.43	[no flag]	1	MC
49	0.52	0.61	[no flag]	1	MC
50	0.38	0.50	P	1	MC
51	0.62	0.57	[no flag]	1	InlineChoices
52	0.56	0.51	[no flag]	1	MC

Table 7.A.14 Item Difficulty and Item-Total Correlation by Item on the Accommodated Form for Grade Eight

Item Sequence	p -value	r	Flag	Maximum Score Points	Item Type
1	0.80	0.41	[no flag]	1	MC
2	0.67	0.53	[no flag]	2	MC
3	0.52	0.42	[no flag]	1	MC
4	0.80	0.62	[no flag]	1	MC
5	0.66	0.26	P	2	MC
6	0.48	0.29	[no flag]	1	MC
7	0.34	0.50	[no flag]	1	MC
8	0.52	0.51	[no flag]	1	MC
9	0.41	0.35	P	1	MC
10	0.40	0.36	[no flag]	1	MC
11	0.63	0.49	[no flag]	1	MC
12	0.36	0.15	P R	1	MC
13	0.51	0.34	[no flag]	1	MC
14	0.56	0.49	[no flag]	1	MC
15	0.34	0.11	R	1	MC
16	0.30	0.08	D P R	1	InlineChoices
17	0.21	0.43	[no flag]	1	MC
18	0.27	0.38	[no flag]	1	MC
19	0.19	0.18	A D O R	1	MC
20	0.22	0.15	D O R	1	MC
21	0.45	0.27	P	2	InlineChoices
22	0.21	-0.24	R D	1	Grid
23	0.86	0.45	L	2	MC
24	0.32	0.38	[no flag]	1	MC
25	0.59	0.43	[no flag]	1	MC
26	0.27	0.16	D P R	1	MC
27	0.15	0.07	A R D	1	MC

Table 7.A.14 (continuation)

Item Sequence	p-value	r	Flag	Maximum Score Points	Item Type
28	0.32	0.01	L R D	2	MC
29	0.21	0.50	[no flag]	1	MC
30	0.34	0.42	[no flag]	1	MC
31	0.37	0.61	[no flag]	1	MC
32	0.26	0.24	D	1	MC
33	0.22	0.38	[no flag]	1	MC
34	0.38	0.39	[no flag]	1	MC
35	0.48	0.40	[no flag]	1	MC
36	0.49	0.40	[no flag]	1	MC
37	0.34	0.31	[no flag]	1	MC
38	0.26	0.11	R	1	MC
39	0.41	0.21	[no flag]	1	MC
40	0.27	0.35	P	1	MC
41	0.22	0.19	R	1	MC
42	0.44	0.64	[no flag]	1	MC
43	0.26	0.33	[no flag]	1	MC
44	0.24	0.34	[no flag]	1	MC
45	0.22	0.40	[no flag]	1	MC
46	0.47	0.55	[no flag]	1	MC
47	0.64	0.39	P	2	MC
48	0.52	0.61	[no flag]	1	MC
49	0.38	0.50	P	1	MC
50	0.16	0.27	A D	1	MC
51	0.56	0.51	[no flag]	1	MC
52	0.29	0.00	R D	1	MC

Table 7.A.15 Item Difficulty and Item-Total Correlation by Item on the Regular Form for High School

Item Sequence	p -value	r	Flag	Maximum Score Points	Item Type
1	0.33	0.26	[no flag]	1	MC
2	0.45	0.36	[no flag]	1	MC
3	0.68	0.32	P	2	MC
4	0.60	0.50	[no flag]	1	MC
5	0.47	0.27	[no flag]	1	MC
6	0.51	0.37	[no flag]	1	Zones
7	0.63	0.38	P	2	MC
8	0.41	0.35	[no flag]	1	MC
9	0.47	0.32	[no flag]	1	MC
10	0.57	0.30	P	2	MC
11	0.37	0.33	[no flag]	1	MC
12	0.62	0.50	[no flag]	2	MC
13	0.39	0.46	[no flag]	1	MC
14	0.29	0.28	P	1	MC
15	0.41	0.16	P R	1	MC
16	0.48	0.27	[no flag]	1	Zones
17	0.35	0.28	D P	2	InlineChoices
18	0.27	0.17	D P R	1	MC
19	0.55	0.37	P	2	MC
20	0.51	0.40	P	2	InlineChoices
21	0.48	0.48	[no flag]	1	MC
22	0.46	0.57	[no flag]	1	MC
23	0.50	0.53	[no flag]	1	MC
24	0.28	0.23	D P	1	MC
25	0.64	0.53	[no flag]	1	MC
26	0.57	0.22	P	1	MC
27	0.30	0.14	P R	1	InlineChoices

Table 7.A.15 (continuation)

Item Sequence	p-value	r	Flag	Maximum Score Points	Item Type
28	0.46	0.34	P	1	MC
29	0.56	0.38	[no flag]	1	MC
30	0.57	0.45	[no flag]	1	MC
31	0.56	0.44	[no flag]	1	MC
32	0.59	0.50	P	2	MC
33	0.23	0.36	D	1	Match
34	0.23	0.53	P	1	MC
35	0.31	0.23	P	1	MC
36	0.65	0.62	[no flag]	1	MC
37	0.44	0.37	P	1	MC
38	0.22	-0.11	D P R	1	MC
39	0.57	0.45	P	2	MC
40	0.49	0.44	[no flag]	1	MC
41	0.53	0.42	[no flag]	1	MC
42	0.49	0.49	[no flag]	1	MC
43	0.64	0.48	[no flag]	1	InlineChoices
44	0.40	0.63	[no flag]	1	MC
45	0.55	0.25	P	2	InlineChoices
46	0.33	0.30	P	1	MC
47	0.29	0.39	[no flag]	1	MC
48	0.32	0.41	[no flag]	1	MC
49	0.70	0.58	[no flag]	2	MC
50	0.44	0.50	[no flag]	1	MC
51	0.30	0.36	[no flag]	1	MC
52	0.46	0.31	P	2	MC

Table 7.A.16 Item Difficulty and Item-Total Correlation by Item on the Accommodated Form for High School

Item Sequence	p -value	r	Flag	Maximum Score Points	Item Type
1	0.33	0.26	[no flag]	1	MC
2	0.68	0.32	P	2	MC
3	0.60	0.50	[no flag]	1	MC
4	0.47	0.27	[no flag]	1	MC
5	0.45	0.36	[no flag]	1	MC
6	0.63	0.38	P	2	MC
7	0.55	0.37	P	2	MC
8	0.53	0.69	[no flag]	1	MC
9	0.13	0.68	A D	1	MC
10	0.46	0.57	[no flag]	1	MC
11	0.50	0.53	[no flag]	1	MC
12	0.64	0.53	[no flag]	1	MC
13	0.57	0.22	P	1	MC
14	0.53	-0.08	R	1	MC
15	0.40	-0.02	R	1	MC
16	0.40	0.14	O R D	2	MC
17	0.20	1.00	O	1	MC
18	0.40	0.86	O	1	MC
19	0.33	0.62	O	1	MC
20	0.27	0.81	O	1	MC
21	0.47	-0.02	O R	1	MC
22	0.27	0.58	O	1	MC
23	0.20	-0.70	D O R	1	MC
24	0.46	0.34	P	1	MC
25	0.56	0.38	[no flag]	1	MC
26	0.57	0.45	[no flag]	1	MC
27	0.56	0.44	[no flag]	1	MC

Table 7.A.16 (continuation)

Item Sequence	p-value	r	Flag	Maximum Score Points	Item Type
28	0.59	0.50	P	2	MC
29	0.47	-0.02	R	1	MC
30	0.40	0.52	[no flag]	1	MC
31	0.31	0.23	P	1	MC
32	0.40	0.91	[no flag]	1	MC
33	0.65	0.62	[no flag]	1	MC
34	0.44	0.37	P	1	MC
35	0.22	-0.11	D P R	1	MC
36	0.40	0.14	R	1	MC
37	0.57	0.45	P	2	MC
38	0.53	0.42	[no flag]	1	MC
39	0.49	0.49	[no flag]	1	MC
40	0.27	-0.29	R D	1	MC
41	0.55	0.25	P	2	InlineChoices
42	0.32	0.41	[no flag]	1	MC
43	0.44	0.50	[no flag]	1	MC
44	0.20	0.33	D	1	InlineChoices
45	0.20	-0.92	R D	1	MC
46	0.46	0.31	P	2	MC
47	0.47	0.32	[no flag]	1	MC
48	0.37	0.33	[no flag]	1	MC
49	0.62	0.50	[no flag]	2	MC
50	0.41	0.16	P R	1	MC
51	0.27	0.17	D P R	1	MC
52	0.53	0.47	[no flag]	2	MC

Appendix 7.B: DIF Analyses

Notes:

- Meaning of DIF categories are as follows:
 A = Negligible DIF
 B = Moderate DIF
 C = Large DIF
 “+” = Favors the focal group
 “-” = Favors the reference group
- Small N indicates the DIF analysis was not performed for the item due to insufficient sample size.

Table 7.B.1 Gender DIF Classifications Summary by Grade Level

DIF Category	Grade 3 Number	Grade 3 Percent	Grade 4 Number	Grade 4 Percent	Grade 5 Number	Grade 5 Percent	Grade 6 Number	Grade 6 Percent	Grade 7 Number	Grade 7 Percent	Grade 8 Number	Grade 8 Percent	High School Number	High School Percent
C-	0	0%	0	0%	0	0%	0	0%	0	0%	0	0%	0	0%
B-	0	0%	0	0%	1	1%	1	1%	0	0%	1	1%	1	1%
A-	26	37%	28	37%	23	33%	27	36%	26	37%	21	29%	21	29%
A+	26	37%	24	32%	28	40%	24	32%	26	37%	30	42%	30	42%
B+	0	0%	0	0%	0	0%	0	0%	0	0%	0	0%	0	0%
C+	0	0%	0	0%	0	0%	0	0%	0	0%	0	0%	0	0%
Small N	19	27%	24	32%	18	26%	24	32%	19	27%	20	28%	20	28%
Total	71	100%	76	100%	70	100%	76	100%	71	100%	72	100%	72	100%

Appendix 7.C: IRT Analyses Results

Table 7.C.1 Item Difficulty Parameter Distribution by Claim for Grade Three

IRT- <i>b</i> Range	Reading	Writing Mechanics	Listening	Number of Items
$b < -3.5$	0	0	0	0
$-3.5 \leq b < -3.0$	0	0	0	0
$-3.0 \leq b < -2.5$	0	0	0	0
$-2.5 \leq b < -2.0$	0	1	0	1
$-2.0 \leq b < -1.5$	0	0	2	2
$-1.5 \leq b < -1.0$	0	0	0	0
$-1.0 \leq b < -0.5$	2	1	2	5
$-0.5 \leq b < 0$	10	3	6	19
$0 \leq b < 0.5$	8	6	2	16
$0.5 \leq b < 1.0$	8	7	2	17
$1.0 \leq b < 1.5$	5	5	1	11
$1.5 \leq b < 2.0$	0	0	0	0
$2.0 \leq b < 2.5$	0	0	0	0
$2.5 \leq b < 3.0$	0	0	0	0
$3.0 \leq b < 3.5$	0	0	0	0
$b \geq 3.5$	0	0	0	0
Minimum	-0.69	-2.19	-1.87	-2.19
Maximum	1.49	1.42	1.01	1.49
Mean	0.36	0.44	-0.25	0.25
SD	0.56	0.81	0.79	0.74

Table 7.C.2 Item Difficulty Parameter Distribution by Claim for Grade Four

IRT-<i>b</i> Range	Reading	Writing Mechanics	Listening	Number of Items
$b < -3.5$	0	0	0	0
$-3.5 \leq b < -3.0$	0	0	0	0
$-3.0 \leq b < -2.5$	0	0	0	0
$-2.5 \leq b < -2.0$	0	0	0	0
$-2.0 \leq b < -1.5$	0	1	2	3
$-1.5 \leq b < -1.0$	0	2	3	5
$-1.0 \leq b < -0.5$	3	2	3	8
$-0.5 \leq b < 0$	7	7	3	17
$0 \leq b < 0.5$	11	9	3	23
$0.5 \leq b < 1.0$	8	1	2	11
$1.0 \leq b < 1.5$	3	1	1	5
$1.5 \leq b < 2.0$	2	0	0	2
$2.0 \leq b < 2.5$	0	0	0	0
$2.5 \leq b < 3.0$	0	0	0	0
$3.0 \leq b < 3.5$	0	0	0	0
$b \geq 3.5$	0	0	0	0
Minimum	-0.83	-1.54	-1.82	-1.82
Maximum	1.78	1.09	1.40	1.78
Mean	0.36	-0.12	-0.40	0.03
SD	0.64	0.65	0.93	0.78

Table 7.C.3 Item Difficulty Parameter Distribution by Claim for Grade Five

IRT-<i>b</i> Range	Reading	Writing Mechanics	Listening	Number of Items
$b < -3.5$	0	0	0	0
$-3.5 \leq b < -3.0$	0	0	0	0
$-3.0 \leq b < -2.5$	0	0	0	0
$-2.5 \leq b < -2.0$	0	0	0	0
$-2.0 \leq b < -1.5$	0	0	1	1
$-1.5 \leq b < -1.0$	0	0	2	2
$-1.0 \leq b < -0.5$	2	2	6	10
$-0.5 \leq b < 0$	9	6	1	16
$0 \leq b < 0.5$	9	7	1	17
$0.5 \leq b < 1.0$	9	3	3	15
$1.0 \leq b < 1.5$	4	2	0	6
$1.5 \leq b < 2.0$	1	0	1	2
$2.0 \leq b < 2.5$	1	0	0	1
$2.5 \leq b < 3.0$	0	0	0	0
$3.0 \leq b < 3.5$	0	0	0	0
$b \geq 3.5$	0	0	0	0
Minimum	-0.89	-0.56	-1.83	-1.83
Maximum	2.11	1.42	1.91	2.11
Mean	0.42	0.21	-0.30	0.21
SD	0.66	0.53	0.99	0.76

Table 7.C.4 Item Difficulty Parameter Distribution by Claim for Grade Six

IRT-<i>b</i> Range	Reading	Writing Mechanics	Listening	Number of Items
$b < -3.5$	0	0	0	0
$-3.5 \leq b < -3.0$	0	0	0	0
$-3.0 \leq b < -2.5$	0	0	0	0
$-2.5 \leq b < -2.0$	0	0	0	0
$-2.0 \leq b < -1.5$	0	0	3	3
$-1.5 \leq b < -1.0$	4	1	4	9
$-1.0 \leq b < -0.5$	4	4	0	8
$-0.5 \leq b < 0$	10	5	1	16
$0 \leq b < 0.5$	13	3	5	21
$0.5 \leq b < 1.0$	3	3	1	7
$1.0 \leq b < 1.5$	3	4	1	8
$1.5 \leq b < 2.0$	1	1	1	3
$2.0 \leq b < 2.5$	0	0	0	0
$2.5 \leq b < 3.0$	0	0	0	0
$3.0 \leq b < 3.5$	0	1	0	1
$b \geq 3.5$	0	0	0	0
Minimum	-1.40	-1.42	-1.93	-1.93
Maximum	1.86	3.00	1.88	3.00
Mean	0.05	0.29	-0.34	0.04
SD	0.71	1.03	1.15	0.93

Table 7.C.5 Item Difficulty Parameter Distribution by Claim for Grade Seven

IRT-<i>b</i> Range	Reading	Writing Mechanics	Listening	Number of Items
$b < -3.5$	0	0	0	0
$-3.5 \leq b < -3.0$	0	0	0	0
$-3.0 \leq b < -2.5$	0	0	0	0
$-2.5 \leq b < -2.0$	0	1	0	1
$-2.0 \leq b < -1.5$	0	1	0	1
$-1.5 \leq b < -1.0$	0	0	3	3
$-1.0 \leq b < -0.5$	0	3	5	8
$-0.5 \leq b < 0$	4	4	3	11
$0 \leq b < 0.5$	14	8	2	24
$0.5 \leq b < 1.0$	10	2	1	13
$1.0 \leq b < 1.5$	3	3	1	7
$1.5 \leq b < 2.0$	0	1	1	2
$2.0 \leq b < 2.5$	0	0	0	0
$2.5 \leq b < 3.0$	0	0	0	0
$3.0 \leq b < 3.5$	1	0	0	1
$b \geq 3.5$	0	0	0	0
Minimum	-0.45	-2.35	-1.29	-2.35
Maximum	3.24	1.76	1.86	3.24
Mean	0.53	0.11	-0.24	0.22
SD	0.65	0.92	0.91	0.85

Table 7.C.6 Item Difficulty Parameter Distribution by Claim for Grade Eight

IRT-<i>b</i> Range	Reading	Writing Mechanics	Listening	Number of Items
$b < -3.5$	0	0	0	0
$-3.5 \leq b < -3.0$	0	0	0	0
$-3.0 \leq b < -2.5$	0	0	0	0
$-2.5 \leq b < -2.0$	0	0	0	0
$-2.0 \leq b < -1.5$	0	0	1	1
$-1.5 \leq b < -1.0$	1	1	2	4
$-1.0 \leq b < -0.5$	2	3	1	6
$-0.5 \leq b < 0$	6	3	6	15
$0 \leq b < 0.5$	9	7	2	18
$0.5 \leq b < 1.0$	9	7	1	17
$1.0 \leq b < 1.5$	6	1	1	8
$1.5 \leq b < 2.0$	1	0	1	2
$2.0 \leq b < 2.5$	0	0	0	0
$2.5 \leq b < 3.0$	0	0	0	0
$3.0 \leq b < 3.5$	0	0	0	0
$b \geq 3.5$	0	0	0	0
Minimum	-1.15	-1.47	-1.77	-1.77
Maximum	1.61	1.09	1.50	1.61
Mean	0.41	0.20	-0.20	0.22
SD	0.66	0.66	0.89	0.74

Table 7.C.7 Item Difficulty Parameter Distribution by Claim for High School

IRT-<i>b</i> Range	Reading	Writing Mechanics	Listening	Number of Items
$b < -3.5$	0	0	0	0
$-3.5 \leq b < -3.0$	0	0	0	0
$-3.0 \leq b < -2.5$	0	0	0	0
$-2.5 \leq b < -2.0$	0	0	0	0
$-2.0 \leq b < -1.5$	0	0	0	0
$-1.5 \leq b < -1.0$	0	0	1	1
$-1.0 \leq b < -0.5$	3	3	1	7
$-0.5 \leq b < 0$	10	3	6	19
$0 \leq b < 0.5$	13	5	4	22
$0.5 \leq b < 1.0$	5	6	1	12
$1.0 \leq b < 1.5$	3	3	1	7
$1.5 \leq b < 2.0$	0	3	0	3
$2.0 \leq b < 2.5$	0	0	0	0
$2.5 \leq b < 3.0$	0	0	0	0
$3.0 \leq b < 3.5$	0	0	0	0
$b \geq 3.5$	0	0	0	0
Minimum	-0.83	-0.87	-1.21	-1.21
Maximum	1.38	1.75	1.28	1.75
Mean	0.18	0.52	-0.10	0.24
SD	0.56	0.78	0.60	0.67

Note: For [Table 7.C.8](#) through [Table 7.C.21](#), “N/A” in the *d*-parameters and *d*-parameters SE columns indicates that the item is a 1-point item with no *d*-parameters. The semicolon (;) is used to separate the two *d*-Parameters.

Table 7.C.8 IRT Item Difficulty on the Regular Form for Grade Three

Item Sequence	<i>b</i> -parameter	<i>b</i> -parameter SE	<i>d</i> -parameters	<i>d</i> -parameters SE
1	-2.1884	0.0360	N/A	N/A
2	-0.3244	0.0249	N/A	N/A
3	-0.4689	0.0251	N/A	N/A
4	-0.3514	0.0214	1.2111; -1.2111	0.0223; 0.0223
5	-0.5508	0.0191	0.2741; -0.2741	0.0235; 0.0235
6	-0.3011	0.0259	N/A	N/A
7	0.6633	0.0256	N/A	N/A
8	0.6976	0.0257	N/A	N/A
9	0.2607	0.0252	N/A	N/A
10	-0.6948	0.0210	0.8575; -0.8575	0.0236; 0.0236
11	0.3903	0.0250	N/A	N/A
12	-0.0832	0.0245	N/A	N/A
13	0.4518	0.0254	N/A	N/A
14	-0.0608	0.0246	N/A	N/A
15	0.5695	0.0253	N/A	N/A
16	1.2683	0.0281	N/A	N/A
17	0.9436	0.0267	N/A	N/A
18	0.6677	0.0252	N/A	N/A
19	0.3934	0.0210	1.1197; -1.1197	0.0233; 0.0233
20	1.3372	0.0285	N/A	N/A
21	1.2389	0.0280	N/A	N/A
22	0.4883	0.0256	N/A	N/A
23	-0.1275	0.0248	N/A	N/A
24	0.5615	0.0271	N/A	N/A
25	0.8244	0.0259	N/A	N/A
26	-0.7135	0.0203	0.5959; -0.5959	0.0239; 0.0239
27	0.7862	0.0258	N/A	N/A
28	-0.7042	0.0203	0.5018; -0.5018	0.0243; 0.0243
29	-1.5776	0.0294	0.6664; -0.6664	0.0332; 0.0332
30	-0.3699	0.0257	N/A	N/A
31	-1.8727	0.0363	0.8335; -0.8335	0.0400; 0.0400
32	1.0057	0.0267	N/A	N/A

Table 7.C.8 (continuation)

Item					
Sequence	b-parameter	b-parameter SE	d-parameters	d-parameters SE	
33	-0.0116	0.0265	N/A	N/A	N/A
34	0.1978	0.0216	1.3691; -1.3691	0.0221; 0.0221	
35	0.8491	0.0273	N/A	N/A	N/A
36	-0.5348	0.0281	N/A	N/A	N/A
37	-0.0059	0.0259	N/A	N/A	N/A
38	0.7498	0.0202	0.4910; -0.4910	0.0245; 0.0245	
39	-0.1053	0.0247	N/A	N/A	N/A
40	-0.2128	0.0252	N/A	N/A	N/A
41	0.7088	0.0261	N/A	N/A	N/A
42	0.7951	0.0266	N/A	N/A	N/A
43	1.4244	0.0291	N/A	N/A	N/A
44	0.4019	0.0248	N/A	N/A	N/A
45	0.9532	0.0207	-0.3067; 0.3067	0.0304; 0.0304	
46	-0.4687	0.0255	N/A	N/A	N/A
47	-0.0408	0.0250	N/A	N/A	N/A
48	1.0491	0.0272	N/A	N/A	N/A
49	1.1476	0.0280	N/A	N/A	N/A
50	0.4807	0.0251	N/A	N/A	N/A
51	0.5200	0.0260	N/A	N/A	N/A
52	1.2145	0.0287	N/A	N/A	N/A

Table 7.C.9 IRT Item Difficulty on the Accommodated Form for Grade Three

Item Sequence	<i>b</i> -parameter	<i>b</i> -parameter SE	<i>d</i> -parameters	<i>d</i> -parameters SE
1	0.0578	0.1235	N/A	N/A
2	-0.3244	0.0249	N/A	N/A
3	-0.3514	0.0214	1.2111; -1.2111	0.0223; 0.0223
4	0.1053	0.1246	N/A	N/A
5	-0.5508	0.0191	0.2741; -0.2741	0.0235; 0.0235
6	-0.3011	0.0259	N/A	N/A
7	0.6633	0.0256	N/A	N/A
8	-0.1135	0.1231	N/A	N/A
9	0.6976	0.0257	N/A	N/A
10	0.4639	0.1237	N/A	N/A
11	-0.0420	0.0985	1.2990; -1.2990	0.1160; 0.1160
12	0.3903	0.0250	N/A	N/A
13	-0.0832	0.0245	N/A	N/A
14	-0.0608	0.0246	N/A	N/A
15	0.4518	0.0254	N/A	N/A
16	1.2683	0.0281	N/A	N/A
17	0.5695	0.0253	N/A	N/A
18	0.6677	0.0252	N/A	N/A
19	0.9436	0.0267	N/A	N/A
20	1.3372	0.0285	N/A	N/A
21	1.2389	0.0280	N/A	N/A
22	-0.1275	0.0248	N/A	N/A
23	0.5615	0.0271	N/A	N/A
24	0.8244	0.0259	N/A	N/A
25	0.7655	0.1299	N/A	N/A
26	1.3113	0.1521	N/A	N/A
27	0.7862	0.0258	N/A	N/A
28	-1.5776	0.0294	0.6664; -0.6664	0.0332; 0.0332
29	-0.3699	0.0257	N/A	N/A
30	0.2965	0.1245	N/A	N/A
31	1.0057	0.0267	N/A	N/A
32	0.0209	0.1108	1.9010; -1.9010	0.1312; 0.1312
33	0.0578	0.1194	N/A	N/A
34	0.1978	0.0216	1.3691; -1.3691	0.0221; 0.0221
35	-0.3594	0.1221	N/A	N/A

Table 7.C.9 (continuation)

Item				
Sequence	b-parameter	b-parameter SE	d-parameters	d-parameters SE
36	-0.5348	0.0281	N/A	N/A
37	-0.0059	0.0259	N/A	N/A
38	-0.1211	0.1227	N/A	N/A
39	-0.1053	0.0247	N/A	N/A
40	0.7088	0.0261	N/A	N/A
41	1.3979	0.1495	N/A	N/A
42	0.2155	0.1153	N/A	N/A
43	0.6868	0.1217	N/A	N/A
44	1.4244	0.0291	N/A	N/A
45	0.4019	0.0248	N/A	N/A
46	0.0968	0.1143	N/A	N/A
47	-0.4687	0.0255	N/A	N/A
48	0.5808	0.1100	0.9340; -0.9340	0.1337; 0.1337
49	0.4807	0.0251	N/A	N/A
50	1.1476	0.0280	N/A	N/A
51	1.4892	0.1616	N/A	N/A
52	-0.1379	0.0961	1.2667; -1.2667	0.1134; 0.1134

Table 7.C.10 IRT Item Difficulty on the Regular Form for Grade Four

Item Sequence	<i>b</i> -parameter	<i>b</i> -parameter SE	<i>d</i> -parameters	<i>d</i> -parameters SE
1	0.1946	0.0268	N/A	N/A
2	-0.7939	0.0295	N/A	N/A
3	-1.1977	0.0295	N/A	N/A
4	-0.4476	0.0292	2.1452; -2.1452	0.0292; 0.0292
5	0.3455	0.0271	N/A	N/A
6	1.4046	0.0311	N/A	N/A
7	0.2318	0.0267	N/A	N/A
8	0.3445	0.0268	N/A	N/A
9	-0.3102	0.0234	1.3382; -1.3382	0.0244; 0.0244
10	-0.4399	0.0273	N/A	N/A
11	-0.2415	0.0266	N/A	N/A
12	0.1332	0.0222	1.1102; -1.1102	0.0235; 0.0235
13	-1.2712	0.0315	N/A	N/A
14	0.4263	0.0275	N/A	N/A
15	-0.0796	0.0241	1.5635; -1.5635	0.0244; 0.0244
16	0.5570	0.0271	N/A	N/A
17	0.4826	0.0276	N/A	N/A
18	-0.6155	0.0230	1.1586; -1.1586	0.0244; 0.0244
19	0.9561	0.0292	N/A	N/A
20	-0.3724	0.0247	1.6450; -1.6450	0.0248; 0.0248
21	0.2433	0.0271	N/A	N/A
22	0.7819	0.0283	N/A	N/A
23	1.7818	0.0338	N/A	N/A
24	-1.0379	0.0346	2.1629; -2.1629	0.0343; 0.0343
25	-0.7531	0.0281	N/A	N/A
26	-0.3516	0.0272	N/A	N/A
27	0.4791	0.0274	N/A	N/A
28	-1.5356	0.0333	N/A	N/A
29	0.3873	0.0271	N/A	N/A
30	0.0812	0.0266	N/A	N/A
31	-0.2000	0.0285	N/A	N/A
32	1.1308	0.0304	N/A	N/A
33	0.5834	0.0281	N/A	N/A
34	-0.8290	0.0285	N/A	N/A
35	-0.2762	0.0274	N/A	N/A

Table 7.C.10 (continuation)

Item					
Sequence	b-parameter	b-parameter SE	d-parameters	d-parameters SE	
36	0.3492	0.0270	N/A	N/A	N/A
37	-0.3248	0.0270	N/A	N/A	N/A
38	-0.1615	0.0272	N/A	N/A	N/A
39	0.7695	0.0285	N/A	N/A	N/A
40	-1.6299	0.0332	1.0961; -1.0961	0.0357; 0.0357	
41	-0.7902	0.0286	N/A	N/A	N/A
42	-1.8209	0.0401	1.3525; -1.3525	0.0420; 0.0420	
43	0.1699	0.0273	N/A	N/A	N/A
44	0.4980	0.0220	0.2155; -0.2155	0.0258; 0.0258	
45	1.1658	0.0300	N/A	N/A	N/A
46	1.6418	0.0327	N/A	N/A	N/A
47	0.6337	0.0288	N/A	N/A	N/A
48	0.0556	0.0282	N/A	N/A	N/A
49	-0.4048	0.0217	0.8607; -0.8607	0.0232; 0.0232	
50	0.5283	0.0275	N/A	N/A	N/A
51	-0.6226	0.0245	1.2349; -1.2349	0.0260; 0.0260	
52	0.4002	0.0272	N/A	N/A	N/A

Table 7.C.11 IRT Item Difficulty on the Accommodated Form for Grade Four

Item Sequence	<i>b</i> -parameter	<i>b</i> -parameter SE	<i>d</i> -parameters	<i>d</i> -parameters SE
1	-0.8358	0.1182	N/A	N/A
2	-0.2814	0.0845	1.1189; -1.1189	0.1068; 0.1068
3	-1.1977	0.0295	N/A	N/A
4	0.3455	0.0271	N/A	N/A
5	1.4046	0.0311	N/A	N/A
6	-1.4500	0.1131	0.9354; -0.9354	0.1351; 0.1351
7	0.2318	0.0267	N/A	N/A
8	0.3445	0.0268	N/A	N/A
9	-0.4399	0.0273	N/A	N/A
10	-0.2415	0.0266	N/A	N/A
11	0.4263	0.0275	N/A	N/A
12	0.2790	0.1178	N/A	N/A
13	-0.3857	0.1123	N/A	N/A
14	1.0940	0.1315	N/A	N/A
15	0.5570	0.0271	N/A	N/A
16	-0.6155	0.0230	1.1586; -1.1586	0.0244; 0.0244
17	0.1794	0.1305	2.2701; -2.2701	0.1390; 0.1390
18	-0.3724	0.0247	1.6450; -1.6450	0.0248; 0.0248
19	0.9642	0.1387	N/A	N/A
20	1.3638	0.1394	N/A	N/A
21	-0.0541	0.1067	N/A	N/A
22	1.7818	0.0338	N/A	N/A
23	-0.7531	0.0281	N/A	N/A
24	-0.3516	0.0272	N/A	N/A
25	0.4791	0.0274	N/A	N/A
26	0.3873	0.0271	N/A	N/A
27	0.0812	0.0266	N/A	N/A
28	0.6694	0.1229	N/A	N/A
29	0.0627	0.1139	N/A	N/A
30	0.1817	0.1203	N/A	N/A
31	1.1308	0.0304	N/A	N/A
32	-0.2263	0.1238	N/A	N/A
33	-0.3248	0.0270	N/A	N/A
34	-0.8290	0.0285	N/A	N/A
35	0.3492	0.0270	N/A	N/A

Table 7.C.11 (continuation)

Item				
Sequence	b-parameter	b-parameter SE	d-parameters	d-parameters SE
36	0.8567	0.1243	N/A	N/A
37	-0.1615	0.0272	N/A	N/A
38	-0.9318	0.1226	N/A	N/A
39	-1.0548	0.1265	N/A	N/A
40	0.1699	0.0273	N/A	N/A
41	-1.6299	0.0332	1.0961; -1.0961	0.0357; 0.0357
42	0.4299	0.0941	0.7803; -0.7803	0.1182; 0.1182
43	0.2545	0.1207	N/A	N/A
44	0.8269	0.1289	N/A	N/A
45	0.3998	0.1105	1.6100; -1.6100	0.1238; 0.1238
46	1.6418	0.0327	N/A	N/A
47	0.6337	0.0288	N/A	N/A
48	0.0556	0.0282	N/A	N/A
49	-0.4048	0.0217	0.8607; -0.8607	0.0232; 0.0232
50	0.5283	0.0275	N/A	N/A
51	0.4002	0.0272	N/A	N/A
52	-0.0541	0.1128	N/A	N/A

Table 7.C.12 IRT Item Difficulty on the Regular Form for Grade Five

Item Sequence	<i>b</i> -parameter	<i>b</i> -parameter SE	<i>d</i> -parameters	<i>d</i> -parameters SE
1	0.0763	0.0225	1.0424; -1.0424	0.0248; 0.0248
2	-0.8227	0.0310	N/A	N/A
3	-1.8319	0.0377	N/A	N/A
4	-0.9859	0.0318	N/A	N/A
5	-0.1467	0.0285	N/A	N/A
6	-1.1493	0.0340	1.7652; -1.7652	0.0354; 0.0354
7	0.7734	0.0262	1.2120; -1.2120	0.0280; 0.0280
8	0.9549	0.0315	N/A	N/A
9	-0.1893	0.0245	1.4529; -1.4529	0.0263; 0.0263
10	-0.4003	0.0297	N/A	N/A
11	0.2280	0.0286	N/A	N/A
12	1.4212	0.0333	N/A	N/A
13	0.6721	0.0294	N/A	N/A
14	0.4751	0.0288	N/A	N/A
15	1.4228	0.0329	N/A	N/A
16	-0.5478	0.0291	N/A	N/A
17	0.0040	0.0236	1.2153; -1.2153	0.0258; 0.0258
18	1.2435	0.0322	N/A	N/A
19	0.3152	0.0234	1.0182; -1.0182	0.0260; 0.0260
20	0.4241	0.0287	N/A	N/A
21	0.1880	0.0294	N/A	N/A
22	0.4235	0.0286	N/A	N/A
23	0.8323	0.0258	0.9398; -0.9398	0.0285; 0.0285
24	0.1682	0.0288	N/A	N/A
25	0.8425	0.0308	N/A	N/A
26	0.3437	0.0299	N/A	N/A
27	0.0152	0.0296	N/A	N/A
28	-0.6199	0.0232	0.6619; -0.6619	0.0269; 0.0269
29	1.1997	0.0315	N/A	N/A
30	-0.1532	0.0282	N/A	N/A
31	-0.0087	0.0289	N/A	N/A
32	-0.2334	0.0282	N/A	N/A
33	0.5640	0.0251	0.9134; -0.9134	0.0276; 0.0276
34	0.5543	0.0290	N/A	N/A
35	-0.0556	0.0287	N/A	N/A

Table 7.C.12 (continuation)

Item					
Sequence	b-parameter	b-parameter SE	d-parameters	d-parameters SE	
36	0.0081	0.0298	N/A	N/A	N/A
37	0.8982	0.0301	N/A	N/A	N/A
38	0.2935	0.0225	0.7743; -0.7743	0.0259; 0.0259	
39	-0.6172	0.0297	N/A	N/A	N/A
40	0.8569	0.0326	N/A	N/A	N/A
41	-0.8671	0.0328	N/A	N/A	N/A
42	-0.6437	0.0319	N/A	N/A	N/A
43	0.6037	0.0291	N/A	N/A	N/A
44	0.6577	0.0300	N/A	N/A	N/A
45	0.5085	0.0295	N/A	N/A	N/A
46	2.1103	0.0400	N/A	N/A	N/A
47	0.4226	0.0288	N/A	N/A	N/A
48	-0.0712	0.0288	N/A	N/A	N/A
49	-0.0889	0.0285	N/A	N/A	N/A
50	0.9071	0.0302	N/A	N/A	N/A
51	-0.2837	0.0289	N/A	N/A	N/A
52	-0.8859	0.0310	N/A	N/A	N/A

Table 7.C.13 IRT Item Difficulty on the Accommodated Form for Grade Five

Item Sequence	<i>b</i> -parameter	<i>b</i> -parameter SE	<i>d</i> -parameters	<i>d</i> -parameters SE
1	-0.5616	0.1120	N/A	N/A
2	-1.1468	0.1286	N/A	N/A
3	-0.8227	0.0310	N/A	N/A
4	-0.9859	0.0318	N/A	N/A
5	-0.1467	0.0285	N/A	N/A
6	-1.1493	0.0340	1.7652; -1.7652	0.0354; 0.0354
7	0.7734	0.0262	1.2120; -1.2120	0.0280; 0.0280
8	-0.0800	0.1126	N/A	N/A
9	-0.1893	0.0245	1.4529; -1.4529	0.0263; 0.0263
10	0.6163	0.1204	1.7417; -1.7417	0.1334; 0.1334
11	0.2280	0.0286	N/A	N/A
12	1.4212	0.0333	N/A	N/A
13	0.6721	0.0294	N/A	N/A
14	0.4751	0.0288	N/A	N/A
15	1.4228	0.0329	N/A	N/A
16	-0.5478	0.0291	N/A	N/A
17	1.2435	0.0322	N/A	N/A
18	0.4241	0.0287	N/A	N/A
19	0.1880	0.0294	N/A	N/A
20	0.4235	0.0286	N/A	N/A
21	0.1682	0.0288	N/A	N/A
22	-0.3339	0.0948	1.5206; -1.5206	0.1112; 0.1112
23	0.1542	0.1146	N/A	N/A
24	-0.6199	0.0232	0.6619; -0.6619	0.0269; 0.0269
25	0.8094	0.1196	N/A	N/A
26	0.4135	0.1146	1.9305; -1.9305	0.1321; 0.1321
27	1.1997	0.0315	N/A	N/A
28	-0.1532	0.0282	N/A	N/A
29	-0.0087	0.0289	N/A	N/A
30	0.5543	0.0290	N/A	N/A
31	-0.0556	0.0287	N/A	N/A
32	0.8982	0.0301	N/A	N/A
33	-0.0444	0.0861	1.0805; -1.0805	0.1059; 0.1059
34	-0.2334	0.0282	N/A	N/A
35	-0.3305	0.1121	N/A	N/A

Table 7.C.13 (continuation)

Item				
Sequence	b-parameter	b-parameter SE	d-parameters	d-parameters SE
36	0.0763	0.0225	1.0424; -1.0424	0.0248; 0.0248
37	-0.6172	0.0297	N/A	N/A
38	-0.6870	0.0963	1.2769; -1.2769	0.1148; 0.1148
39	-0.6437	0.0319	N/A	N/A
40	-0.8671	0.0328	N/A	N/A
41	0.6037	0.0291	N/A	N/A
42	1.9141	0.1621	N/A	N/A
43	-0.0688	0.1114	N/A	N/A
44	1.2174	0.1446	N/A	N/A
45	0.4226	0.0288	N/A	N/A
46	2.1103	0.0400	N/A	N/A
47	0.4445	0.1185	N/A	N/A
48	-0.2793	0.0883	1.2852; -1.2852	0.1086; 0.1086
49	-0.0889	0.0285	N/A	N/A
50	0.9071	0.0302	N/A	N/A
51	1.1372	0.1278	N/A	N/A
52	1.5793	0.1471	N/A	N/A

Table 7.C.14 IRT Item Difficulty on the Regular Form for Grade Six

Item Sequence	<i>b</i> -parameter	<i>b</i> -parameter SE	<i>d</i> -parameters	<i>d</i> -parameters SE
1	0.2966	0.0335	N/A	N/A
2	1.8783	0.0447	N/A	N/A
3	-0.0792	0.0247	0.4534; -0.4534	0.0300; 0.0300
4	-1.1401	0.0380	N/A	N/A
5	-1.9131	0.0462	N/A	N/A
6	-1.7785	0.0443	N/A	N/A
7	-1.9337	0.0569	1.4442; -1.4442	0.0605; 0.0605
8	-1.0566	0.0392	N/A	N/A
9	0.2133	0.0284	1.2614; -1.2614	0.0305; 0.0305
10	0.5282	0.0275	0.9088; -0.9088	0.0314; 0.0314
11	0.0237	0.0335	N/A	N/A
12	0.2501	0.0336	N/A	N/A
13	-0.5479	0.0346	N/A	N/A
14	0.3361	0.0340	N/A	N/A
15	0.1968	0.0262	0.7734; -0.7734	0.0303; 0.0303
16	-0.0757	0.0341	N/A	N/A
17	-0.8630	0.0311	0.9984; -0.9984	0.0352; 0.0352
18	-0.1003	0.0332	N/A	N/A
19	0.2265	0.0343	N/A	N/A
20	-1.4163	0.0398	N/A	N/A
21	0.7613	0.0358	N/A	N/A
22	0.3778	0.0334	N/A	N/A
23	-0.4121	0.0344	N/A	N/A
24	1.6849	0.0419	N/A	N/A
25	-0.0442	0.0335	N/A	N/A
26	1.4438	0.0404	N/A	N/A
27	0.3380	0.0259	0.5911; -0.5911	0.0309; 0.0309
28	0.9536	0.0361	N/A	N/A
29	0.1427	0.0330	N/A	N/A
30	-1.2388	0.0324	0.5015; -0.5015	0.0391; 0.0391
31	-1.0063	0.0380	N/A	N/A
32	0.0565	0.0333	N/A	N/A
33	0.2423	0.0336	N/A	N/A
34	0.1263	0.0342	N/A	N/A
35	1.1188	0.0368	N/A	N/A

Table 7.C.14 (continuation)

Item					
Sequence	b-parameter	b-parameter SE	d-parameters	d-parameters SE	
36	0.7048	0.0347	N/A	N/A	N/A
37	1.0641	0.0364	N/A	N/A	N/A
38	-0.8546	0.0362	N/A	N/A	N/A
39	-0.4887	0.0288	1.1485; -1.1485	0.0322; 0.0322	
40	-0.8396	0.0296	0.7521; -0.7521	0.0338; 0.0338	
41	1.0367	0.0373	N/A	N/A	N/A
42	-0.3016	0.0347	N/A	N/A	N/A
43	-0.1013	0.0337	N/A	N/A	N/A
44	0.3999	0.0343	N/A	N/A	N/A
45	-1.0011	0.0339	1.2881; -1.2881	0.0377; 0.0377	
46	-0.5061	0.0281	0.8119; -0.8119	0.0316; 0.0316	
47	1.8589	0.0455	N/A	N/A	N/A
48	-0.6922	0.0362	N/A	N/A	N/A
49	-0.0035	0.0263	0.9320; -0.9320	0.0295; 0.0295	
50	0.8607	0.0363	N/A	N/A	N/A
51	-0.2350	0.0334	N/A	N/A	N/A
52	-0.0300	0.0340	N/A	N/A	N/A

Table 7.C.15 IRT Item Difficulty on the Accommodated Form for Grade Six

Item Sequence	<i>b</i> -parameter	<i>b</i> -parameter SE	<i>d</i> -parameters	<i>d</i> -parameters SE
1	-0.5743	0.1634	N/A	N/A
2	-0.1042	0.1576	N/A	N/A
3	-0.0792	0.0247	0.4534; -0.4534	0.0300; 0.0300
4	-1.1401	0.0380	N/A	N/A
5	0.3594	0.1633	N/A	N/A
6	0.7561	0.1740	N/A	N/A
7	0.3814	0.1688	N/A	N/A
8	-1.9337	0.0569	1.4442; -1.4442	0.0605; 0.0605
9	0.3737	0.1578	N/A	N/A
10	0.2133	0.0284	1.2614; -1.2614	0.0305; 0.0305
11	0.0101	0.1701	N/A	N/A
12	-0.2146	0.1263	1.2601; -1.2601	0.1575; 0.1575
13	1.2859	0.1958	N/A	N/A
14	0.3361	0.0340	N/A	N/A
15	-0.1003	0.0332	N/A	N/A
16	1.1446	0.1853	N/A	N/A
17	0.2265	0.0343	N/A	N/A
18	0.3778	0.0334	N/A	N/A
19	1.6849	0.0419	N/A	N/A
20	0.0957	0.1680	N/A	N/A
21	-1.1270	0.1673	1.4105; -1.4105	0.1871; 0.1871
22	-0.5000	0.1632	N/A	N/A
23	0.1427	0.0330	N/A	N/A
24	0.9536	0.0361	N/A	N/A
25	0.0565	0.0333	N/A	N/A
26	0.2423	0.0336	N/A	N/A
27	-1.2388	0.0324	0.5015; -0.5015	0.0391; 0.0391
28	-1.0063	0.0380	N/A	N/A
29	-1.2951	0.1377	-0.1324; 0.1324	0.1982; 0.1982
30	1.1188	0.0368	N/A	N/A
31	0.7048	0.0347	N/A	N/A
32	1.0641	0.0364	N/A	N/A
33	-0.8546	0.0362	N/A	N/A
34	-0.8396	0.0296	0.7521; -0.7521	0.0338; 0.0338
35	1.0367	0.0373	N/A	N/A

Table 7.C.15 (continuation)

Item				
Sequence	b-parameter	b-parameter SE	d-parameters	d-parameters SE
36	-0.3016	0.0347	N/A	N/A
37	3.0008	0.3654	N/A	N/A
38	-0.7363	0.1164	0.4625; -0.4625	0.1603; 0.1603
39	-0.2484	0.1606	N/A	N/A
40	-0.6922	0.0362	N/A	N/A
41	-0.0035	0.0263	0.9320; -0.9320	0.0295; 0.0295
42	-1.3975	0.1768	1.3985; -1.3985	0.1946; 0.1946
43	-1.0011	0.0339	1.2881; -1.2881	0.0377; 0.0377
44	0.1043	0.1593	N/A	N/A
45	-0.4957	0.1555	N/A	N/A
46	1.2140	0.1917	N/A	N/A
47	-0.1013	0.0337	N/A	N/A
48	0.1893	0.1631	N/A	N/A
49	-0.2350	0.0334	N/A	N/A
50	0.8607	0.0363	N/A	N/A
51	0.9599	0.1764	N/A	N/A
52	1.1313	0.1759	N/A	N/A

Table 7.C.16 IRT Item Difficulty on the Regular Form for Grade Seven

Item Sequence	<i>b</i> -parameter	<i>b</i> -parameter SE	<i>d</i> -parameters	<i>d</i> -parameters SE
1	0.4966	0.0396	N/A	N/A
2	0.5330	0.0301	0.4981; -0.4981	0.0381;0.0381
3	-1.2672	0.0399	0.5229; -0.5229	0.0480;0.0480
4	-1.1296	0.0463	N/A	N/A
5	-0.1652	0.0397	N/A	N/A
6	0.4711	0.0401	N/A	N/A
7	-0.5753	0.0414	N/A	N/A
8	0.3680	0.0399	N/A	N/A
9	0.0060	0.0413	N/A	N/A
10	0.4863	0.0399	N/A	N/A
11	0.0303	0.0323	1.1965; -1.1965	0.0363;0.0363
12	0.4408	0.0402	N/A	N/A
13	0.9806	0.0425	N/A	N/A
14	0.7310	0.0412	N/A	N/A
15	-0.5399	0.0347	1.1763; -1.1763	0.0385; 0.0385
16	-0.1162	0.0308	0.9233; -0.9233	0.0352; 0.0352
17	0.7135	0.0411	N/A	N/A
18	-0.1583	0.0429	N/A	N/A
19	0.4303	0.0411	N/A	N/A
20	1.1432	0.0441	N/A	N/A
21	-0.1957	0.0396	N/A	N/A
22	0.4532	0.0409	N/A	N/A
23	-0.1398	0.0400	N/A	N/A
24	0.1459	0.0402	N/A	N/A
25	1.3176	0.0463	N/A	N/A
26	-0.3673	0.0412	N/A	N/A
27	-0.8038	0.0401	1.5171; -1.5171	0.0427; 0.0427
28	-0.9756	0.0394	1.2178; -1.2178	0.0433; 0.0433
29	0.3754	0.0418	N/A	N/A
30	0.6171	0.0409	N/A	N/A
31	0.2328	0.0333	1.2456; -1.2456	0.0370; 0.0370
32	0.0475	0.0303	0.9056; -0.9056	0.0351; 0.0351
33	-0.1891	0.0392	N/A	N/A
34	0.7799	0.0412	N/A	N/A
35	0.5301	0.0320	0.7895; -0.7895	0.0377; 0.0377

Table 7.C.16 (continuation)

Item				
Sequence	b-parameter	b-parameter SE	d-parameters	d-parameters SE
36	-2.3470	0.0640	N/A	N/A
37	0.3522	0.0418	N/A	N/A
38	0.3062	0.0392	N/A	N/A
39	0.4141	0.0400	N/A	N/A
40	0.2619	0.0392	N/A	N/A
41	-0.9628	0.0430	1.5909; -1.5909	0.0462; 0.0462
42	1.2698	0.0485	N/A	N/A
43	0.2547	0.0402	N/A	N/A
44	0.7992	0.0362	1.1771; -1.1771	0.0404; 0.0404
45	0.4188	0.0397	N/A	N/A
46	-0.2401	0.0388	N/A	N/A
47	0.7078	0.0409	N/A	N/A
48	3.2383	0.0883	N/A	N/A
49	1.0530	0.0450	N/A	N/A
50	0.4441	0.0423	N/A	N/A
51	0.1662	0.0296	0.5749; -0.5749	0.0363; 0.0363
52	0.0726	0.0420	N/A	N/A

Table 7.C.17 IRT Item Difficulty on the Accommodated Form for Grade Seven

Item Sequence	<i>b</i> -parameter	<i>b</i> -parameter SE	<i>d</i> -parameters	<i>d</i> -parameters SE
1	-1.6826	0.2740	N/A	N/A
2	-1.2672	0.0399	0.5229; -0.5229	0.0480; 0.0480
3	-0.7073	0.1847	1.4005; -1.4005	0.2165; 0.2165
4	-1.1296	0.0463	N/A	N/A
5	-0.1652	0.0397	N/A	N/A
6	0.4711	0.0401	N/A	N/A
7	-1.2872	0.2470	1.4111; -1.4111	0.2813; 0.2813
8	0.4966	0.0396	N/A	N/A
9	-0.7102	0.1943	N/A	N/A
10	0.4221	0.1637	0.9722; -0.9722	0.2098; 0.2098
11	1.0693	0.2369	N/A	N/A
12	0.8656	0.2209	N/A	N/A
13	0.7310	0.0412	N/A	N/A
14	0.4408	0.0402	N/A	N/A
15	0.9806	0.0425	N/A	N/A
16	0.4863	0.0399	N/A	N/A
17	-0.1162	0.0308	0.9233; -0.9233	0.0352; 0.0352
18	1.1470	0.2322	N/A	N/A
19	0.7135	0.0411	N/A	N/A
20	1.1432	0.0441	N/A	N/A
21	-0.1957	0.0396	N/A	N/A
22	0.4532	0.0409	N/A	N/A
23	-0.1398	0.0400	N/A	N/A
24	-0.7004	0.2284	N/A	N/A
25	1.3176	0.0463	N/A	N/A
26	-0.8038	0.0401	1.5171; -1.5171	0.0427; 0.0427
27	-0.9756	0.0394	1.2178; -1.2178	0.0433; 0.0433
28	1.8611	0.3089	N/A	N/A
29	0.1414	0.1940	N/A	N/A
30	1.1170	0.2501	N/A	N/A
31	0.6171	0.0409	N/A	N/A
32	0.5546	0.1950	N/A	N/A
33	-0.4488	0.1565	0.8281; -0.8281	0.1946; 0.1946
34	0.0475	0.0303	0.9056; -0.9056	0.0351; 0.0351
35	-0.1891	0.0392	N/A	N/A

Table 7.C.17 (continuation)

Item					
Sequence	b-parameter	b-parameter SE	d-parameters	d-parameters SE	
36	0.7799	0.0412	N/A	N/A	N/A
37	1.7571	0.2929	N/A	N/A	N/A
38	0.3062	0.0392	N/A	N/A	N/A
39	0.4141	0.0400	N/A	N/A	N/A
40	0.2619	0.0392	N/A	N/A	N/A
41	-0.0137	0.2090	N/A	N/A	N/A
42	0.7818	0.2198	N/A	N/A	N/A
43	0.2547	0.0402	N/A	N/A	N/A
44	0.7992	0.0362	1.1771; -1.1771	0.0404; 0.0404	
45	-0.2401	0.0388	N/A	N/A	N/A
46	0.4188	0.0397	N/A	N/A	N/A
47	-0.1726	0.1610	1.1717; -1.1717	0.1910; 0.1910	
48	0.7078	0.0409	N/A	N/A	N/A
49	3.2383	0.0883	N/A	N/A	N/A
50	1.0530	0.0450	N/A	N/A	N/A
51	0.4441	0.0423	N/A	N/A	N/A
52	0.7433	0.2093	N/A	N/A	N/A

Table 7.C.18 IRT Item Difficulty on the Regular Form for Grade Eight

Item Sequence	<i>b</i> -parameter	<i>b</i> -parameter SE	<i>d</i> -parameters	<i>d</i> -parameters SE
1	-1.4673	0.0546	N/A	N/A
2	-0.7485	0.0386	0.6697; -0.6697	0.0450; 0.0450
3	-0.1089	0.0452	N/A	N/A
4	-1.4623	0.0573	N/A	N/A
5	-0.3339	0.0405	1.3357; -1.3357	0.0432; 0.0432
6	-1.1043	0.0537	1.6568; -1.6568	0.0559; 0.0559
7	-0.1190	0.0471	N/A	N/A
8	0.3983	0.0458	N/A	N/A
9	-0.7150	0.0383	0.7631; -0.7631	0.0451; 0.0451
10	0.4158	0.0465	N/A	N/A
11	-0.5919	0.0473	N/A	N/A
12	0.6139	0.0469	N/A	N/A
13	-0.0319	0.0450	N/A	N/A
14	-0.2713	0.0470	N/A	N/A
15	0.9033	0.0493	N/A	N/A
16	1.4399	0.0547	N/A	N/A
17	-0.1618	0.0464	N/A	N/A
18	0.4911	0.0473	N/A	N/A
19	-0.3758	0.0455	1.8342; -1.8342	0.0475; 0.0475
20	0.2177	0.0343	0.5587; -0.5587	0.0411; 0.0411
21	-0.2412	0.0352	0.7514; -0.7514	0.0413; 0.0413
22	0.7780	0.0480	N/A	N/A
23	-1.7689	0.0593	0.4240; -0.4240	0.0708; 0.0708
24	-0.4232	0.0468	N/A	N/A
25	0.1745	0.0458	N/A	N/A
26	1.0865	0.0506	N/A	N/A
27	1.0176	0.0494	1.5418; -1.5418	0.0518; 0.0518
28	0.0371	0.0368	1.0003; -1.0003	0.0412; 0.0412
29	0.8074	0.0494	N/A	N/A
30	-0.6822	0.0486	N/A	N/A
31	-0.4032	0.0451	1.7652; -1.7652	0.0466; 0.0466
32	0.5530	0.0491	N/A	N/A
33	1.3489	0.0530	N/A	N/A
34	0.0382	0.0457	N/A	N/A
35	0.0449	0.0456	N/A	N/A

Table 7.C.18 (continuation)

Item					
Sequence	b-parameter	b-parameter SE	d-parameters	d-parameters SE	
36	0.7255	0.0477	N/A	N/A	N/A
37	0.0821	0.0477	N/A	N/A	N/A
38	0.4743	0.0475	N/A	N/A	N/A
39	0.8545	0.0401	0.7608; -0.7608	0.0463; 0.0463	
40	0.3895	0.0458	N/A	N/A	N/A
41	-0.8225	0.0515	N/A	N/A	N/A
42	1.0924	0.0514	N/A	N/A	N/A
43	-0.3626	0.0363	0.7410; -0.7410	0.0427; 0.0427	
44	0.2638	0.0496	N/A	N/A	N/A
45	1.6089	0.0584	N/A	N/A	N/A
46	0.0976	0.0472	N/A	N/A	N/A
47	-1.1479	0.0588	1.9632; -1.9632	0.0610; 0.0610	
48	-0.0352	0.0470	N/A	N/A	N/A
49	-0.1109	0.0478	N/A	N/A	N/A
50	0.4919	0.0474	N/A	N/A	N/A
51	-0.5340	0.0497	N/A	N/A	N/A
52	-0.3021	0.0463	N/A	N/A	N/A

Table 7.C.19 IRT Item Difficulty on the Accommodated Form for Grade Eight

Item Sequence	<i>b</i> -parameter	<i>b</i> -parameter SE	<i>d</i> -parameters	<i>d</i> -parameters SE
1	-1.4673	0.0546	N/A	N/A
2	-0.7485	0.0386	0.6697; -0.6697	0.0450; 0.0450
3	-0.1089	0.0452	N/A	N/A
4	-1.4623	0.0573	N/A	N/A
5	-1.1043	0.0537	1.6568; -1.6568	0.0559; 0.0559
6	-0.4223	0.2682	N/A	N/A
7	0.2424	0.2906	N/A	N/A
8	-0.1190	0.0471	N/A	N/A
9	0.3983	0.0458	N/A	N/A
10	0.4158	0.0465	N/A	N/A
11	-0.5919	0.0473	N/A	N/A
12	0.6139	0.0469	N/A	N/A
13	-0.0319	0.0450	N/A	N/A
14	-0.2713	0.0470	N/A	N/A
15	0.3015	0.2697	N/A	N/A
16	0.9033	0.0493	N/A	N/A
17	1.4399	0.0547	N/A	N/A
18	0.6834	0.3090	N/A	N/A
19	1.0556	0.3676	N/A	N/A
20	0.9753	0.3044	N/A	N/A
21	0.2177	0.0343	0.5587; -0.5587	0.0411; 0.0411
22	0.9501	0.3039	N/A	N/A
23	-1.7689	0.0593	0.4240; -0.4240	0.0708; 0.0708
24	0.7780	0.0480	N/A	N/A
25	-0.4232	0.0468	N/A	N/A
26	1.0865	0.0506	N/A	N/A
27	1.5012	0.3613	N/A	N/A
28	1.0176	0.0494	1.5418; -1.5418	0.0518; 0.0518
29	0.9753	0.3349	N/A	N/A
30	0.2424	0.2818	N/A	N/A
31	0.5530	0.0491	N/A	N/A
32	0.6834	0.2972	N/A	N/A
33	1.3489	0.0530	N/A	N/A
34	0.1841	0.2899	N/A	N/A
35	0.0449	0.0456	N/A	N/A

Table 7.C.19 (continuation)

Item					
Sequence	b-parameter	b-parameter SE	d-parameters	d-parameters SE	
36	0.0382	0.0457	N/A	N/A	N/A
37	0.7255	0.0477	N/A	N/A	N/A
38	0.7528	0.3187	N/A	N/A	N/A
39	0.3895	0.0458	N/A	N/A	N/A
40	1.0924	0.0514	N/A	N/A	N/A
41	0.8986	0.3062	N/A	N/A	N/A
42	0.2638	0.0496	N/A	N/A	N/A
43	0.6834	0.3110	N/A	N/A	N/A
44	0.7983	0.3340	N/A	N/A	N/A
45	1.0303	0.3674	N/A	N/A	N/A
46	0.0976	0.0472	N/A	N/A	N/A
47	-1.1479	0.0588	1.9632; -1.9632	0.0610; 0.0610	
48	-0.1109	0.0478	N/A	N/A	N/A
49	0.4919	0.0474	N/A	N/A	N/A
50	1.2963	0.3741	N/A	N/A	N/A
51	-0.3021	0.0463	N/A	N/A	N/A
52	0.5497	0.2992	N/A	N/A	N/A

Table 7.C.20 IRT Item Difficulty on the Regular Form for High School

Item Sequence	<i>b</i> -parameter	<i>b</i> -parameter SE	<i>d</i> -parameters	<i>d</i> -parameters SE
1	0.7550	0.0391	N/A	N/A
2	0.1897	0.0368	N/A	N/A
3	-1.2144	0.0437	1.5383; -1.5383	0.0464; 0.0464
4	-0.4291	0.0366	N/A	N/A
5	0.1108	0.0362	N/A	N/A
6	-0.0620	0.0362	N/A	N/A
7	-0.8796	0.0377	1.5225; -1.5225	0.0408; 0.0408
8	0.3966	0.0366	N/A	N/A
9	0.1187	0.0361	N/A	N/A
10	-0.3824	0.0297	1.0605; -1.0605	0.0338; 0.0338
11	0.5589	0.0375	N/A	N/A
12	-0.8303	0.0386	1.6435; -1.6435	0.0416; 0.0416
13	0.4560	0.0372	N/A	N/A
14	0.9764	0.0392	N/A	N/A
15	0.3694	0.0370	N/A	N/A
16	0.0967	0.0364	N/A	N/A
17	0.7684	0.0324	1.0169; -1.0169	0.0367; 0.0367
18	1.0733	0.0403	N/A	N/A
19	-0.2672	0.0305	1.2164; -1.2164	0.0337; 0.0337
20	-0.0381	0.0272	0.7695; -0.7695	0.0328; 0.0328
21	0.0749	0.0369	N/A	N/A
22	0.1880	0.0373	N/A	N/A
23	-0.0211	0.0370	N/A	N/A
24	1.0341	0.0397	N/A	N/A
25	-0.6395	0.0385	N/A	N/A
26	-0.2899	0.0373	N/A	N/A
27	0.9094	0.0397	N/A	N/A
28	0.1504	0.0361	N/A	N/A
29	-0.2856	0.0367	N/A	N/A
30	-0.2817	0.0371	N/A	N/A
31	-0.2601	0.0369	N/A	N/A
32	-0.4392	0.0296	0.9101; -0.9101	0.0341; 0.0341
33	1.2786	0.0417	N/A	N/A
34	1.2859	0.0425	N/A	N/A
35	0.8850	0.0388	N/A	N/A

Table 7.C.20 (continuation)

Item					
Sequence	b-parameter	b-parameter SE	d-parameters	d-parameters SE	
36	-0.6862	0.0392	N/A	N/A	N/A
37	0.2605	0.0368	N/A	N/A	N/A
38	1.3777	0.0442	N/A	N/A	N/A
39	-0.3895	0.0304	1.1247; -1.1247	0.0342; 0.0342	
40	0.0311	0.0366	N/A	N/A	N/A
41	-0.1601	0.0369	N/A	N/A	N/A
42	0.0558	0.0366	N/A	N/A	N/A
43	-0.6229	0.0382	N/A	N/A	N/A
44	0.4263	0.0391	N/A	N/A	N/A
45	-0.1858	0.0266	0.4723; -0.4723	0.0334; 0.0334	
46	0.7478	0.0380	N/A	N/A	N/A
47	0.9725	0.0399	N/A	N/A	N/A
48	0.8243	0.0390	N/A	N/A	N/A
49	-0.8687	0.0313	0.5776; -0.5776	0.0380; 0.0380	
50	0.2454	0.0372	N/A	N/A	N/A
51	0.9147	0.0394	N/A	N/A	N/A
52	0.2422	0.0318	1.4006; -1.4006	0.0346; 0.0346	

Table 7.C.21 IRT Item Difficulty on the Accommodated Form for High School

Item Sequence	<i>b</i> -parameter	<i>b</i> -parameter SE	<i>d</i> -parameters	<i>d</i> -parameters SE
1	0.7550	0.0391	N/A	N/A
2	-1.2144	0.0437	1.5383; -1.5383	0.0464; 0.0464
3	-0.4291	0.0366	N/A	N/A
4	0.1108	0.0362	N/A	N/A
5	0.1897	0.0368	N/A	N/A
6	-0.8796	0.0377	1.5225; -1.5225	0.0408; 0.0408
7	-0.2672	0.0305	1.2164; -1.2164	0.0337; 0.0337
8	-0.4267	0.1455	N/A	N/A
9	0.0749	0.0369	N/A	N/A
10	0.1880	0.0373	N/A	N/A
11	-0.0211	0.0370	N/A	N/A
12	-0.6395	0.0385	N/A	N/A
13	-0.2899	0.0373	N/A	N/A
14	-0.5803	0.1353	N/A	N/A
15	1.2312	0.1609	N/A	N/A
16	0.4892	0.1168	1.2680; -1.2680	0.1323; 0.1323
17	-0.0460	0.1369	N/A	N/A
18	-0.0891	0.1423	N/A	N/A
19	0.2452	0.1310	N/A	N/A
20	-0.4314	0.1392	N/A	N/A
21	0.0466	0.1337	N/A	N/A
22	0.2871	0.1446	N/A	N/A
23	1.7507	0.1752	N/A	N/A
24	0.1504	0.0361	N/A	N/A
25	-0.2856	0.0367	N/A	N/A
26	-0.2817	0.0371	N/A	N/A
27	-0.2601	0.0369	N/A	N/A
28	-0.4392	0.0296	0.9101; -0.9101	0.0341; 0.0341
29	0.5199	0.1412	N/A	N/A
30	0.1412	0.1400	N/A	N/A
31	0.8850	0.0388	N/A	N/A
32	0.8128	0.1448	N/A	N/A
33	-0.6862	0.0392	N/A	N/A
34	0.2605	0.0368	N/A	N/A
35	1.3777	0.0442	N/A	N/A

Table 7.C.21 (continuation)

Item	b-parameter	b-parameter SE	d-parameters	d-parameters SE
36	0.1094	0.1401	N/A	N/A
37	-0.3895	0.0304	1.1247; -1.1247	0.0342; 0.0342
38	-0.1601	0.0369	N/A	N/A
39	0.0558	0.0366	N/A	N/A
40	1.5349	0.1758	N/A	N/A
41	-0.1858	0.0266	0.4723; -0.4723	0.0334; 0.0334
42	0.8243	0.0390	N/A	N/A
43	0.2454	0.0372	N/A	N/A
44	1.6458	0.1800	N/A	N/A
45	1.4989	0.1647	N/A	N/A
46	0.2422	0.0318	1.4006; -1.4006	0.0346; 0.0346
47	0.1187	0.0361	N/A	N/A
48	0.5589	0.0375	N/A	N/A
49	-0.8303	0.0386	1.6435; -1.6435	0.0416; 0.0416
50	0.3694	0.0370	N/A	N/A
51	1.0733	0.0403	N/A	N/A
52	-0.4805	0.1529	2.2022; -2.2022	0.1667; 0.1667

Appendix 7.D: Item Parameters for the Linking Set for High School

For [Figure 7.D.1](#), the X-axis represents IRT b -parameters from the 2018–2019 base scale of the operational items on the regular form for high school. The Y-axis represents the IRT b -parameters from the 2018 fall field test calibration that were linked back to the base scale. The dotted line represents the function of $Y = X$. The closer the scatter plots to the dotted line, the smaller difference between the equated b -parameters from the 2018 field test to the calibrated b -parameters from the 2018–2019 operational test. A dot indicates that the item was dropped from the anchor set by robust- z statistics. [Figure 7.D.1](#) indicates the relationship between the base item difficulty parameters and equated item difficulty parameters from the 2018 fall field test, the first iteration of the robust- z evaluation for the anchor items for high school. Data used to create this graph is presented in [Table 7.D.1](#).

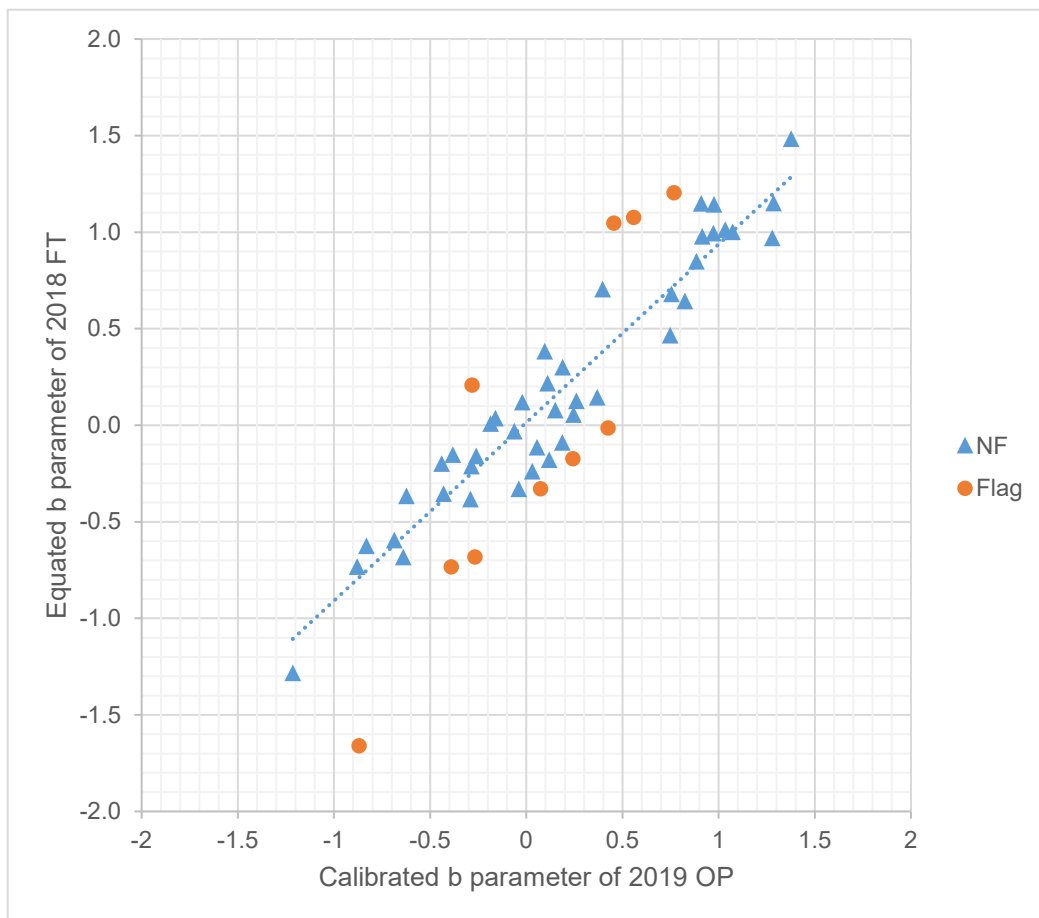


Figure 7.D.1 B -parameters from the 2018–2019 operational administration and 2018 field test for the anchor set for high school

Table 7.D.1 B-parameters from the Operational Test and Field Test for High School

Item Accnum	<i>b</i>-parameters from Operational Test	<i>b</i>-parameters from Field Test
VH684967	0.1897	0.2964
VH685015	-1.2144	-1.2858
VH685031	-0.4291	-0.3586
VH685040	0.1108	0.2139
VH685042	-0.0620	-0.0357
VH685130	-0.8796	-0.7359
VH689722	0.1504	0.0747
VH689753	-0.2856	-0.2161
VH689776	-0.2817	0.2079
VH689802	-0.2601	-0.1633
VH689833	-0.4392	-0.2025
VH689854	1.2786	0.9664
VH729834	0.7550	0.6766
VH883324	1.2859	1.1469
VH883325	0.0558	-0.1178
VH883326	0.8850	0.8456
VH883328	-0.6229	-0.3698
VH883329	-0.6862	-0.5978
VH883331	0.2605	0.1227
VH883332	1.3777	1.4805
VH883334	0.0311	-0.2426
VH883335	-0.3895	-0.7343
VH883336	-0.1601	0.0332
VH883385	0.3966	0.7013
VH883386	0.7684	1.2036
VH883389	-0.3824	-0.1563
VH883390	0.5589	1.0759
VH883391	-0.8303	-0.6275
VH883393	0.4560	1.0464
VH883396	0.9764	1.1395
VH883397	0.3694	0.1402
VH883398	0.0967	0.3800
VH883399	1.0733	0.9979
VH883402	0.1187	-0.1825
VH965697	-0.2899	-0.3857
VH965698	0.9094	1.1453

Table 7.D.1 (continuation)

Item Accnum	<i>b</i>-parameters from Operational Test	<i>b</i>-parameters from Field Test
VH965700	-0.0381	-0.3329
VH965702	0.0749	-0.3305
VH965703	0.1880	-0.0925
VH965705	-0.0211	0.1167
VH965708	1.0341	1.0093
VH965709	-0.6395	-0.6862
VH965711	-0.2672	-0.6834
VH965800	0.4263	-0.0152
VH965801	-0.1858	0.0051
VH965802	0.7478	0.4617
VH965803	0.9725	0.9906
VH965804	0.8243	0.6395
VH965805	0.2422	-0.1739
VH965806	0.2454	0.0517
VH965810	0.9147	0.9746
VH965812	-0.8687	-1.6608

Appendix 7.E: Response Time Analysis

Notes:

- Total raw scores were used to partition students into quartiles.
- All students who completed testing with a valid reporting scale score are included.

Table 7.E.1 Total Testing Time (in Minutes) at Each Raw Score Interval—Grade Three

Form	Raw Score Interval	N	Mean	Standard Deviation	Minimum	Maximum	% Pt. 1	% Pt. 10	% Pt. 25	% Pt. 50	% Pt. 75	% Pt. 90	% Pt. 99
1	0–21	1,861	79.64	69.03	2.73	1311.80	13.55	31.65	44.83	64.66	94.77	142.29	305.82
1	22–28	2,510	98.89	76.09	9.86	1506.82	22.38	43.68	59.14	82.55	116.77	169.14	317.96
1	29–35	2,104	108.24	66.44	21.74	1083.60	33.28	54.01	69.09	91.22	127.85	178.60	331.58
1	36–63	2,420	107.78	59.42	26.59	857.52	39.21	56.77	71.33	92.64	125.82	176.35	329.95
A	0–15	62	66.46	36.57	14.28	169.15	14.28	28.00	38.89	61.55	81.83	122.80	169.15
A	16–19	105	87.26	53.61	7.26	337.59	16.63	34.58	48.49	75.63	111.04	152.36	304.44
A	20–25	92	93.70	44.70	19.39	220.19	19.39	40.59	60.66	89.85	119.00	148.24	220.19
A	26–60	89	115.37	46.45	40.87	318.57	40.87	56.20	77.18	111.74	145.28	172.69	318.57

Table 7.E.2 Total Testing Time (in Minutes) at Each Raw Score Interval—Grade Four

Form	Raw Score Interval	N	Mean	Standard Deviation	Minimum	Maximum	% Pt. 1	% Pt. 10	% Pt. 25	% Pt. 50	% Pt. 75	% Pt. 90	% Pt. 99
1	0–24	1,720	81.89	51.20	6.75	463.42	15.60	33.37	48.45	69.65	100.22	145.87	269.24
1	25–31	2,170	101.15	57.77	16.08	582.72	25.40	47.61	62.66	86.63	124.99	169.29	299.14
1	32–38	1,769	110.76	57.45	25.38	569.61	34.94	54.71	72.41	97.83	133.91	182.52	310.95
1	39–64	2,122	108.27	51.86	25.22	561.65	39.52	57.27	72.20	95.61	131.14	174.99	273.66
A	0–19	95	78.65	50.14	8.76	264.51	8.76	23.44	42.67	70.60	108.03	138.00	264.51
A	20–22	81	73.91	49.76	12.29	338.40	12.29	31.80	46.48	61.66	90.56	121.83	338.40
A	23–29	112	97.33	51.97	9.08	356.91	25.79	44.51	61.29	90.42	127.39	158.64	247.80
A	30–61	104	121.74	58.89	37.19	347.09	46.16	62.92	79.56	104.66	149.54	194.71	318.22

Table 7.E.3 Total Testing Time (in Minutes) at Each Raw Score Interval—Grade Five

Form	Raw Score Interval	N	Mean	Standard Deviation	Minimum	Maximum	% Pt. 1	% Pt. 10	% Pt. 25	% Pt. 50	% Pt. 75	% Pt. 90	% Pt. 99
1	0–21	1,528	78.15	45.32	8.33	628.24	15.69	36.26	48.95	68.51	97.46	133.91	215.63
1	22–27	1,707	91.81	48.28	11.72	398.86	22.39	44.52	57.96	81.18	111.97	152.08	256.91
1	28–34	1,568	102.11	48.73	14.75	564.47	33.88	53.10	68.25	92.66	123.28	162.92	269.74
1	35–62	1,674	102.64	47.60	21.44	414.38	37.25	53.83	69.31	92.71	124.29	162.19	280.11
A	0–20	89	85.04	50.36	5.83	218.74	5.83	29.31	45.79	75.16	111.29	161.87	218.74
A	21–25	102	87.41	46.30	15.61	253.99	15.66	38.48	57.42	80.27	106.29	147.24	237.55
A	26–30	90	101.56	48.77	23.98	339.84	23.98	58.47	70.38	90.91	117.00	166.73	339.84
A	31–63	110	107.48	41.86	32.92	233.22	37.58	61.06	72.08	103.50	138.97	168.43	194.09

Table 7.E.4 Total Testing Time (in Minutes) at Each Raw Score Interval—Grade Six

Form	Raw Score Interval	N	Mean	Standard Deviation	Minimum	Maximum	% Pt. 1	% Pt. 10	% Pt. 25	% Pt. 50	% Pt. 75	% Pt. 90	% Pt. 99
1	0–26	1,092	87.50	49.54	5.64	575.14	17.32	38.85	56.90	77.60	106.41	145.12	269.93
1	27–33	1,172	97.46	46.32	17.61	325.25	28.88	50.53	66.43	86.60	118.54	156.65	271.86
1	34–39	1,048	101.27	43.50	20.86	362.90	36.86	56.50	70.78	90.79	121.52	157.27	247.48
1	40–65	1,269	98.90	38.01	31.19	298.06	43.11	58.10	72.01	90.97	117.71	151.05	224.79
A	0–22	46	87.23	64.83	26.89	459.41	26.89	39.87	50.09	81.87	100.22	135.95	459.41
A	23–27	49	91.01	44.77	8.67	215.33	8.67	34.17	55.28	91.53	117.09	140.25	215.33
A	28–32	54	103.62	45.37	31.47	236.76	31.47	58.97	70.42	100.62	126.34	179.62	236.76
A	33–64	62	97.00	33.81	46.22	193.22	46.22	63.97	71.14	86.63	116.04	141.48	193.22

Table 7.E.5 Total Testing Time (in Minutes) at Each Raw Score Interval—Grade Seven

Form	Raw Score Interval	N	Mean	Standard Deviation	Minimum	Maximum	% Pt. 1	% Pt. 10	% Pt. 25	% Pt. 50	% Pt. 75	% Pt. 90	% Pt. 99
1	0–23	772	74.73	39.70	4.77	251.74	12.25	31.22	45.65	66.90	96.36	126.36	193.33
1	24–29	845	89.63	45.58	4.42	433.20	18.76	43.08	61.49	83.08	109.77	140.69	257.16
1	30–35	750	97.06	40.74	13.22	348.61	28.76	55.32	70.60	91.51	115.87	143.77	238.94
1	36–65	896	104.50	38.14	34.49	324.43	43.70	63.57	77.85	97.84	123.52	156.57	214.46
A	0–20	28	75.11	33.20	25.98	156.08	25.98	40.48	47.66	70.24	94.40	127.56	156.08
A	21–24	37	72.50	27.50	23.49	136.76	23.49	31.35	50.33	71.65	95.41	105.87	136.76
A	25–28	32	69.46	27.10	18.04	144.72	18.04	41.37	51.90	68.76	80.08	108.58	144.72
A	29–63	40	83.26	30.38	42.67	183.98	42.67	48.89	60.20	76.77	105.89	120.40	183.98

Table 7.E.6 Total Testing Time (in Minutes) at Each Raw Score Interval—Grade Eight

Form	Raw Score Interval	N	Mean	Standard Deviation	Minimum	Maximum	% Pt. 1	% Pt. 10	% Pt. 25	% Pt. 50	% Pt. 75	% Pt. 90	% Pt. 99
1	0–25	540	79.48	44.12	2.07	339.56	7.59	30.48	46.37	71.39	103.32	137.39	210.26
1	26–31	656	92.57	44.24	8.16	290.76	21.77	45.96	60.23	84.46	117.28	148.23	245.19
1	32–38	688	103.96	46.15	26.67	555.94	34.58	58.26	72.13	98.45	123.88	156.95	237.44
1	39–66	705	105.03	37.73	31.24	230.64	43.06	62.74	78.54	98.42	124.45	163.19	211.13
A	0–14	17	80.96	32.26	18.27	133.18	18.27	39.23	62.60	76.33	105.45	124.83	133.18
A	15–19	22	81.45	35.69	27.87	151.46	27.87	39.24	55.88	76.08	108.14	123.86	151.46
A	20–23	23	98.09	48.70	32.61	194.07	32.61	49.11	56.32	74.66	132.72	172.97	194.07
A	24–58	21	120.54	65.35	41.93	291.09	41.93	53.03	73.83	109.76	135.94	171.58	291.09

Table 7.E.7 Total Testing Time (in Minutes) at Each Raw Score Interval—Grade Nine

Form	Raw Score Interval	N	Mean	Standard Deviation	Minimum	Maximum	% Pt. 1	% Pt. 10	% Pt. 25	% Pt. 50	% Pt. 75	% Pt. 90	% Pt. 99
1	0–23	380	63.21	29.54	1.73	191.12	9.11	29.21	43.10	57.51	80.96	105.02	144.89
1	24–28	386	76.93	29.86	11.00	181.10	24.37	41.78	53.79	73.86	97.52	114.91	170.79
1	29–34	375	87.10	30.48	29.49	250.01	36.57	52.41	65.86	83.65	105.11	124.33	184.83
1	35–64	410	88.38	29.62	32.10	251.00	43.29	55.76	67.89	83.90	103.19	128.88	180.55
A	0–19	1	20.28	N/A	20.28	20.28	20.28	20.28	20.28	20.28	20.28	20.28	20.28
A	20–23	1	59.03	N/A	59.03	59.03	59.03	59.03	59.03	59.03	59.03	59.03	59.03
A	24–26	1	58.19	N/A	58.19	58.19	58.19	58.19	58.19	58.19	58.19	58.19	58.19
A	27–62	1	76.00	N/A	76.00	76.00	76.00	76.00	76.00	76.00	76.00	76.00	76.00

Table 7.E.8 Total Testing Time (in Minutes) at Each Raw Score Interval—Grade Ten

Form	Raw Score Interval	N	Mean	Standard Deviation	Minimum	Maximum	% Pt. 1	% Pt. 10	% Pt. 25	% Pt. 50	% Pt. 75	% Pt. 90	% Pt. 99
1	0–24	251	54.20	28.98	5.76	164.28	6.98	25.82	35.98	48.17	65.28	94.79	141.11
1	25–30	230	72.69	27.86	9.35	192.82	27.30	41.11	52.49	70.49	88.49	105.47	161.41
1	31–37	257	83.05	27.53	31.53	166.63	37.55	50.69	64.79	78.77	99.28	124.43	152.31
1	38–64	270	85.94	30.07	29.12	181.50	38.97	53.91	63.43	77.95	101.07	132.48	170.22
A	N/A	0	N/A	N/A	N/A	N/A	N/A	N/A	N/A	N/A	N/A	N/A	N/A
A	N/A	0	N/A	N/A	N/A	N/A	N/A	N/A	N/A	N/A	N/A	N/A	N/A
A	N/A	0	N/A	N/A	N/A	N/A	N/A	N/A	N/A	N/A	N/A	N/A	N/A
A	34–62	1	92.66	N/A	92.66	92.66	92.66	92.66	92.66	92.66	92.66	92.66	92.66

Table 7.E.9 Total Testing Time (in Minutes) at Each Raw Score Interval—Grade Eleven

Form	Raw Score Interval	N	Mean	Standard Deviation	Minimum	Maximum	% Pt. 1	% Pt. 10	% Pt. 25	% Pt. 50	% Pt. 75	% Pt. 90	% Pt. 99
1	0–23	215	53.20	31.41	3.43	244.46	7.00	19.08	34.07	50.03	67.18	87.69	165.20
1	24–30	258	67.55	29.85	6.59	185.85	14.49	36.48	47.13	63.70	81.01	105.80	182.37
1	31–37	245	76.33	31.64	14.13	253.19	29.25	45.47	54.28	70.46	94.13	116.83	186.23
1	38–64	254	83.11	26.42	37.57	182.87	43.07	52.85	63.16	80.04	97.82	118.48	170.93
A	0–17	2	64.73	35.84	39.39	90.07	39.39	39.39	39.39	64.73	90.07	90.07	90.07
A	18–23	3	43.46	3.70	41.05	47.72	41.05	41.05	41.05	41.61	47.72	47.72	47.72
A	24–27	2	43.94	2.65	42.06	45.81	42.06	42.06	42.06	43.94	45.81	45.81	45.81
A	28–62	3	103.38	49.64	57.35	155.99	57.35	57.35	57.35	96.79	155.99	155.99	155.99

Table 7.E.10 Total Testing Time (in Minutes) at Each Raw Score Interval—Grade Twelve

Form	Raw Score Interval	N	Mean	Standard Deviation	Minimum	Maximum	% Pt. 1	% Pt. 10	% Pt. 25	% Pt. 50	% Pt. 75	% Pt. 90	% Pt. 99
1	0–24	82	44.98	24.16	3.87	118.45	3.87	17.57	26.96	43.02	60.41	76.31	118.45
1	25–30	91	55.24	23.02	7.31	146.30	7.31	24.80	42.16	54.68	66.30	83.21	146.30
1	31–38	99	74.36	27.98	29.27	187.13	29.27	43.08	54.12	71.47	84.95	107.68	187.13
1	39–64	104	88.85	40.34	35.42	228.11	40.96	48.56	60.34	78.02	106.61	139.62	220.05
A	N/A	0	N/A	N/A	N/A	N/A	N/A	N/A	N/A	N/A	N/A	N/A	N/A
A	N/A	0	N/A	N/A	N/A	N/A	N/A	N/A	N/A	N/A	N/A	N/A	N/A
A	N/A	0	N/A	N/A	N/A	N/A	N/A	N/A	N/A	N/A	N/A	N/A	N/A
A	N/A	0	N/A	N/A	N/A	N/A	N/A	N/A	N/A	N/A	N/A	N/A	N/A

Table 7.E.11 Total Testing Time (in Minutes) at Each Raw Score Interval—High School, All Grades

Form	Raw Score Interval	N	Mean	Standard Deviation	Minimum	Maximum	% Pt. 1	% Pt. 10	% Pt. 25	% Pt. 50	% Pt. 75	% Pt. 90	% Pt. 99
1	0–23	880	56.78	30.07	1.73	244.46	6.98	23.15	37.34	51.76	71.55	98.14	141.51
1	24–29	998	71.80	30.71	6.59	250.01	15.97	38.53	50.01	66.40	89.31	111.76	171.18
1	30–36	1,014	81.44	29.46	14.13	253.19	31.53	48.00	62.03	77.04	96.38	120.35	177.93
1	37–64	1,015	85.97	30.27	29.12	228.11	39.20	52.44	63.65	79.84	101.29	129.08	181.20
A	0–17	3	49.91	36.07	20.28	90.07	20.28	20.28	20.28	39.39	90.07	90.07	90.07
A	18–23	4	47.35	8.35	41.05	59.03	41.05	41.05	41.33	44.67	53.37	59.03	59.03
A	24–27	3	48.69	8.44	42.06	58.19	42.06	42.06	42.06	45.81	58.19	58.19	58.19
A	28–62	5	95.76	37.09	57.35	155.99	57.35	57.35	76.00	92.66	96.79	155.99	155.99

Appendix 7.F: Reliability Analyses

Notes:

- The reliabilities are reported only for samples that comprise 11 or more examinees.
- In some cases in appendix 7.F, score reliabilities were not estimable and are presented in the tables as “N/A.”
- Results based on samples that contain 50 or fewer examinees should be interpreted with caution due to small sample sizes.

Table 7.F.1 Reliabilities and SEMs by Gender

Grade Level	Form	Male N	Male Reliability	Male SEM	Female N	Female Reliability	Female SEM
Grade 3	1	4,249	0.84	3.56	4,646	0.85	3.56
Grade 3	A	187	0.74	3.40	161	0.81	3.39
Grade 4	1	3,821	0.86	3.52	3,960	0.86	3.51
Grade 4	A	219	0.83	3.41	173	0.81	3.45
Grade 5	1	3,085	0.83	3.57	3,392	0.84	3.60
Grade 5	A	205	0.75	3.48	186	0.81	3.45
Grade 6	1	2,208	0.83	3.61	2,373	0.83	3.60
Grade 6	A	101	0.78	3.48	110	0.76	3.56
Grade 7	1	1,513	0.78	3.67	1,750	0.82	3.65
Grade 7	A	60	0.59	3.62	77	0.75	3.31
Grade 8	1	1,188	0.81	3.68	1,401	0.83	3.61
Grade 8	A	50	0.64	3.28	33	0.75	3.52
High school	1	1,839	0.80	3.67	2,068	0.81	3.67
High school	A	10	N/A	N/A	5	N/A	N/A

Table 7.F.2 Reliabilities and SEMs by Economic Status

Grade Level	Form	Not Disadvantaged N	Not Disadvantaged Reliability	Not Disadvantaged SEM	Disadvantaged N	Disadvantaged Reliability	Disadvantaged SEM
Grade 3	1	2,455	0.86	3.56	6,440	0.84	3.56
Grade 3	A	65	0.81	3.38	283	0.78	3.41
Grade 4	1	2,307	0.87	3.50	5,474	0.85	3.52
Grade 4	A	72	0.86	3.39	320	0.81	3.44
Grade 5	1	1,919	0.85	3.53	4,558	0.82	3.60
Grade 5	A	89	0.76	3.45	302	0.79	3.47
Grade 6	1	1,509	0.84	3.60	3,072	0.82	3.61
Grade 6	A	60	0.80	3.52	151	0.75	3.54
Grade 7	1	987	0.82	3.67	2,276	0.80	3.65
Grade 7	A	20	0.57	3.51	117	0.72	3.41
Grade 8	1	748	0.85	3.61	1,841	0.81	3.66
Grade 8	A	11	0.77	3.11	72	0.69	3.41
High school	1	952	0.84	3.63	2,955	0.80	3.68
High school	A	1	N/A	N/A	14	0.53	3.49

Table 7.F.3 Reliabilities and SEMs by Special Education Services

Grade Level	Form	No Special Services N	No Special Services Reliability	No Special Services SEM	Special Services N	Special Services Reliability	Special Services SEM
Grade 3	1	8,438	0.85	3.56	457	0.81	3.51
Grade 3	A	227	0.81	3.40	121	0.46	3.36
Grade 4	1	7,381	0.86	3.52	400	0.82	3.51
Grade 4	A	279	0.84	3.43	113	0.61	3.39
Grade 5	1	6,142	0.84	3.58	335	0.78	3.56
Grade 5	A	289	0.78	3.46	102	0.65	3.41
Grade 6	1	4,366	0.83	3.60	215	0.79	3.66
Grade 6	A	147	0.78	3.49	64	0.45	3.53
Grade 7	1	3,160	0.81	3.66	103	0.69	3.73
Grade 7	A	91	0.71	3.45	46	0.58	3.44
Grade 8	1	2,498	0.82	3.64	91	0.72	3.87
Grade 8	A	45	0.75	3.32	38	0.55	3.50
High school	1	3,796	0.81	3.67	111	0.66	3.70
High school	A	3	N/A	N/A	12	0.31	3.41

Table 7.F.4 Reliabilities and SEMs by Attendance in U.S. Schools

Grade Level	Form	Less Than 12 Months N	Less Than 12 Months Reliability	Less Than 12 Months SEM	12 Months or More N	12 Months or More Reliability	12 Months or More SEM
Grade 3	1	356	0.82	3.55	8,539	0.85	3.56
Grade 3	A	19	0.77	3.25	329	0.79	3.41
Grade 4	1	381	0.82	3.50	7,400	0.86	3.52
Grade 4	A	18	0.49	3.25	374	0.83	3.44
Grade 5	1	314	0.81	3.51	6,163	0.84	3.58
Grade 5	A	29	0.73	3.35	362	0.79	3.47
Grade 6	1	327	0.81	3.58	4,254	0.83	3.60
Grade 6	A	4	N/A	N/A	207	0.76	3.54
Grade 7	1	359	0.75	3.54	2,904	0.81	3.67
Grade 7	A	4	N/A	N/A	133	0.69	3.44
Grade 8	1	287	0.80	3.56	2,302	0.82	3.65
Grade 8	A	8	N/A	N/A	75	0.61	3.41
High school	1	997	0.78	3.60	2,910	0.82	3.68
High school	A	2	N/A	N/A	13	0.73	3.42

Table 7.F.5 Reliabilities and SEMs by Spanish Instruction Status

Grade Level	Form	Received Instruction in Spanish N	Received Instruction in Spanish Reliability	Received Instruction in Spanish SEM	Not Received Instruction in Spanish N	Not Received Instruction in Spanish Reliability	Not Received Instruction in Spanish SEM
Grade 3	1	8,374	0.85	3.56	517	0.80	3.56
Grade 3	A	328	0.79	3.40	20	0.19	3.37
Grade 4	1	7,342	0.86	3.52	439	0.82	3.49
Grade 4	A	373	0.82	3.43	19	0.86	3.29
Grade 5	1	6,152	0.84	3.58	324	0.75	3.61
Grade 5	A	373	0.79	3.47	17	0.61	3.41
Grade 6	1	4,229	0.83	3.60	352	0.82	3.65
Grade 6	A	201	0.77	3.53	10	N/A	N/A
Grade 7	1	2,951	0.81	3.66	312	0.78	3.65
Grade 7	A	131	0.70	3.43	6	N/A	N/A
Grade 8	1	2,385	0.83	3.63	189	0.77	3.79
Grade 8	A	59	0.67	3.40	24	0.76	3.34
High school	1	3,096	0.81	3.66	811	0.82	3.69
High school	A	12	0.76	3.41	3	N/A	N/A

Table 7.F.6 Reliabilities and SEMs by English Proficiency

Grade Level	Form	English Only N	English Only Reliability	English Only SEM	Initial Fluent English Proficient N	Initial Fluent English Proficient Reliability	Initial Fluent English Proficient SEM
Grade 3	1	2,991	0.85	3.56	423	0.86	3.52
Grade 3	A	76	0.70	3.36	3	N/A	N/A
Grade 4	1	2,489	0.87	3.52	415	0.87	3.52
Grade 4	A	92	0.85	3.37	1	N/A	N/A
Grade 5	1	2,131	0.84	3.55	290	0.85	3.63
Grade 5	A	84	0.79	3.43	5	N/A	N/A
Grade 6	1	1,380	0.84	3.59	240	0.85	3.56
Grade 6	A	64	0.78	3.53	6	N/A	N/A
Grade 7	1	887	0.81	3.66	160	0.83	3.57
Grade 7	A	20	0.58	3.47	1	N/A	N/A
Grade 8	1	641	0.84	3.63	101	0.82	3.54
Grade 8	A	12	0.50	3.14	0	N/A	N/A
High school	1	598	0.83	3.62	115	0.85	3.65
High school	A	0	N/A	N/A	0	N/A	N/A

Table 7.F.7 Reliabilities and SEMs by English Proficiency (Continued)

Grade Level	Form	English Learner N	English Learner Reliability	English Learner SEM	Reclassified Fluent English Proficient N	Reclassified Fluent English Proficient Reliability	Reclassified Fluent English Proficient SEM
Grade 3	1	3,638	0.81	3.56	1,830	0.84	3.56
Grade 3	A	235	0.76	3.40	33	0.83	3.35
Grade 4	1	3,114	0.81	3.51	1,744	0.86	3.54
Grade 4	A	258	0.79	3.44	40	0.84	3.37
Grade 5	1	2,070	0.75	3.55	1,974	0.83	3.67
Grade 5	A	216	0.71	3.45	84	0.78	3.55
Grade 6	1	1,250	0.78	3.64	1,700	0.80	3.58
Grade 6	A	70	0.73	3.51	71	0.77	3.48
Grade 7	1	916	0.72	3.63	1,284	0.80	3.65
Grade 7	A	59	0.70	3.45	57	0.74	3.32
Grade 8	1	624	0.75	3.67	1,216	0.81	3.63
Grade 8	A	52	0.73	3.29	17	0.55	4.31
High school	1	1,435	0.78	3.64	1,738	0.80	3.69
High school	A	8	N/A	N/A	7	N/A	N/A

Table 7.F.8 Scale Score Conversion Table with CSEMs of the Regular Form for Grade Three

Raw Score	Theta Score	Theta SEM	Scale Score	SS CSEM
0	-6.000	1.5000	300	20
1	-4.438	1.0201	300	14
2	-3.704	0.7351	300	10
3	-3.258	0.6105	304	8
4	-2.931	0.5371	308	7
5	-2.670	0.4877	312	7
6	-2.450	0.4515	315	6
7	-2.259	0.4236	317	6
8	-2.089	0.4013	320	5
9	-1.935	0.3831	322	5
10	-1.794	0.3679	324	5
11	-1.663	0.3550	326	5
12	-1.541	0.3439	327	5
13	-1.426	0.3344	329	5
14	-1.317	0.3260	330	4
15	-1.213	0.3187	332	4
16	-1.114	0.3123	333	4
17	-1.018	0.3065	334	4
18	-0.925	0.3014	336	4
19	-0.836	0.2970	337	4
20	-0.749	0.2930	338	4
21	-0.664	0.2894	339	4
22	-0.581	0.2863	340	4
23	-0.500	0.2835	341	4
24	-0.420	0.2811	343	4
25	-0.342	0.2790	344	4
26	-0.264	0.2771	345	4
27	-0.188	0.2756	346	4
28	-0.112	0.2743	347	4
29	-0.037	0.2732	348	4
30	0.037	0.2724	349	4
31	0.111	0.2718	350	4
32	0.185	0.2715	351	4
33	0.259	0.2713	352	4
34	0.333	0.2715	353	4
35	0.407	0.2718	354	4
36	0.481	0.2724	355	4
37	0.555	0.2733	356	4
38	0.630	0.2744	357	4

Table 7.F.8 (continuation)

Raw Score	Theta Score	Theta SEM	Scale Score	SS CSEM
39	0.706	0.2758	358	4
40	0.782	0.2776	359	4
41	0.860	0.2797	360	4
42	0.939	0.2821	361	4
43	1.020	0.2851	362	4
44	1.102	0.2884	363	4
45	1.186	0.2923	364	4
46	1.273	0.2967	366	4
47	1.363	0.3019	367	4
48	1.455	0.3077	368	4
49	1.552	0.3145	369	4
50	1.654	0.3224	371	4
51	1.761	0.3314	372	5
52	1.874	0.3420	374	5
53	1.995	0.3544	376	5
54	2.126	0.3692	377	5
55	2.269	0.3871	379	5
56	2.427	0.4091	381	6
57	2.606	0.4369	384	6
58	2.812	0.4731	387	6
59	3.060	0.5231	390	7
60	3.371	0.5971	394	8
61	3.800	0.7231	399	10
62	4.516	1.0110	399	14
63	6.000	1.5000	399	20

Table 7.F.9 Scale Score Conversion Table with CSEMs of the Accommodated Form for Grade Three

Raw Score	Theta Score	Theta SEM	Scale Score	SS CSEM
0	-6.000	1.5000	300	20
1	-4.189	1.0172	300	14
2	-3.460	0.7313	301	10
3	-3.020	0.6069	307	8
4	-2.697	0.5337	311	7
5	-2.439	0.4845	315	7
6	-2.222	0.4487	318	6
7	-2.033	0.4212	320	6
8	-1.865	0.3993	323	5
9	-1.712	0.3814	325	5
10	-1.572	0.3666	327	5
11	-1.443	0.3541	329	5
12	-1.321	0.3433	330	5
13	-1.206	0.3340	332	5
14	-1.097	0.3260	333	4
15	-0.993	0.3189	335	4
16	-0.893	0.3128	336	4
17	-0.797	0.3073	337	4
18	-0.704	0.3026	339	4
19	-0.614	0.2984	340	4
20	-0.526	0.2947	341	4
21	-0.440	0.2914	342	4
22	-0.356	0.2886	343	4
23	-0.273	0.2862	345	4
24	-0.192	0.2841	346	4
25	-0.112	0.2824	347	4
26	-0.032	0.2809	348	4
27	0.046	0.2798	349	4
28	0.125	0.2790	350	4
29	0.202	0.2784	351	4
30	0.280	0.2781	352	4
31	0.357	0.2781	353	4
32	0.435	0.2784	354	4
33	0.512	0.2789	355	4
34	0.590	0.2798	356	4
35	0.669	0.2809	357	4
36	0.748	0.2823	358	4
37	0.829	0.2841	360	4
38	0.910	0.2862	361	4

Table 7.F.9 (continuation)

Raw Score	Theta Score	Theta SEM	Scale Score	SS CSEM
39	0.993	0.2887	362	4
40	1.077	0.2916	363	4
41	1.163	0.2949	364	4
42	1.251	0.2988	365	4
43	1.342	0.3032	367	4
44	1.435	0.3083	368	4
45	1.532	0.3141	369	4
46	1.633	0.3208	371	4
47	1.738	0.3284	372	4
48	1.849	0.3373	374	5
49	1.967	0.3477	375	5
50	2.092	0.3599	377	5
51	2.227	0.3745	379	5
52	2.373	0.3920	381	5
53	2.535	0.4136	383	6
54	2.718	0.4411	385	6
55	2.928	0.4769	388	7
56	3.179	0.5264	392	7
57	3.493	0.5999	396	8
58	3.925	0.7251	399	10
59	4.645	1.0125	399	14
60	6.000	1.5000	399	20

Table 7.F.10 Scale Score Conversion Table with CSEMs of the Regular Form for Grade Four

Raw Score	Theta Score	Theta SEM	Scale Score	SS CSEM
0	-6.000	1.5000	400	19
1	-5.002	1.0315	400	13
2	-4.245	0.7498	400	9
3	-3.778	0.6275	401	8
4	-3.430	0.5553	405	7
5	-3.149	0.5065	409	6
6	-2.911	0.4707	412	6
7	-2.703	0.4430	415	6
8	-2.516	0.4206	417	5
9	-2.347	0.4022	419	5
10	-2.192	0.3867	421	5
11	-2.047	0.3734	423	5
12	-1.912	0.3619	424	5
13	-1.785	0.3519	426	4
14	-1.664	0.3430	428	4
15	-1.549	0.3351	429	4
16	-1.439	0.3281	430	4
17	-1.333	0.3218	432	4
18	-1.232	0.3162	433	4
19	-1.133	0.3111	434	4
20	-1.038	0.3065	435	4
21	-0.945	0.3024	437	4
22	-0.855	0.2987	438	4
23	-0.766	0.2954	439	4
24	-0.680	0.2924	440	4
25	-0.595	0.2897	441	4
26	-0.512	0.2874	442	4
27	-0.430	0.2853	443	4
28	-0.349	0.2836	444	4
29	-0.269	0.2821	445	4
30	-0.190	0.2808	446	4
31	-0.111	0.2798	447	4
32	-0.033	0.2791	448	3
33	0.045	0.2786	449	3
34	0.123	0.2784	450	3
35	0.200	0.2784	451	3
36	0.278	0.2787	452	3
37	0.356	0.2792	453	3
38	0.434	0.2801	454	4

Table 7.F.10 (continuation)

Raw Score	Theta Score	Theta SEM	Scale Score	SS CSEM
39	0.513	0.2812	455	4
40	0.592	0.2827	456	4
41	0.673	0.2845	457	4
42	0.754	0.2866	458	4
43	0.837	0.2891	459	4
44	0.922	0.2921	460	4
45	1.008	0.2955	461	4
46	1.097	0.2995	462	4
47	1.188	0.3040	463	4
48	1.282	0.3091	465	4
49	1.379	0.3150	466	4
50	1.480	0.3217	467	4
51	1.586	0.3295	468	4
52	1.698	0.3385	470	4
53	1.816	0.3490	471	4
54	1.942	0.3612	473	5
55	2.078	0.3759	474	5
56	2.226	0.3935	476	5
57	2.389	0.4152	478	5
58	2.573	0.4426	481	6
59	2.785	0.4786	483	6
60	3.037	0.5279	487	7
61	3.353	0.6013	490	8
62	3.787	0.7265	496	9
63	4.509	1.0136	499	13
64	6.000	1.5000	499	19

Table 7.F.11 Scale Score Conversion Table with CSEMs of the Accommodated Form for Grade Four

Raw Score	Theta Score	Theta SEM	Scale Score	SS CSEM
0	-6.000	1.5000	400	19
1	-4.591	1.0218	400	13
2	-3.853	0.7378	400	9
3	-3.403	0.6140	406	8
4	-3.072	0.5413	410	7
5	-2.806	0.4923	413	6
6	-2.581	0.4565	416	6
7	-2.386	0.4292	419	5
8	-2.211	0.4072	421	5
9	-2.052	0.3892	423	5
10	-1.907	0.3743	425	5
11	-1.771	0.3616	426	5
12	-1.644	0.3507	428	4
13	-1.525	0.3413	429	4
14	-1.411	0.3330	431	4
15	-1.302	0.3257	432	4
16	-1.198	0.3193	433	4
17	-1.098	0.3137	435	4
18	-1.001	0.3087	436	4
19	-0.907	0.3042	437	4
20	-0.816	0.3003	438	4
21	-0.727	0.2968	439	4
22	-0.639	0.2938	440	4
23	-0.554	0.2911	442	4
24	-0.470	0.2888	443	4
25	-0.387	0.2869	444	4
26	-0.305	0.2852	445	4
27	-0.224	0.2839	446	4
28	-0.144	0.2828	447	4
29	-0.064	0.2821	448	4
30	0.016	0.2816	449	4
31	0.095	0.2814	450	4
32	0.174	0.2815	451	4
33	0.254	0.2819	452	4
34	0.333	0.2825	453	4
35	0.413	0.2834	454	4
36	0.494	0.2847	455	4
37	0.576	0.2863	456	4
38	0.658	0.2882	457	4

Table 7.F.11 (*continuation*)

Raw Score	Theta Score	Theta SEM	Scale Score	SS CSEM
39	0.742	0.2904	458	4
40	0.827	0.2931	459	4
41	0.914	0.2962	460	4
42	1.003	0.2997	461	4
43	1.094	0.3038	462	4
44	1.188	0.3084	463	4
45	1.285	0.3137	465	4
46	1.385	0.3198	466	4
47	1.489	0.3266	467	4
48	1.599	0.3346	468	4
49	1.714	0.3437	470	4
50	1.836	0.3544	471	4
51	1.966	0.3668	473	5
52	2.106	0.3816	475	5
53	2.258	0.3993	477	5
54	2.426	0.4211	479	5
55	2.615	0.4486	481	6
56	2.832	0.4845	484	6
57	3.090	0.5337	487	7
58	3.413	0.6070	491	8
59	3.854	0.7317	497	9
60	4.583	1.0174	499	13
61	6.000	1.5000	499	19

Table 7.F.12 Scale Score Conversion Table with CSEMs of the Regular Form for Grade Five

Raw Score	Theta Score	Theta SEM	Scale Score	SS CSEM
0	-6.000	1.5000	500	21
1	-4.402	1.0265	500	14
2	-3.657	0.7413	500	10
3	-3.203	0.6156	504	8
4	-2.871	0.5412	508	7
5	-2.606	0.4907	512	7
6	-2.384	0.4537	515	6
7	-2.191	0.4251	518	6
8	-2.020	0.4024	520	6
9	-1.865	0.3837	522	5
10	-1.724	0.3683	524	5
11	-1.593	0.3552	526	5
12	-1.471	0.3441	528	5
13	-1.356	0.3344	529	5
14	-1.247	0.3260	531	4
15	-1.143	0.3187	532	4
16	-1.043	0.3122	533	4
17	-0.947	0.3065	535	4
18	-0.855	0.3016	536	4
19	-0.765	0.2971	537	4
20	-0.678	0.2933	538	4
21	-0.593	0.2899	540	4
22	-0.510	0.2869	541	4
23	-0.428	0.2843	542	4
24	-0.348	0.2820	543	4
25	-0.269	0.2801	544	4
26	-0.191	0.2785	545	4
27	-0.114	0.2772	546	4
28	-0.037	0.2762	547	4
29	0.039	0.2754	548	4
30	0.115	0.2749	549	4
31	0.190	0.2747	550	4
32	0.266	0.2747	551	4
33	0.341	0.2750	553	4
34	0.417	0.2755	554	4
35	0.493	0.2764	555	4
36	0.570	0.2775	556	4
37	0.648	0.2788	557	4
38	0.726	0.2805	558	4

Table 7.F.12 (continuation)

Raw Score	Theta Score	Theta SEM	Scale Score	SS CSEM
39	0.805	0.2825	559	4
40	0.886	0.2849	560	4
41	0.968	0.2876	561	4
42	1.051	0.2907	562	4
43	1.137	0.2943	563	4
44	1.225	0.2984	565	4
45	1.315	0.3030	566	4
46	1.409	0.3083	567	4
47	1.505	0.3142	569	4
48	1.606	0.3211	570	4
49	1.712	0.3290	571	5
50	1.823	0.3380	573	5
51	1.941	0.3486	575	5
52	2.067	0.3610	576	5
53	2.203	0.3757	578	5
54	2.351	0.3934	580	5
55	2.514	0.4152	582	6
56	2.698	0.4427	585	6
57	2.909	0.4785	588	7
58	3.161	0.5279	591	7
59	3.478	0.6016	596	8
60	3.912	0.7267	599	10
61	4.634	1.0137	599	14
62	6.000	1.5000	599	21

Table 7.F.13 Scale Score Conversion Table with CSEMs of the Accommodated Form for Grade Five

Raw Score	Theta Score	Theta SEM	Scale Score	SS CSEM
0	-6.000	1.5000	500	21
1	-4.550	1.0248	500	14
2	-3.807	0.7400	500	10
3	-3.355	0.6156	502	8
4	-3.022	0.5421	506	7
5	-2.756	0.4926	510	7
6	-2.531	0.4563	513	6
7	-2.336	0.4285	516	6
8	-2.161	0.4063	518	6
9	-2.004	0.3883	520	5
10	-1.859	0.3733	522	5
11	-1.724	0.3605	524	5
12	-1.598	0.3497	526	5
13	-1.479	0.3403	527	5
14	-1.366	0.3322	529	5
15	-1.258	0.3250	531	4
16	-1.154	0.3187	532	4
17	-1.054	0.3132	533	4
18	-0.958	0.3083	535	4
19	-0.864	0.3040	536	4
20	-0.773	0.3002	537	4
21	-0.684	0.2968	538	4
22	-0.596	0.2938	540	4
23	-0.511	0.2912	541	4
24	-0.426	0.2889	542	4
25	-0.343	0.2870	543	4
26	-0.262	0.2854	544	4
27	-0.180	0.2840	545	4
28	-0.100	0.2829	546	4
29	-0.020	0.2821	548	4
30	0.059	0.2815	549	4
31	0.139	0.2812	550	4
32	0.218	0.2811	551	4
33	0.297	0.2813	552	4
34	0.376	0.2817	553	4
35	0.456	0.2823	554	4
36	0.536	0.2832	555	4
37	0.616	0.2844	556	4
38	0.698	0.2859	557	4

Table 7.F.13 (continuation)

Raw Score	Theta Score	Theta SEM	Scale Score	SS CSEM
39	0.780	0.2876	559	4
40	0.863	0.2897	560	4
41	0.948	0.2921	561	4
42	1.034	0.2949	562	4
43	1.122	0.2980	563	4
44	1.212	0.3016	564	4
45	1.304	0.3057	566	4
46	1.399	0.3104	567	4
47	1.497	0.3157	568	4
48	1.599	0.3217	570	4
49	1.705	0.3286	571	5
50	1.815	0.3364	573	5
51	1.931	0.3454	574	5
52	2.054	0.3559	576	5
53	2.185	0.3682	578	5
54	2.326	0.3827	580	5
55	2.480	0.4004	582	6
56	2.649	0.4220	584	6
57	2.838	0.4491	587	6
58	3.055	0.4846	590	7
59	3.314	0.5338	593	7
60	3.636	0.6066	598	8
61	4.077	0.7312	599	10
62	4.805	1.0169	599	14
63	6.000	1.5000	599	21

Table 7.F.14 Scale Score Conversion Table with CSEMs of the Regular Form for Grade Six

Raw Score	Theta Score	Theta SEM	Scale Score	SS CSEM
0	-6.000	1.5000	600	22
1	-4.806	1.0279	600	15
2	-4.058	0.7426	600	11
3	-3.603	0.6172	600	9
4	-3.269	0.5428	603	8
5	-3.002	0.4922	606	7
6	-2.778	0.4551	610	7
7	-2.584	0.4266	613	6
8	-2.412	0.4039	615	6
9	-2.256	0.3852	617	6
10	-2.114	0.3698	619	5
11	-1.982	0.3566	621	5
12	-1.859	0.3454	623	5
13	-1.743	0.3356	625	5
14	-1.633	0.3271	626	5
15	-1.528	0.3196	628	5
16	-1.428	0.3131	629	5
17	-1.332	0.3073	631	4
18	-1.239	0.3021	632	4
19	-1.149	0.2975	633	4
20	-1.062	0.2934	634	4
21	-0.977	0.2898	636	4
22	-0.894	0.2865	637	4
23	-0.812	0.2836	638	4
24	-0.733	0.2812	639	4
25	-0.654	0.2789	640	4
26	-0.577	0.2770	642	4
27	-0.500	0.2754	643	4
28	-0.425	0.2741	644	4
29	-0.350	0.2730	645	4
30	-0.276	0.2721	646	4
31	-0.202	0.2715	647	4
32	-0.128	0.2711	648	4
33	-0.055	0.2710	649	4
34	0.019	0.2711	650	4
35	0.093	0.2714	651	4
36	0.166	0.2720	652	4
37	0.241	0.2728	653	4
38	0.315	0.2739	654	4

Table 7.F.14 (continuation)

Raw Score	Theta Score	Theta SEM	Scale Score	SS CSEM
39	0.391	0.2753	655	4
40	0.467	0.2769	657	4
41	0.544	0.2788	658	4
42	0.623	0.2811	659	4
43	0.703	0.2837	660	4
44	0.784	0.2866	661	4
45	0.867	0.2899	662	4
46	0.952	0.2937	664	4
47	1.040	0.2980	665	4
48	1.130	0.3028	666	4
49	1.224	0.3084	668	4
50	1.321	0.3146	669	5
51	1.422	0.3216	670	5
52	1.528	0.3297	672	5
53	1.640	0.3389	674	5
54	1.758	0.3496	675	5
55	1.885	0.3622	677	5
56	2.021	0.3769	679	5
57	2.170	0.3948	681	6
58	2.335	0.4167	684	6
59	2.520	0.4442	686	6
60	2.733	0.4802	689	7
61	2.986	0.5294	693	8
62	3.305	0.6031	698	9
63	3.741	0.7281	699	11
64	4.464	1.0144	699	15
65	6.000	1.5000	699	22

Table 7.F.15 Scale Score Conversion Table with CSEMs of the Accommodated Form for Grade Six

Raw Score	Theta Score	Theta SEM	Scale Score	SS CSEM
0	-6.000	1.5000	600	22
1	-4.829	1.0319	600	15
2	-4.073	0.7484	600	11
3	-3.609	0.6234	600	9
4	-3.268	0.5490	603	8
5	-2.995	0.4980	607	7
6	-2.766	0.4602	610	7
7	-2.568	0.4309	613	6
8	-2.392	0.4074	615	6
9	-2.234	0.3881	618	6
10	-2.090	0.3720	620	5
11	-1.957	0.3583	622	5
12	-1.832	0.3466	623	5
13	-1.716	0.3366	625	5
14	-1.605	0.3279	627	5
15	-1.500	0.3203	628	5
16	-1.400	0.3138	630	5
17	-1.303	0.3079	631	4
18	-1.210	0.3029	632	4
19	-1.119	0.2984	634	4
20	-1.031	0.2944	635	4
21	-0.945	0.2910	636	4
22	-0.862	0.2880	637	4
23	-0.779	0.2853	639	4
24	-0.699	0.2831	640	4
25	-0.619	0.2811	641	4
26	-0.540	0.2794	642	4
27	-0.463	0.2780	643	4
28	-0.386	0.2769	644	4
29	-0.309	0.2760	645	4
30	-0.233	0.2754	646	4
31	-0.157	0.2750	648	4
32	-0.082	0.2749	649	4
33	-0.006	0.2750	650	4
34	0.070	0.2753	651	4
35	0.146	0.2758	652	4
36	0.222	0.2767	653	4
37	0.299	0.2777	654	4
38	0.376	0.2790	655	4

Table 7.F.15 (continuation)

Raw Score	Theta Score	Theta SEM	Scale Score	SS CSEM
39	0.455	0.2807	656	4
40	0.534	0.2826	658	4
41	0.615	0.2848	659	4
42	0.697	0.2874	660	4
43	0.780	0.2903	661	4
44	0.865	0.2936	662	4
45	0.953	0.2975	664	4
46	1.043	0.3018	665	4
47	1.135	0.3067	666	4
48	1.231	0.3122	668	5
49	1.330	0.3185	669	5
50	1.434	0.3257	671	5
51	1.543	0.3339	672	5
52	1.658	0.3434	674	5
53	1.779	0.3543	676	5
54	1.910	0.3672	677	5
55	2.050	0.3824	679	6
56	2.203	0.4007	682	6
57	2.373	0.4233	684	6
58	2.564	0.4516	687	7
59	2.784	0.4883	690	7
60	3.047	0.5388	694	8
61	3.376	0.6131	699	9
62	3.826	0.7386	699	11
63	4.567	1.0242	699	15
64	6.000	1.5000	699	22

Table 7.F.16 Scale Score Conversion Table with CSEMs of the Regular Form for Grade Seven

Raw Score	Theta Score	Theta SEM	Scale Score	SS CSEM
0	-6.000	1.5000	700	23
1	-4.561	1.0238	700	16
2	-3.819	0.7398	700	11
3	-3.367	0.6163	700	9
4	-3.033	0.5434	700	8
5	-2.765	0.4940	700	8
6	-2.539	0.4578	703	7
7	-2.342	0.4298	706	7
8	-2.167	0.4074	709	6
9	-2.009	0.3889	711	6
10	-1.863	0.3733	714	6
11	-1.729	0.3601	716	5
12	-1.603	0.3486	718	5
13	-1.485	0.3386	719	5
14	-1.374	0.3298	721	5
15	-1.267	0.3220	723	5
16	-1.166	0.3151	724	5
17	-1.068	0.3088	726	5
18	-0.975	0.3033	727	5
19	-0.884	0.2983	729	5
20	-0.796	0.2939	730	4
21	-0.711	0.2899	731	4
22	-0.628	0.2863	732	4
23	-0.547	0.2831	734	4
24	-0.468	0.2803	735	4
25	-0.390	0.2778	736	4
26	-0.313	0.2756	737	4
27	-0.238	0.2737	738	4
28	-0.163	0.2720	740	4
29	-0.090	0.2707	741	4
30	-0.017	0.2696	742	4
31	0.056	0.2688	743	4
32	0.128	0.2682	744	4
33	0.200	0.2678	745	4
34	0.272	0.2678	746	4
35	0.344	0.2679	747	4
36	0.415	0.2684	748	4
37	0.488	0.2691	749	4
38	0.560	0.2700	751	4

Table 7.F.16 (continuation)

Raw Score	Theta Score	Theta SEM	Scale Score	SS CSEM
39	0.634	0.2713	752	4
40	0.708	0.2728	753	4
41	0.783	0.2747	754	4
42	0.859	0.2769	755	4
43	0.936	0.2795	756	4
44	1.015	0.2824	758	4
45	1.096	0.2858	759	4
46	1.179	0.2897	760	4
47	1.264	0.2941	761	4
48	1.352	0.2991	763	5
49	1.443	0.3048	764	5
50	1.538	0.3113	765	5
51	1.638	0.3187	767	5
52	1.742	0.3272	769	5
53	1.852	0.3369	770	5
54	1.970	0.3482	772	5
55	2.095	0.3614	774	6
56	2.232	0.3771	776	6
57	2.381	0.3959	778	6
58	2.547	0.4189	781	6
59	2.734	0.4478	784	7
60	2.952	0.4854	787	7
61	3.212	0.5366	791	8
62	3.539	0.6118	796	9
63	3.988	0.7384	799	11
64	4.729	1.0249	799	16
65	6.000	1.5000	799	23

Table 7.F.17 Scale Score Conversion Table with CSEMs of the Accommodated Form for Grade Seven

Raw Score	Theta Score	Theta SEM	Scale Score	SS CSEM
0	-6.000	1.5000	700	23
1	-4.539	1.0249	700	16
2	-3.795	0.7413	700	11
3	-3.340	0.6178	700	9
4	-3.005	0.5453	700	8
5	-2.734	0.4961	700	8
6	-2.506	0.4603	704	7
7	-2.307	0.4326	707	7
8	-2.130	0.4106	710	6
9	-1.969	0.3924	712	6
10	-1.821	0.3772	714	6
11	-1.683	0.3641	716	6
12	-1.555	0.3530	718	5
13	-1.433	0.3432	720	5
14	-1.318	0.3347	722	5
15	-1.209	0.3272	724	5
16	-1.104	0.3205	725	5
17	-1.003	0.3145	727	5
18	-0.906	0.3092	728	5
19	-0.812	0.3045	730	5
20	-0.720	0.3002	731	5
21	-0.631	0.2964	732	5
22	-0.544	0.2930	734	4
23	-0.459	0.2900	735	4
24	-0.376	0.2873	736	4
25	-0.294	0.2850	738	4
26	-0.213	0.2830	739	4
27	-0.134	0.2813	740	4
28	-0.055	0.2799	741	4
29	0.023	0.2787	742	4
30	0.101	0.2778	744	4
31	0.178	0.2772	745	4
32	0.255	0.2768	746	4
33	0.331	0.2767	747	4
34	0.408	0.2769	748	4
35	0.485	0.2773	749	4
36	0.562	0.2781	751	4
37	0.639	0.2791	752	4
38	0.718	0.2804	753	4

Table 7.F.17 (continuation)

Raw Score	Theta Score	Theta SEM	Scale Score	SS CSEM
39	0.797	0.2821	754	4
40	0.877	0.2840	755	4
41	0.958	0.2864	757	4
42	1.041	0.2891	758	4
43	1.126	0.2923	759	4
44	1.212	0.2959	761	5
45	1.301	0.3001	762	5
46	1.393	0.3050	763	5
47	1.488	0.3104	765	5
48	1.586	0.3167	766	5
49	1.689	0.3238	768	5
50	1.796	0.3320	769	5
51	1.910	0.3415	771	5
52	2.030	0.3525	773	5
53	2.159	0.3655	775	6
54	2.298	0.3808	777	6
55	2.450	0.3992	779	6
56	2.618	0.4218	782	6
57	2.808	0.4502	785	7
58	3.027	0.4872	788	7
59	3.289	0.5378	792	8
60	3.617	0.6123	797	9
61	4.066	0.7380	799	11
62	4.807	1.0242	799	16
63	6.000	1.5000	799	23

Table 7.F.18 Scale Score Conversion Table with CSEMs of the Regular Form for Grade Eight

Raw Score	Theta Score	Theta SEM	Scale Score	SS CSEM
0	-6.000	1.5000	800	22
1	-4.823	1.0262	800	15
2	-4.077	0.7424	800	11
3	-3.621	0.6183	800	9
4	-3.285	0.5450	800	8
5	-3.016	0.4954	801	7
6	-2.789	0.4590	805	7
7	-2.591	0.4309	808	6
8	-2.415	0.4084	810	6
9	-2.256	0.3900	812	6
10	-2.110	0.3746	815	6
11	-1.974	0.3615	817	5
12	-1.847	0.3501	818	5
13	-1.728	0.3403	820	5
14	-1.615	0.3317	822	5
15	-1.508	0.3241	823	5
16	-1.405	0.3174	825	5
17	-1.306	0.3113	826	5
18	-1.211	0.3059	828	4
19	-1.119	0.3011	829	4
20	-1.029	0.2967	830	4
21	-0.942	0.2928	832	4
22	-0.857	0.2893	833	4
23	-0.775	0.2862	834	4
24	-0.693	0.2834	835	4
25	-0.614	0.2810	837	4
26	-0.535	0.2788	838	4
27	-0.458	0.2769	839	4
28	-0.382	0.2753	840	4
29	-0.306	0.2739	841	4
30	-0.232	0.2728	842	4
31	-0.157	0.2719	843	4
32	-0.084	0.2713	844	4
33	-0.010	0.2709	845	4
34	0.063	0.2707	847	4
35	0.137	0.2708	848	4
36	0.210	0.2711	849	4
37	0.284	0.2716	850	4
38	0.358	0.2724	851	4

Table 7.F.18 (continuation)

Raw Score	Theta Score	Theta SEM	Scale Score	SS CSEM
39	0.432	0.2734	852	4
40	0.508	0.2747	853	4
41	0.583	0.2763	854	4
42	0.660	0.2781	855	4
43	0.738	0.2803	856	4
44	0.818	0.2829	858	4
45	0.899	0.2858	859	4
46	0.981	0.2891	860	4
47	1.066	0.2929	861	4
48	1.153	0.2971	863	4
49	1.243	0.3020	864	4
50	1.336	0.3074	865	5
51	1.432	0.3136	867	5
52	1.533	0.3207	868	5
53	1.638	0.3288	870	5
54	1.750	0.3382	871	5
55	1.868	0.3490	873	5
56	1.994	0.3616	875	5
57	2.130	0.3766	877	6
58	2.278	0.3945	879	6
59	2.443	0.4167	881	6
60	2.628	0.4444	884	7
61	2.841	0.4806	887	7
62	3.096	0.5304	891	8
63	3.415	0.6041	896	9
64	3.853	0.7294	899	11
65	4.579	1.0160	899	15
66	6.000	1.5000	899	22

Table 7.F.19 Scale Score Conversion Table with CSEMs of the Accommodated Form for Grade Eight

Raw Score	Theta Score	Theta SEM	Scale Score	SS CSEM
0	-6.000	1.5000	800	22
1	-4.452	1.0398	800	15
2	-3.681	0.7572	800	11
3	-3.205	0.6325	800	9
4	-2.853	0.5580	804	8
5	-2.571	0.5073	808	7
6	-2.332	0.4697	811	7
7	-2.125	0.4407	814	6
8	-1.941	0.4175	817	6
9	-1.775	0.3984	820	6
10	-1.623	0.3825	822	6
11	-1.482	0.3689	824	5
12	-1.350	0.3571	826	5
13	-1.226	0.3469	828	5
14	-1.109	0.3380	829	5
15	-0.997	0.3302	831	5
16	-0.890	0.3232	833	5
17	-0.788	0.3171	834	5
18	-0.689	0.3117	835	5
19	-0.593	0.3069	837	5
20	-0.500	0.3026	838	4
21	-0.410	0.2989	840	4
22	-0.321	0.2956	841	4
23	-0.235	0.2928	842	4
24	-0.150	0.2904	843	4
25	-0.066	0.2884	845	4
26	0.017	0.2867	846	4
27	0.099	0.2854	847	4
28	0.180	0.2844	848	4
29	0.261	0.2838	849	4
30	0.341	0.2835	851	4
31	0.422	0.2835	852	4
32	0.502	0.2839	853	4
33	0.583	0.2846	854	4
34	0.665	0.2857	855	4
35	0.747	0.2872	857	4
36	0.830	0.2890	858	4
37	0.914	0.2912	859	4
38	1.000	0.2939	860	4

Table 7.F.19 (*continuation*)

Raw Score	Theta Score	Theta SEM	Scale Score	SS CSEM
39	1.087	0.2971	862	4
40	1.176	0.3008	863	4
41	1.268	0.3052	864	4
42	1.363	0.3102	866	5
43	1.461	0.3159	867	5
44	1.563	0.3226	869	5
45	1.670	0.3304	870	5
46	1.782	0.3393	872	5
47	1.900	0.3497	873	5
48	2.027	0.3621	875	5
49	2.163	0.3768	877	6
50	2.312	0.3945	880	6
51	2.476	0.4164	882	6
52	2.661	0.4440	885	7
53	2.874	0.4801	888	7
54	3.128	0.5297	892	8
55	3.447	0.6035	896	9
56	3.884	0.7289	899	11
57	4.608	1.0152	899	15
58	6.000	1.5000	899	22

Table 7.F.20 Scale Score Conversion Table with CSEMs of the Regular Form for High School

Raw Score	Theta Score	Theta SEM	Scale Score	SS CSEM
0	-6.000	1.5000	900	21
1	-4.569	1.0255	900	14
2	-3.824	0.7412	900	10
3	-3.370	0.6172	901	8
4	-3.035	0.5436	906	7
5	-2.767	0.4937	909	7
6	-2.542	0.4570	912	6
7	-2.346	0.4286	915	6
8	-2.172	0.4057	918	6
9	-2.015	0.3869	920	5
10	-1.872	0.3712	922	5
11	-1.739	0.3577	923	5
12	-1.615	0.3461	925	5
13	-1.499	0.3361	927	5
14	-1.389	0.3273	928	5
15	-1.284	0.3195	930	4
16	-1.184	0.3126	931	4
17	-1.088	0.3065	932	4
18	-0.996	0.3011	934	4
19	-0.907	0.2962	935	4
20	-0.820	0.2919	936	4
21	-0.736	0.2881	937	4
22	-0.654	0.2847	938	4
23	-0.574	0.2817	940	4
24	-0.495	0.2790	941	4
25	-0.418	0.2767	942	4
26	-0.342	0.2747	943	4
27	-0.267	0.2730	944	4
28	-0.192	0.2716	945	4
29	-0.119	0.2705	946	4
30	-0.046	0.2696	947	4
31	0.027	0.2690	948	4
32	0.099	0.2686	949	4
33	0.171	0.2685	950	4
34	0.243	0.2686	951	4
35	0.315	0.2690	952	4
36	0.388	0.2696	953	4
37	0.461	0.2705	954	4
38	0.535	0.2716	955	4

Table 7.F.20 (continuation)

Raw Score	Theta Score	Theta SEM	Scale Score	SS CSEM
39	0.609	0.2731	956	4
40	0.684	0.2748	957	4
41	0.760	0.2769	958	4
42	0.837	0.2793	959	4
43	0.916	0.2821	960	4
44	0.997	0.2853	961	4
45	1.079	0.2889	962	4
46	1.164	0.2930	963	4
47	1.251	0.2977	965	4
48	1.341	0.3030	966	4
49	1.435	0.3091	967	4
50	1.533	0.3160	968	4
51	1.635	0.3239	970	4
52	1.743	0.3331	971	5
53	1.858	0.3438	973	5
54	1.980	0.3562	975	5
55	2.112	0.3710	976	5
56	2.257	0.3889	978	5
57	2.416	0.4107	981	6
58	2.596	0.4384	983	6
59	2.804	0.4745	986	7
60	3.052	0.5242	989	7
61	3.365	0.5982	994	8
62	3.795	0.7238	999	10
63	4.512	1.0112	999	14
64	6.000	1.5000	999	21

Table 7.F.21 Scale Score Conversion Table with CSEMs of the Accommodated Form for High School

Raw Score	Theta Score	Theta SEM	Scale Score	SS CSEM
0	-6.000	1.5000	900	21
1	-4.640	1.0292	900	14
2	-3.888	0.7473	900	10
3	-3.424	0.6241	900	9
4	-3.081	0.5515	905	8
5	-2.805	0.5021	909	7
6	-2.571	0.4655	912	6
7	-2.368	0.4371	915	6
8	-2.187	0.4142	917	6
9	-2.023	0.3951	920	5
10	-1.873	0.3791	922	5
11	-1.735	0.3655	924	5
12	-1.605	0.3536	925	5
13	-1.484	0.3433	927	5
14	-1.369	0.3342	929	5
15	-1.260	0.3262	930	4
16	-1.156	0.3192	931	4
17	-1.056	0.3129	933	4
18	-0.960	0.3074	934	4
19	-0.867	0.3025	935	4
20	-0.777	0.2981	937	4
21	-0.689	0.2943	938	4
22	-0.603	0.2909	939	4
23	-0.519	0.2879	940	4
24	-0.437	0.2853	941	4
25	-0.356	0.2831	943	4
26	-0.277	0.2812	944	4
27	-0.198	0.2797	945	4
28	-0.120	0.2785	946	4
29	-0.043	0.2775	947	4
30	0.034	0.2769	948	4
31	0.111	0.2765	949	4
32	0.187	0.2764	950	4
33	0.264	0.2766	951	4
34	0.340	0.2771	952	4
35	0.417	0.2778	953	4
36	0.495	0.2789	954	4
37	0.573	0.2802	955	4
38	0.652	0.2819	956	4

Table 7.F.21 (continuation)

Raw Score	Theta Score	Theta SEM	Scale Score	SS CSEM
39	0.732	0.2839	957	4
40	0.814	0.2863	959	4
41	0.896	0.2890	960	4
42	0.981	0.2921	961	4
43	1.067	0.2957	962	4
44	1.156	0.2998	963	4
45	1.247	0.3044	965	4
46	1.342	0.3098	966	4
47	1.440	0.3158	967	4
48	1.541	0.3226	969	4
49	1.648	0.3305	970	5
50	1.760	0.3395	972	5
51	1.879	0.3500	973	5
52	2.006	0.3624	975	5
53	2.143	0.3770	977	5
54	2.292	0.3947	979	5
55	2.456	0.4163	981	6
56	2.641	0.4438	984	6
57	2.853	0.4795	987	7
58	3.106	0.5287	990	7
59	3.424	0.6023	994	8
60	3.859	0.7274	999	10
61	4.581	1.0140	999	14
62	6.000	1.5000	999	21

Table 7.F.22 Reliability of Classification for Grade Three: Decision Accuracy, True Status on All Forms Average

Reporting Score	Score Reporting Range 1	Score Reporting Range 2	Score Reporting Range 3	Category Total
300–348	0.48	0.06	0.00	0.54
349–359	0.06	0.24	0.02	0.32
360–399	0.00	0.04	0.10	0.14

Estimated proportion correctly classified: total = 0.82

Table 7.F.23 Reliability of Classification for Grade Three: Decision Consistency, Decision Made on a Single Form

Reporting Score	Score Reporting Range 1	Score Reporting Range 2	Score Reporting Range 3	Category Total
300–348	0.45	0.08	0.00	0.54
349–359	0.08	0.20	0.04	0.32
360–399	0.00	0.04	0.10	0.14

Estimated proportion consistently classified: total = 0.75

Table 7.F.24 Reliability of Classification for Grade Four: Decision Accuracy, True Status on All Forms Average

Reporting Score	Score Reporting Range 1	Score Reporting Range 2	Score Reporting Range 3	Category Total
400–448	0.48	0.06	0.00	0.55
449–459	0.06	0.24	0.02	0.31
460–499	0.00	0.04	0.11	0.15

Estimated proportion correctly classified: total = 0.83

Table 7.F.25 Reliability of Classification for Grade Four: Decision Consistency, Decision Made on a Single Form

Reporting Score	Score Reporting Range 1	Score Reporting Range 2	Score Reporting Range 3	Category Total
400–448	0.46	0.09	0.00	0.55
449–459	0.07	0.20	0.03	0.31
460–499	0.00	0.04	0.10	0.15

Estimated proportion consistently classified: total = 0.76

Table 7.F.26 Reliability of Classification for Grade Five: Decision Accuracy, True Status on All Forms Average

Reporting Score	Score Reporting Range 1	Score Reporting Range 2	Score Reporting Range 3	Category Total
500–545	0.37	0.09	0.01	0.47
546–559	0.06	0.33	0.01	0.40
560–599	0.00	0.05	0.08	0.13

Estimated proportion correctly classified: total = 0.78

Table 7.F.27 Reliability of Classification for Grade Five: Decision Consistency, Decision Made on a Single Form

Reporting Score	Score Reporting Range 1	Score Reporting Range 2	Score Reporting Range 3	Category Total
500–545	0.35	0.11	0.01	0.47
546–559	0.09	0.27	0.04	0.40
560–599	0.00	0.05	0.08	0.13

Estimated proportion consistently classified: total = 0.69

Table 7.F.28 Reliability of Classification for Grade Six: Decision Accuracy, True Status on All Forms Average

Reporting Score	Score Reporting Range 1	Score Reporting Range 2	Score Reporting Range 3	Category Total
600–647	0.36	0.07	0.00	0.43
648–659	0.06	0.31	0.03	0.40
660–699	0.00	0.05	0.12	0.17

Estimated proportion correctly classified: total = 0.79

Table 7.F.29 Reliability of Classification for Grade Six: Decision Consistency, Decision Made on a Single Form

Reporting Score	Score Reporting Range 1	Score Reporting Range 2	Score Reporting Range 3	Category Total
600–647	0.33	0.09	0.00	0.43
648–659	0.09	0.26	0.05	0.40
660–699	0.00	0.05	0.12	0.17

Estimated proportion consistently classified: total = 0.71

Table 7.F.30 Reliability of Classification for Grade Seven: Decision Accuracy, True Status on All Forms Average

Reporting Score	Score Reporting Range 1	Score Reporting Range 2	Score Reporting Range 3	Category Total
700–743	0.52	0.07	0.00	0.59
744–759	0.07	0.29	0.00	0.36
760–799	0.00	0.02	0.02	0.05

Estimated proportion correctly classified: total = 0.84

Table 7.F.31 Reliability of Classification for Grade Seven: Decision Consistency, Decision Made on a Single Form

Reporting Score	Score Reporting Range 1	Score Reporting Range 2	Score Reporting Range 3	Category Total
700–743	0.49	0.10	0.00	0.59
744–759	0.09	0.25	0.02	0.36
760–799	0.00	0.02	0.02	0.05

Estimated proportion consistently classified: total = 0.77

Table 7.F.32 Reliability of Classification for Grade Eight: Decision Accuracy, True Status on All Forms Average

Reporting Score	Score Reporting Range 1	Score Reporting Range 2	Score Reporting Range 3	Category Total
800–847	0.54	0.05	0.00	0.59
848–859	0.07	0.23	0.02	0.32
860–899	0.00	0.04	0.05	0.09

Estimated proportion correctly classified: total = 0.82

Table 7.F.33 Reliability of Classification for Grade Eight: Decision Consistency, Decision Made on a Single Form

Reporting Score	Score Reporting Range 1	Score Reporting Range 2	Score Reporting Range 3	Category Total
800–847	0.50	0.09	0.00	0.59
848–859	0.09	0.19	0.03	0.32
860–899	0.00	0.03	0.05	0.09

Estimated proportion consistently classified: total = 0.75

Table 7.F.34 Reliability of Classification for High School: Decision Accuracy, True Status on All Forms Average

Reporting Score	Score Reporting Range 1	Score Reporting Range 2	Score Reporting Range 3	Category Total
900–949	0.53	0.07	0.00	0.60
950–959	0.07	0.22	0.02	0.31
960–999	0.00	0.04	0.05	0.09

Estimated proportion correctly classified: total = 0.81

Table 7.F.35 Reliability of Classification for High School: Decision Consistency, Decision Made on a Single Form

Reporting Score	Score Reporting Range 1	Score Reporting Range 2	Score Reporting Range 3	Category Total
900–949	0.50	0.10	0.00	0.60
950–959	0.09	0.18	0.04	0.31
960–999	0.00	0.04	0.05	0.09

Estimated proportion consistently classified: total = 0.73