

This document was provided, as is, to the California Department of Education (CDE) by **Ross Valley Charter**. This document is posted to the CDE website to meet the legal requirements of California *Education Code* Section 33009.5.

For more information regarding the content of this material, please contact the Charter Schools Division by phone at 916-322-6029 or by email at charters@cde.ca.gov.



ROSS VALLEY
CHARTER
A TK-5 PUBLIC SCHOOL
Be Curious

Charter Renewal Petition Hearing

For the term from July 1, 2021 to June 30, 2026





School Profile

Our Staff:

- 9 classroom teachers, a full-time Special Ed teacher, and classroom aides
- School Director, Office Manager, and Receptionist
- Family Outreach Coordinator, EL and Intervention Teacher
- Art, Music, PE Teachers

Educational Program



- Inquiry based curriculum
- Multi-age classes
- Educating the whole child
- Connected community
- Choice
- Collaboration & collective responsibility
- Joyful learning environment
- Continued through Distance Learning



	Af. Am.	AI or AN	Asian	Filipino	Hisp. or Latino	Pac. Islander	White	Two or More	EL	SPED
Ross Valley School District	1%	.2%	2.5%	0.3%	11.2%	0.2%	76.4%	7.7%	3.6%	10.6% (18/19)
Ross Valley Charter	3.1%	0.0%	2.6%	0.5%	27.8%	0.0%	53.6%	8.8%	20.1%	11.9%
Marin County	1.7%	0.4%	4.6%	0.6%	31.5%	0.2%	54.1%	5.8%	15.2%	12% (18/19)

Serving Needs in Our Community

- Enrollment has grown each year, showing that families are looking for choice in education
- Close to maximum capacity
- 28.4% of students eligible for the Free/Reduced Price Lunch program, close to three times the District %
- EL is 20%, five times the District %
- Retention rate close to 95%
- 96.4% of parents report that their children have a strong sense of belonging at the school.



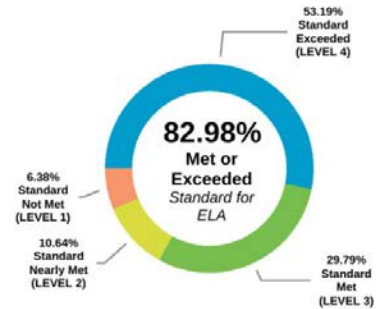
Ross Valley Charter School Presentation
 for February 2021 ACCS Meeting

Student Outcomes

Ross Valley Charter English Language Arts CAASPP Results 2018-19

ELA

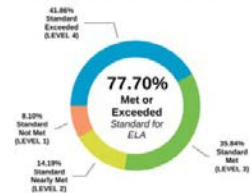
Percent of students within each achievement level



Comparison Scores

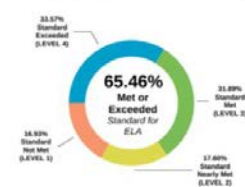
Ross Valley School District

Percent of students within each achievement level



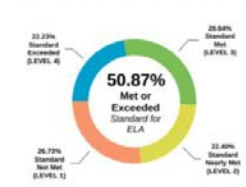
Marin County

Percent of students within each achievement level



State of California

Percent of students within each achievement level



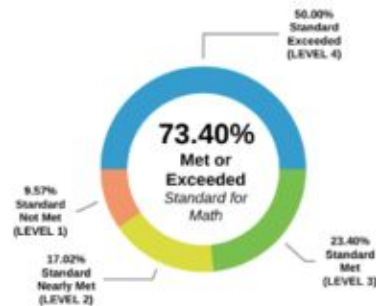
Ross Valley Charter School Presentation
 for February 2021 ACCS Meeting

Student Outcomes

Ross Valley Charter Math CAASPP Results 2018-19

Mathematics

Percent of students within each achievement level

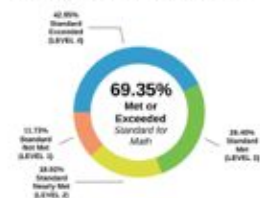


Comparison Scores

Ross Valley School District

Mathematics

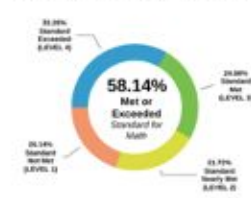
Percent of students within each achievement level



Marin County

Mathematics

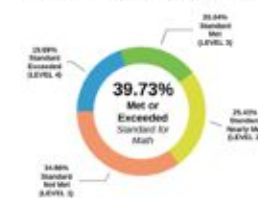
Percent of students within each achievement level



State of California

Mathematics

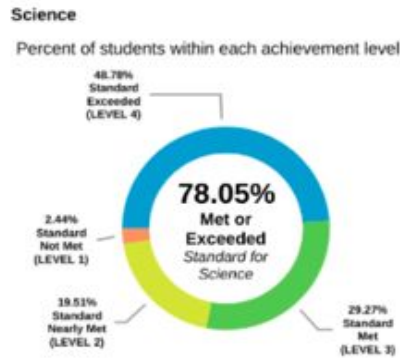
Percent of students within each achievement level



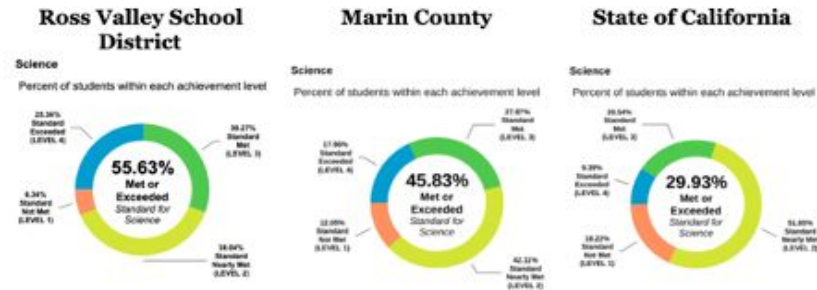
Ross Valley Charter School Presentation
 for February 2021 ACCS Meeting

Student Outcomes

Ross Valley Charter Science Results 2018-19



Comparison Scores



Year Over Year CAASPP Growth

Demographic	Assessment	2018	2019	Growth
Schoolwide	ELA	70%	83%	+19%
	Math	64%	73%	+14%
Hispanic or Latino	ELA	19%	48%	+153%
	Math	25%	48%	+92%
White	ELA	83%	93%	+12%
	Math	75%	80%	+7%
Economically Disadvantaged	ELA	18%	47%	+161%
	Math	29%	37%	+28%
English Learner	ELA	0%	33%	+330%
	Math	9%	25%	+178%

Governance Stability



- **School Director** Luke Duchene since May 2017 (previously school admin at SF Unified School District)
- **5 Board Members** Board Chair: Sharon Sagar 20+ years governance experience (including 15 years Ross Valley School District Board), 2 Parents, 2 Community Members. Average RVC board tenure of current members is 4 years.
- **Non-Profit 501(c)(3) Corporation**

Recent Developments



- Moved from Prop 39 site to St. Rita campus June 2019 with 9 year lease, removing source of community conflict
- Voluntary ADA Barrier Removal Project completed October 5th included parking, path of travel, restroom, classroom access improvements
- Upgraded Fire/Life/Safety system to meet up-to-date system requirements (existing system was approved at move-in, ADA work triggered upgrade)

Response to Pandemic



- Opened to in-person instruction in November
- Hybrid cohort model
- Students stay with their teacher
- Continued Enrichment
- Social and emotional wellbeing
- Providing EL and SPED services
- Incorporating our key elements
- Providing outreach support to students and families

CDE Review of Renewal Appeal

- Overall positive review
- We accept all conditions put forth
- We follow cycles of continuous improvement and are addressing items that kept us from being 'High Achieving'
- Look forward to answering any questions and hearing feedback





Thank You



ROSS VALLEY
CHARTER
A TK-5 PUBLIC SCHOOL
Be Curious

