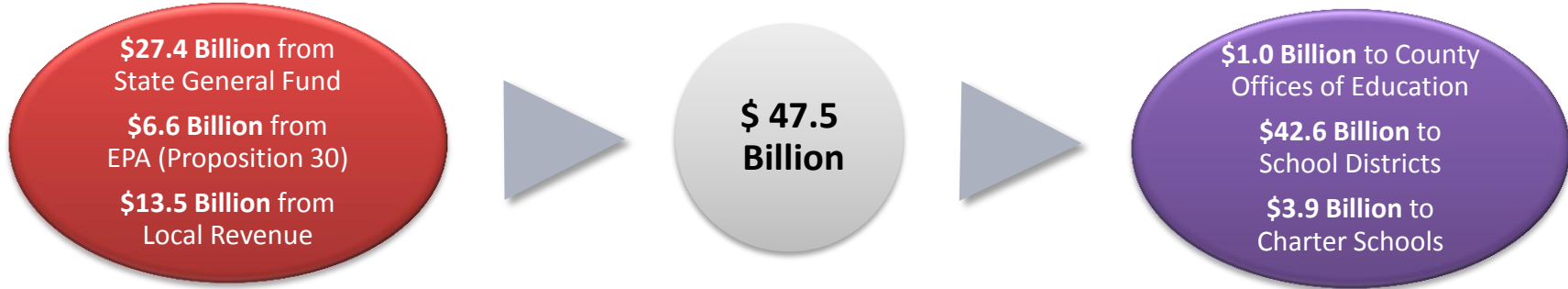




I. 2014–15 AT A GLANCE

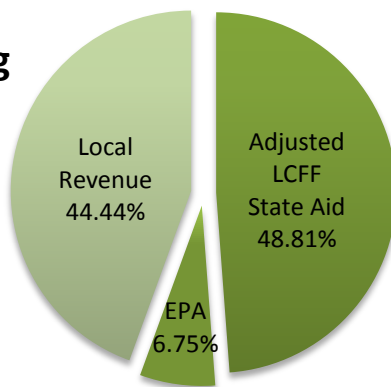


LCFF Funding Detail

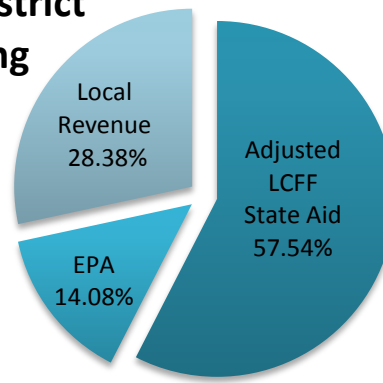
Sources	County Offices of Education (COEs)	School Districts	Charter Schools	Statewide Total
LCFF State Aid before Minimum State Aid (MSA)	\$ 481,379,312	\$ 24,382,242,518	\$ 2,411,149,939	\$ 27,274,771,769
Additional State Aid for MSA Guarantee	<u>27,029,862</u>	<u>107,341,699</u>	<u>954,342</u>	135,325,903
Adjusted LCFF State Aid (subtotal)	508,409,174	24,489,584,217	2,412,104,281	27,410,097,672
Education Protection Account (EPA) State Aid	70,337,186	5,995,207,423	569,614,540	6,635,159,149
Local Revenue/In-Lieu of Property Taxes*	<u>462,895,421</u>	<u>12,078,440,983</u>	<u>949,343,407</u>	13,490,679,811
Total LCFF Funding Sources	\$ 1,041,641,781	\$ 42,563,232,623	\$ 3,931,062,228	\$ 47,535,936,632

*Amount does not include excess local revenue.

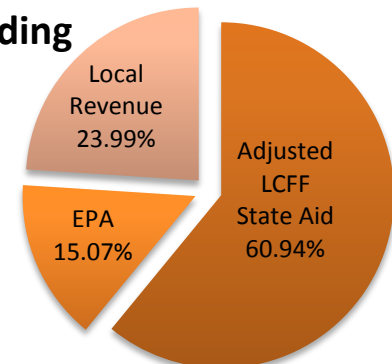
COE Funding



School District Funding



Charter School Funding



I. 2014–15 AT A GLANCE

Determination of Statewide Remaining Need for LCFF Full Transition

Remaining Need Calculation	COEs	School Districts	Charter Schools	Total
2014–15 LCFF Target Entitlement	\$ 843,961,458	\$ 52,868,371,731	\$ 4,865,616,393	\$ 58,577,949,582
Less LCFF Floor, OR LCFF Target Amount for LEAs Funded at the LCFF Target*	(824,830,749)	(38,060,887,983)	(3,542,118,796)	(42,427,837,528)
Less Current Year Gap Funding (Based on Preliminary Statewide Gap Rate of 100% for COEs & 29.27% for Districts and Charters)	(19,130,709)	(4,334,546,837)	(387,423,194)	(4,741,100,740)
Statewide Remaining Need	\$ 0	\$ 10,472,936,911	\$ 936,074,403	\$ 11,409,011,314

*COEs may be funded above LCFF Target based on “hold harmless” provisions of *Education Code* Section 2575(g)(2).

II. COUNTY OFFICE OF EDUCATION DATA

LCFF Funding Summary

LCFF Floor and Gap vs. Hold Harmless	Number of COEs	Amount
Funding Based on LCFF Floor and Gap per <i>Education Code</i> Section 2575(g)(1)	22	\$ 280,754,296
Funding Based on “Hold Harmless” provisions of <i>Education Code</i> Section 2575(g)(2)	36	\$ 733,630,501

Minimum State Aid (MSA)	
Number of COEs Receiving Additional State Aid for MSA Guarantee	13
Amount of Additional State Aid for MSA Guarantee	\$ 27,029,862

LCFF Target Entitlement Calculation

LCFF Target Components	Number of COEs Represented	Amount
Base Grant Funding	54	\$ 254,474,379
Supplemental Grant Funding	54	77,425,150
Concentration Grant Funding	54	<u>32,965,950</u>
Alternative Education Grant (subtotal)		\$ 364,865,479
Operations Grant Funding	58	445,530,941
Add-on Funding	38	<u>33,565,038</u>
Total LCFF Target Entitlement		\$ 843,961,458

Alternative Education Grant ADA	
Non-Juvenile Court School ADA	13,070.32
Juvenile Court School ADA	9,423.34
Total County Funded ADA	22,493.66
Unduplicated Pupil Percentage (UPP)	
COEs’ Average UPP (Non-Juvenile Court School)	84.93%
Lowest non-zero UPP (Non-Juvenile Court School)	47.44%

III. SCHOOL DISTRICT AND CHARTER SCHOOL DATA

LCFF Transition Entitlement Summary

LCFF Transition Components	School Districts Receiving Funding			Charter Schools Receiving Funding			Total	
	Number	% of Districts	Amount	Number	% of Charters	Amount	Number of LEAs	Amount
LCFF Floor Entitlement	905	96%	\$ 38,012,454,475	1,142	99%	\$ 3,517,199,429	2,047	\$ 41,529,653,904
Current Year Gap Funding	905	96%	4,334,546,837	1,142	99%	387,423,194	2,047	4,721,970,031
LCFF Target Entitlement	42	4%	48,433,508	16	1%	24,919,367	58	73,352,875
Economic Recovery Target Payments	122	13%	14,799,047	25	2%	510,977	147	15,310,024
State Aid for MSA Guarantee	158	17%	107,341,699	21	2%	954,342	179	108,296,041
Miscellaneous Adjustments	1	<1%	3,473,574	<i>not applicable to charter schools</i>			1	3,473,574
Total LCFF Transition Entitlement			\$ 42,521,049,140*			\$ 3,931,007,309*		\$ 46,452,056,449

*Total LCFF Transition Entitlement is less than Total LCFF Funding Sources (shown on page 1) due to EPA State Aid minimum guarantee.

LCFF Target Entitlement Calculation

LCFF Target Components	School Districts Represented			Charter Schools Represented			Total	
	Number	% of Districts	Amount	Number	% of Charters	Amount	Number of LEAs	Amount
Base Grant Funding	913	96%	\$ 43,027,001,423	1,158	100%	\$ 4,145,420,968	2,071	\$ 47,172,422,391
Supplemental Grant Funding	947	100%	5,379,525,735	1,153	99%	496,724,676	2,100	5,876,250,411
Concentration Grant Funding	558	59%	3,055,641,693	638	55%	223,470,749	1,196	3,279,112,442
Necessary Small School Allowance	114	12%	102,274,855	<i>not applicable to charter schools</i>			114	100,003,113
Add-on Funding	902	95%	1,303,928,025	<i>not applicable to charter schools</i>			902	1,303,928,025
Total LCFF Target Entitlement			\$ 52,868,371,731			\$ 4,865,616,393		\$ 57,733,988,124

Total Funded Average Daily Attendance (ADA) by Grade Span (includes NSS ADA)

LEA Type	Number of LEAs	TK/K-3	4-6	7-8	9-12	TOTAL ADA
School Districts	947	1,734,059.35	1,266,635.97	828,657.94	1,675,088.64	5,504,441.90
Charter Schools	1,158	146,508.37	108,794.86	82,156.52	187,697.31	525,157.06
TOTAL	2,105	1,880,567.72	1,375,430.83	910,814.46	1,862,785.95	6,029,598.96

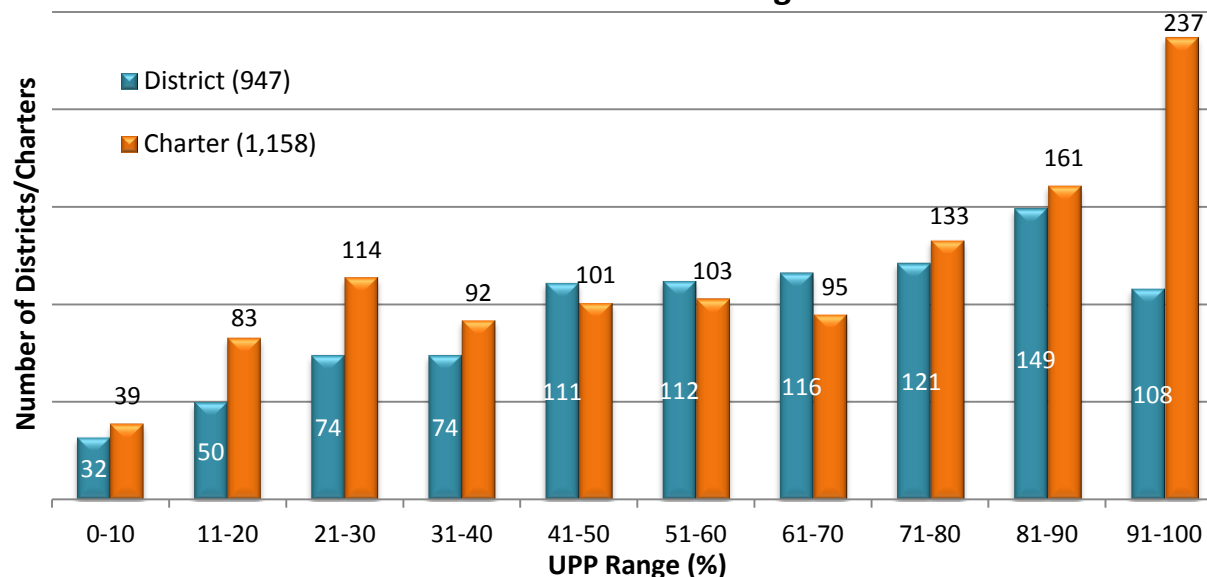
DATA SOURCE: 2014–15 First Principal Apportionment certified funding exhibits for all active LEAs for the complete fiscal year (<http://www.cde.ca.gov/fg/aa/pa/pa1415.asp>)

III. SCHOOL DISTRICT AND CHARTER SCHOOL DATA

Unduplicated Pupil Percentage (UPP)

School Districts' Average UPP	59.86%
Districts with UPP of 100%	14
Districts with UPP of zero	0
Charter Schools' Average UPP	61.20%
Charters with UPP of 100%	14
Charters with UPP of zero	5

School Districts' and Charter Schools' UPP Range



Ten Largest School Districts (based on ADA)

School District Name	ADA	Target per ADA*	UPP
Los Angeles Unified	483,952.72	\$11,058	78.54%
San Diego Unified	106,102.90	\$9,811	63.17%
Long Beach Unified	77,377.12	\$9,705	69.54%
Fresno Unified	67,442.62	\$10,540	87.38%
Elk Grove Unified	59,822.51	\$8,923	58.18%
Santa Ana Unified	52,057.42	\$10,862	94.38%
Corona-Norco Unified	52,021.67	\$8,663	47.69%
San Francisco Unified	51,350.65	\$10,233	68.69%
Capistrano Unified	49,336.80	\$8,323	23.54%
San Bernardino City Unified	47,784.18	\$11,157	93.06%

Ten Largest Charter Schools (based on ADA)

Charter School Name	ADA	Target per ADA*	UPP
River Springs Charter	5,288.23	\$8,386	46.52%
Visions In Education	4,722.41	\$8,798	51.52%
Granada Hills Charter High	4,312.71	\$9,617	51.92%
El Camino Real Charter High	3,633.70	\$9,112	22.97%
California Virtual Academy @ Los Angeles	3,499.96	\$8,967	58.87%
Options for Youth-Victorville Charter	3,367.52	\$11,115	81.14%
Opportunities for Learning - Baldwin Park II	3,291.19	\$11,542	87.03%
Grover Cleveland Charter High	3,152.83	\$10,277	64.94%
Birmingham Community Charter High	3,075.39	\$11,215	84.78%
California Virtual Academy @ San Diego	2,955.99	\$8,765	54.51%

*LCFF Target per ADA is derived by dividing LCFF Target Entitlement by Funded ADA. This amount does not represent actual funding. Target per ADA rates vary due to differences in UPP, the distribution of ADA between the grade spans, and other components of the Target Entitlement.