

Local Control Funding Formula (LCFF) Statewide Fingertip Facts 2022–23 Fiscal Year – Second Principal Apportionment (as of June 2023)

Prepared by: CA Dept. of Education
School Fiscal Services Division

2022–23 AT A GLANCE

Funding Sources:

- \$47.2 Billion from State General Fund
- \$24.3 Billion from Local Revenue
- \$4.1 Billion from Education Protection Account (EPA)

\$75.6 Billion

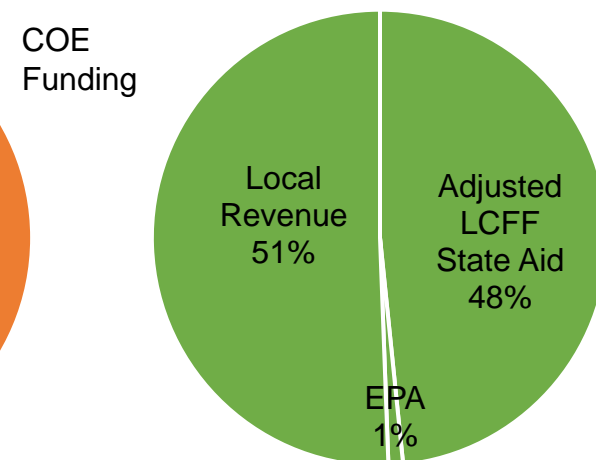
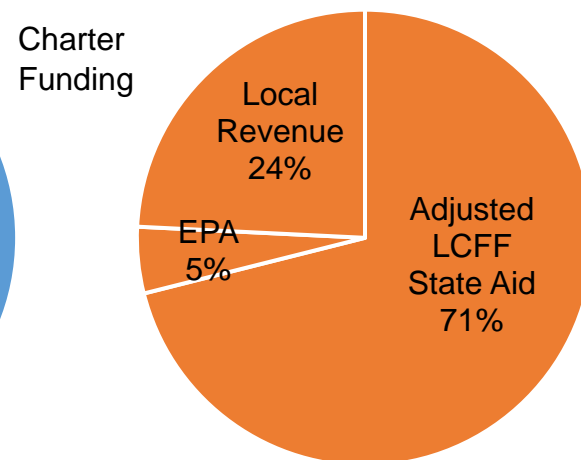
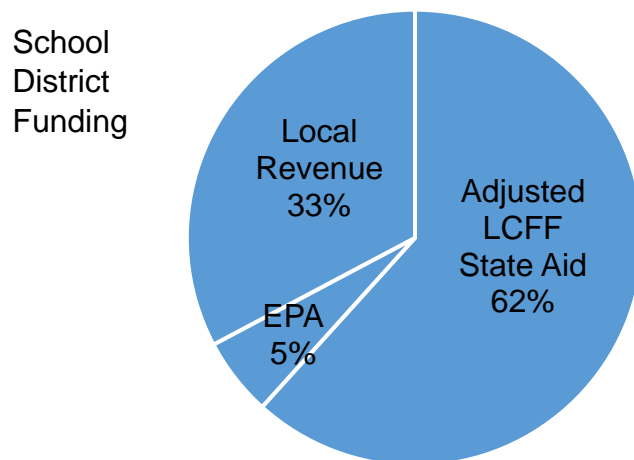
Funding Apportioned:

- \$66.3 Billion to School Districts
- \$8.0 Billion to Charter Schools
- \$1.3 Billion to County Offices of Education (COE)

LCFF Funding Detail

Sources	School Districts	Charter Schools	School District & Charter Subtotal	County Offices of Education	Statewide Total
LCFF State Aid before Minimum State Aid (MSA)	\$40,735,152,945	\$5,684,986,385	\$46,420,139,330	\$376,146,491	\$46,796,285,821
Additional State Aid for MSA Guarantee, Other LCFF State Aid for COEs	186,158,312	534,091	186,692,403	249,592,071	436,284,474
Adjusted LCFF State Aid (subtotal)	40,921,311,257	5,685,520,476	46,606,831,733	625,738,562	47,232,570,295
EPA State Aid	3,681,166,793	376,320,296	4,057,487,089	13,355,997	4,070,843,086
Local Revenue/In-lieu of Property Taxes ¹	21,722,598,496	1,937,449,939	23,660,048,435	654,383,339	24,314,431,774
Total LCFF Funding Sources	\$66,325,076,546	\$7,999,290,711	\$74,324,367,257	\$1,293,477,898	\$75,617,845,155

¹Amounts in table and pie charts do not include excess local revenue.



SCHOOL DISTRICT AND CHARTER SCHOOL DATA

Summary

LCFF Entitlement Component	District Count	% of Districts	District Funding	Charter Count	% of Charters	Charter Funding	Total Count	Total Funding
Base Grant Funding ²	902	96.1%	\$52,671,835,553	1,267	100.0%	\$6,642,797,364	2,169	\$59,314,632,917
Supplemental Grant Funding	939	100.0%	6,659,080,570	1,267	100.0%	817,941,701	2,206	7,477,022,271
Concentration Grant Funding	564	60.1%	5,014,314,203	758	59.8%	505,569,362	1,322	5,519,883,565
Necessary Small School (NSS) Allowance	109	11.6%	134,856,176	n/a	n/a	n/a	109	134,856,176
Add-on Funding	934	99.5%	1,613,751,986	637	50.3%	32,433,478	1571	1,646,185,464
Miscellaneous Adjustments ³	8	0.9%	-112,898	0	0.0%	0	8	-112,898
State Aid for MSA Guarantee	149	15.9%	186,158,312	13	1.0%	534,091	162	186,692,403
Total LCFF Entitlement⁴	n/a	n/a	\$66,279,883,902	n/a	n/a	\$7,999,275,996	n/a	\$74,279,159,898

²Some school districts are fully funded through NSS and do not receive Base Grant Funding; some charter schools have no Base Grant Funding due to zero funded ADA.

³ Adjustments for special legislation, instructional time penalties, and class size penalties.

⁴Total LCFF Entitlement is less than Total LCFF Funding Sources (shown on page 1) due to EPA State Aid minimum guarantee.

Ten Largest School Districts (based on Funded ADA)

School District Name	ADA	UPP
Los Angeles Unified	398,418.77	85.97%
San Diego Unified	95,329.61	58.53%
Long Beach Unified	66,718.06	65.04%
Fresno Unified	66,431.52	88.27%
Elk Grove Unified	60,333.10	50.43%
Corona-Norco Unified	50,116.93	61.27%
San Francisco Unified	49,043.54	58.74%
San Bernardino City Unified	45,227.62	90.69%
Capistrano Unified	43,531.79	30.13%
Santa Ana Unified	42,573.88	84.46%

Ten Largest Charter Schools (based on Funded ADA)

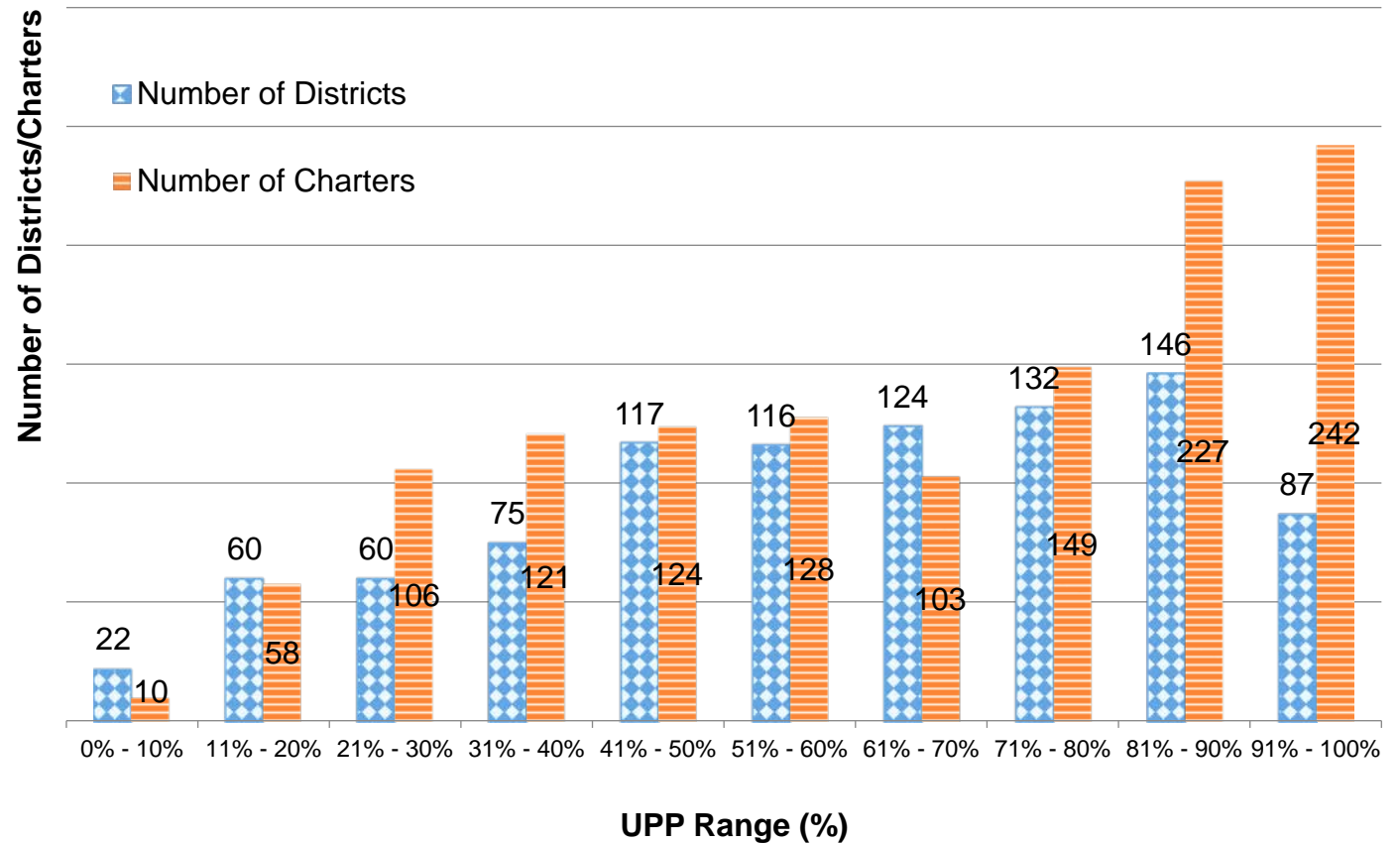
Charter School Name	ADA	UPP
River Springs Charter	6,697.13	57.60%
Blue Ridge Academy	6,650.93	42.05%
Visions In Education	6,311.65	53.15%
Granada Hills Charter	5,539.36	50.35%
California Virtual Academy @ Los Angeles	5,328.02	73.34%
Pacific Coast Academy	4,847.03	38.99%
California Connections Academy Southern California	4,829.86	48.87%
Mission Vista Academy	4,790.81	42.42%
Heartland Charter	4,624.82	42.15%
Highlands Community Charter	4,455.40	98.80%

Total Funded ADA by Grade Span (includes NSS ADA)

LEA Type	Number of LEAs	Grades TK/K-3	Grades 4-6	Grades 7-8	Grades 9-12	TOTAL ADA
School Districts	939	1,553,556.56	1,167,630.08	791,545.86	1,632,852.79	5,145,585.29
Charter Schools	1,268	176,475.71	134,472.36	105,274.00	228,020.71	644,242.78
TOTAL	2,207	1,730,032.27	1,302,102.44	896,819.86	1,860,873.50	5,789,828.07

Unduplicated Pupil Percentage (UPP) Ranges for School Districts and Charter Schools

UPP Range	District Count	Charter Count
0% - 10%	22	10
11% - 20%	60	58
21% - 30%	60	106
31% - 40%	75	121
41% - 50%	117	124
51% - 60%	116	128
61% - 70%	124	103
71% - 80%	132	149
81% - 90%	146	227
91% - 100%	87	242
Total	939	1,268



COUNTY OFFICE OF EDUCATION DATA

LCFF Funding Summary

LCFF Entitlement	Number of COEs	Amount
Funding Based on LCFF Target ⁵	41	\$595,264,930
Funding Based on “Hold Harmless” provisions of <i>EC</i> Section 2575(g)(2)	17	\$448,058,655

⁵Final determination of LEAs funded at the LCFF Target is made at the Second Principal (P-2) Apportionment.

LCFF Target Entitlement Calculation

LCFF Target Components	Number of COEs	Amount
Base Grant Funding	52	\$119,396,505
Supplemental Grant Funding	49	36,233,053
Concentration Grant Funding	49	15,451,853
Alternative Education Grant (subtotal)	n/a	171,081,411
Operations Grant Funding	58	765,686,938
Add-on Funding	36	30,684,488
Total LCFF Target Entitlement	n/a	\$967,452,837

Alternative Education Grant Average Daily Attendance (ADA)

Non-Juvenile Court School ADA	5,785.36
Juvenile Court School ADA	2,877.27
Total County Funded ADA	8,662.63

Unduplicated Pupil Percentage (UPP)

Average UPP (Non-Juvenile Court School)	76.41%
Lowest non-zero UPP (Non-Juvenile Court School)	45.20%

Additional State Aid

Additional State Aid Component	Number of COEs	Amount
Additional State Aid for Minimum State Aid Guarantee	24	\$155,068,289
State Aid Pursuant to <i>EC</i> Section 2575.1	24	8,290,451
State Aid Pursuant to <i>EC</i> Section 2575.2	58	86,233,331
Total Additional State Aid	n/a	\$249,592,071