



**JACK O'CONNELL**  
State Superintendent  
of Public Instruction

# California's Early Learning Quality Improvement System

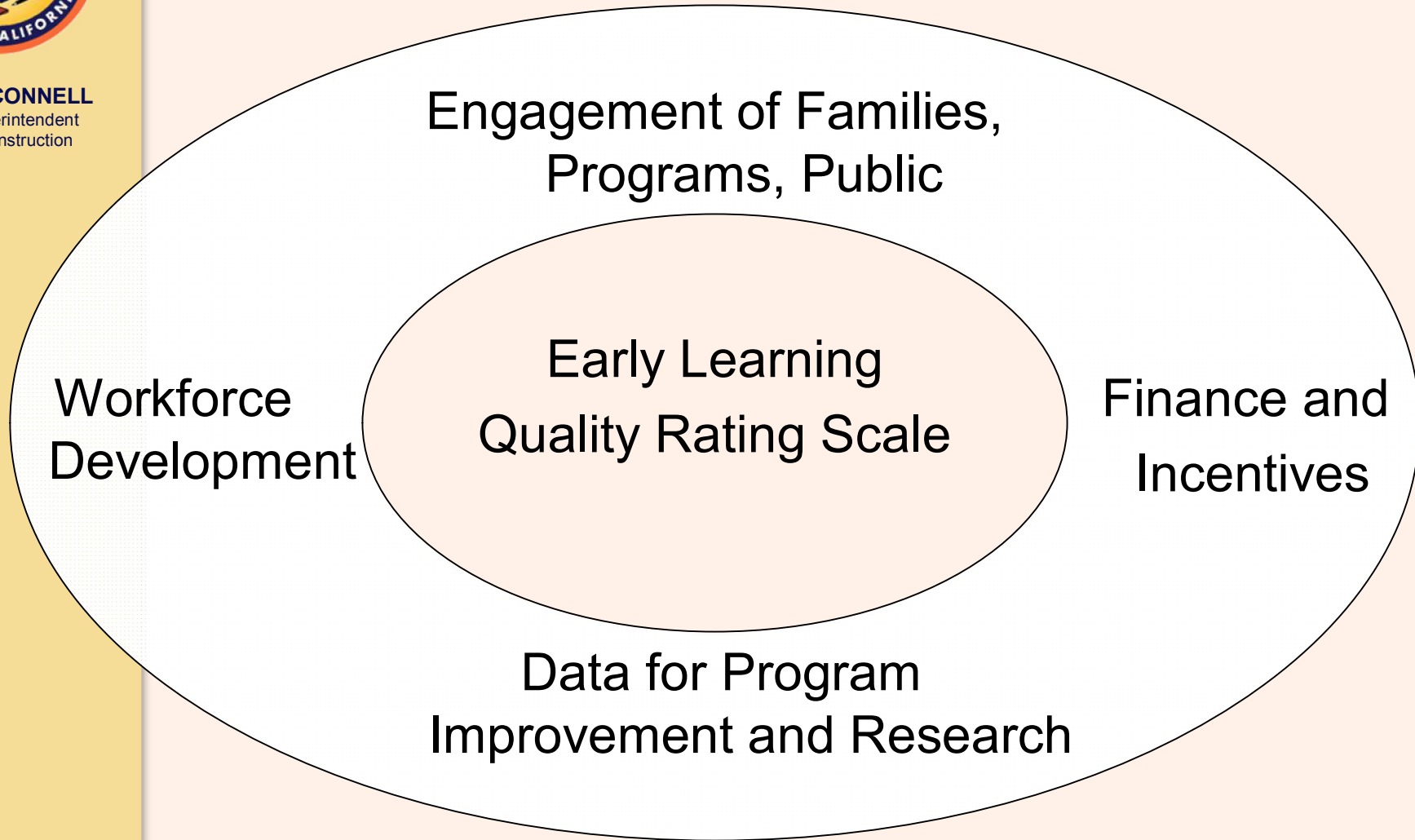
## Workplan Overview

August 26, 2009



**JACK O'CONNELL**  
State Superintendent  
of Public Instruction

# Model for CA's Early Learning Quality Improvement System





**JACK O'CONNELL**  
State Superintendent  
of Public Instruction

# Workplan Development

- All Subcommittees met in July
- Built on key questions discussed at Advisory Committee meetings to develop workplan questions/topics
- Workplans will change as needed to reflect work of other Subcommittees and directions from the Advisory Committee



**JACK O'CONNELL**  
State Superintendent  
of Public Instruction

# Workplans

... continued

- Subcommittees will distill information by:
  - clarifying issues with research, data, and research-based promising practices;
  - outlining possible alternatives including pros/cons, timeline, and funding; and
  - presenting likely results of each alternative.
- Subcommittees will report back to the Advisory Committee for discussion and decisions on



**JACK O'CONNELL**  
State Superintendent  
of Public Instruction

# Subcommittee Timeline

**September  
2009  
through  
September  
2010**





**JACK O'CONNELL**  
State Superintendent  
of Public Instruction

# Draft Workplan Topics

<b>Subcommittee</b>	<b>Meetings 1-2</b>	<b>Meetings 3-4</b>
<b>Design</b>	Rating Structure Elements	Rating Structure Supports
<b>Workforce</b>	Professional Standards and System	Professional Development System
<b>Data</b>	Analyze assumptions and what we want to learn	Available data and gaps
<b>Engagement</b>	Communication and Input Plan for Parents & Providers	Communication and Input Plan for Public
<b>Finance</b>	Analyze ECE Resources and Begin Cost Analysis	Analyze options for Incentives and Funding Models



**JACK O'CONNELL**  
State Superintendent  
of Public Instruction

# Draft Workplan Topics cont.

<b>Subcommittee</b>	<b>Topics</b>	<b>Topics</b>
<b>Design</b>	Build on and Restructure Infrastructure	Who Participates and Oversight
<b>Workforce</b>	Data and Financing	Professional Standards Synthesis
<b>Data</b>	Data Elements for QIS	Data Access, Updating, Accountability
<b>Engagement</b>	Engagement Plan for Parents	Engagement Plan for Providers and the Public
<b>Finance</b>	Tiered Reimbursement; Cost Analysis for Data	Cost Analysis for Workforce Development and Engagement; 5-year Projections



**JACK O'CONNELL**  
State Superintendent  
of Public Instruction

# Subcommittee Coordination

- Advisory Committee member participation on multiple Subcommittees
- Subcommittee reports to Advisory Committee
- Expert Consultant and Staff coordination through regular meetings
- Periodic review of workplans
- Information posted on website

