

California School Dashboard

What Data Were Used for the Spring 2017 Dashboard?

The table below lists the indicators uploaded by the California Department of Education to the Dashboard and the year(s) of data used to calculate Status and Change for the Spring 2017 release of the Dashboard.

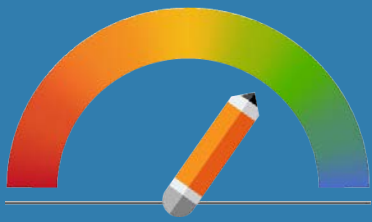
Indicator	Data Used for Status	Data Used for Change
Academic Indicator	2016 Average Distance from Level 3 (2016 Smarter Balanced Summative Assessments for ELA* and mathematics)	2016 Average Distance from Level 3 <i>minus</i> 2015 Average Distance from Level 3
Graduation Rate Indicator	2014–15 four-year cohort graduation rate (Class of 2015)	2014–15 four-year cohort graduation rate <i>minus</i> Three-year weighted average (i.e., 2013–14, 2012–13, and 2011–12)
Suspension Rate Indicator	2014–15 suspension rate	2014–15 suspension rate <i>minus</i> 2013–14 suspension rate
English Learner Proficiency Indicator	2015 and 2014 CELDT + 2014 reclassification data	2015 and 2014 CELDT + 2014 reclassification data <i>minus</i> 2014 and 2013 CELDT + 2013 reclassification data
College/ Career Indicator†	Graduates in the 2013–14 four-year graduation cohort (class of 2014) who are “Prepared”, “Approaching Prepared”, and “Not Prepared” (no performance level or color)	Not Applicable

* ELA: English language arts/literacy

† Grade 11 Distance from Level 3 provides Status and Change; a performance color is not displayed.

Additional information about the indicators can be found in the **California School Dashboard Technical Guide**, which is located on the California Accountability Model & School Dashboard page of the California Department of Education Web site at <http://www.cde.ca.gov/dashboard>.





California School Dashboard

What Data Will Be Used for the Fall 2017 Dashboard?

The table below lists the indicators uploaded by the California Department of Education to the Dashboard and the anticipated year(s) of data used to calculate Status and Change for the Fall 2017 release of the Dashboard. Note that the State Board of Education will review these indicators at their September 2017 meeting, and therefore, the information in the table is subject to change.

Indicator	Anticipated Data for Status	Anticipated Data for Change
Academic Indicator	2017 Average Distance from Level 3 (2017 Smarter Balanced Summative Assessments for ELA* and mathematics)	2017 Average Distance from Level 3 <i>minus</i> 2016 Average Distance from Level 3
Graduation Rate Indicator	2015–16 four-year cohort graduation rate (Class of 2016)	2015–16 four-year cohort graduation rate <i>minus</i> Three-year weighted average (i.e., 2014–15, 2013–14, and 2012–13)
Suspension Rate Indicator	2016–17 suspension rate	2016–17 suspension rate <i>minus</i> 2015–16 suspension rate
English Learner Proficiency Indicator	2017 and 2016 CELDT + 2016 reclassification data	2017 and 2016 CELDT + 2016 reclassification data <i>minus</i> 2016 and 2015 CELDT + 2015 reclassification data
College/ Career Indicator†	Graduates in the 2015–16 four-year graduation cohort (Class of 2016) Status only reported (No performance level or color)	Not Applicable

* ELA: English language arts/literacy

† Grade 11 Smarter Balanced results are included in the College/Career Indicator. However for transparency purposes, the Distance from Level 3 will also be reported.

Additional information about the indicators can be found in the **California School Dashboard Technical Guide**, which is located on the California Accountability Model & School Dashboard page of the California Department of Education Web site at <http://www.cde.ca.gov/dashboard>.

