



**I. 2017–18 AT A GLANCE**

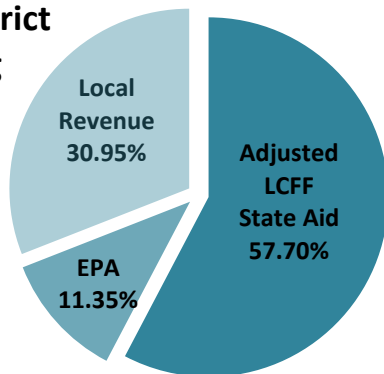


**LCFF Funding Detail**

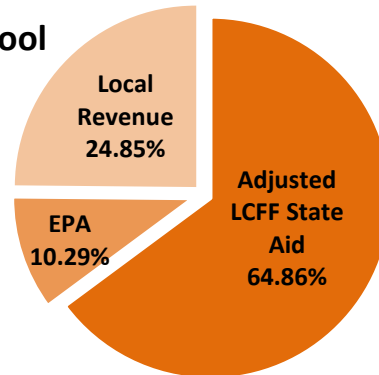
Sources	School Districts	Charter Schools	School District & Charter Subtotal	County Offices of Education (COE)	Statewide Total
LCFF State Aid before Minimum State Aid (MSA)	\$ 29,678,874,242	\$ 3,714,982,119	\$ 33,393,856,361	\$ 345,080,429	\$ 33,738,936,790
Additional State Aid for MSA Guarantee	<u>136,713,828</u>	<u>981,292</u>	<u>137,695,120</u>	<u>90,472,079</u>	<b>228,167,199</b>
Adjusted LCFF State Aid (subtotal)	29,815,588,070	3,715,963,411	33,531,551,481	435,552,508	<b>33,967,103,989</b>
Education Protection Account (EPA) State Aid	5,868,457,371	589,535,100	6,457,992,471	60,580,233	<b>6,518,572,704</b>
Local Revenue/In-Lieu of Property Taxes*	<u>15,992,179,488</u>	<u>1,423,777,710</u>	<u>17,415,957,198</u>	<u>546,547,805</u>	<u>17,962,505,003</u>
<b>Total LCFF Funding Sources</b>	<b>\$ 51,676,224,929</b>	<b>\$ 5,729,276,221</b>	<b>\$ 57,405,501,150</b>	<b>\$ 1,042,680,546</b>	<b>\$ 58,448,181,696</b>

\*Amounts in table and pie charts do not include excess local revenue.

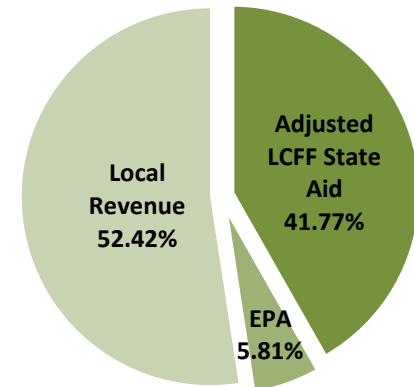
**School District Funding**



**Charter School Funding**



**COE Funding**



## I. 2017–18 AT A GLANCE

### Determination of Statewide Remaining Need for LCFF Full Transition

Remaining Need Calculation*	School Districts	Charter Schools	Total
2017–18 LCFF Target Entitlement	\$ 53,186,299,750	\$ 5,912,874,153	\$ 59,099,173,903
Less LCFF Floor, OR LCFF Target Amount for LEAs Funded at the LCFF Target**	(50,211,555,319)	(5,593,187,406)	(55,804,742,725)
Less Current Year Gap Funding (Based on Statewide Gap Rate of 41.86%)	(1,245,300,065)	(133,828,626)	(1,379,128,691)
<b>Statewide Remaining Need</b>	<b>\$ 1,729,444,366</b>	<b>\$ 185,858,121</b>	<b>\$ 1,915,302,487</b>

\*Remaining Need Calculation is not applicable to COEs; as of 2014-15, all COEs are either funded at the Target or above based on “hold harmless” provisions of *Education Code* Section 2575(g)(2).

\*\*Final determination of LEAs funded at the LCFF Target is made at the Second Principal Apportionment.

## II. COUNTY OFFICE OF EDUCATION DATA

### LCFF Funding Summary

LCFF Entitlement	Number of COEs	Amount
Funding Based on LCFF Target*	25	\$ 292,950,303
Funding Based on “Hold Harmless” provisions of <i>Education Code</i> Section 2575(g)(2)	33	\$ 659,022,070

\*Final determination of COEs funded at the LCFF Target is made at the Second Principal Apportionment.

Minimum State Aid (MSA)	
Number of COEs Receiving Additional State Aid for MSA Guarantee	21
Amount of Additional State Aid for MSA Guarantee	\$ 90,472,079
Amount of State Aid Pursuant to <i>EC</i> Section 2575.1	\$ 7,000,041

### LCFF Target Entitlement Calculation

LCFF Target Components	Number of COEs Represented	Amount
Base Grant Funding	53	\$ 190,232,980
Supplemental Grant Funding	53	59,880,770
Concentration Grant Funding	52	<u>26,763,883</u>
Alternative Education Grant (subtotal)	N/A	\$ 276,877,633
Operations Grant Funding	58	456,427,693
Add-on Funding	37	<u>30,811,508</u>
<b>Total LCFF Target Entitlement</b>	<b>N/A</b>	<b>\$ 764,116,834</b>

Alternative Education Grant Average Daily Attendance (ADA)	
Non-Juvenile Court School ADA	9,547.06
Juvenile Court School ADA	6,842.67
<b>Total County Funded ADA</b>	<b>16,389.73</b>
Unduplicated Pupil Percentage (UPP)	
Average UPP (Non-Juvenile Court School)	78.75%
Lowest non-zero UPP (Non-Juvenile Court School)	47.61%

### III. SCHOOL DISTRICT AND CHARTER SCHOOL DATA

#### LCFF Transition Entitlement Summary

LCFF Transition Components	Number of Districts	% of Districts	Amount of District Funding	Number of Charters	% of Charters	Amount of Charter Funding	Total Number of LEAs	Total Amount of Funding
LCFF Floor Entitlement	877	93%	\$ 50,137,620,143	1,145	91%	\$ 5,211,879,413	2,022	\$ 55,349,499,556
Current Year Gap Funding	877	93%	1,245,300,065	1,145	91%	133,828,626	2,022	1,379,128,691
LCFF Target Entitlement*	67	7%	73,935,176	107	9%	381,307,993	174	455,243,169
Economic Recovery Target Payments	122	13%	36,997,585	23	2%	1,263,508	145	38,261,093
State Aid for MSA Guarantee	160	17%	136,713,828	18	1%	981,292	178	137,695,120
Miscellaneous Adjustments	0	0%	-	0	0%	-	0	-
<b>Total LCFF Transition Entitlement**</b>	<b>N/A</b>	<b>N/A</b>	<b>\$ 51,630,566,797</b>	<b>N/A</b>	<b>N/A</b>	<b>\$ 5,729,260,832</b>	<b>N/A</b>	<b>\$ 57,359,827,629</b>

\*Final determination of LEAs funded at the LCFF Target is made at the Second Principal Apportionment.

\*\*Total LCFF Transition Entitlement is less than Total LCFF Funding Sources (shown on page 1) due to EPA State Aid minimum guarantee.

#### LCFF Target Entitlement Calculation

LCFF Target Components	Number of Districts	% of Districts	Amount of District Funding	Number of Charters	% of Charters	Amount of Charter Funding	Total Number of LEAs	Total Amount of Funding
Base Grant Funding*	906	96%	\$ 43,278,814,429	1,250	99.84%	\$ 5,007,372,463	2,156	\$ 48,286,186,892
Supplemental Grant Funding	944	100%	5,404,712,802	1,248	99.68%	607,672,913	2,192	6,012,385,715
Concentration Grant Funding	559	59%	3,081,558,430	713	56.95%	297,828,777	1,272	3,379,387,207
Necessary Small School (NSS) Allowance	108	11%	100,856,334	N/A	N/A	N/A	108	100,856,334
Add-on Funding	106	11%	1,320,357,755	N/A	N/A	N/A	106	1,320,357,755
<b>Total LCFF Target Entitlement</b>	<b>N/A</b>	<b>N/A</b>	<b>\$ 53,186,299,750</b>	<b>N/A</b>	<b>N/A</b>	<b>\$ 5,912,874,153</b>	<b>N/A</b>	<b>\$ 59,099,173,903</b>

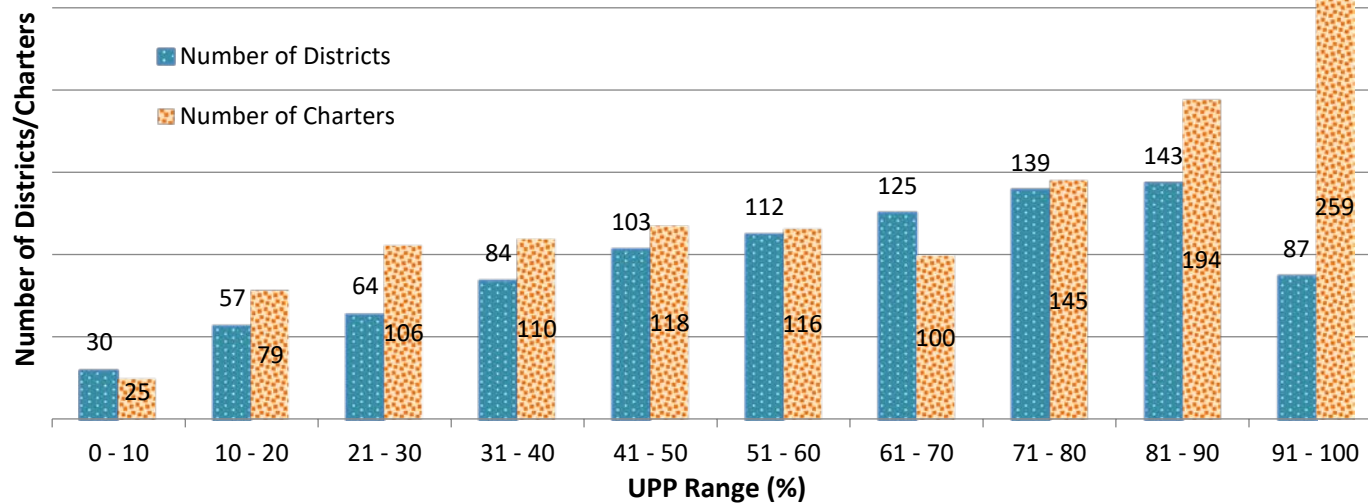
\*Some school districts are fully funded through NSS and do not receive Base Grant Funding; some charter schools have no Base Grant Funding due to zero funded ADA.

#### Total Funded ADA by Grade Span (includes NSS ADA)

LEA Type	Number of LEAs	TK/K-3	4-6	7-8	9-12	TOTAL ADA
School Districts	944	1,658,828.11	1,261,532.12	824,805.00	1,651,894.36	5,397,059.59
Charter Schools	1,252	171,421.26	131,650.85	100,813.85	215,573.87	619,459.83
<b>TOTAL</b>	<b>2,196</b>	<b>1,830,249.37</b>	<b>1,393,182.97</b>	<b>925,618.85</b>	<b>1,867,468.23</b>	<b>6,016,519.42</b>

### III. SCHOOL DISTRICT AND CHARTER SCHOOL DATA

#### Unduplicated Pupil Percentage (UPP) Ranges for School Districts and Charter Schools



UPP Range	Number of Districts	Number of Charters
0% - 10%	30	25
11% - 20%	57	79
21% - 30%	64	106
31% - 40%	84	110
41% - 50%	103	118
51% - 60%	112	116
61% - 70%	125	100
71% - 80%	139	145
81% - 90%	143	194
91% - 100%	87	259
<b>Total</b>	<b>944</b>	<b>1252</b>

#### Ten Largest School Districts (based on ADA)

School District Name	ADA	Target per ADA*	UPP
Los Angeles Unified	447,119.99	\$11,784	85.41%
San Diego Unified	101,016.52	\$10,041	62.48%
Long Beach Unified	72,793.38	\$9,887	68.40%
Fresno Unified	67,385.08	\$10,876	88.76%
Elk Grove Unified	60,431.58	\$9,054	56.35%
Corona-Norco Unified	51,326.05	\$8,882	47.49%
San Francisco Unified	50,986.91	\$10,114	62.18%
Santa Ana Unified	48,566.66	\$11,008	91.83%
Capistrano Unified	47,181.22	\$8,564	24.64%
San Bernardino City Unified	47,030.17	\$11,272	90.19%

#### Ten Largest Charter Schools (based on ADA)

Charter School Name	ADA	Target per ADA*	UPP
River Springs Charter	6,167.30	\$8,623	50.17%
Visions In Education	5,262.87	\$9,032	48.67%
Granada Hills Charter High	4,652.25	\$9,842	50.51%
Inspire Charter School - Kern	4,485.91	\$8,385	36.84%
Inspire Charter School - South	4,353.75	\$8,331	32.96%
Opportunities for Learning - Baldwin Park	4,270.49	\$11,372	79.32%
Inspire Charter School	3,916.41	\$8,411	36.34%
Capistrano Connections Academy	3,410.74	\$8,963	42.30%
El Camino Real Charter High	3,371.56	\$9,423	27.05%
Grover Cleveland Charter High	3,059.67	\$10,704	67.49%

\*LCFF Target per ADA is derived by dividing LCFF Target Entitlement by Funded ADA. This amount does not represent actual funding. Target per ADA rates vary due to differences in UPP, the distribution of ADA between the grade spans, and other components of the Target Entitlement.