

Local Control Funding Formula (LCFF) Statewide Fingertip Facts  
2023–24 Fiscal Year – First Principal Apportionment (as of February 2024)

Prepared by: CA Dept. of Education  
School Fiscal Services Division

2023–24 AT A GLANCE

**Funding Sources:**

- \$41.2 Billion from State General Fund
- \$25.5 Billion from Local Revenue
- \$13.9 Billion from Education Protection Account (EPA)



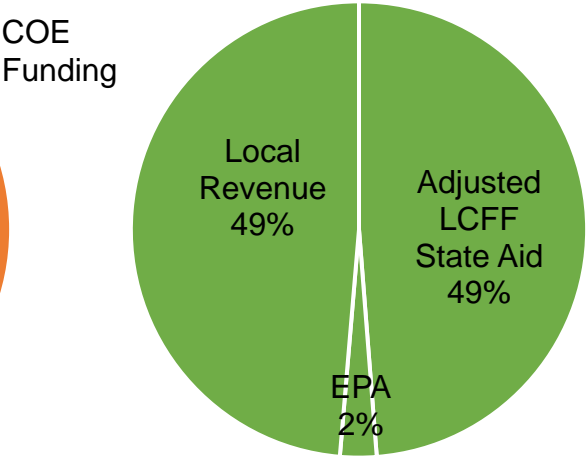
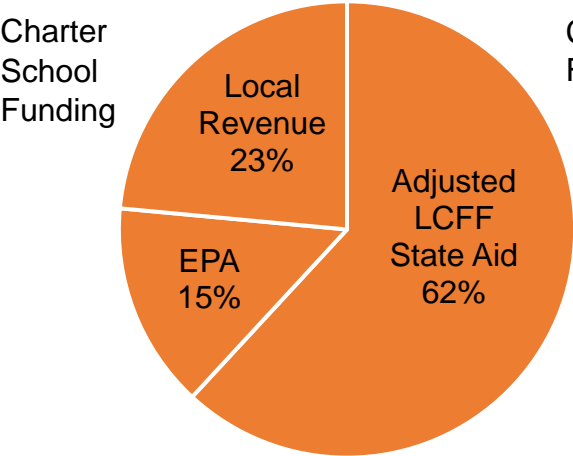
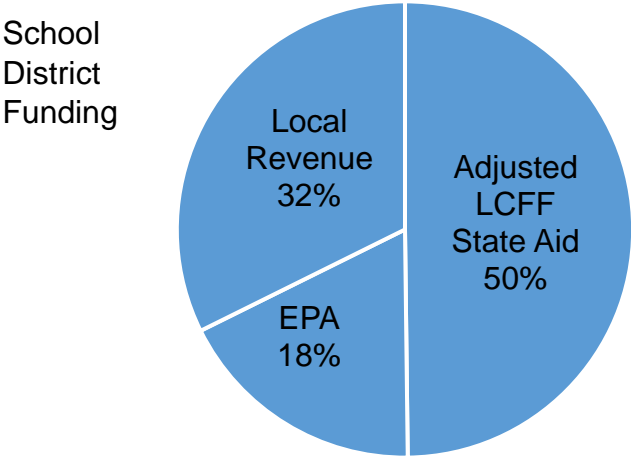
**Funding Apportioned:**

- \$70.0 Billion to School Districts
- \$9.1 Billion to Charter Schools
- \$1.5 Billion to County Offices of Education (COE)

LCFF Funding Detail

Sources	School Districts	Charter Schools	School District & Charter Subtotal	County Offices of Education	Statewide Total
LCFF State Aid before Minimum State Aid (MSA)	\$34,701,752,117	\$5,611,774,556	\$40,313,526,673	\$451,565,826	\$40,765,092,499
Additional State Aid for MSA Guarantee, Other LCFF State Aid for COEs	189,430,689	323,336	189,754,025	269,944,181	459,698,206
Adjusted LCFF State Aid (subtotal)	34,891,182,806	5,612,097,892	40,503,280,698	721,510,007	41,224,790,705
EPA State Aid	12,517,160,598	1,324,533,160	13,841,693,758	38,261,192	13,879,954,950
Local Revenue/In-lieu of Property Taxes <sup>1</sup>	22,642,737,761	2,133,073,477	24,775,811,238	720,042,951	25,495,854,189
<b>Total LCFF Funding Sources</b>	<b>\$70,051,081,165</b>	<b>\$9,069,704,529</b>	<b>\$79,120,785,694</b>	<b>\$1,479,814,150</b>	<b>\$80,600,599,844</b>

<sup>1</sup>Amounts in table and pie charts do not include excess local revenue.



## SCHOOL DISTRICT AND CHARTER SCHOOL DATA

### Summary

LCFF Entitlement Component	District Count	% of Districts	District Funding	Charter Count	% of Charters	Charter Funding	Total Count	Total Funding
Base Grant Funding <sup>2</sup>	902	96.2%	\$55,356,414,737	1,261	100.0%	\$7,495,772,726	2,164	\$62,852,187,463
Supplemental Grant Funding	938	100.0%	7,102,650,417	1,261	100.0%	938,196,933	2,200	8,040,847,350
Concentration Grant Funding	571	60.9%	5,451,139,307	785	62.3%	588,634,243	1,357	6,039,773,550
Add on Funding	109	11.6%	144,656,859	n/a	n/a	n/a	110	144,656,859
Miscellaneous Adjustments <sup>3</sup>	934	99.6%	1,752,726,034	654	51.9%	46,777,291	1588	1,799,503,325
Miscellaneous Adjustments	0	0.0%	0	0	0.0%	0	1	0
State Aid for MSA Guarantee	150	16.0%	189,430,689	8	0.6%	323,336	159	189,754,025
<b>Total LCFF Entitlement<sup>4</sup></b>	<b>n/a</b>	<b>n/a</b>	<b>\$69,997,018,043</b>	<b>n/a</b>	<b>n/a</b>	<b>\$9,069,704,529</b>	<b>n/a</b>	<b>\$79,066,722,572</b>

<sup>2</sup>Some school districts are fully funded through NSS and do not receive Base Grant Funding; some charter schools have no Base Grant Funding due to zero funded ADA.

<sup>3</sup> Adjustments for special legislation, instructional time penalties, and class size penalties.

<sup>4</sup>Total LCFF Entitlement is less than Total LCFF Funding Sources (shown on page 1) due to EPA State Aid minimum guarantee.

### Ten Largest School Districts (based on Funded ADA)

School District Name	ADA	UPP
Los Angeles Unified	375,014.79	85.67%
San Diego Unified	91,575.79	59.47%
Fresno Unified	64,859.13	88.46%
Long Beach Unified	63,768.18	64.13%
Elk Grove Unified	59,071.46	51.76%
Corona Norco Unified	49,097.20	69.75%
San Francisco Unified	47,267.96	59.66%
San Bernardino City Unified	43,837.32	91.52%
Capistrano Unified	41,768.48	32.79%
Clovis Unified	40,588.23	48.33%

### Ten Largest Charter Schools (based on Funded ADA)

Charter School Name	ADA	UPP
River Springs Charter	7,291.86	58.43%
Blue Ridge Academy	6,925.63	41.69%
Visions In Education	6,698.69	56.02%
Granada Hills Charter	5,760.86	50.75%
Mission Vista Academy	5,642.96	42.61%
Highlands Community Charter	5,583.60	99.13%
Pacific Coast Academy	5,528.75	38.79%
California Virtual Academy @ Los Angeles	5,437.54	73.38%
Heartland Charter	5,215.40	43.88%
California Connections Academy Southern California	4,921.61	52.38%

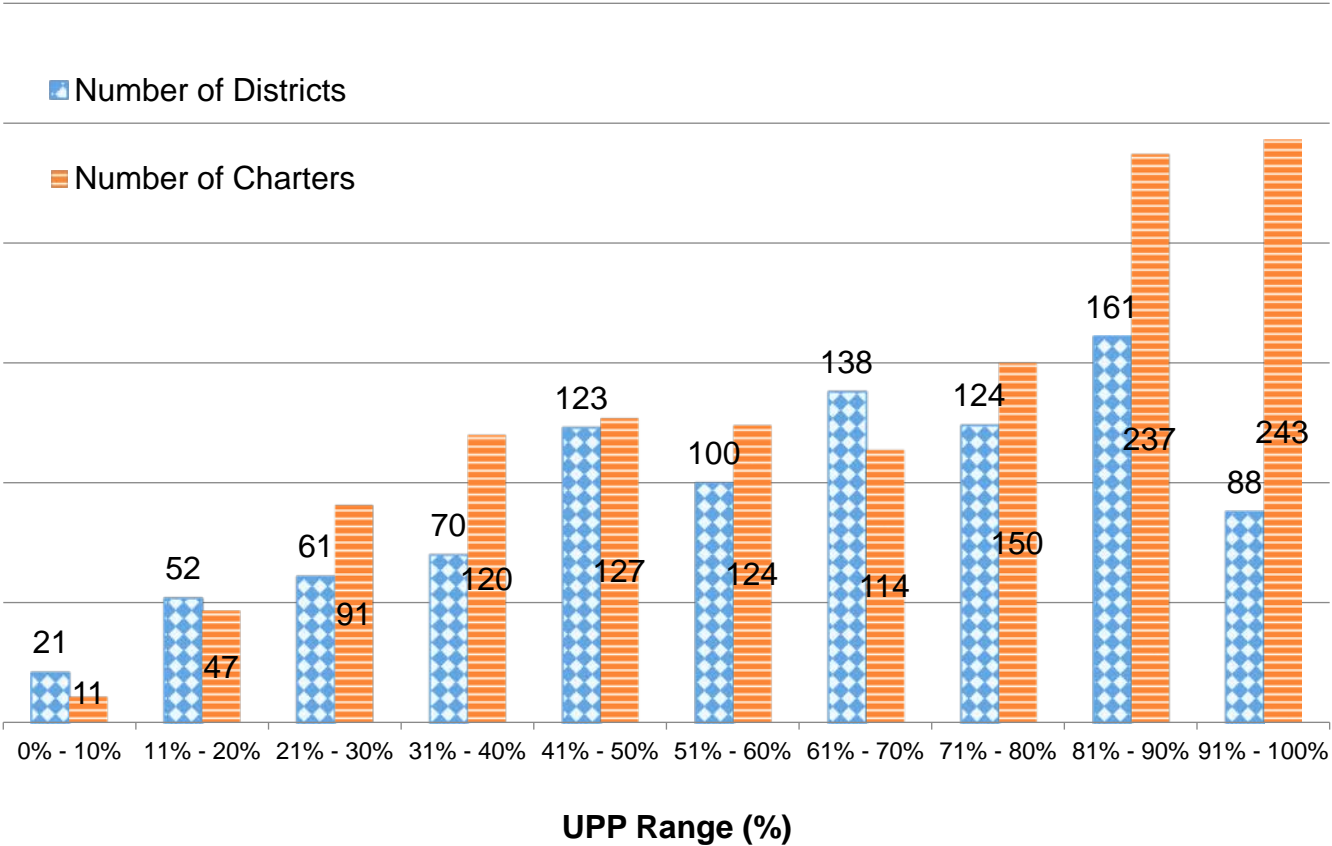
Total Funded ADA by Grade Span (includes NSS ADA)

LEA Type	Number of LEAs	Grades TK/K-3	Grades 4-6	Grades 7-8	Grades 9-12	TOTAL ADA
School Districts	938	1,497,559.62	1,132,296.06	760,772.46	1,603,771.97	4,994,400.11
Charter Schools	1,264	185,458.49	138,604.35	109,215.42	238,255.32	671,533.58
TOTAL	2,202	1,683,018.11	1,270,900.41	869,987.88	1,842,027.29	5,665,933.69

Unduplicated Pupil Percentage (UPP) Ranges for School Districts and Charter Schools

UPP Range	District Count	Charter Count
0% - 10%	21	11
11% - 20%	52	47
21% - 30%	61	91
31% - 40%	70	120
41% - 50%	123	127
51% - 60%	100	124
61% - 70%	138	114
71% - 80%	124	150
81% - 90%	161	237
91% - 100%	88	243
Total	938	1,264

Number of Districts/Charters



## COUNTY OFFICE OF EDUCATION DATA

### LCFF Funding Summary

LCFF Entitlement	Number of COEs	Amount
Funding Based on LCFF Target <sup>5</sup>	47	\$804,482,110
Funding Based on “Hold Harmless” provisions of <i>EC</i> Section 2575(g)(2)	11	\$404,657,115

<sup>5</sup>Final determination of LEAs funded at the LCFF Target is made at the Second Principal (P-2) Apportionment.

### LCFF Target Entitlement Calculation

LCFF Target Components	Number of COEs	Amount
Base Grant Funding	54	\$186,774,796
Supplemental Grant Funding	49	57,556,401
Concentration Grant Funding	49	25,005,453
Alternative Education Grant (subtotal)	n/a	269,336,650
Operations Grant Funding	58	834,320,770
Add-on Funding	56	51,799,752
<b>Total LCFF Target Entitlement</b>	<b>n/a</b>	<b>\$1,155,457,172</b>

### Alternative Education Grant Average Daily Attendance (ADA)

ADA Type	ADA
Non-Juvenile Court School ADA	7,431.80
Juvenile Court School ADA	3,960.13
<b>Total County Funded ADA</b>	<b>11,391.93</b>

### Unduplicated Pupil Percentage (UPP)

UPP Type	UPP
Average UPP (Non-Juvenile Court School)	75.03%
Lowest non-zero UPP (Non-Juvenile Court School)	49.30%

### Additional State Aid

Additional State Aid Component	Number of COEs	Amount
Additional State Aid for Minimum State Aid Guarantee	22	\$151,379,644
State Aid Pursuant to <i>EC</i> Section 2575.1	24	8,947,868
State Aid Pursuant to <i>EC</i> Section 2575.2	58	99,466,669
State Aid Pursuant to <i>EC</i> Section 2575.3	23	10,150,000
<b>Total Additional State Aid</b>	<b>n/a</b>	<b>\$269,944,181</b>