

# Local Control Funding Formula (LCFF) Statewide Fingertip Facts 2022–23 Fiscal Year – Annual Principal Apportionment (as of February 2024)

Prepared by: CA Dept. of Education  
School Fiscal Services Division

## 2022–23 AT A GLANCE

### Funding Sources:

- \$46.5 Billion from State General Fund
- \$25.0 Billion from Local Revenue
- \$4.1 Billion from Education Protection Account (EPA)



### Funding Apportioned:

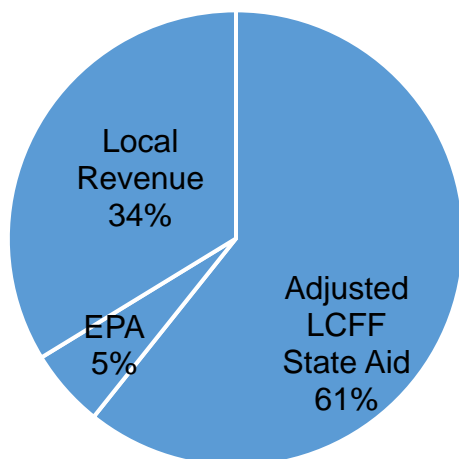
- \$66.3 Billion to School Districts
- \$8.0 Billion to Charter Schools
- \$1.3 Billion to County Offices of Education (COE)

## LCFF Funding Detail

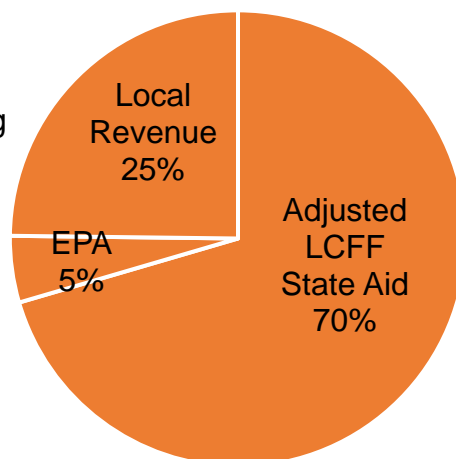
Sources	School Districts	Charter Schools	School District & Charter Subtotal	County Offices of Education	Statewide Total
LCFF State Aid before Minimum State Aid (MSA)	\$40,083,117,652	\$5,638,198,118	\$45,721,315,770	\$369,001,923	<b>\$46,090,317,693</b>
Additional State Aid for MSA Guarantee, Other LCFF State Aid for COEs	187,656,810	538,661	188,195,471	256,481,358	<b>444,676,829</b>
Adjusted LCFF State Aid (subtotal)	40,270,774,462	5,638,736,779	45,909,511,241	625,483,281	<b>46,534,994,522</b>
EPA State Aid	3,679,872,474	377,692,955	4,057,565,429	13,277,661	<b>4,070,843,090</b>
Local Revenue/In-lieu of Property Taxes <sup>1</sup>	22,374,599,962	1,985,191,151	24,359,791,113	667,993,490	<b>25,027,784,603</b>
<b>Total LCFF Funding Sources</b>	<b>\$66,325,246,898</b>	<b>\$8,001,620,885</b>	<b>\$74,326,867,783</b>	<b>\$1,306,754,432</b>	<b>\$75,633,622,215</b>

<sup>1</sup>Amounts in table and pie charts do not include excess local revenue.

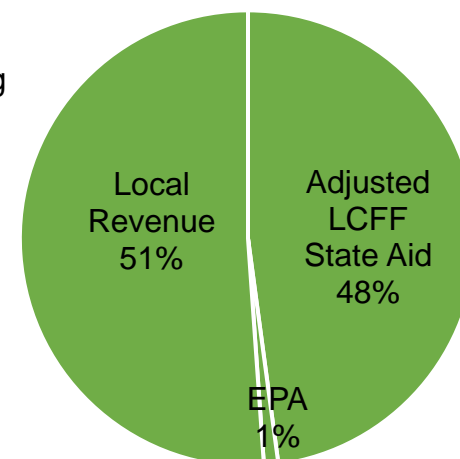
School District Funding



Charter School Funding



COE Funding



## SCHOOL DISTRICT AND CHARTER SCHOOL DATA

### Summary

LCFF Entitlement Component	District Count	% of Districts	District Funding	Charter Count	% of Charters	Charter Funding	Total Count	Total Funding
Base Grant Funding <sup>2</sup>	901	96.0%	\$52,677,666,502	1,267	100.0%	\$6,644,931,487	2,168	\$59,322,597,989
Supplemental Grant Funding	939	100.0%	6,657,373,782	1,267	100.0%	818,133,005	2,206	7,475,506,787
Concentration Grant Funding	563	60.0%	5,008,801,684	757	59.7%	505,663,574	1,320	5,514,465,258
Necessary Small School (NSS) Allowance	110	11.7%	136,196,175	n/a	n/a	n/a	110	136,196,175
Add-on Funding	934	99.5%	1,614,011,768	638	50.4%	32,339,443	1572	1,646,351,211
Miscellaneous Adjustments <sup>3</sup>	6	0.6%	-1,384,066	0	0.0%	0	6	-1,384,066
State Aid for MSA Guarantee	149	15.9%	187,656,810	13	1.0%	538,661	162	188,195,471
<b>Total LCFF Entitlement<sup>4</sup></b>	<b>n/a</b>	<b>n/a</b>	<b>\$66,280,322,655</b>	<b>n/a</b>	<b>n/a</b>	<b>\$8,001,606,170</b>	<b>n/a</b>	<b>\$74,281,928,825</b>

<sup>2</sup>Some school districts are fully funded through NSS and do not receive Base Grant Funding; some charter schools have no Base Grant Funding due to zero funded ADA.

<sup>3</sup> Adjustments for special legislation, instructional time penalties, and class size penalties.

<sup>4</sup>Total LCFF Entitlement is less than Total LCFF Funding Sources (shown on page 1) due to EPA State Aid minimum guarantee.

### Ten Largest School Districts (based on Funded ADA)

School District Name	ADA	UPP
Los Angeles Unified	398,482.64	85.97%
San Diego Unified	95,290.42	58.53%
Long Beach Unified	66,718.65	65.04%
Fresno Unified	66,444.20	88.27%
Elk Grove Unified	60,339.30	50.43%
Corona-Norco Unified	50,130.76	61.27%
San Francisco Unified	49,052.19	58.74%
San Bernardino City Unified	45,227.07	90.69%
Capistrano Unified	43,536.58	30.13%
Santa Ana Unified	42,557.15	84.46%

### Ten Largest Charter Schools (based on Funded ADA)

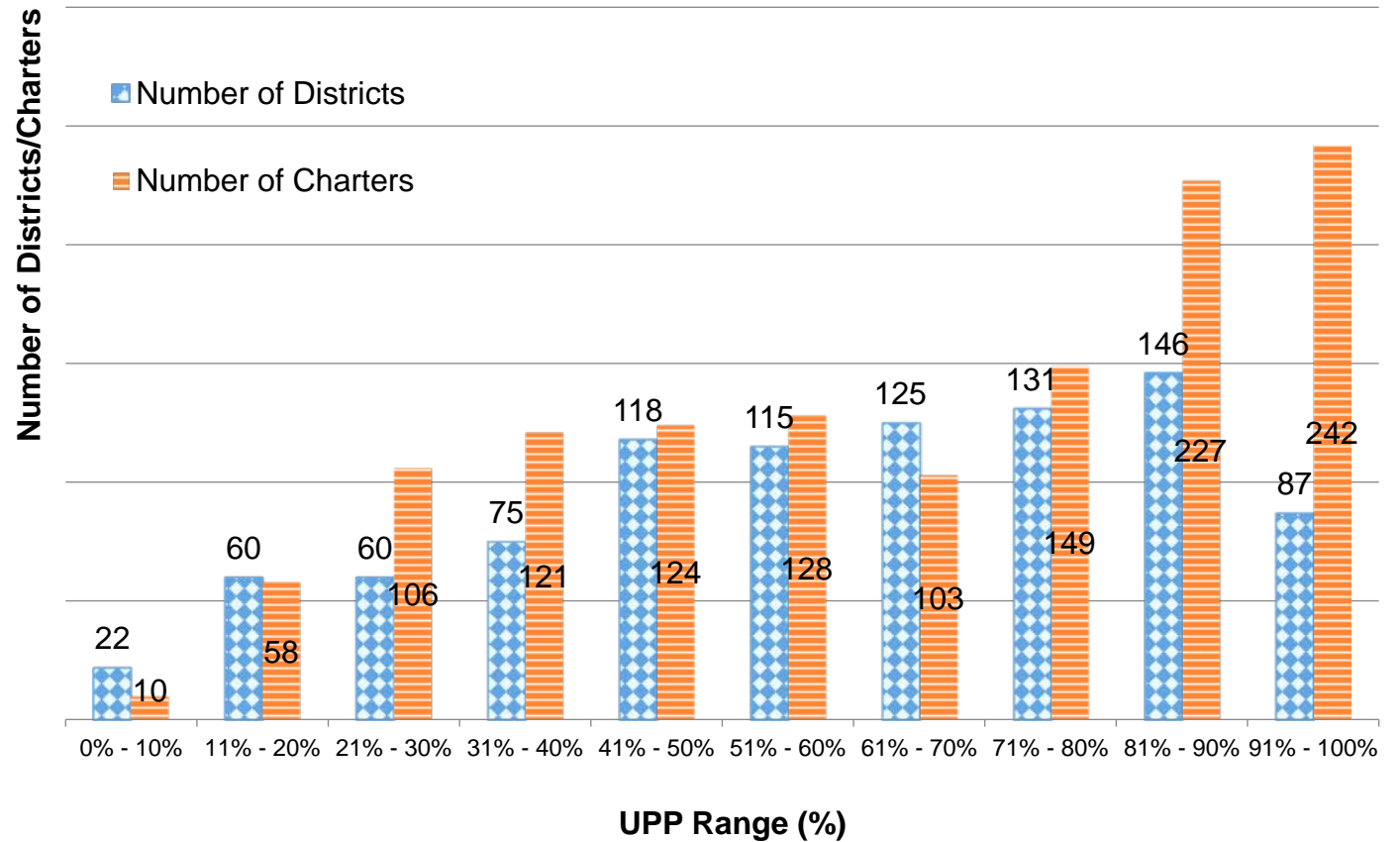
Charter School Name	ADA	UPP
River Springs Charter	6,697.13	57.60%
Blue Ridge Academy	6,650.93	42.05%
Visions In Education	6,308.40	53.15%
Granada Hills Charter	5,540.62	50.35%
California Virtual Academy @ Los Angeles	5,340.77	73.34%
Pacific Coast Academy	4,846.81	38.99%
California Connections Academy Southern California	4,829.88	48.87%
Mission Vista Academy	4,790.72	42.42%
Heartland Charter	4,624.82	42.15%
Highlands Community Charter	4,455.40	98.80%

## Total Funded ADA by Grade Span (includes NSS ADA)

LEA Type	Number of LEAs	Grades TK/K-3	Grades 4-6	Grades 7-8	Grades 9-12	TOTAL ADA
School Districts	939	1,553,555.34	1,167,765.58	791,736.45	1,633,164.24	5,146,221.61
Charter Schools	1,268	176,522.60	134,492.22	105,281.01	228,144.29	644,440.12
<b>TOTAL</b>	<b>2,207</b>	<b>1,730,077.94</b>	<b>1,302,257.80</b>	<b>897,017.46</b>	<b>1,861,308.53</b>	<b>5,790,661.73</b>

## Unduplicated Pupil Percentage (UPP) Ranges for School Districts and Charter Schools

UPP Range	District Count	Charter Count
0% - 10%	22	10
11% - 20%	60	58
21% - 30%	60	106
31% - 40%	75	121
41% - 50%	118	124
51% - 60%	115	128
61% - 70%	125	103
71% - 80%	131	149
81% - 90%	146	227
91% - 100%	87	242
<b>Total</b>	<b>939</b>	<b>1,268</b>



## COUNTY OFFICE OF EDUCATION DATA

### LCFF Funding Summary

LCFF Entitlement	Number of COEs	Amount
Funding Based on LCFF Target <sup>5</sup>	41	\$600,728,142
Funding Based on “Hold Harmless” provisions of <i>EC</i> Section 2575(g)(2)	17	\$448,949,302

<sup>5</sup>Final determination of LEAs funded at the LCFF Target is made at the Second Principal (P-2) Apportionment.

### LCFF Target Entitlement Calculation

LCFF Target Components	Number of COEs	Amount
Base Grant Funding	52	\$124,498,680
Supplemental Grant Funding	49	37,837,711
Concentration Grant Funding	49	16,164,069
Alternative Education Grant (subtotal)	n/a	178,500,460
Operations Grant Funding	58	765,609,844
Add-on Funding	36	30,684,488
<b>Total LCFF Target Entitlement</b>	<b>n/a</b>	<b>\$974,794,792</b>

### Alternative Education Grant Average Daily Attendance (ADA)

ADA Type	ADA
Non-Juvenile Court School ADA	6,061.29
Juvenile Court School ADA	2,971.52
<b>Total County Funded ADA</b>	<b>9,032.81</b>

### Unduplicated Pupil Percentage (UPP)

UPP Type	UPP
Average UPP (Non-Juvenile Court School)	76.40%
Lowest non-zero UPP (Non-Juvenile Court School)	45.20%

### Additional State Aid

Additional State Aid Component	Number of COEs	Amount
Additional State Aid for Minimum State Aid Guarantee	24	\$161,957,576
State Aid Pursuant to <i>EC</i> Section 2575.1	24	8,290,451
State Aid Pursuant to <i>EC</i> Section 2575.2	58	86,233,331
<b>Total Additional State Aid</b>	<b>n/a</b>	<b>\$256,481,358</b>