

Local Control Funding Formula (LCFF) Statewide Fingertip Facts 2025–26 Fiscal Year – Second Principal Apportionment (as of June 2026)

Prepared by: CA Dept. of Education
School Fiscal Services Division

2025–26 AT A GLANCE

Funding Sources:

- \$39.3 Billion from State General Fund
- \$28.0 Billion from Local Revenue
- \$14.7 Billion from Education Protection Account (EPA)

\$82.0 Billion

Funding Apportioned:

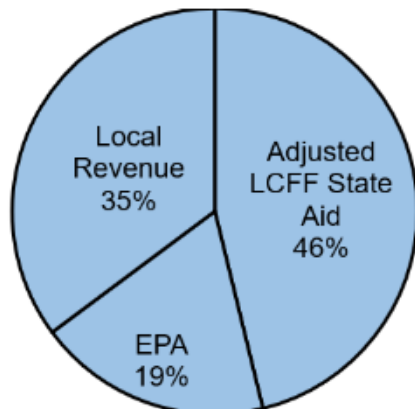
- \$70.7 Billion to School Districts
- \$9.8 Billion to Charter Schools
- \$1.5 Billion to County Offices of Education (COE)

LCFF Funding Detail

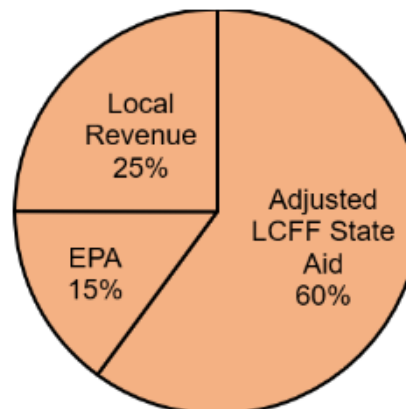
Sources	School Districts	Charter Schools	School District & Charter Subtotal	County Offices of Education	Statewide Total
LCFF State Aid before Minimum State Aid (MSA)	\$32,410,303,278	\$5,904,777,452	\$38,315,080,730	\$413,211,997	\$38,728,292,727
Additional State Aid for MSA Guarantee, Other LCFF State Aid for COEs	256,057,021	295,030	256,352,051	309,154,890	565,506,941
Adjusted LCFF State Aid (subtotal)	32,666,360,299	5,905,072,482	38,571,432,781	722,366,887	39,293,799,668
EPA State Aid	13,195,821,792	1,491,778,327	14,687,600,119	30,114,945	14,717,715,064
Local Revenue/In-lieu of Property Taxes ¹	24,867,135,145	2,412,823,183	27,279,958,328	756,210,023	28,036,168,351
Total LCFF Funding Sources	\$70,729,317,236	\$9,809,673,992	\$80,538,991,228	\$1,508,691,855	\$82,047,683,083

¹Amounts in table and pie charts do not include excess local revenue.

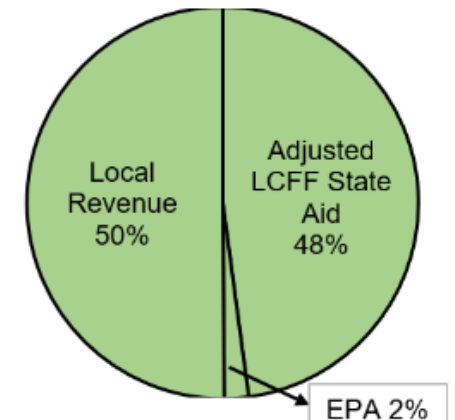
School District Funding



Charter School Funding



COE Funding



SCHOOL DISTRICT AND CHARTER SCHOOL DATA

Summary

LCFF Entitlement Component	District Count	% of Districts	District Funding	Charter Count	% of Charters	Charter Funding	Total Count	Total Funding
Base Grant Funding ²	897	95.8%	\$54,855,805,741	1,244	100.0%	\$8,014,522,203	2,141	\$62,870,327,944
Supplemental Grant Funding	936	100.0%	7,226,962,413	1,243	99.9%	1,009,483,124	2,179	8,236,445,537
Concentration Grant Funding	588	62.8%	5,784,187,630	801	64.4%	641,677,133	1,389	6,425,864,763
Necessary Small School (NSS) Allowance	111	11.9%	151,965,412	n/a	n/a	n/a	111	151,965,412
Add-on Funding	930	99.4%	2,388,634,318	675	54.3%	143,696,502	1607	2,532,330,820
Miscellaneous Adjustments ³	6	0.6%	-1,661,472	0	0.0%	0	6	-1,661,472
State Aid for MSA Guarantee	157	16.8%	256,057,021	4	0.3%	295,030	161	256,352,051
Total LCFF Entitlement⁴	n/a	n/a	\$70,661,951,063	n/a	n/a	\$9,809,673,992	n/a	\$80,471,625,055

²Some school districts are fully funded through NSS and do not receive Base Grant Funding; some charter schools have no Base Grant Funding due to zero funded ADA.

³ Adjustments for special legislation, instructional time penalties, and class size penalties.

⁴Total LCFF Entitlement is less than Total LCFF Funding Sources (shown on page 1) due to EPA State Aid minimum guarantee.

Ten Largest School Districts (based on Funded ADA)

School District Name	ADA	UPP
Los Angeles Unified	338,657.73	86.30%
San Diego Unified	88,461.83	60.54%
Fresno Unified	62,034.63	88.91%
Elk Grove Unified	60,419.42	60.78%
Long Beach Unified	58,511.21	63.40%
Corona-Norco Unified	47,419.67	72.10%
San Francisco Unified	45,359.63	59.99%
Clovis Unified	41,114.52	49.74%
San Bernardino City Unified	41,039.08	88.87%
Kern High	39,755.79	80.13%

Ten Largest Charter Schools (based on Funded ADA)

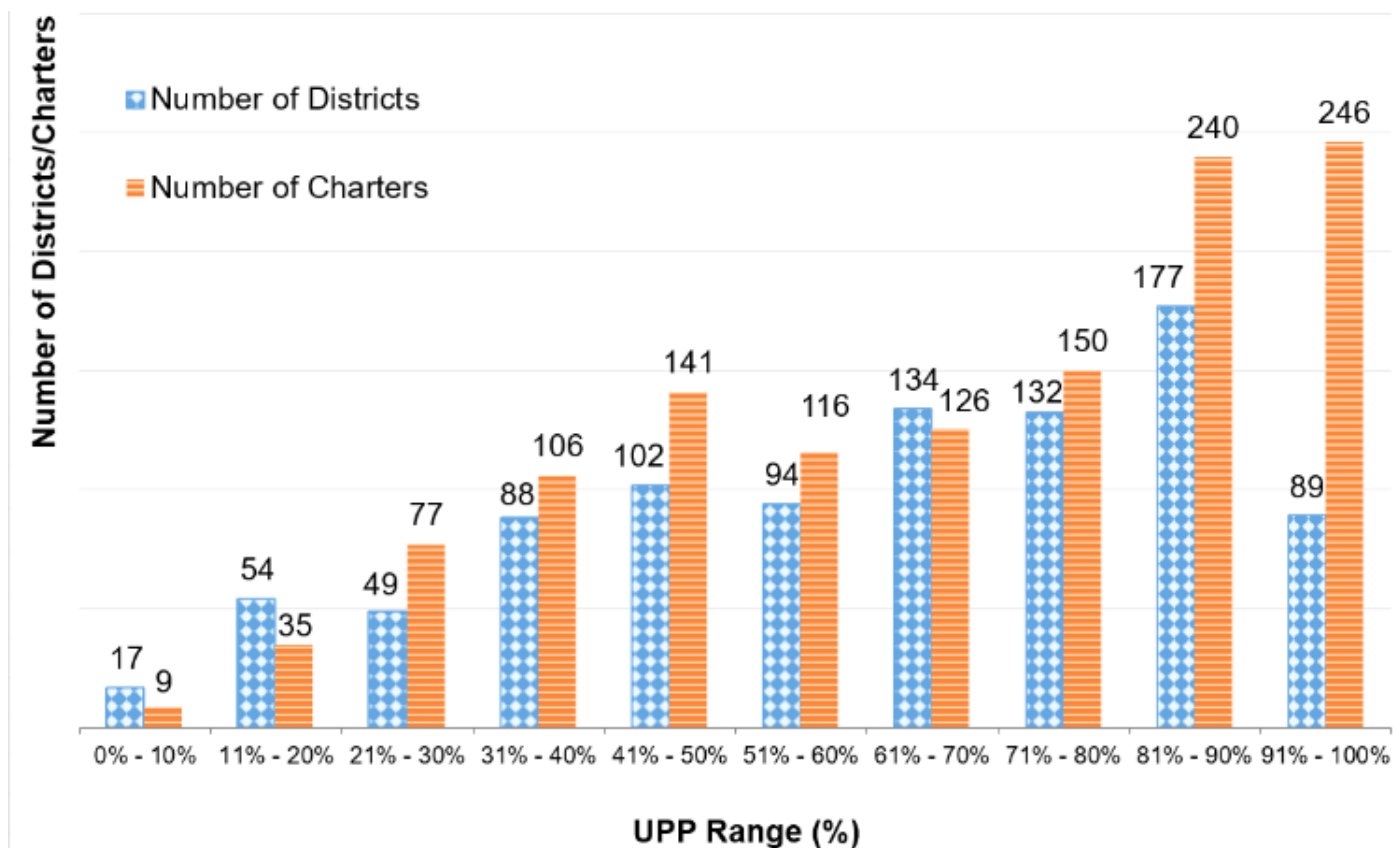
Charter School Name	ADA	UPP
River Springs Charter	8,277.66	59.71%
Pacific Coast Academy	8,059.00	37.04%
Visions In Education	7,727.56	58.78%
Mission Vista Academy	7,676.56	42.02%
Blue Ridge Academy	7,236.29	39.70%
Heartland Charter	7,022.94	43.17%
Cabrillo Point Academy	6,461.39	32.64%
California Virtual Academy @ Los Angeles	5,986.92	75.27%
Granada Hills Charter	5,850.51	49.31%
Granite Mountain Charter	4,707.43	44.04%

Total Funded ADA by Grade Span (includes NSS ADA)

LEA Type	Number of LEAs	Grades TK/K-3	Grades 4-6	Grades 7-8	Grades 9-12	TOTAL ADA
School Districts	936	1,457,311.45	1,079,889.80	722,887.12	1,527,417.05	4,787,505.42
Charter Schools	1,246	202,641.92	144,799.72	114,420.20	234,271.75	696,133.59
TOTAL	2,182	1,659,953.37	1,224,689.52	837,307.32	1,761,688.80	5,483,639.01

Unduplicated Pupil Percentage (UPP) Ranges for School Districts and Charter Schools

UPP Range	District Count	Charter Count
0% - 10%	17	9
11% - 20%	54	35
21% - 30%	49	77
31% - 40%	88	106
41% - 50%	102	141
51% - 60%	94	116
61% - 70%	134	126
71% - 80%	132	150
81% - 90%	177	240
91% - 100%	89	246
Total	936	1,246



COUNTY OFFICE OF EDUCATION DATA

LCFF Funding Summary

LCFF Entitlement	Number of COEs	Amount
Funding Based on LCFF Target ⁵	47	\$787,093,673
Funding Based on “Hold Harmless” provisions of <i>EC</i> Section 2575(g)(2)	11	\$411,830,026

⁵Final determination of LEAs funded at the LCFF Target is made at the Second Principal (P-2) Apportionment.

LCFF Target Entitlement Calculation

LCFF Target Components	Number of COEs	Amount
Base Grant Funding	53	\$156,487,244
Supplemental Grant Funding	49	48,241,833
Concentration Grant Funding	48	21,115,791
Alternative Education Grant (subtotal)	n/a	225,844,868
Operations Grant Funding	58	856,054,443
Add-on Funding	57	52,723,867
Total LCFF Target Entitlement	n/a	\$1,134,623,178

Alternative Education Grant Average Daily Attendance (ADA)

ADA Type	ADA
Non-Juvenile Court School ADA	6,141.30
Juvenile Court School ADA	3,089.94
Total County Funded ADA	9,231.24

Unduplicated Pupil Percentage (UPP)

UPP Type	UPP
Average UPP (Non-Juvenile Court School)	76.23%
Lowest non-zero UPP (Non-Juvenile Court School)	46.89%

Additional State Aid

Additional State Aid Component	Number of COEs	Amount
Additional State Aid for Minimum State Aid Guarantee	24	\$188,628,001
State Aid Pursuant to <i>EC</i> Section 2575.1	24	9,226,890
State Aid Pursuant to <i>EC</i> Section 2575.2	58	94,266,666
State Aid Pursuant to <i>EC</i> Section 2575.3	27	17,033,333
Total Additional State Aid	n/a	\$309,154,890