

Local Control Funding Formula (LCFF) Statewide Fingertip Facts 2017–18 Fiscal Year - Second Principal Apportionment (as of June 2018)

Prepared by: CA Dept. of Education
School Fiscal Services Division

2017–18 AT A GLANCE

Funding Sources:

- \$32.8 Billion from State General Fund
- \$18.6 Billion from Local Revenue
- \$6.8 Billion from Education Protection Account (EPA)

**\$58.2
Billion**

Funding Apportioned:

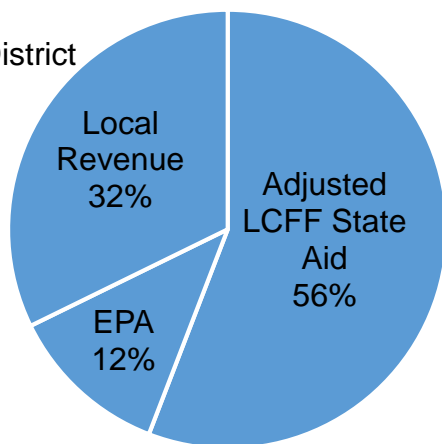
- \$51.5 Billion to School Districts
- \$5.7 Billion to Charter Schools
- \$1.0 Billion to County Offices of Education (COE)

LCFF Funding Detail

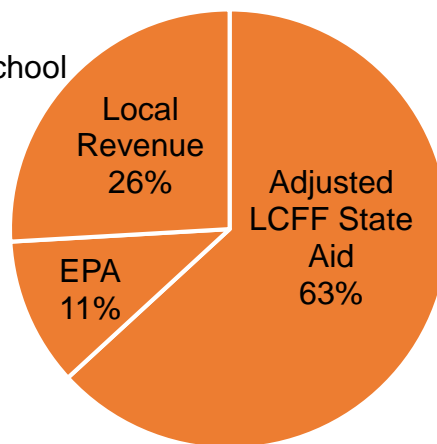
Sources	School Districts	Charter Schools	School District & Charter Subtotal	County Offices of Education	Statewide Total
LCFF State Aid before Minimum State Aid (MSA)	\$28,622,896,856	\$3,594,835,391	\$32,217,732,247	\$312,724,064	\$32,530,456,311
Additional State Aid for MSA Guarantee	<u>152,704,161</u>	<u>1,040,537</u>	<u>153,744,698</u>	<u>112,716,177</u>	266,460,875
Adjusted LCFF State Aid (subtotal)	28,775,601,017	3,595,875,928	32,371,476,945	425,440,241	32,796,917,186
EPA State Aid	6,133,973,659	621,593,026	6,755,566,685	53,496,627	6,809,063,312
Local Revenue/In-Lieu of Property Taxes ¹	<u>16,615,200,306</u>	<u>1,474,868,023</u>	<u>18,090,068,329</u>	<u>555,614,344</u>	<u>18,645,682,673</u>
Total LCFF Funding Sources	\$51,524,774,982	\$5,692,336,977	\$57,217,111,959	\$1,034,551,212	\$58,251,663,171

¹Amounts in table and pie charts do not include excess local revenue.

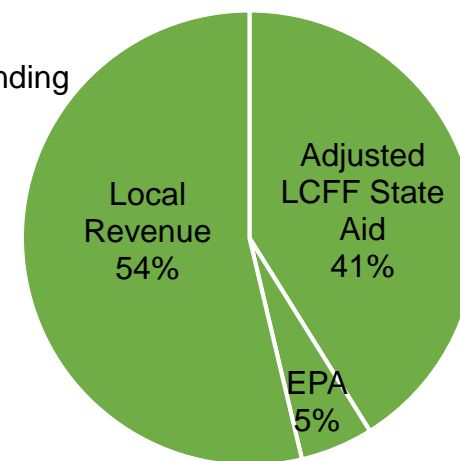
School District Funding



Charter School Funding



COE Funding



Determination of Statewide Remaining Need for LCFF Full Transition

Remaining Need Calculation ²	School Districts	Charter Schools	Total
LCFF Target Entitlement	\$52,976,575,686	\$5,871,850,554	\$58,848,426,240
Less LCFF Floor, OR LCFF Target Amount for LEAs Funded at the Target ³	-50,016,659,306	-5,553,034,657	-55,569,693,963
Less Current Year Gap Funding (Based on Statewide Gap Rate of 42.97%)	-1,271,770,771	-136,983,841	-1,408,754,612
Statewide Remaining Need	\$1,688,145,609	\$181,832,056	\$1,869,977,665

²Remaining Need Calculation is not applicable to COEs; as of 2014-15, all COEs are either funded at the Target or above based on “hold harmless” provisions of *Education Code (EC) Section 2575(g)(2)*.

COUNTY OFFICE OF EDUCATION DATA

LCFF Funding Summary

LCFF Entitlement	Number of COEs	Amount
Funding Based on LCFF Target ³	25	\$271,047,163
Funding Based on “Hold Harmless” provisions of <i>EC Section 2575(g)(2)</i>	33	\$650,112,876

³Final determination of LEAs funded at the LCFF Target is made at the Second Principal (P-2) Apportionment.

LCFF Target Entitlement Calculation

LCFF Target Components	Number of COEs	Amount
Base Grant Funding	53	\$163,321,126
Supplemental Grant Funding	53	51,268,305
Concentration Grant Funding	52	<u>22,858,085</u>
Alternative Education Grant (subtotal)	n/a	\$237,447,516
Operations Grant Funding	58	454,572,760
Add-on Funding	37	<u>30,846,272</u>
Total LCFF Target Entitlement	n/a	\$722,866,548

Alternative Education Grant Average Daily Attendance (ADA)

Non-Juvenile Court School ADA	8,343.06
Juvenile Court School ADA	5,728.05
Total County Funded ADA	14,071.11

Unduplicated Pupil Percentage (UPP)

Average UPP (Non-Juvenile Court School)	78.75%
Lowest non-zero UPP (Non-Juvenile Court School)	47.61%

Additional State Aid

Number of COEs Receiving Additional State Aid for Minimum State Aid Guarantee	22
Amount of Additional State Aid for Minimum State Aid Guarantee	\$112,716,177
Number of COEs Receiving State Aid Pursuant to <i>EC Section 2575.1</i>	24
Amount of State Aid Pursuant to <i>EC Section 2575.1</i>	\$7,000,041

SCHOOL DISTRICT AND CHARTER SCHOOL DATA

LCFF Transition Entitlement Summary

LCFF Transition Components	District Count	% of Districts	District Funding	Charter Count	% of Charters	Charter Funding	Total Count	Total Funding
LCFF Floor Entitlement	877	93%	\$49,942,855,480	1,146	91%	\$5,157,564,754	2,023	\$55,100,420,234
Current Year Gap Funding	877	93%	1,271,770,771	1,146	91%	136,983,841	2,023	1,408,754,612
LCFF Target Entitlement ⁴	67	7%	73,803,826	105	8%	395,469,903	172	469,273,729
Economic Recovery Target Payments	122	13%	36,997,585	23	2%	1,263,508	145	38,261,093
State Aid for MSA Guarantee	163	17%	152,704,161	18	1%	1,040,537	181	153,744,698
Miscellaneous Adjustments	4	0%	-327,456	0	n/a	0	4	-327,456
Total LCFF Transition Entitlement⁵	n/a	n/a	\$51,477,804,367	n/a	n/a	\$5,692,322,543	n/a	\$57,170,126,910

⁴Final determination of LEAs funded at the LCFF Target is made at the P-2 Apportionment.

⁵Total LCFF Transition Entitlement is less than Total LCFF Funding Sources (shown on page 1) due to EPA State Aid minimum guarantee.

LCFF Target Entitlement Summary

LCFF Target Components	District Count	% of Districts	District Funding	Charter Count	% of Charters	Charter Funding	Total Count	Total Funding
Base Grant Funding ⁶	905	96%	\$43,083,364,252	1,251	99.8%	\$4,970,277,854	2,156	\$48,053,642,106
Supplemental Grant Funding	944	100%	5,387,795,545	1,250	99.7%	604,902,558	2,194	5,992,698,103
Concentration Grant Funding	559	59%	3,082,115,881	717	57.2%	296,670,142	1,276	3,378,786,023
Necessary Small School (NSS) Allowance	109	12%	102,942,253	n/a	n/a	n/a	109	102,942,253
Add-on Funding	915	97%	1,320,357,755	n/a	n/a	n/a	915	1,320,357,755
Total LCFF Target Entitlement	n/a	n/a	\$52,976,575,686	n/a	n/a	\$5,871,850,554	n/a	\$58,848,426,240

⁶Some school districts are fully funded through NSS and do not receive Base Grant Funding; some charter schools have no Base Grant Funding due to zero funded ADA.

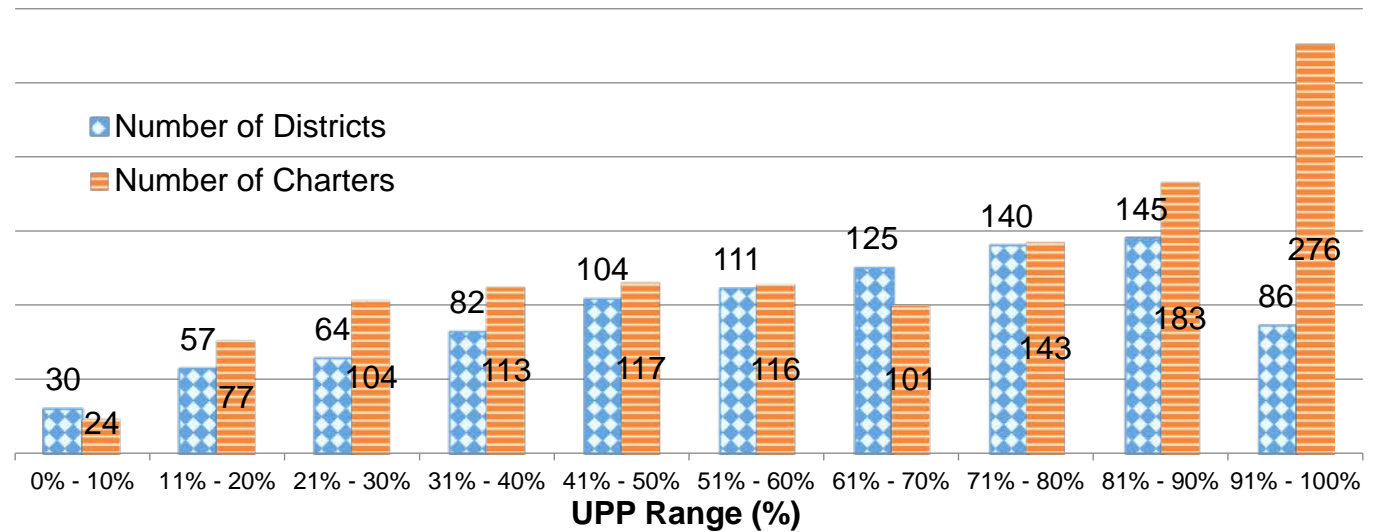
Total Funded ADA by Grade Span (includes NSS ADA)

LEA Type	Number of LEAs	TK/K-3	Grades 4-6	Grades 6-8	Grades 9-12	TOTAL ADA
School Districts	944	1,657,896.97	1,255,201.81	820,016.40	1,640,256.58	5,373,371.76
Charter Schools	1,254	170,786.45	130,586.53	100,373.88	213,227.38	614,974.24
TOTAL	2,198	1,828,683.42	1,385,788.34	920,390.28	1,853,483.96	5,988,346.00

Unduplicated Pupil Percentage (UPP) Ranges for School Districts and Charter Schools

UPP Range	District Count	Charter Count
0% - 10%	30	24
11% - 20%	57	77
21% - 30%	64	104
31% - 40%	82	113
41% - 50%	104	117
51% - 60%	111	116
61% - 70%	125	101
71% - 80%	140	143
81% - 90%	145	183
91% - 100%	86	276
Total	944	1254

Number of Districts/Charters



Ten Largest School Districts (based on ADA)

School District Name	ADA	Target per ADA ⁷	UPP
Los Angeles Unified	442,951.17	\$11,814	85.49%
San Diego Unified	100,575.64	\$10,050	62.50%
Long Beach Unified	72,811.54	\$9,887	68.40%
Fresno Unified	66,711.21	\$10,882	88.91%
Elk Grove Unified	59,973.95	\$9,113	57.56%
Corona-Norco Unified	51,298.99	\$8,875	47.50%
San Francisco Unified	50,770.91	\$10,107	62.19%
Santa Ana Unified	48,545.13	\$11,008	91.83%
Capistrano Unified	46,908.22	\$8,560	24.64%
San Bernardino City Unified	46,837.76	\$11,264	90.13%

Ten Largest Charter Schools (based on ADA)

Charter School Name	ADA	Target per ADA ⁷	UPP
River Springs Charter	6,187.93	\$8,624	50.17%
Visions In Education	5,242.00	\$9,041	49.14%
Granada Hills Charter High	4,597.71	\$9,842	50.52%
Inspire Charter School - Kern	4,433.69	\$8,386	36.84%
Inspire Charter School - South	4,419.13	\$8,332	32.96%
Opportunities for Learning - Baldwin Park	4,192.17	\$11,193	76.44%
Capistrano Connections Academy	3,504.87	\$8,957	42.29%
Inspire Charter School	3,408.65	\$8,395	36.34%
El Camino Real Charter High	3,316.99	\$9,423	27.05%
Grover Cleveland Charter High	3,010.34	\$10,701	67.44%

⁷LCFF Target per ADA is derived by dividing LCFF Target Entitlement by Funded ADA. This amount does not represent actual funding. Target per ADA rates vary due to differences in UPP, the distribution of ADA between the grade spans, and other components of the Target Entitlement.