

Local Control Funding Formula (LCFF) Statewide Fingertip Facts
2022–23 Fiscal Year – Annual Principal Apportionment (as of February 2024)

Prepared by: CA Dept. of Education
School Fiscal Services Division

2022–23 AT A GLANCE

Funding Sources:

- \$46.5 Billion from State General Fund
- \$25.0 Billion from Local Revenue
- \$4.1 Billion from Education Protection Account (EPA)



Funding Apportioned:

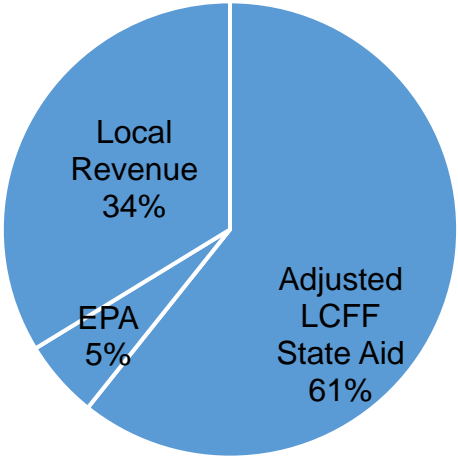
- \$66.3 Billion to School Districts
- \$8.0 Billion to Charter Schools
- \$1.3 Billion to County Offices of Education (COE)

LCFF Funding Detail

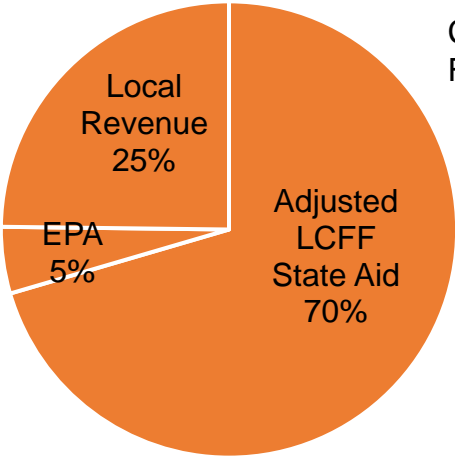
Sources	School Districts	Charter Schools	School District & Charter Subtotal	County Offices of Education	Statewide Total
LCFF State Aid before Minimum State Aid (MSA)	\$40,083,117,652	\$5,638,198,118	\$45,721,315,770	\$369,001,923	\$46,090,317,693
Additional State Aid for MSA Guarantee, Other LCFF State Aid for COEs	187,656,810	538,661	188,195,471	256,481,358	444,676,829
Adjusted LCFF State Aid (subtotal)	40,270,774,462	5,638,736,779	45,909,511,241	625,483,281	46,534,994,522
EPA State Aid	3,679,872,474	377,692,955	4,057,565,429	13,277,661	4,070,843,090
Local Revenue/In-lieu of Property Taxes ¹	22,374,599,962	1,985,191,151	24,359,791,113	667,993,490	25,027,784,603
Total LCFF Funding Sources	\$66,325,246,898	\$8,001,620,885	\$74,326,867,783	\$1,306,754,432	\$75,633,622,215

¹Amounts in table and pie charts do not include excess local revenue.

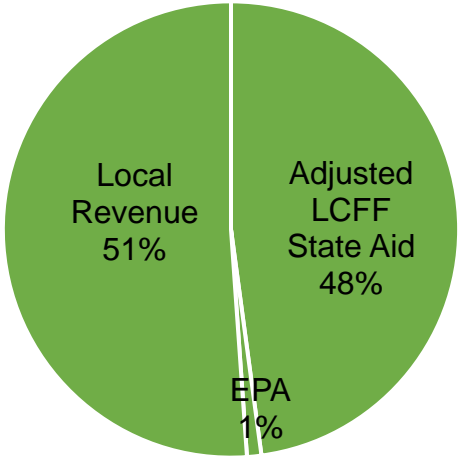
School District Funding



Charter School Funding



COE Funding



SCHOOL DISTRICT AND CHARTER SCHOOL DATA

Summary

LCFF Entitlement Component	District Count	% of Districts	District Funding	Charter Count	% of Charters	Charter Funding	Total Count	Total Funding
Base Grant Funding ²	901	96.0%	\$52,677,666,502	1,267	100.0%	\$6,644,931,487	2,168	\$59,322,597,989
Supplemental Grant Funding	939	100.0%	6,657,373,782	1,267	100.0%	818,133,005	2,206	7,475,506,787
Concentration Grant Funding	563	60.0%	5,008,801,684	757	59.7%	505,663,574	1,320	5,514,465,258
Necessary Small School (NSS) Allowance	110	11.7%	136,196,175	n/a	n/a	n/a	110	136,196,175
Add-on Funding	934	99.5%	1,614,011,768	638	50.4%	32,339,443	1572	1,646,351,211
Miscellaneous Adjustments ³	6	0.6%	-1,384,066	0	0.0%	0	6	-1,384,066
State Aid for MSA Guarantee	149	15.9%	187,656,810	13	1.0%	538,661	162	188,195,471
Total LCFF Entitlement⁴	n/a	n/a	\$66,280,322,655	n/a	n/a	\$8,001,606,170	n/a	\$74,281,928,825

²Some school districts are fully funded through NSS and do not receive Base Grant Funding; some charter schools have no Base Grant Funding due to zero funded ADA.

³ Adjustments for special legislation, instructional time penalties, and class size penalties.

⁴Total LCFF Entitlement is less than Total LCFF Funding Sources (shown on page 1) due to EPA State Aid minimum guarantee.

Ten Largest School Districts (based on Funded ADA)

School District Name	ADA	UPP
Los Angeles Unified	398,482.64	85.97%
San Diego Unified	95,290.42	58.53%
Long Beach Unified	66,718.65	65.04%
Fresno Unified	66,444.20	88.27%
Elk Grove Unified	60,339.30	50.43%
Corona-Norco Unified	50,130.76	61.27%
San Francisco Unified	49,052.19	58.74%
San Bernardino City Unified	45,227.07	90.69%
Capistrano Unified	43,536.58	30.13%
Santa Ana Unified	42,557.15	84.46%

Ten Largest Charter Schools (based on Funded ADA)

Charter School Name	ADA	UPP
River Springs Charter	6,697.13	57.60%
Blue Ridge Academy	6,650.93	42.05%
Visions In Education	6,308.40	53.15%
Granada Hills Charter	5,540.62	50.35%
California Virtual Academy @ Los Angeles	5,340.77	73.34%
Pacific Coast Academy	4,846.81	38.99%
California Connections Academy Southern California	4,829.88	48.87%
Mission Vista Academy	4,790.72	42.42%
Heartland Charter	4,624.82	42.15%
Highlands Community Charter	4,455.40	98.80%

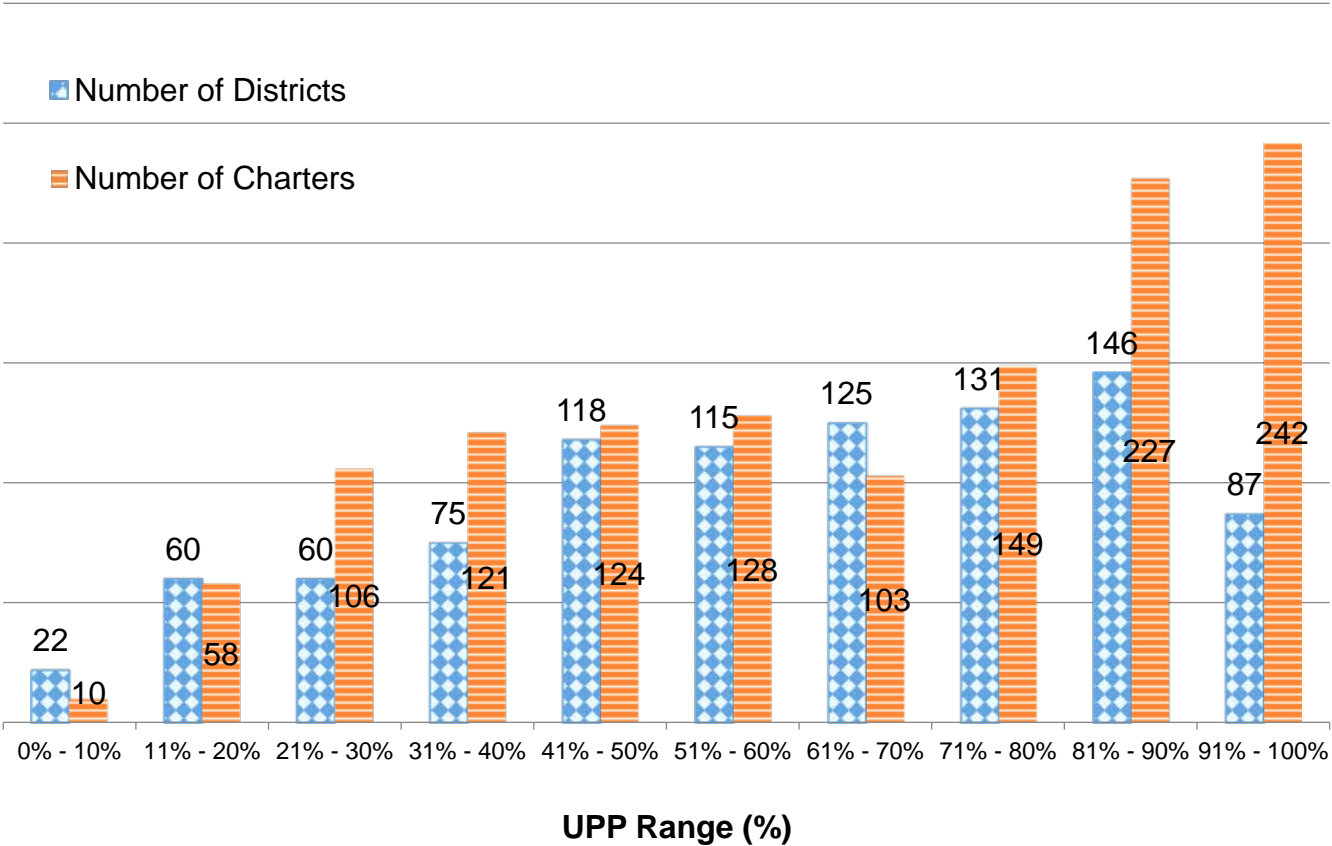
Total Funded ADA by Grade Span (includes NSS ADA)

LEA Type	Number of LEAs	Grades TK/K-3	Grades 4-6	Grades 7-8	Grades 9-12	TOTAL ADA
School Districts	939	1,553,555.34	1,167,765.58	791,736.45	1,633,164.24	5,146,221.61
Charter Schools	1,268	176,522.60	134,492.22	105,281.01	228,144.29	644,440.12
TOTAL	2,207	1,730,077.94	1,302,257.80	897,017.46	1,861,308.53	5,790,661.73

Unduplicated Pupil Percentage (UPP) Ranges for School Districts and Charter Schools

UPP Range	District Count	Charter Count
0% - 10%	22	10
11% - 20%	60	58
21% - 30%	60	106
31% - 40%	75	121
41% - 50%	118	124
51% - 60%	115	128
61% - 70%	125	103
71% - 80%	131	149
81% - 90%	146	227
91% - 100%	87	242
Total	939	1,268

Number of Districts/Charters



COUNTY OFFICE OF EDUCATION DATA

LCFF Funding Summary

LCFF Entitlement	Number of COEs	Amount
Funding Based on LCFF Target ⁵	41	\$600,728,142
Funding Based on “Hold Harmless” provisions of <i>EC</i> Section 2575(g)(2)	17	\$448,949,302

⁵Final determination of LEAs funded at the LCFF Target is made at the Second Principal (P-2) Apportionment.

LCFF Target Entitlement Calculation

LCFF Target Components	Number of COEs	Amount
Base Grant Funding	52	\$124,498,680
Supplemental Grant Funding	49	37,837,711
Concentration Grant Funding	49	16,164,069
Alternative Education Grant (subtotal)	n/a	178,500,460
Operations Grant Funding	58	765,609,844
Add-on Funding	36	30,684,488
Total LCFF Target Entitlement	n/a	\$974,794,792

Alternative Education Grant Average Daily Attendance (ADA)

ADA Type	ADA
Non-Juvenile Court School ADA	6,061.29
Juvenile Court School ADA	2,971.52
Total County Funded ADA	9,032.81

Unduplicated Pupil Percentage (UPP)

UPP Type	UPP
Average UPP (Non-Juvenile Court School)	76.40%
Lowest non-zero UPP (Non-Juvenile Court School)	45.20%

Additional State Aid

Additional State Aid Component	Number of COEs	Amount
Additional State Aid for Minimum State Aid Guarantee	24	\$161,957,576
State Aid Pursuant to <i>EC</i> Section 2575.1	24	8,290,451
State Aid Pursuant to <i>EC</i> Section 2575.2	58	86,233,331
Total Additional State Aid	n/a	\$256,481,358