

Local Control Funding Formula (LCFF) Statewide Fingertip Facts 2020–21 Fiscal Year – Second Principal Apportionment (as of June 2021)

Prepared by: CA Dept. of Education
School Fiscal Services Division

2020–21 AT A GLANCE

Funding Sources:

- \$29.6 Billion from State General Fund
- \$21.3 Billion from Local Revenue
- \$12.6 Billion from Education Protection Account (EPA)

**\$63.5
Billion**

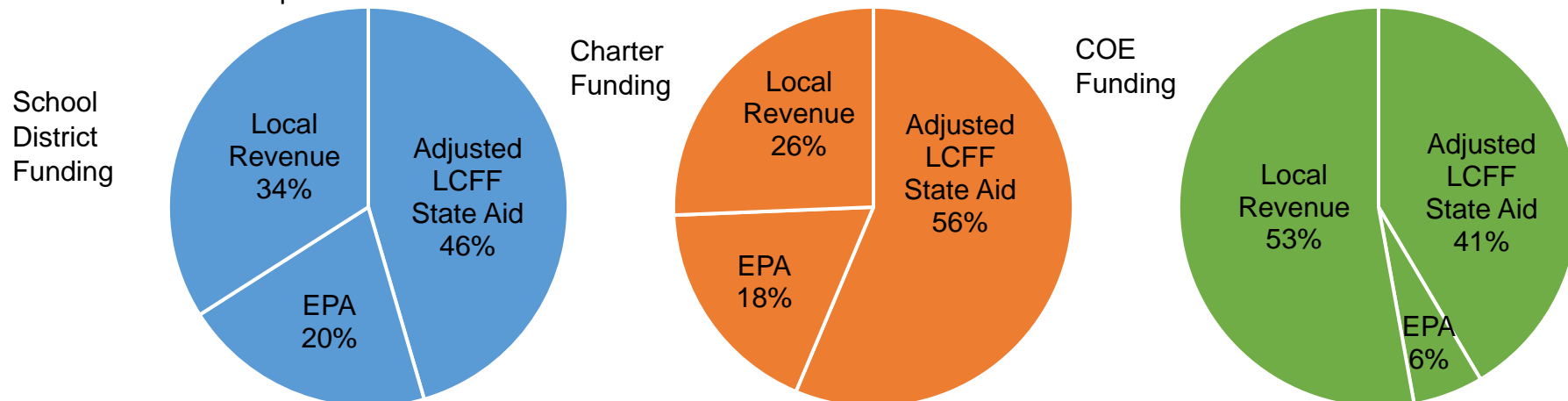
Funding Apportioned:

- \$55.6 Billion to School Districts
- \$6.7 Billion to Charter Schools
- \$1.2 Billion to County Offices of Education (COE)

LCFF Funding Detail

Sources	School Districts	Charter Schools	School District & Charter Subtotal	County Offices of Education	Statewide Total
LCFF State Aid before Minimum State Aid (MSA)	\$ 25,077,525,263	\$ 3,800,333,086	\$ 28,877,858,349	\$ 267,450,400	\$ 29,145,308,749
Additional State Aid for MSA Guarantee, Other LCFF State Aid for COEs	<u>205,940,940</u>	<u>1,202,532</u>	<u>207,143,472</u>	<u>215,138,022</u>	<u>422,281,494</u>
Adjusted LCFF State Aid (subtotal)	25,283,466,203	3,801,535,618	29,085,001,821	482,588,422	29,567,590,243
EPA State Aid	11,376,351,095	1,216,485,023	12,592,836,118	65,917,796	12,658,753,914
Local Revenue/In-lieu of Property Taxes ¹	<u>18,918,729,595</u>	<u>1,730,100,999</u>	<u>20,648,830,594</u>	<u>614,861,234</u>	<u>21,263,691,828</u>
Total LCFF Funding Sources	\$ 55,578,546,893	\$ 6,748,121,640	\$ 62,326,668,533	\$ 1,163,367,452	\$ 63,490,035,985

¹Amounts in table and pie charts do not include excess local revenue.



SCHOOL DISTRICT AND CHARTER SCHOOL DATA

Summary

LCFF Entitlement Component	District Count	% of Districts	District Funding	Charter Count	% of Charters	Charter Funding	Total Count	Total Funding
Base Grant Funding ²	910	96.6%	\$45,000,701,968	1,276	100.0%	\$5,717,495,689	2,186	\$50,718,197,657
Supplemental Grant Funding	942	100.0%	5,627,927,001	1,276	100.0%	696,777,836	2,218	6,324,704,837
Concentration Grant Funding	561	59.6%	3,207,931,038	755	59.2%	330,594,191	1,316	3,538,525,229
Necessary Small School (NSS) Allowance	102	10.8%	97,334,695	n/a	n/a	n/a	102	97,334,695
Add-on Funding	925	98.2%	1,379,553,872	21	1.6%	1,991,385	946	1,381,545,257
Miscellaneous Adjustments ³	12	1.3%	-7,653,861	0	0.0%	0	12	-7,653,861
State Aid for MSA Guarantee	177	18.8%	205,940,940	17	1.3%	1,202,532	194	207,143,472
Total LCFF Entitlement⁴	n/a	n/a	\$55,511,735,653	n/a	n/a	\$6,748,061,633	n/a	\$62,259,797,286

²Some school districts are fully funded through NSS and do not receive Base Grant Funding; some charter schools have no Base Grant Funding due to zero funded ADA.

³ Adjustments for special legislation, instructional time penalties, and class size penalties.

⁴Total LCFF Entitlement is less than Total LCFF Funding Sources (shown on page 1) due to EPA State Aid minimum guarantee.

Ten Largest School Districts (based on Funded ADA)

School District Name	ADA	UPP
Los Angeles Unified	414,376.49	85.18%
San Diego Unified	97,967.39	59.16%
Long Beach Unified	68,166.65	68.19%
Fresno Unified	66,930.98	88.79%
Elk Grove Unified	60,861.71	55.20%
Corona-Norco Unified	50,664.03	48.24%
San Francisco Unified	50,265.20	58.83%
San Bernardino City Unified	45,880.12	90.43%
Capistrano Unified	44,723.41	27.46%
Santa Ana Unified	43,795.05	88.12%

Ten Largest Charter Schools (based on Funded ADA)

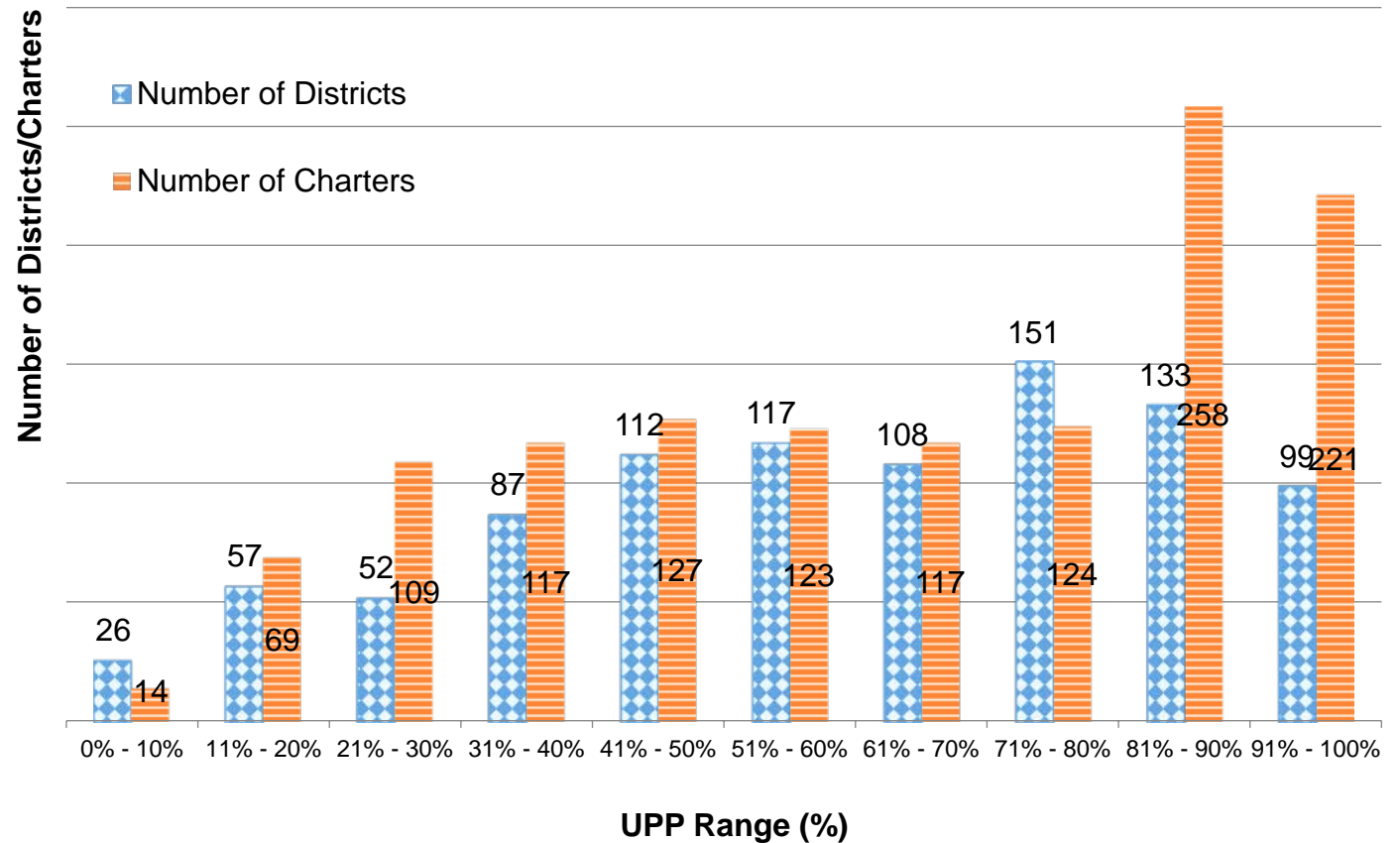
Charter School Name	ADA	UPP
Blue Ridge Academy	6,986.25	39.92%
River Springs Charter	6,619.09	55.30%
Visions In Education	6,341.75	50.64%
Granada Hills Charter	5,101.40	51.23%
Opportunities for Learning - Baldwin Park	4,581.14	74.26%
Cabrillo Point Academy	4,501.73	34.13%
Heartland Charter	4,126.04	39.03%
Pacific Coast Academy	4,073.94	39.63%
California Connections Academy Southern California	3,822.49	46.73%
Mission Vista Academy	3,717.15	41.45%

Total Funded ADA by Grade Span (includes NSS ADA)

LEA Type	Number of LEAs	Grades TK/K-3	Grades 4-6	Grades 7-8	Grades 9-12	TOTAL ADA
School Districts	942	1,599,792.09	1,188,548.70	812,063.25	1,633,390.59	5,233,794.63
Charter Schools	1,279	178,933.23	134,824.16	110,552.15	235,272.27	659,581.81
TOTAL	2,218	1,778,725.32	1,323,372.86	922,615.40	1,868,662.86	5,893,376.44

Unduplicated Pupil Percentage (UPP) Ranges for School Districts and Charter Schools

UPP Range	District Count	Charter Count
0% - 10%	26	14
11% - 20%	57	69
21% - 30%	52	109
31% - 40%	87	117
41% - 50%	112	127
51% - 60%	117	123
61% - 70%	108	117
71% - 80%	151	124
81% - 90%	133	258
91% - 100%	99	221
Total	942	1,279



COUNTY OFFICE OF EDUCATION DATA

LCFF Funding Summary

LCFF Entitlement	Number of COEs	Amount
Funding Based on LCFF Target ⁵	25	\$297,095,644
Funding Based on “Hold Harmless” provisions of <i>EC</i> Section 2575(g)(2)	33	\$650,043,650

⁵Final determination of LEAs funded at the LCFF Target is made at the Second Principal (P-2) Apportionment.

LCFF Target Entitlement Calculation

LCFF Target Components	Number of COEs	Amount
Base Grant Funding	53	\$180,739,551
Supplemental Grant Funding	50	55,933,896
Concentration Grant Funding	50	<u>24,448,654</u>
Alternative Education Grant (subtotal)	n/a	\$261,122,101
Operations Grant Funding	58	480,115,296
Add-on Funding	36	<u>30,684,488</u>
Total LCFF Target Entitlement	n/a	\$771,921,885

Alternative Education Grant Average Daily Attendance (ADA)

Non-Juvenile Court School ADA	8,885.72
Juvenile Court School ADA	5,642.23
Total County Funded ADA	14,527.95

Unduplicated Pupil Percentage (UPP)

Average UPP (Non-Juvenile Court School)	74.45%
Lowest non-zero UPP (Non-Juvenile Court School)	46.42%

Additional State Aid

Additional State Aid Component	Number of COEs	Amount
Additional State Aid for Minimum State Aid Guarantee	25	\$135,747,129
State Aid Pursuant to <i>EC</i> Section 2575.1	24	7,424,225
State Aid Pursuant to <i>EC</i> Section 2575.2	51	71,966,668
Total Additional State Aid	n/a	\$215,138,022