

# Local Control Funding Formula (LCFF) Statewide Fingertip Facts 2021–22 Fiscal Year – Second Principal Apportionment (as of June 2022)

Prepared by: CA Dept. of Education  
School Fiscal Services Division

## 2021–22 AT A GLANCE

### Funding Sources:

- \$29.3 Billion from State General Fund
- \$22.1 Billion from Local Revenue
- \$15.8 Billion from Education Protection Account (EPA)

**\$67.2  
Billion**

### Funding Apportioned:

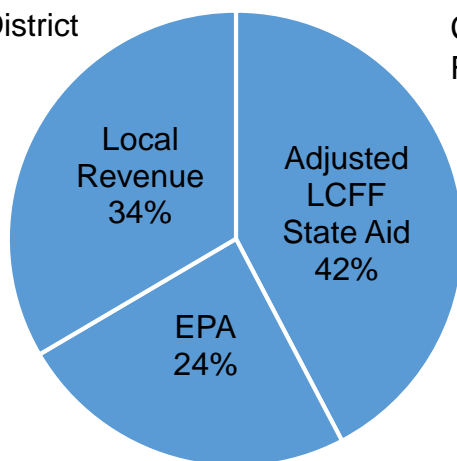
- \$59.3 Billion to School Districts
- \$6.8 Billion to Charter Schools
- \$1.1 Billion to County Offices of Education (COE)

## LCFF Funding Detail

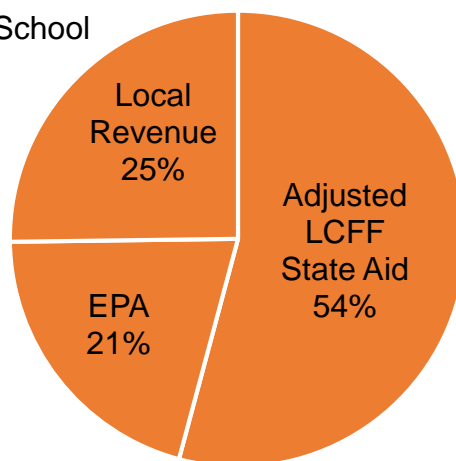
Sources	School Districts	Charter Schools	School District & Charter Subtotal	County Offices of Education	Statewide Total
LCFF State Aid before Minimum State Aid (MSA)	\$ 24,886,365,801	\$ 3,704,844,452	\$ 28,591,210,253	\$ 227,742,739	\$ 28,818,952,992
Additional State Aid for MSA Guarantee, Other LCFF State Aid for COEs	192,377,834	1,037,442	193,415,276	235,003,493	428,418,769
Adjusted LCFF State Aid (subtotal)	25,078,743,635	3,705,881,894	28,784,625,529	462,746,232	29,247,371,761
EPA State Aid	14,364,657,197	1,411,095,514	15,775,752,711	40,683,864	15,816,436,575
Local Revenue/In-lieu of Property Taxes <sup>1</sup>	19,836,777,292	1,724,477,632	21,561,254,924	580,347,591	22,141,602,515
<b>Total LCFF Funding Sources</b>	<b>\$ 59,280,178,124</b>	<b>\$ 6,841,455,040</b>	<b>\$ 66,121,633,164</b>	<b>\$ 1,083,777,687</b>	<b>\$ 67,205,410,851</b>

<sup>1</sup>Amounts in table and pie charts do not include excess local revenue.

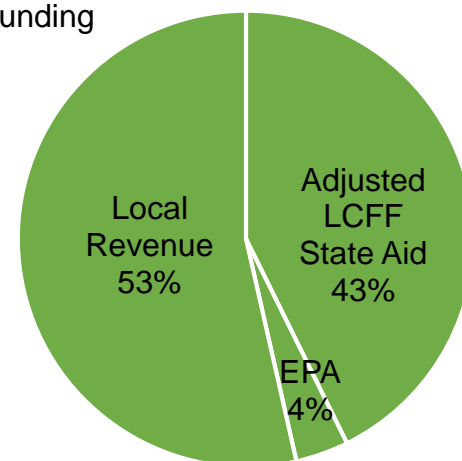
School District Funding



Charter School Funding



COE Funding



## SCHOOL DISTRICT AND CHARTER SCHOOL DATA

### Summary

LCFF Entitlement Component	District Count	% of Districts	District Funding	Charter Count	% of Charters	Charter Funding	Total Count	Total Funding
Base Grant Funding <sup>2</sup>	899	95.6%	\$47,240,459,058	1,272	99.9%	\$5,726,699,016	2,171	\$52,967,158,074
Supplemental Grant Funding	940	100.0%	5,913,102,624	1,272	99.9%	692,838,695	2,212	6,605,941,319
Concentration Grant Funding	561	59.7%	4,385,099,204	748	58.8%	418,828,206	1,309	4,803,927,410
Necessary Small School (NSS) Allowance	105	11.2%	106,785,955	n/a	n/a	n/a	105	106,785,955
Add-on Funding	923	98.2%	1,379,553,872	21	1.6%	1,991,385	944	1,381,545,257
Miscellaneous Adjustments <sup>3</sup>	4	0.4%	-1,430,439	0	0.0%	0	4	-1,430,439
State Aid for MSA Guarantee	167	17.8%	192,377,834	18	1.4%	1,037,442	185	193,415,276
<b>Total LCFF Entitlement<sup>4</sup></b>	<b>n/a</b>	<b>n/a</b>	<b>\$59,215,948,108</b>	<b>n/a</b>	<b>n/a</b>	<b>\$6,841,394,744</b>	<b>n/a</b>	<b>\$66,057,342,852</b>

<sup>2</sup>Some school districts are fully funded through NSS and do not receive Base Grant Funding; some charter schools have no Base Grant Funding due to zero funded ADA.

<sup>3</sup> Adjustments for special legislation, instructional time penalties, and class size penalties.

<sup>4</sup>Total LCFF Entitlement is less than Total LCFF Funding Sources (shown on page 1) due to EPA State Aid minimum guarantee.

### Ten Largest School Districts (based on Funded ADA)

School District Name	ADA	UPP
Los Angeles Unified	413,109.66	85.62%
San Diego Unified	97,837.28	58.36%
Long Beach Unified	68,118.25	65.81%
Fresno Unified	66,854.84	88.52%
Elk Grove Unified	60,819.22	52.96%
Corona-Norco Unified	50,655.25	53.56%
San Francisco Unified	50,228.82	58.20%
San Bernardino City Unified	45,831.12	90.37%
Capistrano Unified	44,749.16	27.46%
Santa Ana Unified	43,825.73	86.05%

### Ten Largest Charter Schools (based on Funded ADA)

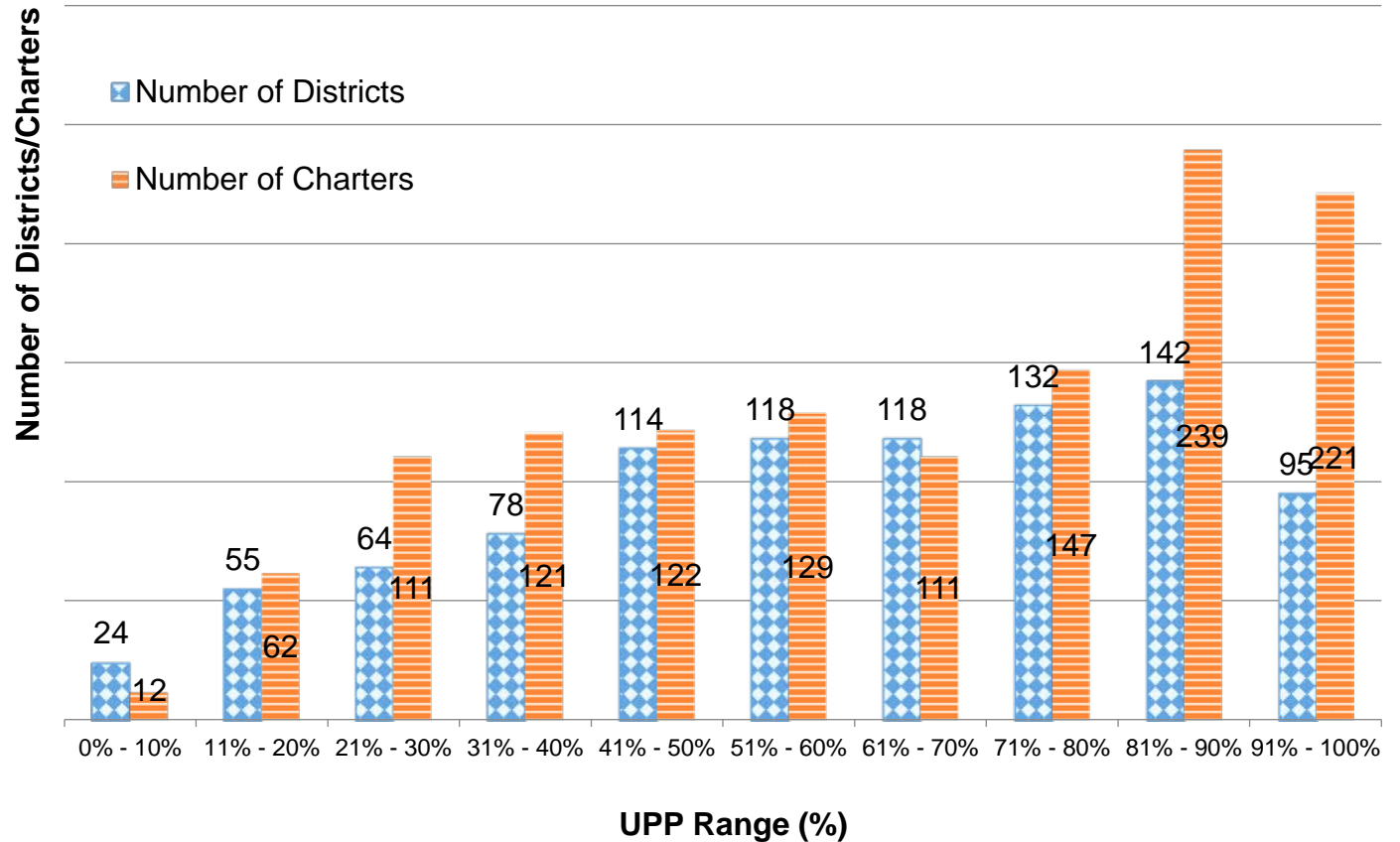
Charter School Name	ADA	UPP
Blue Ridge Academy	6,477.16	39.80%
River Springs Charter	6,328.36	56.65%
Visions In Education	6,326.40	51.16%
California Virtual Academy @ Los Angeles	5,710.14	71.13%
Granada Hills Charter	5,361.93	50.77%
California Connections Academy Southern California	4,631.33	46.30%
Pacific Coast Academy	4,390.25	38.93%
Heartland Charter	4,355.37	40.25%
Mission Vista Academy	4,201.95	41.52%
Cabrillo Point Academy	4,123.23	33.84%

## Total Funded ADA by Grade Span (includes NSS ADA)

LEA Type	Number of LEAs	Grade TK/K-3	Grades 4-6	Grades 7-8	Grades 9-12	TOTAL ADA
<b>School Districts</b>	940	1,599,623.88	1,188,128.12	810,614.96	1,631,303.21	5,229,670.17
<b>Charter Schools</b>	1,275	173,736.56	132,565.20	104,250.47	219,110	629,662.22
<b>Total</b>	<b>2,215</b>	<b>1,773,360.44</b>	<b>1,320,693.32</b>	<b>914,865.43</b>	<b>1,850,413</b>	<b>5,859,332.39</b>

## Unduplicated Pupil Percentage (UPP) Ranges for School Districts and Charter Schools

UPP Range	District Count	Charter Count
0%-10%	24	12
11%-20%	55	62
21%-30%	64	111
31%-40%	78	121
41%-50%	114	122
51%-60%	118	129
61%-70%	118	111
71%-80%	132	147
81%-90%	142	239
91%-100%	95	221
<b>Total</b>	<b>940</b>	<b>1,275</b>



## COUNTY OFFICE OF EDUCATION DATA

### LCFF Funding Summary

LCFF Entitlement	Number of COEs	Amount
Funding Based on LCFF Target <sup>5</sup>	25	\$230,830,014
Funding Based on “Hold Harmless” provisions of <i>EC</i> Section 2575(g)(2)	33	\$617,484,852

<sup>5</sup>Final determination of LEAs funded at the LCFF Target is made at the Second Principal (P-2) Apportionment.

### LCFF Target Entitlement Calculation

LCFF Target Components	Number of COEs	Amount
Base Grant Funding	52	\$89,670,331
Supplemental Grant Funding	49	27,144,352
Concentration Grant Funding	49	11,552,311
Alternative Education Grant (subtotal)	n/a	\$128,366,994
Operations Grant Funding	58	476,362,382
Add-on Funding	36	30,684,488
<b>Total LCFF Target Entitlement</b>	<b>n/a</b>	<b>\$635,413,864</b>

### Alternative Education Grant Average Daily Attendance (ADA)

Non-Juvenile Court School ADA	4,468.78
Juvenile Court School ADA	2,416.77
<b>Total County Funded ADA</b>	<b>6,885.55</b>

### Unduplicated Pupil Percentage (UPP)

Average UPP (Non-Juvenile Court School)	76.41%
Lowest non-zero UPP (Non-Juvenile Court School)	43.97%

### Additional State Aid

Additional State Aid Component	Number of COEs	Amount
Additional State Aid for Minimum State Aid Guarantee	27	\$158,669,296
State Aid Pursuant to <i>EC</i> Section 2575.1	24	7,800,863
State Aid Pursuant to <i>EC</i> Section 2575.2	51	68,533,334
<b>Total Additional State Aid</b>	<b>n/a</b>	<b>\$235,003,493</b>