

**Academic Achievement Data for Local Educational Agencies
Identified for Improvement or Corrective Action Recommended for Approval**

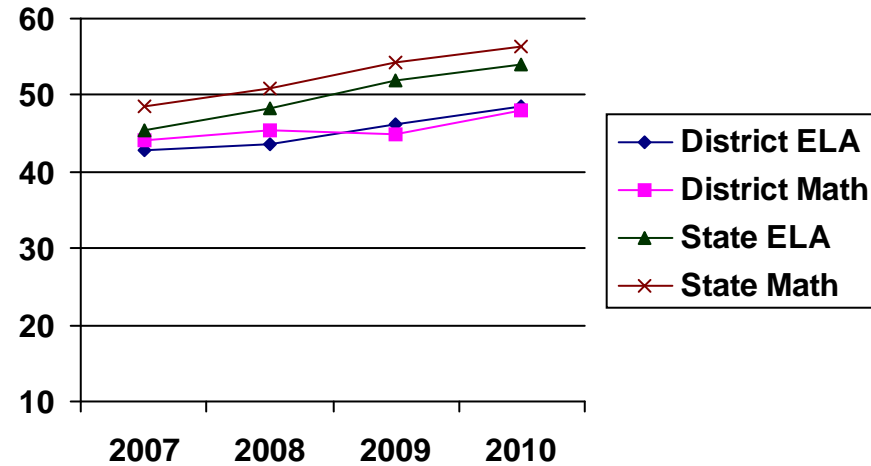
2009-10 District Accountability Dashboard

CD: 0761648 County: Contra Costa District: Antioch Unified District Type: Unified

Adequate Yearly Progress (AYP) Percent Proficient Over 4 Years

Groups	* 2007 ELA District	2007 ELA State	* 2007 Math District	2007 Math State	** 2010 ELA District	2010 ELA State	** 2010 Math District	2010 Math State	ELA District Change	ELA State Change	Math District Change	Math State Change
Overall	42.9	45.5	44.2	48.5	48.5	53.9	47.9	56.3	5.6	8.4	3.7	7.8
Black/African American	29.6	32.7	28.3	31.1	35.7	41.3	32.7	39.6	6.1	8.6	4.4	8.5
American Indian/Alaska Native	36.3	40.6	46.0	40.9	41.2	46.7	44.8	46.9	4.9	6.1	-1.2	6.0
Asian	53.7	68.9	61.3	76.6	64.9	76.8	67.3	82.5	11.2	7.9	6.0	5.9
Filipino	58.5	63.0	60.1	65.6	69.6	71.5	69.6	72.0	11.1	8.5	9.5	6.4
Hispanic	33.8	31.1	38.4	37.0	43.0	41.7	45.0	46.7	9.2	10.6	6.6	9.7
Native Hawaiian/Pacific Islander	41.4	43.4	45.4	47.0	39.4	50.7	47.1	53.1	-2.0	7.3	1.7	6.1
White	55.6	64.3	54.2	62.8	61.3	70.9	58.0	69.0	5.7	6.6	3.8	6.2
Socioeconomically Disadvantaged	28.5	30.4	34.7	36.7	38.5	41.1	40.1	46.3	10.0	10.7	5.4	9.6
English Learners	24.9	25.8	35.0	35.8	31.1	35.6	39.4	45.6	6.2	9.8	4.4	9.8
Students with Disabilities	18.5	20.7	20.3	24.1	28.2	31.8	31.9	34.5	9.7	11.1	11.6	10.4

District Overall Percent Proficient Growth



District Program Improvement (PI) status (2010-11)

Current Status: In PI First Year Identified: 2008-2009

School PI Status (2010-11)

School Type	Num. of Schools	Num. in Title I	Num. in PI	Year 1	Year 2	Year 3	Year 4	Year 5
Elementary	7	7	7	2	2	0	0	3
Middle	2	2	2	0	0	0	0	2
High	1	1	1	0	0	0	1	0
Total	10	10	10	2	2	0	1	5

Number of Schools That Made AYP and Academic Performance Index (API)

School Type	AYP 2007	AYP 2008	AYP 2009	AYP 2010	API 2007	API 2008	API 2009	API 2010
Elementary	10	3	0	0	4	1	2	5
Middle	0	1	0	0	1	1	1	1
High	4	0	0	3	0	1	0	2
Total	14	4	0	3	5	3	3	8

* 2007 Targets: English-language arts (ELA) 23.0% Math 23.7%
** 2010 Targets: ELA 56.0% Math 56.4%

2009-10 District Accountability Dashboard

CD: 1964287

County: Los Angeles

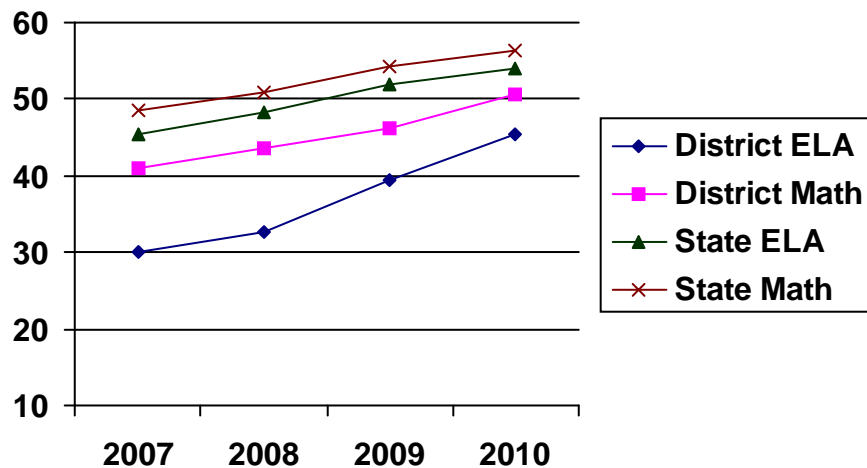
District: Baldwin Park Unified

District Type: Unified

Adequate Yearly Progress (AYP) Percent Proficient Over 4 Years

Groups	* 2007 ELA District	2007 ELA State	* 2007 Math District	2007 Math State	** 2010 ELA District	2010 ELA State	** 2010 Math District	2010 Math State	ELA District Change	ELA State Change	Math District Change	Math State Change
Overall	30.0	45.5	41.0	48.5	45.3	53.9	50.7	56.3	15.3	8.4	9.7	7.8
Black/African American	29.6	32.7	32.4	31.1	49.3	41.3	39.1	39.6	19.7	8.6	6.7	8.5
American Indian/Alaska Native	14.3	40.6	35.7	40.9		46.7		46.9		6.1		6.0
Asian	65.8	68.9	78.5	76.6	75.8	76.8	84.9	82.5	10.0	7.9	6.4	5.9
Filipino	50.2	63.0	61.2	65.6	66.8	71.5	69.4	72.0	16.6	8.5	8.2	6.4
Hispanic	27.9	31.1	38.9	37.0	43.4	41.7	48.7	46.7	15.5	10.6	9.8	9.7
Native Hawaiian/Pacific Islander		43.4		47.0		50.7		53.1		7.3		6.1
White	38.3	64.3	48.1	62.8	51.7	70.9	56.9	69.0	13.4	6.6	8.8	6.2
Socioeconomically Disadvantaged	27.3	30.4	39.4	36.7	43.1	41.1	49.1	46.3	15.8	10.7	9.7	9.6
English Learners	19.5	25.8	33.4	35.8	38.5	35.6	47.0	45.6	19.0	9.8	13.6	9.8
Students with Disabilities	15.1	20.7	22.8	24.1	30.7	31.8	35.1	34.5	15.6	11.1	12.3	10.4

District Overall Percent Proficient Growth



District Program Improvement (PI) status (2010-11)

Current Status: In PI First Year Identified: 2008-2009

School PI Status (2010-11)

School Type	Num. of Schools	Num. in Title I	Num. in PI	Year 1	Year 2	Year 3	Year 4	Year 5
Elementary	13	13	10	0	2	3	2	3
Middle	4	4	4	0	0	1	0	3
High	3	3	2	0	2	0	0	0
Total	20	20	16	0	4	4	2	6

Number of Schools That Made AYP and Academic Performance Index (API)

School Type	AYP 2007	AYP 2008	AYP 2009	AYP 2010	API 2007	API 2008	API 2009	API 2010
Elementary	2	2	6	4	2	7	9	10
Middle	0	1	0	0	1	2	4	3
High	0	1	2	1	3	1	1	0
Total	2	4	8	5	6	10	14	13

* 2007 Targets: English-language arts (ELA) 23.0% Math 23.7%
 ** 2010 Targets: ELA 56.0% Math 56.4%

2009-10 District Accountability Dashboard

CD: 3066464

County: Orange

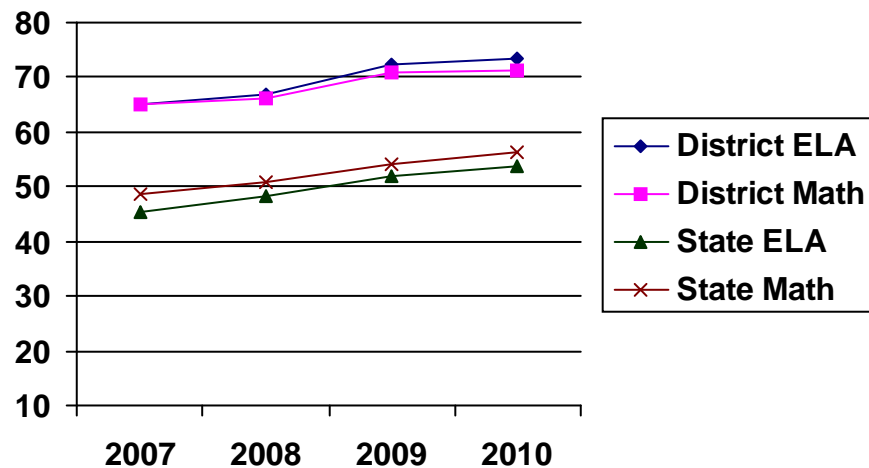
District: Capistrano Unified

District Type: Unified

Adequate Yearly Progress (AYP) Percent Proficient Over 4 Years

Groups	* 2007 ELA District	2007 ELA State	* 2007 Math District	2007 Math State	** 2010 ELA District	2010 ELA State	** 2010 Math District	2010 Math State	ELA District Change	ELA State Change	Math District Change	Math State Change
Overall	64.9	45.5	64.9	48.5	73.4	53.9	71.2	56.3	8.5	8.4	6.3	7.8
Black/African American	54.5	32.7	47.4	31.1	62.7	41.3	54.0	39.6	8.2	8.6	6.6	8.5
American Indian/Alaska Native	62.6	40.6	58.1	40.9	62.4	46.7	57.3	46.9	-0.2	6.1	-0.8	6.0
Asian	82.0	68.9	86.6	76.6	89.3	76.8	90.9	82.5	7.3	7.9	4.3	5.9
Filipino	73.8	63.0	75.0	65.6	77.9	71.5	79.6	72.0	4.1	8.5	4.6	6.4
Hispanic	35.5	31.1	40.2	37.0	50.6	41.7	51.6	46.7	15.1	10.6	11.4	9.7
Native Hawaiian/Pacific Islander	71.9	43.4	68.8	47.0	75.0	50.7	65.9	53.1	3.1	7.3	-2.9	6.1
White	71.5	64.3	70.1	62.8	80.3	70.9	76.7	69.0	8.8	6.6	6.6	6.2
Socioeconomically Disadvantaged	31.5	30.4	36.3	36.7	46.0	41.1	48.3	46.3	14.5	10.7	12.0	9.6
English Learners	30.1	25.8	38.1	35.8	38.0	35.6	44.4	45.6	7.9	9.8	6.3	9.8
Students with Disabilities	31.7	20.7	34.3	24.1	39.4	31.8	35.8	34.5	7.7	11.1	1.5	10.4

District Overall Percent Proficient Growth



District Program Improvement (PI) status (2010-11)

Current Status: In PI First Year Identified: 2010-2011

School PI Status (2010-11)

School Type	Num. of Schools	Num. in Title I	Num. in PI	Year 1	Year 2	Year 3	Year 4	Year 5
Elementary	5	5	3	1	0	0	0	2
Middle	1	1	0	0	0	0	0	0
High	1	1	0	0	0	0	0	0
Total	7	7	3	1	0	0	0	2

Number of Schools That Made AYP and Academic Performance Index (API)

School Type	AYP 2007	AYP 2008	AYP 2009	AYP 2010	API 2007	API 2008	API 2009	API 2010
Elementary	32	28	31	19	28	27	31	24
Middle	9	6	6	7	7	6	8	8
High	6	4	3	5	1	2	3	1
Total	47	38	40	31	36	35	42	33

* 2007 Targets: English-language arts (ELA) 23.0% Math 23.7%
 ** 2010 Targets: ELA 56.0% Math 56.4%

2009-10 District Accountability Dashboard

CD: 4870532

County: Solano

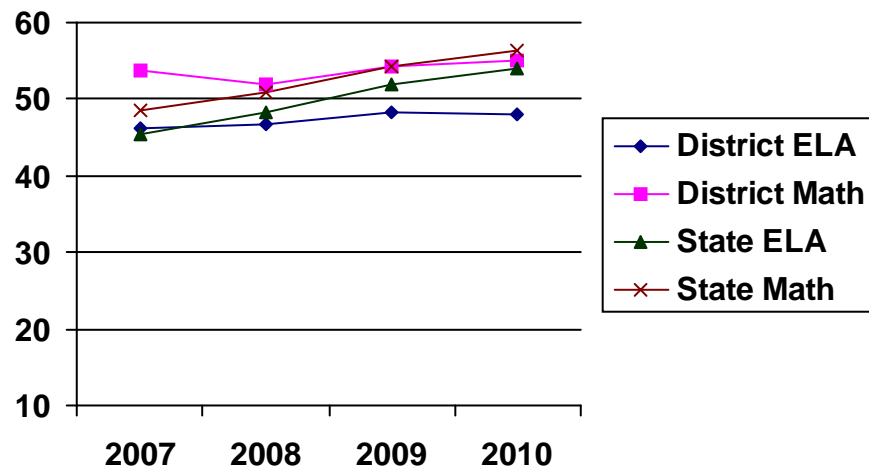
District: Dixon Unified

District Type: Unified

Adequate Yearly Progress (AYP) Percent Proficient Over 4 Years

Groups	* 2007 ELA District	2007 ELA State	* 2007 Math District	2007 Math State	** 2010 ELA District	2010 ELA State	** 2010 Math District	2010 Math State	ELA District Change	ELA State Change	Math District Change	Math State Change
Overall	46.2	45.5	53.8	48.5	48.0	53.9	55.1	56.3	1.8	8.4	1.3	7.8
Black/African American	37.5	32.7	38.3	31.1	38.0	41.3	28.2	39.6	0.5	8.6	-10.1	8.5
American Indian/Alaska Native	41.7	40.6	66.7	40.9		46.7		46.9		6.1		6.0
Asian	63.8	68.9	68.1	76.6	53.1	76.8	75.0	82.5	-10.7	7.9	6.9	5.9
Filipino	58.5	63.0	68.3	65.6	59.4	71.5	65.6	72.0	0.9	8.5	-2.7	6.4
Hispanic	30.5	31.1	44.2	37.0	36.6	41.7	44.9	46.7	6.1	10.6	0.7	9.7
Native Hawaiian/Pacific Islander	40.0	43.4	40.0	47.0		50.7		53.1		7.3		6.1
White	62.1	64.3	63.8	62.8	61.2	70.9	68.6	69.0	-0.9	6.6	4.8	6.2
Socioeconomically Disadvantaged	27.7	30.4	41.2	36.7	33.0	41.1	42.1	46.3	5.3	10.7	0.9	9.6
English Learners	26.6	25.8	41.6	35.8	30.1	35.6	40.9	45.6	3.5	9.8	-0.7	9.8
Students with Disabilities	14.9	20.7	22.1	24.1	17.5	31.8	25.8	34.5	2.6	11.1	3.7	10.4

District Overall Percent Proficient Growth



District Program Improvement (PI) status (2010-11)

Current Status: In PI First Year Identified: 2008-2009

School PI Status (2010-11)

School Type	Num. of Schools	Num. in Title I	Num. in PI	Year 1	Year 2	Year 3	Year 4	Year 5
Elementary	2	2	2	0	0	0	0	2
Middle	1	1	1	0	1	0	0	0
High	0	0	0	0	0	0	0	0
Total	3	3	3	0	1	0	0	2

Number of Schools That Made AYP and Academic Performance Index (API)

School Type	AYP 2007	AYP 2008	AYP 2009	AYP 2010	API 2007	API 2008	API 2009	API 2010
Elementary	4	1	3	0	1	0	1	0
Middle	1	0	0	0	1	0	0	1
High	1	0	0	3	0	0	0	1
Total	6	1	3	3	2	0	1	2

* 2007 Targets: English-language arts (ELA) 23.0% Math 23.7%
 ** 2010 Targets: ELA 56.0% Math 56.4%

2009-10 District Accountability Dashboard

CD: 1062166

County: Fresno

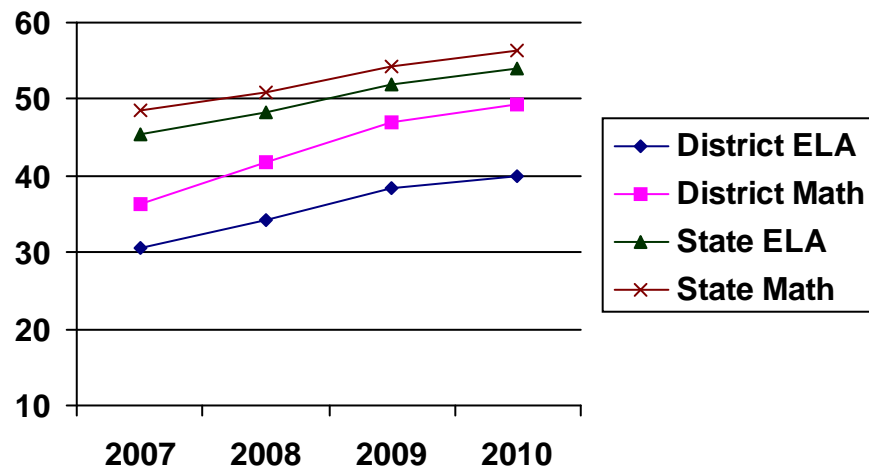
District: Fresno Unified

District Type: Unified

Adequate Yearly Progress (AYP) Percent Proficient Over 4 Years

Groups	* 2007 ELA District	2007 ELA State	* 2007 Math District	2007 Math State	** 2010 ELA District	2010 ELA State	** 2010 Math District	2010 Math State	ELA District Change	ELA State Change	Math District Change	Math State Change
Overall	30.7	45.5	36.3	48.5	40.0	53.9	49.3	56.3	9.3	8.4	13.0	7.8
Black/African American	25.8	32.7	26.0	31.1	33.5	41.3	38.1	39.6	7.7	8.6	12.1	8.5
American Indian/Alaska Native	32.1	40.6	36.7	40.9	38.4	46.7	45.4	46.9	6.3	6.1	8.7	6.0
Asian	26.1	68.9	41.7	76.6	38.9	76.8	58.2	82.5	12.8	7.9	16.5	5.9
Filipino	57.0	63.0	62.4	65.6	72.6	71.5	73.2	72.0	15.6	8.5	10.8	6.4
Hispanic	26.3	31.1	32.0	37.0	36.4	41.7	46.1	46.7	10.1	10.6	14.1	9.7
Native Hawaiian/Pacific Islander	49.6	43.4	54.8	47.0	55.8	50.7	64.8	53.1	6.2	7.3	10.0	6.1
White	55.6	64.3	54.7	62.8	63.1	70.9	64.3	69.0	7.5	6.6	9.6	6.2
Socioeconomically Disadvantaged	25.4	30.4	32.2	36.7	36.1	41.1	46.8	46.3	10.7	10.7	14.6	9.6
English Learners	18.5	25.8	30.6	35.8	29.5	35.6	46.2	45.6	11.0	9.8	15.6	9.8
Students with Disabilities	11.1	20.7	14.8	24.1	24.5	31.8	29.0	34.5	13.4	11.1	14.2	10.4

District Overall Percent Proficient Growth



District Program Improvement (PI) status (2010-11)

Current Status: In PI First Year Identified: 2004-2005

School PI Status (2010-11)

School Type	Num. of Schools	Num. in Title I	Num. in PI	Year 1	Year 2	Year 3	Year 4	Year 5
Elementary	63	63	40	5	4	1	0	30
Middle	15	15	10	0	0	0	0	10
High	13	13	10	1	1	1	1	6
Total	91	91	60	6	5	2	1	46

Number of Schools That Made AYP and Academic Performance Index (API)

School Type	AYP 2007	AYP 2008	AYP 2009	AYP 2010	API 2007	API 2008	API 2009	API 2010
Elementary	28	19	32	16	28	43	42	36
Middle	3	3	2	2	2	6	8	5
High	9	5	2	4	2	2	1	3
Total	40	27	36	22	32	51	51	44

* 2007 Targets: English-language arts (ELA) 23.0% Math 23.7%
 ** 2010 Targets: ELA 56.0% Math 56.4%

2009-10 District Accountability Dashboard

CD: 3066522

County: Orange

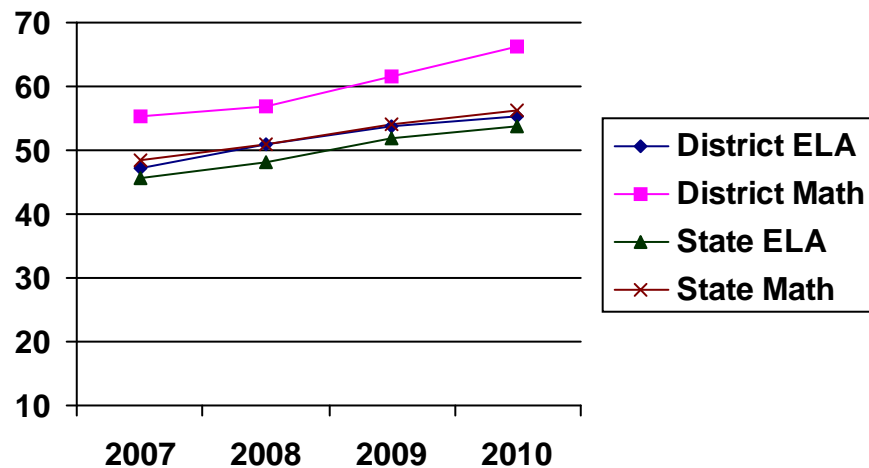
District: Garden Grove Unified

District Type: Unified

Adequate Yearly Progress (AYP) Percent Proficient Over 4 Years

Groups	* 2007 ELA District	2007 ELA State	* 2007 Math District	2007 Math State	** 2010 ELA District	2010 ELA State	** 2010 Math District	2010 Math State	ELA District Change	ELA State Change	Math District Change	Math State Change
Overall	47.3	45.5	55.3	48.5	55.4	53.9	66.3	56.3	8.1	8.4	11.0	7.8
Black/African American	41.2	32.7	41.9	31.1	54.1	41.3	58.4	39.6	12.9	8.6	16.5	8.5
American Indian/Alaska Native	45.2	40.6	48.4	40.9	55.8	46.7	67.3	46.9	10.6	6.1	18.9	6.0
Asian	67.4	68.9	78.8	76.6	76.0	76.8	86.7	82.5	8.6	7.9	7.9	5.9
Filipino	67.0	63.0	73.9	65.6	75.5	71.5	78.9	72.0	8.5	8.5	5.0	6.4
Hispanic	32.7	31.1	40.6	37.0	40.5	41.7	53.4	46.7	7.8	10.6	12.8	9.7
Native Hawaiian/Pacific Islander	37.5	43.4	46.3	47.0	47.9	50.7	56.8	53.1	10.4	7.3	10.5	6.1
White	60.6	64.3	62.4	62.8	68.1	70.9	71.7	69.0	7.5	6.6	9.3	6.2
Socioeconomically Disadvantaged	40.4	30.4	49.7	36.7	48.1	41.1	61.8	46.3	7.7	10.7	12.1	9.6
English Learners	41.5	25.8	52.6	35.8	46.3	35.6	62.2	45.6	4.8	9.8	9.6	9.8
Students with Disabilities	19.7	20.7	26.4	24.1	32.4	31.8	43.4	34.5	12.7	11.1	17.0	10.4

District Overall Percent Proficient Growth



District Program Improvement (PI) status (2010-11)

Current Status: In PI First Year Identified: 2008-2009

School PI Status (2010-11)

School Type	Num. of Schools	Num. in Title I	Num. in PI	Year 1	Year 2	Year 3	Year 4	Year 5
Elementary	42	42	19	6	8	4	1	0
Middle	10	10	6	2	4	0	0	0
High	9	9	6	6	0	0	0	0
Total	61	61	31	14	12	4	1	0

Number of Schools That Made AYP and Academic Performance Index (API)

School Type	AYP 2007	AYP 2008	AYP 2009	AYP 2010	API 2007	API 2008	API 2009	API 2010
Elementary	44	20	25	14	20	26	34	32
Middle	10	3	4	1	3	1	7	4
High	10	9	4	3	3	0	2	3
Total	64	32	33	18	26	27	43	39

* 2007 Targets: English-language arts (ELA) 23.0% Math 23.7%
** 2010 Targets: ELA 56.0% Math 56.4%

2009-10 District Accountability Dashboard

CD: 1663917

County: Kings

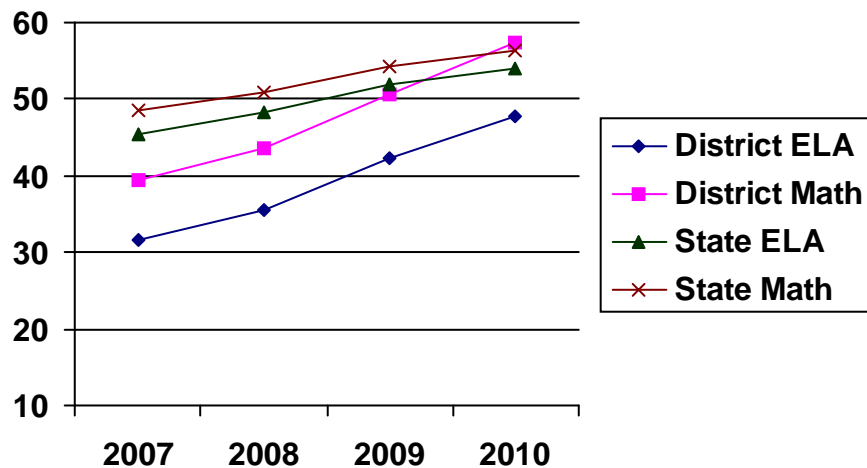
District: Hanford Elementary

District Type: Elementary

Adequate Yearly Progress (AYP) Percent Proficient Over 4 Years

Groups	* 2007 ELA District	2007 ELA State	* 2007 Math District	2007 Math State	** 2010 ELA District	2010 ELA State	** 2010 Math District	2010 Math State	ELA District Change	ELA State Change	Math District Change	Math State Change
Overall	31.6	45.5	39.4	48.5	47.7	53.9	57.4	56.3	16.1	8.4	18.0	7.8
Black/African American	29.2	32.7	37.2	31.1	44.6	41.3	50.0	39.6	15.4	8.6	12.8	8.5
American Indian/Alaska Native	19.0	40.6	20.0	40.9	42.1	46.7	52.6	46.9	23.1	6.1	32.6	6.0
Asian	59.2	68.9	64.8	76.6	73.8	76.8	85.2	82.5	14.6	7.9	20.4	5.9
Filipino	67.2	63.0	72.4	65.6	77.1	71.5	83.3	72.0	9.9	8.5	10.9	6.4
Hispanic	25.3	31.1	34.2	37.0	42.1	41.7	54.0	46.7	16.8	10.6	19.8	9.7
Native Hawaiian/Pacific Islander		43.4		47.0		50.7		53.1		7.3		6.1
White	44.2	64.3	49.7	62.8	62.0	70.9	66.9	69.0	17.8	6.6	17.2	6.2
Socioeconomically Disadvantaged	24.7	30.4	33.5	36.7	42.3	41.1	53.4	46.3	17.6	10.7	19.9	9.6
English Learners	18.0	25.8	28.9	35.8	36.0	35.6	51.2	45.6	18.0	9.8	22.3	9.8
Students with Disabilities	13.5	20.7	20.8	24.1	35.7	31.8	42.3	34.5	22.2	11.1	21.5	10.4

District Overall Percent Proficient Growth



District Program Improvement (PI) status (2010-11)

Current Status: In PI First Year Identified: 2004-2005

School PI Status (2010-11)

School Type	Num. of Schools	Num. in Title I	Num. in PI	Year 1	Year 2	Year 3	Year 4	Year 5
Elementary	9	9	4	0	2	1	0	1
Middle	2	2	2	0	1	1	0	0
Total	11	11	6	0	3	2	0	1

Number of Schools That Made AYP and Academic Performance Index (API)

School Type	AYP 2007	AYP 2008	AYP 2009	AYP 2010	API 2007	API 2008	API 2009	API 2010
Elementary	4	2	5	5	2	3	5	7
Middle	1	0	0	0	0	1	2	2
High	0	0	0	0	0	0	0	0
Total	5	2	5	5	2	4	7	9

2009-10 District Accountability Dashboard

CD: 3968585

County: San Joaquin

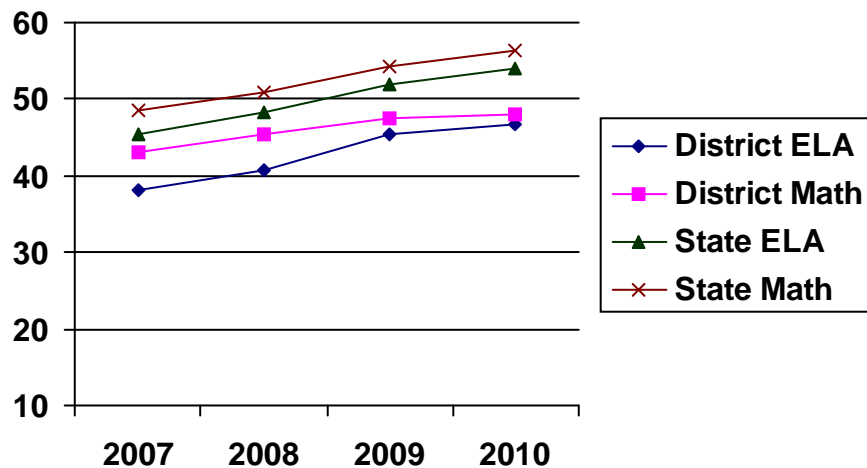
District: Lodi Unified

District Type: Unified

Adequate Yearly Progress (AYP) Percent Proficient Over 4 Years

Groups	* 2007 ELA District	2007 ELA State	* 2007 Math District	2007 Math State	** 2010 ELA District	2010 ELA State	** 2010 Math District	2010 Math State	ELA District Change	ELA State Change	Math District Change	Math State Change
Overall	38.0	45.5	43.2	48.5	46.6	53.9	47.9	56.3	8.6	8.4	4.7	7.8
Black/African American	26.7	32.7	28.1	31.1	33.2	41.3	29.4	39.6	6.5	8.6	1.3	8.5
American Indian/Alaska Native	46.5	40.6	46.4	40.9	41.2	46.7	49.1	46.9	-5.3	6.1	2.7	6.0
Asian	37.7	68.9	48.6	76.6	50.2	76.8	55.8	82.5	12.5	7.9	7.2	5.9
Filipino	52.4	63.0	57.7	65.6	61.6	71.5	62.4	72.0	9.2	8.5	4.7	6.4
Hispanic	27.4	31.1	34.6	37.0	36.7	41.7	39.8	46.7	9.3	10.6	5.2	9.7
Native Hawaiian/Pacific Islander	34.7	43.4	40.7	47.0	41.8	50.7	41.8	53.1	7.1	7.3	1.1	6.1
White	52.4	64.3	53.0	62.8	60.6	70.9	57.9	69.0	8.2	6.6	4.9	6.2
Socioeconomically Disadvantaged	26.8	30.4	35.2	36.7	37.6	41.1	40.8	46.3	10.8	10.7	5.6	9.6
English Learners	24.2	25.8	35.4	35.8	31.5	35.6	39.6	45.6	7.3	9.8	4.2	9.8
Students with Disabilities	17.4	20.7	23.7	24.1	27.7	31.8	30.7	34.5	10.3	11.1	7.0	10.4

District Overall Percent Proficient Growth



District Program Improvement (PI) status (2010-11)

Current Status: In PI First Year Identified: 2004-2005

School PI Status (2010-11)

School Type	Num. of Schools	Num. in Title I	Num. in PI	Year 1	Year 2	Year 3	Year 4	Year 5
Elementary	14	14	11	0	0	0	2	9
Middle	0	0	0	0	0	0	0	0
High	0	0	0	0	0	0	0	0
Total	14	14	11	0	0	0	2	9

Number of Schools That Made AYP and Academic Performance Index (API)

School Type	AYP 2007	AYP 2008	AYP 2009	AYP 2010	API 2007	API 2008	API 2009	API 2010
Elementary	20	11	12	9	16	14	12	15
Middle	1	1	1	1	3	2	2	3
High	3	2	1	1	4	1	1	2
Total	24	14	14	11	23	17	15	20

* 2007 Targets: English-language arts (ELA) 23.0% Math 23.7%
 ** 2010 Targets: ELA 56.0% Math 56.4%

2009-10 District Accountability Dashboard

CD: 5271621

County: Tehama

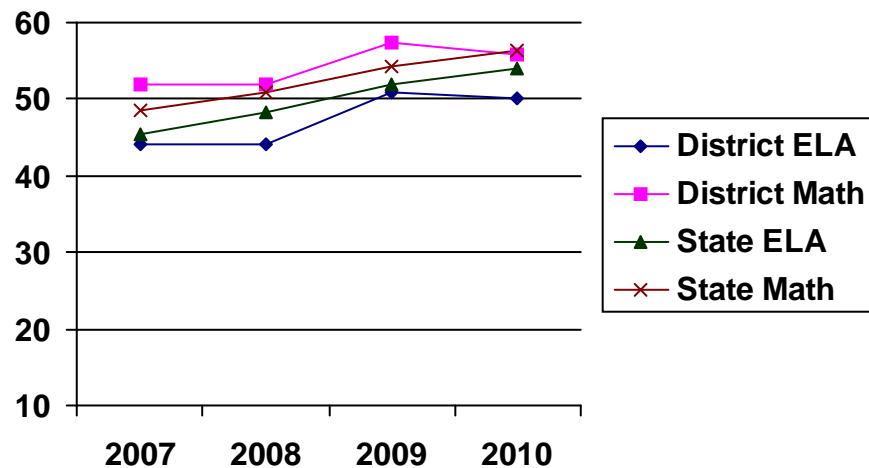
District: Red Bluff Union Elementary

District Type: Elementary

Adequate Yearly Progress (AYP) Percent Proficient Over 4 Years

Groups	* 2007 ELA District	2007 ELA State	* 2007 Math District	2007 Math State	** 2010 ELA District	2010 ELA State	** 2010 Math District	2010 Math State	ELA District Change	ELA State Change	Math District Change	Math State Change
Overall	44.1	45.5	52.0	48.5	50.1	53.9	55.8	56.3	6.0	8.4	3.8	7.8
Black/African American	53.8	32.7	61.5	31.1	52.9	41.3	47.1	39.6	-0.9	8.6	-14.4	8.5
American Indian/Alaska Native	31.8	40.6	47.7	40.9	51.6	46.7	61.3	46.9	19.8	6.1	13.6	6.0
Asian	50.0	68.9	75.0	76.6	18.2	76.8	45.5	82.5	-31.8	7.9	-29.5	5.9
Filipino		63.0		65.6		71.5		72.0		8.5		6.4
Hispanic	29.2	31.1	40.0	37.0	40.2	41.7	47.6	46.7	11.0	10.6	7.6	9.7
Native Hawaiian/Pacific Islander		43.4		47.0		50.7		53.1		7.3		6.1
White	49.2	64.3	56.0	62.8	55.2	70.9	59.5	69.0	6.0	6.6	3.5	6.2
Socioeconomically Disadvantaged	35.6	30.4	44.0	36.7	43.6	41.1	48.7	46.3	8.0	10.7	4.7	9.6
English Learners	21.9	25.8	33.9	35.8	32.2	35.6	42.1	45.6	10.3	9.8	8.2	9.8
Students with Disabilities	13.4	20.7	20.4	24.1	38.7	31.8	36.2	34.5	25.3	11.1	15.8	10.4

District Overall Percent Proficient Growth



District Program Improvement (PI) status (2010-11)

Current Status: In PI First Year Identified: 2006-2007

School PI Status (2010-11)

School Type	Num. of Schools	Num. in Title I	Num. in PI	Year 1	Year 2	Year 3	Year 4	Year 5
Elementary	3	3	1	0	0	0	1	0
Middle	1	1	1	0	0	0	0	1
Total	4	4	2	0	0	0	1	1

Number of Schools That Made AYP and Academic Performance Index (API)

School Type	AYP 2007	AYP 2008	AYP 2009	AYP 2010	API 2007	API 2008	API 2009	API 2010
Elementary	3	2	3	1	2	2	3	1
Middle	2	1	1	1	1	0	1	0
High	0	0	0	0	0	0	0	0
Total	5	3	4	2	3	2	4	1

2009-10 District Accountability Dashboard

CD: 4970904

County: Sonoma

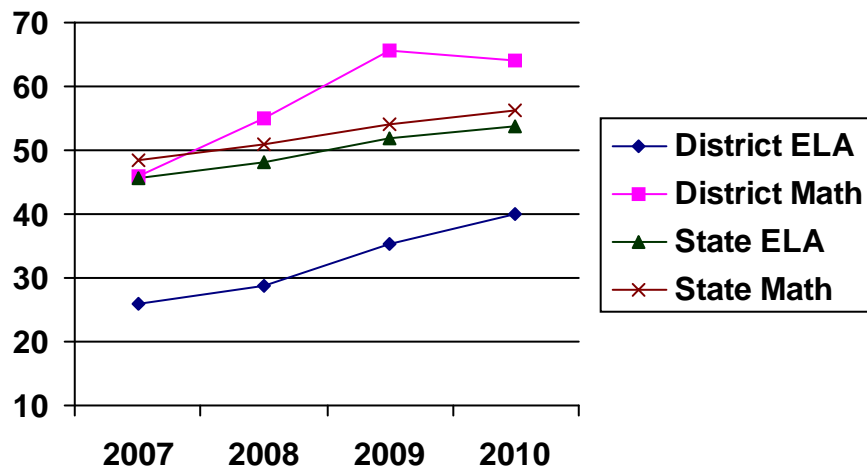
District: Roseland Elementary

District Type: Elementary

Adequate Yearly Progress (AYP) Percent Proficient Over 4 Years

Groups	* 2007 ELA District	2007 ELA State	* 2007 Math District	2007 Math State	** 2010 ELA District	2010 ELA State	** 2010 Math District	2010 Math State	ELA District Change	ELA State Change	Math District Change	Math State Change
Overall	26.0	45.5	46.0	48.5	40.0	53.9	64.0	56.3	14.0	8.4	18.0	7.8
Black/African American	53.8	32.7	46.2	31.1	64.3	41.3	57.1	39.6	10.5	8.6	10.9	8.5
American Indian/Alaska Native	25.0	40.6	43.8	40.9	33.3	46.7	38.9	46.9	8.3	6.1	-4.9	6.0
Asian	51.5	68.9	72.7	76.6	40.0	76.8	72.0	82.5	-11.5	7.9	-0.7	5.9
Filipino		63.0		65.6		71.5		72.0		8.5		6.4
Hispanic	23.1	31.1	44.5	37.0	38.9	41.7	64.7	46.7	15.8	10.6	20.2	9.7
Native Hawaiian/Pacific Islander		43.4		47.0		50.7		53.1		7.3		6.1
White	36.2	64.3	46.8	62.8	57.9	70.9	56.8	69.0	21.7	6.6	10.0	6.2
Socioeconomically Disadvantaged	24.7	30.4	45.7	36.7	38.5	41.1	63.3	46.3	13.8	10.7	17.6	9.6
English Learners	22.8	25.8	44.5	35.8	36.5	35.6	64.0	45.6	13.7	9.8	19.5	9.8
Students with Disabilities	8.4	20.7	25.3	24.1	28.7	31.8	43.9	34.5	20.3	11.1	18.6	10.4

District Overall Percent Proficient Growth



District Program Improvement (PI) status (2010-11)

Current Status: In PI First Year Identified: 2006-2007

School PI Status (2010-11)

School Type	Num. of Schools	Num. in Title I	Num. in PI	Year 1	Year 2	Year 3	Year 4	Year 5
Elementary	2	2	1	0	0	0	1	0
Total	2	2	1	0	0	0	1	0

Number of Schools That Made AYP and Academic Performance Index (API)

School Type	AYP 2007	AYP 2008	AYP 2009	AYP 2010	API 2007	API 2008	API 2009	API 2010
Elementary	1	0	2	1	1	2	2	1
Middle	0	0	0	0	0	0	0	0
High	0	0	0	0	0	0	0	0
Total	1	0	2	1	1	2	2	1

2009-10 District Accountability Dashboard

CD: 3667876

County: San Bernardino

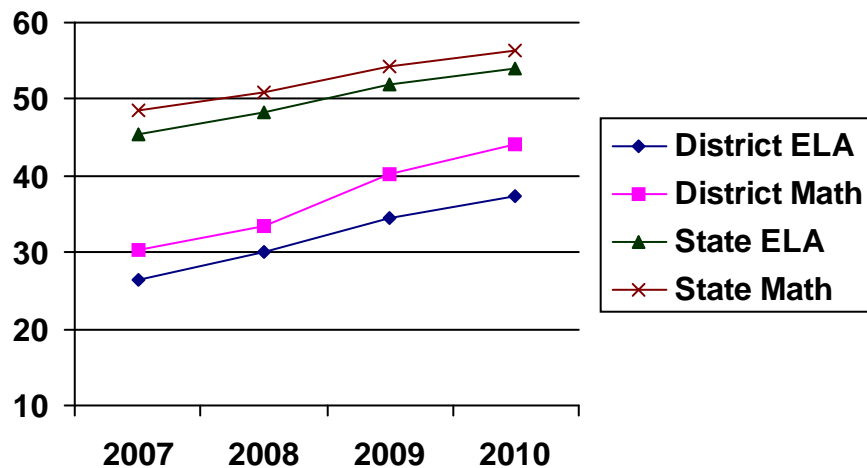
District: San Bernardino City Unified

District Type: Unified

Adequate Yearly Progress (AYP) Percent Proficient Over 4 Years

Groups	* 2007 ELA District	2007 ELA State	* 2007 Math District	2007 Math State	** 2010 ELA District	2010 ELA State	** 2010 Math District	2010 Math State	ELA District Change	ELA State Change	Math District Change	Math State Change
Overall	26.3	45.5	30.4	48.5	37.4	53.9	44.0	56.3	11.1	8.4	13.6	7.8
Black/African American	22.9	32.7	23.4	31.1	33.9	41.3	35.4	39.6	11.0	8.6	12.0	8.5
American Indian/Alaska Native	34.3	40.6	34.6	40.9	39.5	46.7	44.3	46.9	5.2	6.1	9.7	6.0
Asian	44.8	68.9	53.5	76.6	57.3	76.8	69.8	82.5	12.5	7.9	16.3	5.9
Filipino	59.2	63.0	60.8	65.6	65.5	71.5	65.7	72.0	6.3	8.5	4.9	6.4
Hispanic	23.2	31.1	28.9	37.0	34.9	41.7	43.3	46.7	11.7	10.6	14.4	9.7
Native Hawaiian/Pacific Islander	30.3	43.4	30.3	47.0	34.7	50.7	40.0	53.1	4.4	7.3	9.7	6.1
White	43.8	64.3	42.7	62.8	55.5	70.9	57.2	69.0	11.7	6.6	14.5	6.2
Socioeconomically Disadvantaged	22.5	30.4	27.6	36.7	34.9	41.1	42.3	46.3	12.4	10.7	14.7	9.6
English Learners	18.7	25.8	27.2	35.8	30.7	35.6	42.5	45.6	12.0	9.8	15.3	9.8
Students with Disabilities	11.0	20.7	14.0	24.1	25.5	31.8	28.9	34.5	14.5	11.1	14.9	10.4

District Overall Percent Proficient Growth



District Program Improvement (PI) status (2010-11)

Current Status: In PI First Year Identified: 2004-2005

School PI Status (2010-11)

School Type	Num. of Schools	Num. in Title I	Num. in PI	Year 1	Year 2	Year 3	Year 4	Year 5
Elementary	45	45	29	2	2	1	2	22
Middle	10	10	6	0	0	0	1	5
High	9	9	6	1	0	1	0	4
Total	64	64	41	3	2	2	3	31

Number of Schools That Made AYP and Academic Performance Index (API)

School Type	AYP 2007	AYP 2008	AYP 2009	AYP 2010	API 2007	API 2008	API 2009	API 2010
Elementary	15	10	15	13	17	27	28	30
Middle	1	1	1	2	1	4	2	7
High	3	4	2	1	2	2	2	2
Total	19	15	18	16	20	33	32	39

* 2007 Targets: English-language arts (ELA) 23.0% Math 23.7%
 ** 2010 Targets: ELA 56.0% Math 56.4%

2009-10 District Accountability Dashboard

CD: 3467447

County: Sacramento

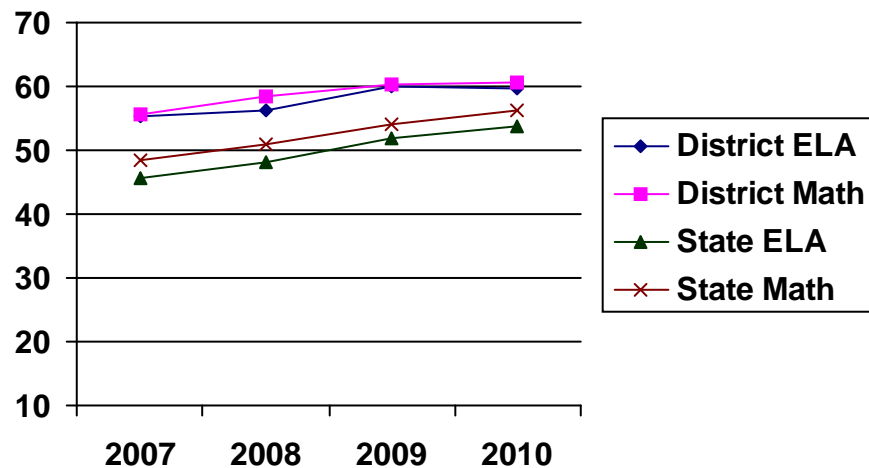
District: San Juan Unified

District Type: Unified

Adequate Yearly Progress (AYP) Percent Proficient Over 4 Years

Groups	* 2007 ELA District	2007 ELA State	* 2007 Math District	2007 Math State	** 2010 ELA District	2010 ELA State	** 2010 Math District	2010 Math State	ELA District Change	ELA State Change	Math District Change	Math State Change
Overall	55.3	45.5	55.5	48.5	59.8	53.9	60.6	56.3	4.5	8.4	5.1	7.8
Black/African American	34.2	32.7	34.4	31.1	39.0	41.3	38.7	39.6	4.8	8.6	4.3	8.5
American Indian/Alaska Native	51.5	40.6	50.0	40.9	56.1	46.7	58.3	46.9	4.6	6.1	8.3	6.0
Asian	72.3	68.9	76.4	76.6	78.5	76.8	82.1	82.5	6.2	7.9	5.7	5.9
Filipino	64.6	63.0	64.2	65.6	68.6	71.5	65.6	72.0	4.0	8.5	1.4	6.4
Hispanic	36.4	31.1	39.2	37.0	40.9	41.7	45.6	46.7	4.5	10.6	6.4	9.7
Native Hawaiian/Pacific Islander	49.3	43.4	54.1	47.0	49.8	50.7	50.9	53.1	0.5	7.3	-3.2	6.1
White	60.5	64.3	59.9	62.8	65.8	70.9	65.6	69.0	5.3	6.6	5.7	6.2
Socioeconomically Disadvantaged	35.7	30.4	40.4	36.7	42.7	41.1	46.9	46.3	7.0	10.7	6.5	9.6
English Learners	25.4	25.8	38.2	35.8	34.0	35.6	47.0	45.6	8.6	9.8	8.8	9.8
Students with Disabilities	22.3	20.7	24.9	24.1	32.7	31.8	32.9	34.5	10.4	11.1	8.0	10.4

District Overall Percent Proficient Growth



District Program Improvement (PI) status (2010-11)

Current Status: In PI First Year Identified: 2008-2009

School PI Status (2010-11)

School Type	Num. of Schools	Num. in Title I	Num. in PI	Year 1	Year 2	Year 3	Year 4	Year 5
Elementary	12	12	8	3	0	0	2	3
Middle	2	2	2	0	0	0	0	2
High	7	7	1	0	1	0	0	0
Total	21	21	11	3	1	0	2	5

Number of Schools That Made AYP and Academic Performance Index (API)

School Type	AYP 2007	AYP 2008	AYP 2009	AYP 2010	API 2007	API 2008	API 2009	API 2010
Elementary	36	33	27	17	20	22	28	21
Middle	6	3	3	1	4	3	3	4
High	14	9	8	8	4	2	2	2
Total	56	45	38	26	28	27	33	27

* 2007 Targets: English-language arts (ELA) 23.0% Math 23.7%
** 2010 Targets: ELA 56.0% Math 56.4%

2009-10 District Accountability Dashboard

CD: 3066670

County: Orange

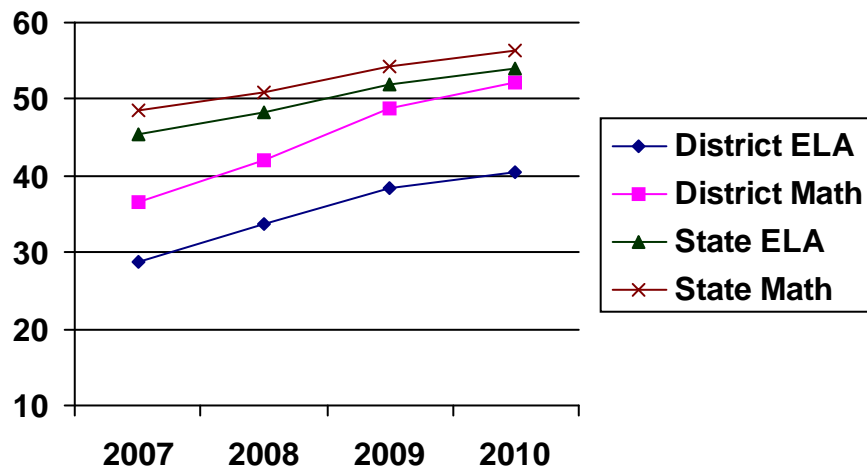
District: Santa Ana Unified

District Type: Unified

Adequate Yearly Progress (AYP) Percent Proficient Over 4 Years

Groups	* 2007 ELA District	2007 ELA State	* 2007 Math District	2007 Math State	** 2010 ELA District	2010 ELA State	** 2010 Math District	2010 Math State	ELA District Change	ELA State Change	Math District Change	Math State Change
Overall	28.7	45.5	36.6	48.5	40.5	53.9	52.2	56.3	11.8	8.4	15.6	7.8
Black/African American	41.8	32.7	42.1	31.1	61.4	41.3	60.2	39.6	19.6	8.6	18.1	8.5
American Indian/Alaska Native	10.0	40.6	25.0	40.9		46.7		46.9		6.1		6.0
Asian	62.1	68.9	70.6	76.6	74.2	76.8	81.6	82.5	12.1	7.9	11.0	5.9
Filipino	61.8	63.0	57.4	65.6	67.7	71.5	76.9	72.0	5.9	8.5	19.5	6.4
Hispanic	27.0	31.1	35.0	37.0	39.0	41.7	51.1	46.7	12.0	10.6	16.1	9.7
Native Hawaiian/Pacific Islander	40.0	43.4	51.3	47.0	42.5	50.7	48.7	53.1	2.5	7.3	-2.6	6.1
White	59.7	64.3	58.4	62.8	69.2	70.9	67.4	69.0	9.5	6.6	9.0	6.2
Socioeconomically Disadvantaged	25.9	30.4	34.6	36.7	38.3	41.1	50.8	46.3	12.4	10.7	16.2	9.6
English Learners	20.6	25.8	31.0	35.8	32.2	35.6	47.5	45.6	11.6	9.8	16.5	9.8
Students with Disabilities	12.7	20.7	18.0	24.1	21.9	31.8	29.1	34.5	9.2	11.1	11.1	10.4

District Overall Percent Proficient Growth



District Program Improvement (PI) status (2010-11)

Current Status: In PI First Year Identified: 2004-2005

School PI Status (2010-11)

School Type	Num. of Schools	Num. in Title I	Num. in PI	Year 1	Year 2	Year 3	Year 4	Year 5
Elementary	35	35	20	1	2	0	0	17
Middle	9	9	9	1	1	0	0	7
High	10	10	7	0	0	1	3	3
Total	54	54	36	2	3	1	3	27

Number of Schools That Made AYP and Academic Performance Index (API)

School Type	AYP 2007	AYP 2008	AYP 2009	AYP 2010	API 2007	API 2008	API 2009	API 2010
Elementary	13	16	22	11	24	30	32	26
Middle	2	2	0	0	0	6	3	5
High	2	3	4	1	2	1	3	2
Total	17	21	26	12	26	37	38	33

* 2007 Targets: English-language arts (ELA) 23.0% Math 23.7%
 ** 2010 Targets: ELA 56.0% Math 56.4%

2009-10 District Accountability Dashboard

CD: 4510454

County: Shasta

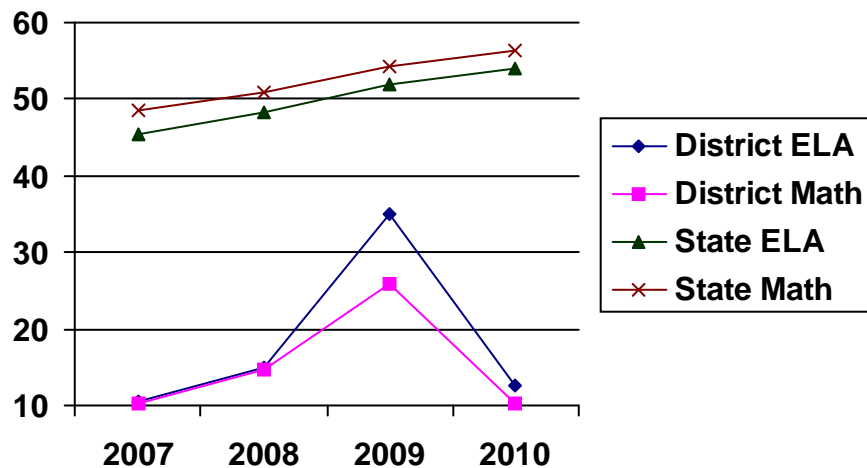
District: Shasta County Office of Education

District Type: Unified

Adequate Yearly Progress (AYP) Percent Proficient Over 4 Years

Groups	* 2007 ELA District	2007 ELA State	* 2007 Math District	2007 Math State	** 2010 ELA District	2010 ELA State	** 2010 Math District	2010 Math State	ELA District Change	ELA State Change	Math District Change	Math State Change
Overall	10.6	45.5	10.2	48.5	12.7	53.9	10.2	56.3	2.1	8.4	0.0	7.8
Black/African American	16.7	32.7		31.1		41.3		39.6		8.6		8.5
American Indian/Alaska Native		40.6		40.9		46.7		46.9		6.1		6.0
Asian		68.9		76.6		76.8		82.5		7.9		5.9
Filipino		63.0		65.6		71.5		72.0		8.5		6.4
Hispanic		31.1		37.0		41.7	9.1	46.7		10.6		9.7
Native Hawaiian/Pacific Islander		43.4		47.0		50.7		53.1		7.3		6.1
White	11.6	64.3	12.2	62.8	13.8	70.9	8.1	69.0	2.2	6.6	-4.1	6.2
Socioeconomically Disadvantaged	11.0	30.4	10.1	36.7	11.8	41.1	10.0	46.3	0.8	10.7	-0.1	9.6
English Learners		25.8		35.8		35.6		45.6		9.8		9.8
Students with Disabilities	11.0	20.7	7.7	24.1	18.5	31.8	12.0	34.5	7.5	11.1	4.3	10.4

District Overall Percent Proficient Growth



District Program Improvement (PI) status (2010-11)

Current Status: In PI First Year Identified: 2010-2011

School PI Status (2010-11)

School Type	Num. of Schools	Num. in Title I	Num. in PI	Year 1	Year 2	Year 3	Year 4	Year 5
Elementary	0	0	0	0	0	0	0	0
High	2	2	1	0	0	0	0	1
Total	2	2	1	0	0	0	0	1

Number of Schools That Made AYP and Academic Performance Index (API)

School Type	AYP 2007	AYP 2008	AYP 2009	AYP 2010	API 2007	API 2008	API 2009	API 2010
Elementary	0	1	1	0	0	0	0	0
Middle	0	0	0	0	0	0	0	0
High	1	1	1	3	0	0	0	1
Total	1	2	2	3	0	0	0	1

* 2007 Targets: English-language arts (ELA) 23.0% Math 23.7%
** 2010 Targets: ELA 56.0% Math 56.4%

2009-10 Accountability Dashboard

CDS: 19101990102020

County: Los Angeles

School: Today's Fresh Charter

School Type: Direct Funded Charter

Adequate Yearly Progress (AYP) Proficient for 1 Year

Groups	*2010 ELA Charter	**2010 ELA State	*2010 Math Charter	**2010 Math State
Overall	35.3	53.9	47.1	56.3
Black/African American	32.4	41.3	40.0	39.6
American Indian/Alaska Native	--	46.7	--	46.9
Asian	--	76.8	--	82.5
Filipino	--	71.5	--	72.0
Hispanic	39.6	41.7	60.6	46.7
Native Hawaiian/Pacific Islander	--	50.7	--	53.1
White	--	70.9	--	69.0
Socioeconomically Disadvantaged	35.1	41.1	47.2	46.3
English Learners	42.9	35.6	63.9	45.6
Students with Disabilities	18.8	31.8	21.7	34.5

*2010 Targets: English Language Arts (ELA) 56.8% Math 58.0%

**2010 Targets: English Language Arts (ELA) 56.0% Math 56.4%

Met all ELA percent proficient rate criteria: No

Met all Math percent proficient rate criteria: Yes

Made AYP: No

Made API: Yes

Program Improvement (PI) status

Current Status: In PI, Year 2

First Year Identified: 2008–09

2009-10 District Accountability Dashboard

CD: 3476505

County: Sacramento

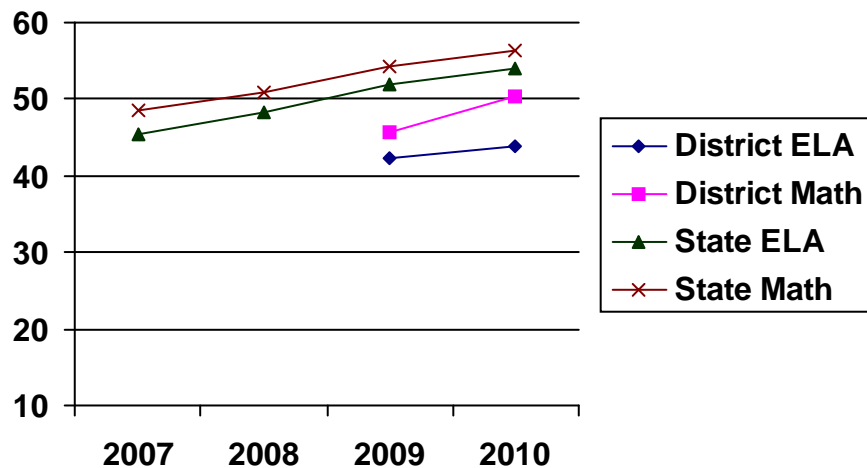
District: Twin Rivers Unified

District Type: Unified

Adequate Yearly Progress (AYP) Percent Proficient Over 4 Years

Groups	* 2007 ELA District	2007 ELA State	* 2007 Math District	2007 Math State	** 2010 ELA District	2010 ELA State	** 2010 Math District	2010 Math State	ELA District Change	ELA State Change	Math District Change	Math State Change
Overall		45.5		48.5	43.9	53.9	50.3	56.3		8.4		7.8
Black/African American		32.7		31.1	33.9	41.3	36.8	39.6		8.6		8.5
American Indian/Alaska Native		40.6		40.9	35.5	46.7	45.2	46.9		6.1		6.0
Asian		68.9		76.6	46.5	76.8	59.1	82.5		7.9		5.9
Filipino		63.0		65.6	62.5	71.5	65.3	72.0		8.5		6.4
Hispanic		31.1		37.0	39.0	41.7	46.9	46.7		10.6		9.7
Native Hawaiian/Pacific Islander		43.4		47.0	36.2	50.7	48.6	53.1		7.3		6.1
White		64.3		62.8	54.0	70.9	58.2	69.0		6.6		6.2
Socioeconomically Disadvantaged		30.4		36.7	40.4	41.1	48.0	46.3		10.7		9.6
English Learners		25.8		35.8	36.2	35.6	49.3	45.6		9.8		9.8
Students with Disabilities		20.7		24.1	26.2	31.8	30.7	34.5		11.1		10.4

District Overall Percent Proficient Growth



District Program Improvement (PI) status (2010-11)

Current Status: In PI First Year Identified: 2010-2011

School PI Status (2010-11)

School Type	Num. of Schools	Num. in Title I	Num. in PI	Year 1	Year 2	Year 3	Year 4	Year 5
Elementary	36	36	22	9	4	0	1	8
Middle	7	7	6	0	1	0	1	4
High	6	6	6	1	1	1	1	2
Total	49	49	34	10	6	1	3	14

Number of Schools That Made AYP and Academic Performance Index (API)

School Type	AYP 2007	AYP 2008	AYP 2009	AYP 2010	API 2007	API 2008	API 2009	API 2010
Elementary	0	0	16	7	0	0	18	20
Middle	0	0	1	1	0	0	3	3
High	0	0	0	2	0	0	0	1
Total	0	0	17	10	0	0	21	24

* 2007 Targets: English-language arts (ELA) 23.0% Math 23.7%
 ** 2010 Targets: ELA 56.0% Math 56.4%