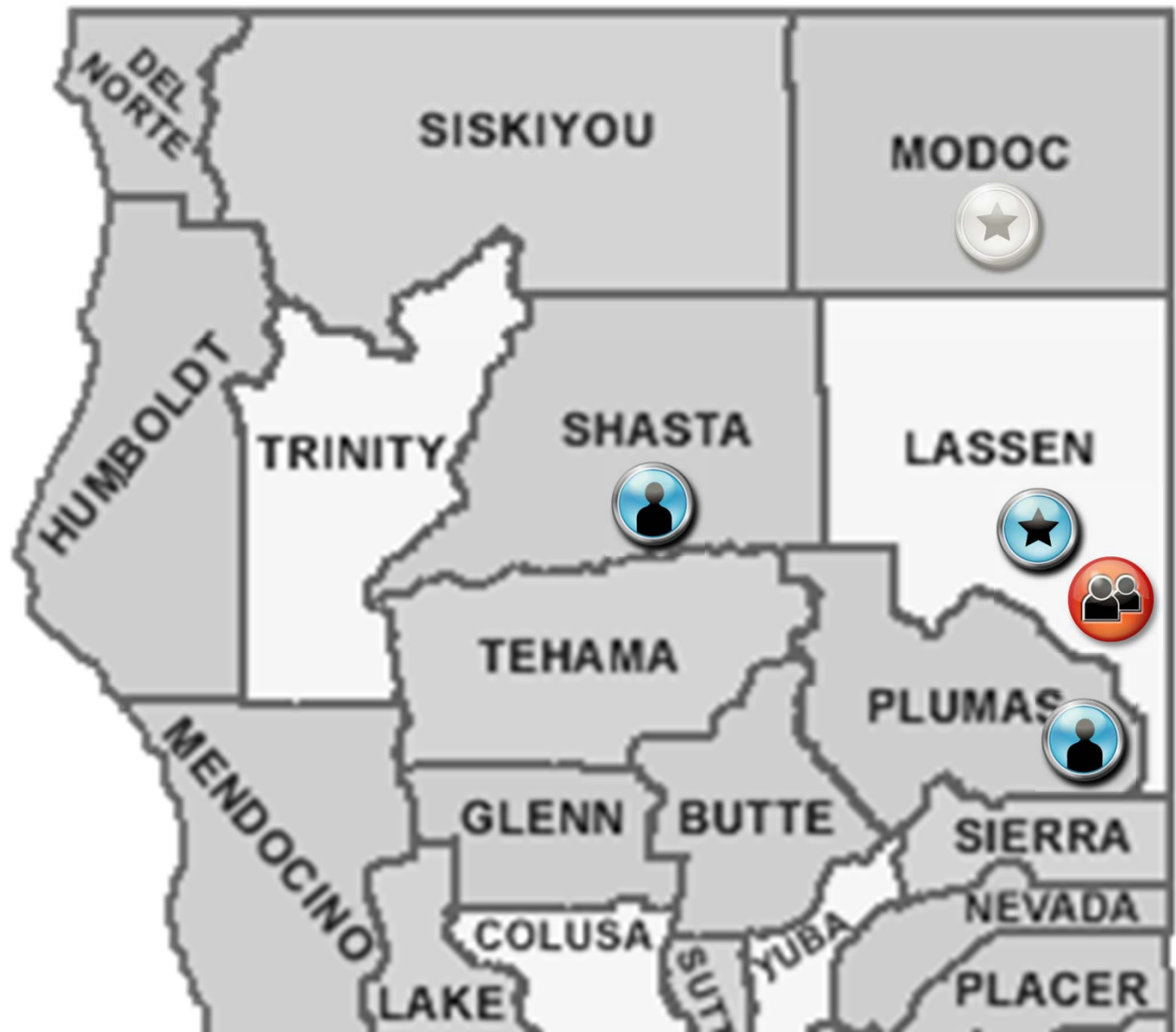


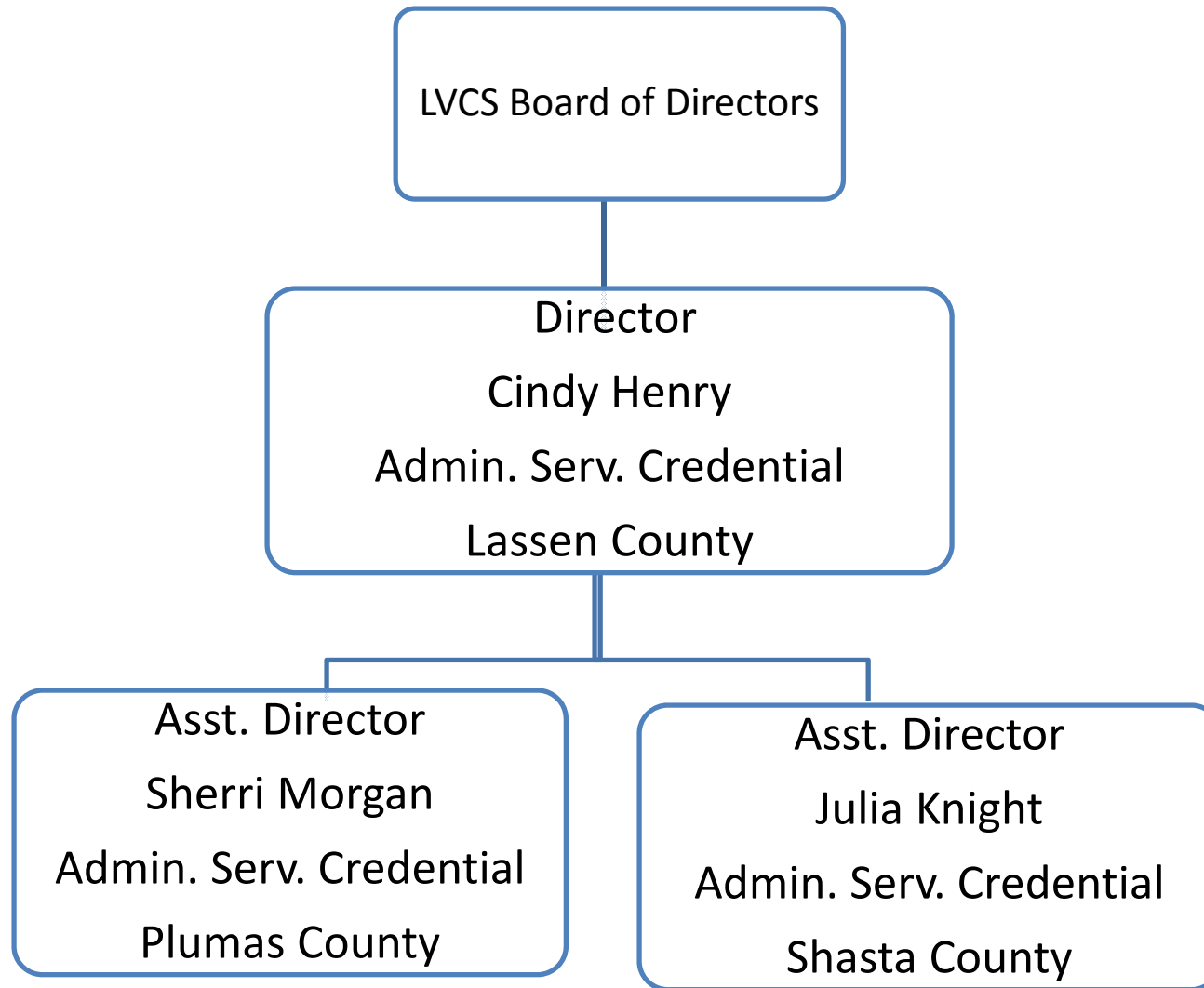
This document contains presentation materials for the Long Valley Charter School as presented at the California State Board of Education (SBE) Meeting on March 7-8, 2012.

This document is available at the California State Board of Education Web site at  
<http://www.cde.ca.gov/be/ag/ag/yr12/documents/mar12item16presentation.pdf>



Doyle Classroom-Based Program

# Leadership Structure



Excerpt from July 2011 letter from CDE:

In an effort to remedy these concerns, the CDE suggests that LVCS take the following actions:

**Increased Enrollment**—Reduce student enrollment to conform to the terms of the charter petition and Memorandum of Understanding. According to CDE calculations, enrollment should be a maximum of 340 students.

**Brown Act and Conflict of Interest**—Provide evidence of Brown Act Training/Brown Act Training and conflict of interest training for all current members of the LVCS board of directors.

**Fiscal Capacity**—Describe how the LVCS board of directors will account for the duties of the position of Financial Director/Business Advisor.

**Graduation Policy**—Rescind the new graduation policy and reinstate the original graduation policy approved by the SBE.

Excerpt from October 25 letter from CDE:

In an effort to remedy these concerns, the CDE suggests that LVCS take the following actions:

**Increased Enrollment**—Reduce student enrollment to conform to the terms of the charter petition and Memorandum of Understanding. According to CDE calculations, enrollment should be a maximum of 340 students.

**Resource Centers** – Send letters to families affected by March 8, 2012, and cease to operate resource centers outside of Lassen County by June 29, 2012.

**Independent Study Education Program** – Cease to operate out of county Resource Centers due to inability to access resources.

MATERIAL REVISION  
AND PROGRAMATIC  
CHANGES

## Proposal to resolve CDE concerns (October 27, 2011):

- ✓ Board Resolution formally apologizing for errors
- ✓ Board training through Education Synergy Consultants, CCSA, Lassen County Office of Education and MYM
- ✓ Letter to all SBE charters explaining importance of following MOU
- ✓ Requested material revision to charter petition
- ✓ Suggested extra reporting in order to document both academic and fiscal quality of our program
- ✓ Asked that CDE visit resource centers at our expense to observe the learning that takes place



Win-Win

TIME

