



# Local Control Funding Formula (LCFF) Statewide Fingertip Facts 2014–15 Fiscal Year – Annual Apportionment (as of February 2016)

Prepared by: California Department of Education  
School Fiscal Services Division

## I. 2014–15 AT A GLANCE

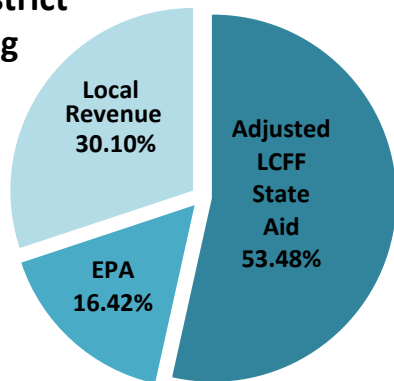


### LCFF Funding Detail

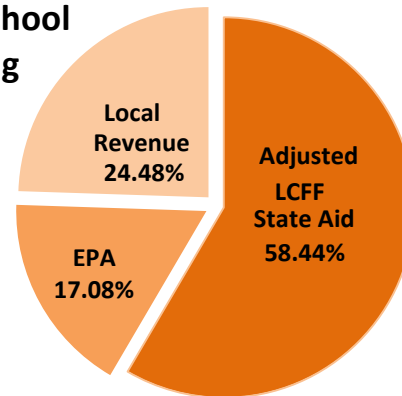
Sources	School Districts	Charter Schools	School District & Charter Subtotal	County Offices of Education (COEs)	Statewide Total
LCFF State Aid before Minimum State Aid (MSA)	\$ 22,673,004,023	\$ 2,309,614,802	\$ 24,982,618,825	\$ 422,388,863	\$ 25,405,007,688
Additional State Aid for MSA Guarantee	121,116,191	839,506	121,955,697	44,958,430	166,914,127
Adjusted LCFF State Aid (subtotal)	22,794,120,214	2,310,454,308	25,104,574,522	467,347,293	25,571,921,815
Education Protection Account (EPA) State Aid	7,000,179,249	675,499,612	7,675,678,861	78,167,569	7,753,846,430
Local Revenue/In-Lieu of Property Taxes*	12,829,296,003	967,758,590	13,797,054,593	482,722,095	14,279,776,688
<b>Total LCFF Funding Sources</b>	<b>\$ 42,623,595,466</b>	<b>\$ 3,953,712,510</b>	<b>\$ 46,577,307,976</b>	<b>\$ 1,028,236,957</b>	<b>\$ 47,605,544,933</b>

\*Amount does not include excess local revenue.

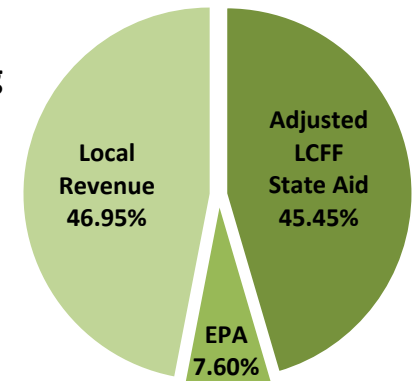
### School District Funding



### Charter School Funding



### COE Funding



## I. 2014–15 AT A GLANCE

Remaining Need Calculation	School Districts	Charter Schools	School District & Charter Subtotal	COEs	Total
2014–15 LCFF Target Entitlement	\$ 52,838,695,618	\$ 4,897,326,884	\$ 57,736,022,502	\$ 799,211,905	\$ 58,535,234,407
Less LCFF Floor, OR LCFF Target Amount for LEAs Funded at the LCFF Target*	(37,948,729,121)	(3,544,200,290)	(41,492,929,411)	(786,292,278)	(42,279,222,221)
Less Current Year Gap Funding (Based on Statewide Gap Rate of 30.16% for Districts and Charters & 100% for COEs)	(4,490,837,984)	(408,105,162)	(4,898,943,146)	(12,919,725)	(4,911,862,871)
<b>Statewide Remaining Need</b>	<b>\$ 10,399,128,513</b>	<b>\$ 945,021,432</b>	<b>\$ 11,344,149,945</b>	<b>\$ 0</b>	<b>\$ 11,344,149,945</b>

\*COEs may be funded above LCFF Target based on “hold harmless” provisions of *Education Code* Section 2575(g)(2).

## II. COUNTY OFFICE OF EDUCATION DATA

### LCFF Funding Summary

LCFF Floor and Gap vs. Hold Harmless	Number of COEs	Amount
Funding Based on LCFF Floor and Gap per <i>Education Code</i> Section 2575(g)(1)	21	\$ 250,773,135
Funding Based on “Hold Harmless” provisions of <i>Education Code</i> Section 2575(g)(2)	37	\$ 732,301,446

Minimum State Aid (MSA)	
Number of COEs Receiving Additional State Aid for MSA Guarantee	14
Amount of Additional State Aid for MSA Guarantee	\$ 44,958,430

### LCFF Target Entitlement Calculation

LCFF Target Components	Number of COEs Represented	Amount
Base Grant Funding	54	\$ 221,603,537
Supplemental Grant Funding	54	69,879,526
Concentration Grant Funding	54	<u>31,173,773</u>
Alternative Education Grant (subtotal)		\$ 322,656,836
Operations Grant Funding	58	443,042,804
Add-on Funding	38	<u>33,512,265</u>
<b>Total LCFF Target Entitlement</b>		<b>\$ 799,211,905</b>

Alternative Education Grant ADA	
Non-Juvenile Court School ADA	11,489.90
Juvenile Court School ADA	7,916.41
<b>Total County Funded ADA</b>	<b>19,588.12</b>
Unduplicated Pupil Percentage (UPP)	
COEs’ Average UPP (Non-Juvenile Court School)	85.88%
Lowest non-zero UPP (Non-Juvenile Court School)	47.44%

### III. SCHOOL DISTRICT AND CHARTER SCHOOL DATA

#### LCFF Transition Entitlement Summary

LCFF Transition Components	School Districts Receiving Funding			Charter Schools Receiving Funding			Total	
	Number	% of Districts	Amount	Number	% of Charters	Amount	Number of LEAs	Amount
LCFF Floor Entitlement	906	96%	\$ 37,902,757,922	1,144	99%	\$ 3,517,171,564	2,050	\$ 41,419,929,486
Current Year Gap Funding	906	96%	4,490,837,984	1,144	99%	408,105,162	2,050	4,898,943,146
LCFF Target Entitlement	41	4%	45,971,199	16	1%	27,028,726	57	72,999,925
Economic Recovery Target Payments	122	13%	14,799,047	25	2%	510,977	147	15,310,024
State Aid for MSA Guarantee	166	18%	121,116,191	18	2%	839,506	184	121,955,697
Miscellaneous Adjustments	10	1%	2,526,938	<i>not applicable to charter schools</i>			10	2,526,938
<b>Total LCFF Transition Entitlement</b>			<b>\$ 42,578,009,281*</b>			<b>\$ 3,953,655,935*</b>		<b>\$ 46,531,665,216*</b>

\*Total LCFF Transition Entitlement is less than Total LCFF Funding Sources (shown on page 1) due to EPA State Aid minimum guarantee.

#### LCFF Target Entitlement Calculation

LCFF Target Components	School Districts Represented			Charter Schools Represented			Total	
	Number	% of Districts	Amount	Number	% of Charters	Amount	Number of LEAs	Amount
Base Grant Funding*	913	96%	\$ 42,873,855,894	1,160	100%	\$ 4,145,496,227	2,073	\$ 47,019,352,121
Supplemental Grant Funding	947	100%	5,407,599,096	1,160	100%	505,255,151	2,107	5,912,854,247
Concentration Grant Funding	555	59%	3,150,490,889	652	56%	246,575,506	1,207	3,397,066,395
Necessary Small School (NSS) Allowance	116	12%	102,821,714	<i>not applicable to charter schools</i>			116	102,821,714
Add-on Funding	902	95%	1,303,928,025	<i>not applicable to charter schools</i>			902	1,303,928,025
<b>Total LCFF Target Entitlement</b>			<b>\$ 52,838,695,618</b>			<b>\$ 4,897,326,884</b>		<b>\$ 57,736,022,502</b>

\*Some school districts are fully funded through NSS and do not receive Base Grant Funding.

#### Total Funded Average Daily Attendance (ADA) by Grade Span (includes NSS ADA)

LEA Type	Number of LEAs	TK/K-3	4-6	7-8	9-12	TOTAL ADA
School Districts	947	1,731,384.73	1,263,481.44	827,081.52	1,663,769.18	5,485,716.87
Charter Schools	1,160	145,689.06	108,148.67	83,045.28	188,214.09	525,097.10
<b>TOTAL</b>	<b>2,107</b>	<b>1,877,073.79</b>	<b>1,371,630.11</b>	<b>910,126.80</b>	<b>1,851,983.27</b>	<b>6,010,813.97</b>

DATA SOURCE: 2014–15 Annual Apportionment certified funding exhibits for all active LEAs for the complete fiscal year (<http://www.cde.ca.gov/fg/aa/pa/pa1516.asp>)

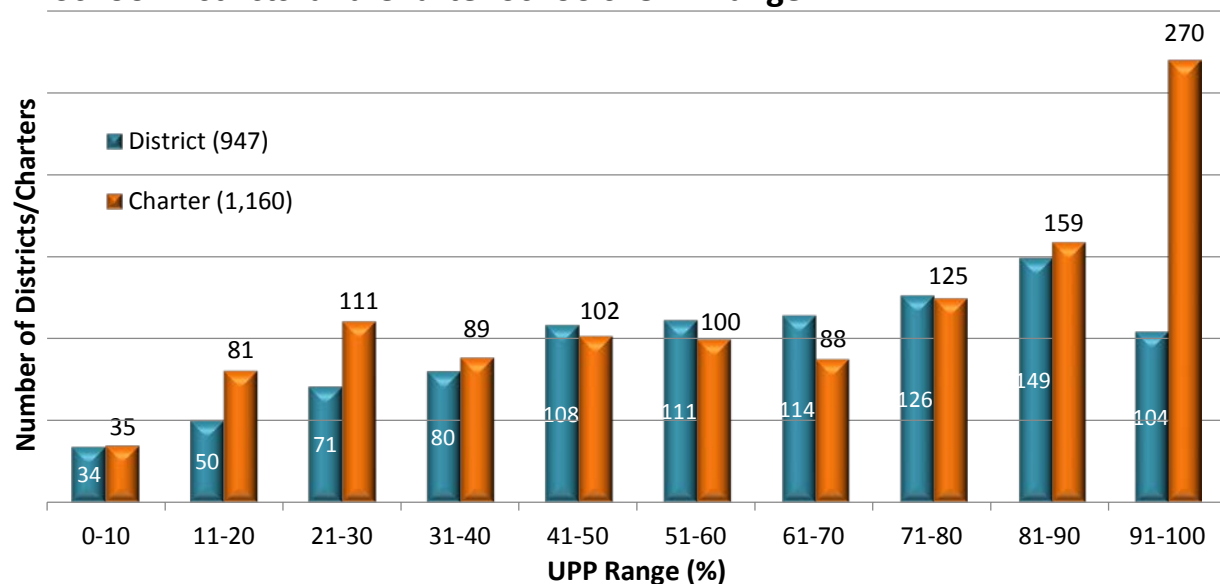
### III. SCHOOL DISTRICT AND CHARTER SCHOOL DATA

#### Unduplicated Pupil Percentage (UPP)\*

School Districts' Average UPP	59.67%
Districts with UPP of 100%	4
Districts with UPP of zero	0
Charter Schools' Average UPP	62.42%
Charters with UPP of 100%	14
Charters with UPP of zero	0

\*UPP is based on prior and current year data and is used in determining the LEA's Supplemental and Concentration Grant funding in the LCFF Target entitlement.

#### School Districts' and Charter Schools' UPP Range



#### Ten Largest School Districts (based on ADA)

School District Name	ADA	Target per ADA**	UPP
Los Angeles Unified	484,537.89	\$11,327	83.49%
San Diego Unified	106,167.04	\$9,816	63.26%
Long Beach Unified	77,341.56	\$9,704	69.54%
Fresno Unified	66,707.35	\$10,537	87.38%
Elk Grove Unified	59,626.53	\$8,961	58.92%
Corona-Norco Unified	51,976.91	\$8,664	47.73%
Santa Ana Unified	51,974.18	\$10,855	94.28%
San Francisco Unified	51,118.73	\$10,272	69.37%
Capistrano Unified	49,003.58	\$8,315	23.55%
San Bernardino City Unified	47,522.66	\$11,161	93.15%

#### Ten Largest Charter Schools (based on ADA)

Charter School Name	ADA	Target per ADA**	UPP
River Springs Charter	5,320.43	\$8,389	46.52%
Visions In Education	4,752.28	\$8,811	52.39%
Granada Hills Charter High	4,268.82	\$9,616	51.88%
El Camino Real Charter High	3,576.22	\$9,112	22.97%
Options for Youth-Victorville Charter	3,493.13	\$11,058	80.32%
California Virtual Academy @ Los Angeles	3,467.05	\$9,078	60.92%
Opportunities for Learning - Baldwin Park II	3,450.81	\$11,540	87.03%
Grover Cleveland Charter High	3,106.07	\$10,340	65.98%
Birmingham Community Charter High	3,025.67	\$11,430	84.78%
Opportunities for Learning - Santa Clarita	2,942.51	\$10,580	72.41%

\*\*LCFF Target per ADA is derived by dividing LCFF Target Entitlement by Funded ADA. This amount does not represent actual funding. Target per ADA rates vary due to differences in UPP, the distribution of ADA between the grade spans, and other components of the Target Entitlement.