

Local Control Funding Formula (LCFF) Statewide Fingertip Facts
2024–25 Fiscal Year – Second Principal Apportionment (as of June 2025)

Prepared by: CA Dept. of Education
School Fiscal Services Division

2024–25 AT A GLANCE

Funding Sources:

- \$40.2 Billion from State General Fund
- \$27.0 Billion from Local Revenue
- \$13.2 Billion from Education Protection Account (EPA)



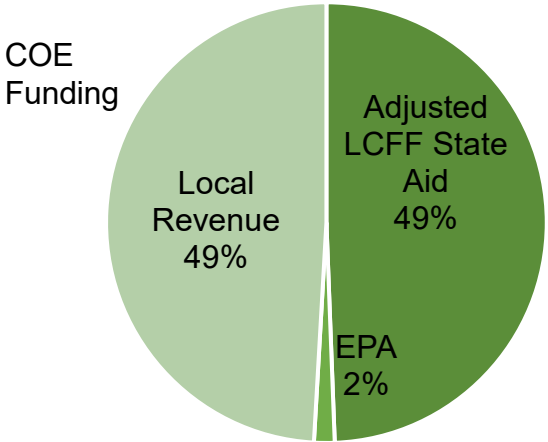
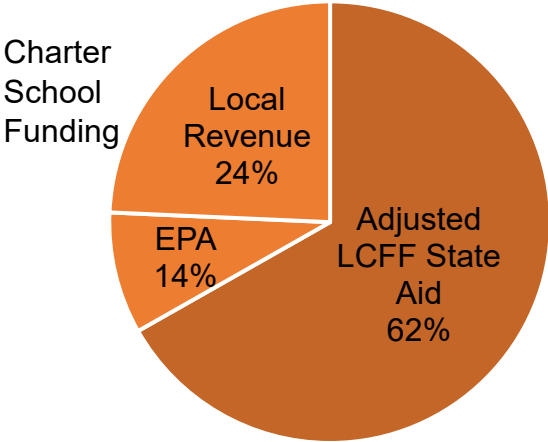
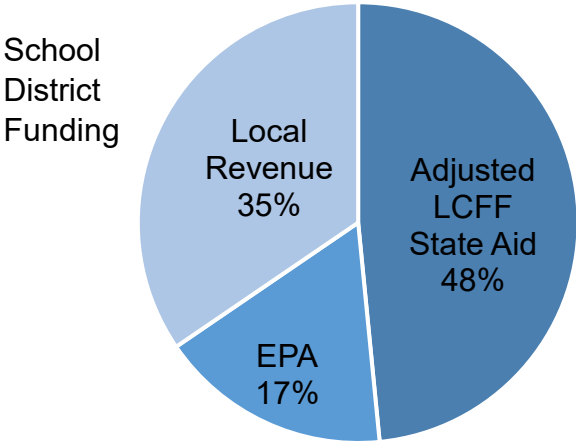
Funding Apportioned:

- \$69.4 Billion to School Districts
- \$9.4 Billion to Charter Schools
- \$1.5 Billion to County Offices of Education (COE)

LCFF Funding Detail

Sources	School Districts	Charter Schools	School District & Charter Subtotal	County Offices of Education	Statewide Total
LCFF State Aid before Minimum State Aid (MSA)	\$33,359,923,928	\$5,818,914,454	\$39,178,838,382	\$419,050,043	\$39,597,888,425
Additional State Aid for MSA Guarantee, Other LCFF State Aid for COEs	259,225,642	257,846	259,483,488	305,259,823	564,743,311
Adjusted LCFF State Aid (subtotal)	33,619,149,570	5,819,172,300	39,438,321,870	724,309,866	40,162,631,736
EPA State Aid	11,820,895,789	1,312,713,525	13,133,609,314	32,028,048	13,165,637,362
Local Revenue/In-lieu of Property Taxes ¹	23,961,774,224	2,296,360,439	26,258,134,663	734,349,029	26,992,483,692
Total LCFF Funding Sources	\$69,401,819,583	\$9,428,246,264	\$78,830,065,847	\$1,490,686,943	\$80,320,752,790

¹Amounts in table and pie charts do not include excess local revenue.



SCHOOL DISTRICT AND CHARTER SCHOOL DATA

Summary

LCFF Entitlement Component	District Count	% of Districts	District Funding	Charter Count	% of Charters	Charter Funding	Total Count	Total Funding
Base Grant Funding ²	899	95.9%	\$54,384,892,740	1,257	100.0%	\$7,748,212,003	2,156	\$62,133,104,743
Supplemental Grant Funding	937	100.0%	7,103,796,780	1,256	99.9%	983,359,718	2,193	8,087,156,498
Concentration Grant Funding	579	61.8%	5,602,990,766	795	63.2%	635,646,726	1,374	6,238,637,492
Necessary Small School (NSS) Allowance	108	11.5%	146,593,218	n/a	n/a	n/a	108	146,593,218
Add-on Funding	934	99.7%	1,845,786,794	669	53.2%	60,769,971	1603	1,906,556,765
Miscellaneous Adjustments ³	3	0.3%	-360,900	0	0.0%	0	3	-360,900
State Aid for MSA Guarantee	158	16.9%	259,225,642	7	0.6%	257,846	165	259,483,488
Total LCFF Entitlement ⁴	n/a	n/a	\$69,342,925,040	n/a	n/a	\$9,428,246,264	n/a	\$78,771,171,304

²Some school districts are fully funded through NSS and do not receive Base Grant Funding; some charter schools have no Base Grant Funding due to zero funded ADA.

³ Adjustments for special legislation, instructional time penalties, and class size penalties.

⁴Total LCFF Entitlement is less than Total LCFF Funding Sources (shown on page 1) due to EPA State Aid minimum guarantee.

Ten Largest School Districts (based on Funded ADA)

School District Name	ADA	UPP
Los Angeles Unified	351,251.13	86.00%
San Diego Unified	88,482.39	60.51%
Fresno Unified	63,249.61	88.40%
Long Beach Unified	60,656.05	64.39%
Elk Grove Unified	59,340.57	55.98%
Corona-Norco Unified	48,117.75	72.28%
San Francisco Unified	45,638.35	60.23%
San Bernardino City Unified	42,357.19	92.43%
Clovis Unified	40,512.91	47.80%
Capistrano Unified	39,811.93	35.99%

Ten Largest Charter Schools (based on Funded ADA)

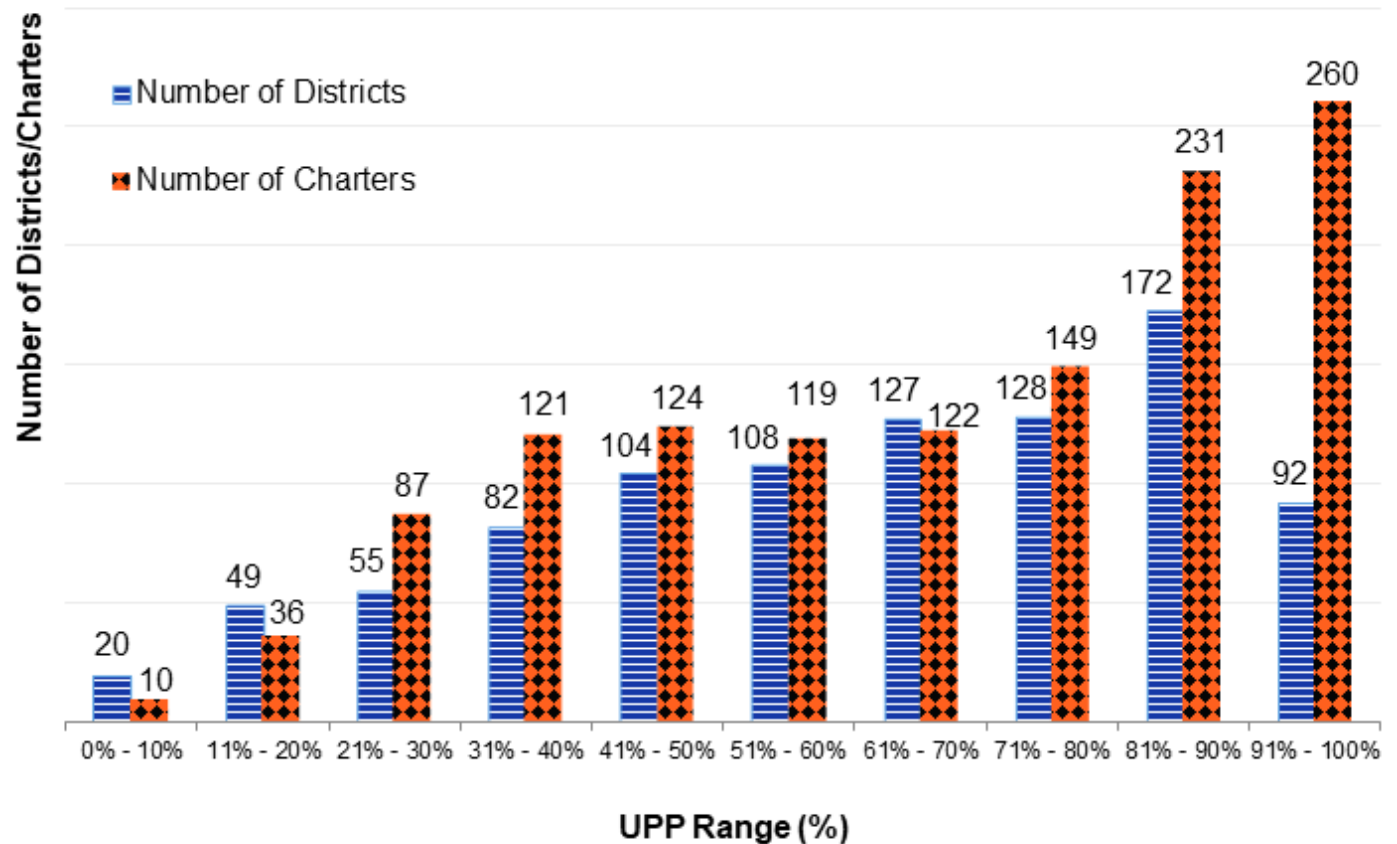
Charter School Name	ADA	UPP
River Springs Charter	7,582.87	59.40%
Blue Ridge Academy	7,547.17	41.53%
Visions In Education	7,254.42	58.10%
Pacific Coast Academy	6,537.40	38.83%
Mission Vista Academy	6,269.87	42.99%
Highlands Community Charter	6,007.05	99.44%
Heartland Charter	5,899.27	43.92%
California Virtual Academy @ Los Angeles	5,640.99	75.83%
Granada Hills Charter	5,601.90	49.69%
Cabrillo Point Academy	5,484.16	34.18%

Total Funded ADA by Grade Span (includes NSS ADA)

LEA Type	Number of LEAs	Grades TK/K-3	Grades 4-6	Grades 7-8	Grades 9-12	TOTAL ADA
School Districts	937	1,458,779.91	1,097,263.00	734,549.44	1,563,254.31	4,853,846.66
Charter Schools	1,259	192,741.09	141,362.85	112,438.38	240,623.96	687,166.28
TOTAL	2,196	1,651,521.00	1,238,625.85	846,987.82	1,803,878.27	5,541,012.94

Unduplicated Pupil Percentage (UPP) Ranges for School Districts and Charter Schools

UPP Range	District Count	Charter Count
0% - 10%	20	10
11% - 20%	49	36
21% - 30%	55	87
31% - 40%	82	121
41% - 50%	104	124
51% - 60%	108	119
61% - 70%	127	122
71% - 80%	128	149
81% - 90%	172	231
91% - 100%	92	260
Total	937	1,259



COUNTY OFFICE OF EDUCATION DATA

LCFF Funding Summary

LCFF Entitlement	Number of COEs	Amount
Funding Based on LCFF Target*	47	\$780,833,954
Funding Based on "Hold Harmless" provisions of <i>EC</i> Section 2575(g)(2)	11	\$403,962,214

⁵Final determination of LEAs funded at the LCFF Target is made at the Second Principal (P-2) Apportionment.

LCFF Target Entitlement Calculation

LCFF Target Components	Number of COEs	Amount
Base Grant Funding	52	\$160,074,000
Supplemental Grant Funding	49	49,119,001
Concentration Grant Funding	49	21,257,670
Alternative Education Grant (subtotal)	n/a	\$230,450,671
Operations Grant Funding	58	839,719,855
Add-on Funding	56	51,754,079
Total LCFF Target Entitlement	n/a	\$1,121,924,605

Alternative Education Grant Average Daily Attendance (ADA)

ADA Type	ADA
Non-Juvenile Court School ADA	6,540.80
Juvenile Court School ADA	3,119.21
Total County Funded ADA	9,660.01

Unduplicated Pupil Percentage (UPP)

UPP Type	UPP
Average UPP (Non-Juvenile Court School)	77.92%
Lowest non-zero UPP (Non-Juvenile Court School)	48.73%

Additional State Aid

Additional State Aid Component	Number of COEs	Amount
Additional State Aid for Minimum State Aid Guarantee	24	\$178,249,579
State Aid Pursuant to <i>EC</i> Section 2575.1	24	9,043,575
State Aid Pursuant to <i>EC</i> Section 2575.2	58	105,433,334
State Aid Pursuant to <i>EC</i> Sections 2575.3	27	12,533,335
Total Additional State Aid	n/a	\$305,259,823