

# How to Start a Practice Test for the Listening, Reading, and Writing Domains

1 Navigate to <https://www.elpac.org/>.

2 Select the **Practice & Training Tests** button on the left side of the screen.

Practice & Training Tests

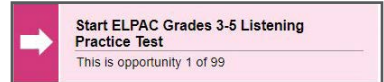
3 Select the **Student Interface Practice and Training Tests** option.

4 Select the **Sign In** button.

5 Select a grade from the **Grade** drop-down menu.

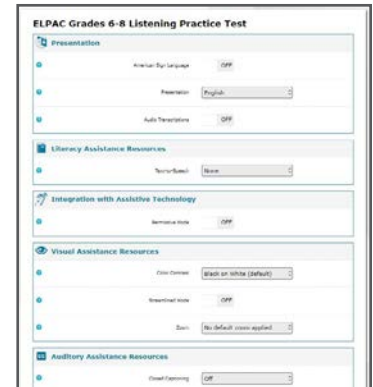
6 Select the **ELPAC Practice Test** for the Speaking domain, at the bottom of the page.

**i** Assessments are identified by name of test, grade, and domain. In addition, they are color coded pink.



7 Select any test settings, as needed.

**i** The practice tests are ideal for teaching students how to use available resources.



8 Select the **Select** button.

**i** You will see the **Sound and Video Playback** check.

9 Select the **Play** button.

10 Select either the **I could play the video and sound** or the **I could not play the video or sound** button, depending on which option applies.

11 Select the **Continue** button.

12 Select the **Begin Test Now** button.

13 Start answering test questions.

**i** For information about scoring, visit <https://www.elpac.org/resources/practicetests/>.