

# The California School Dashboard

---

## The California Department of Education

Analysis, Measurement, and Accountability Reporting Division

March 2018



**TOM TORLAKSON**  
State Superintendent of Public Instruction



# Agenda

- Goals
- Overview Video (optional)
- Dashboard Background and Key Features
- Fall 2017 Dashboard Reports with Examples

# Goals for Today's Presentation

1. Provide knowledge to parents to allow them to become an advocate on behalf of their child/children.
2. Empower parents to assist in the Local Control and Accountability Plan (LCAP) process.

# Overview Video

- <https://www.cde.ca.gov/ta/ac/cm/>

# Where did the California School Dashboard come from?

- Where?

- A new annual accountability system designed to align with the annual LCAP Process

- When?

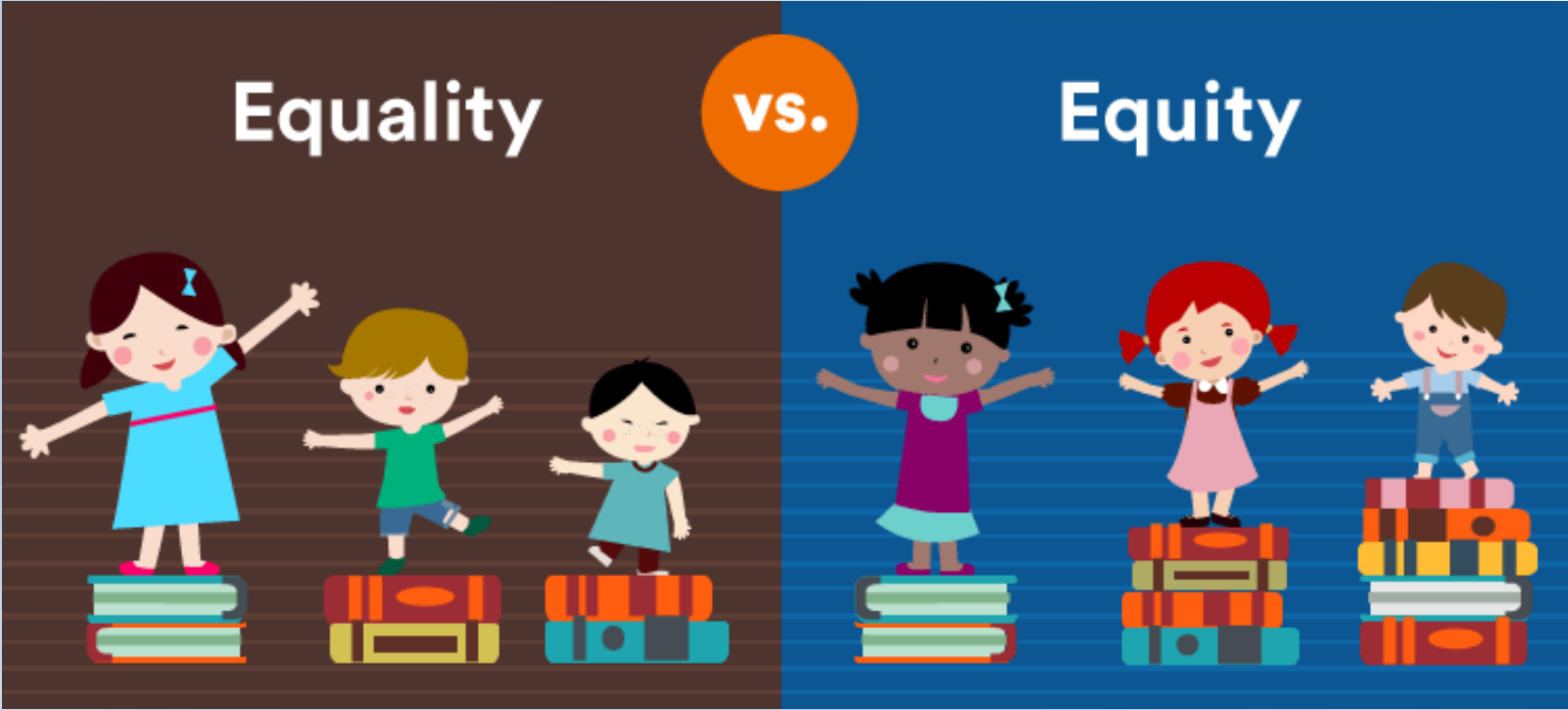
- Fall 2017 and after **more than a year of stakeholder engagement** and SBE actions

- It will be released annually each Fall

# Dashboard Key Messages

<b>More than a single number</b>	<b>Equity</b>	<b>Supports Local Decision-Making</b>
<p>A quality education is defined by <b>more</b> than a single test score</p>	<p><b>Increased</b> focus on addressing disparities among student groups</p>	<p><b>More</b> information to support the local planning process</p>

# Equity





# LCAP = Local Decision Making

- Districts are required to develop a three-year improvement plan known as the Local Control and Accountability Plan (LCAP), which must be updated annually with input from parents and community members. The plan must include:
  - A summary
  - Goals, actions, and services that will be provided to students
    - For example, increased services to English learners, students eligible for free or reduced lunch, and foster students

# How Can You Get Involved in the LCAP Planning Process?

- Participate in an LCAP meeting
  - Observe and give input
  - Knowledge of the Dashboard data will help inform your input
  - Join a parent leadership group, such as the Parent Advisory Committee and English Learner Committee

# **Fall 2017 Dashboard and Additional Reports**

# 2017 State Indicators

- **Academic Engagement**
  - Graduation Rate Indicator
- **Academic Performance**
  - College/Career Indicator (CCI)
  - English Learner Progress Indicator (ELPI)
  - English Language Arts (ELA)
  - Mathematics
- **School Conditions and Climate**
  - Suspension Rate Indicator

# Academic Engagement: Graduation Rate Indicator

- **What?**

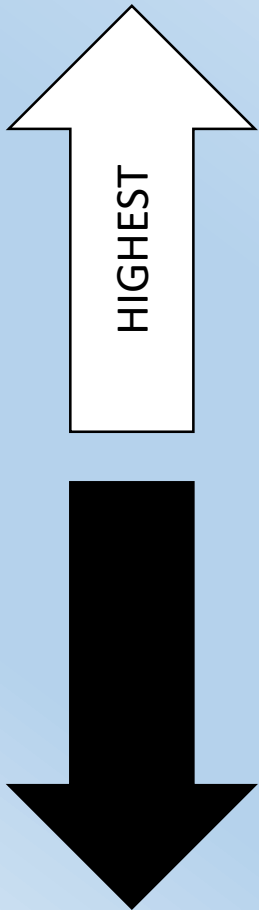
- Measures the number of students who earn a regular high school diploma

- **Why?**

- Graduation from high school:

- leads to more opportunities long-term
    - enables students to pursue a higher education

# Graduation Rate Indicator: Status



- Graduation Rates are **Very High** if they are 95% and above

- Graduation Rates are **Very Low** if they are below 67%

# Academic Performance: College/Career Indicator (CCI)

- **What?**

- Measures how well high schools and districts are preparing students for likely success after high school graduation

- **Why?**

- To see how well students are prepared for success in college and/or career

# Academic Performance: College/Career Indicator (CCI)

- **How?**

- There are many ways to measure a student's college/career readiness:

- **Completing Course Work:**

- Career Technical Education (CTE) Pathway(s)
      - a-g Courses (for UC and CSU colleges)
      - Dual Enrollment courses (earning college credit while attending the high school)



# Academic Performance: College/Career Indicator (CCI)

- **How?**

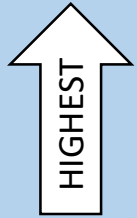
- There are many ways to measure a student's college/career readiness:

- Scoring well on tests:

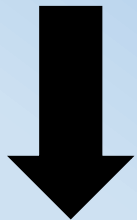
- Grade 11 Smarter Balanced Summative Assessments in English Language Arts (ELA) and Mathematics
      - Advanced Placement (AP) Exams
      - International Baccalaureate (IB) Exams

# CCI: Status

What students do over their high school career places them in one of 3 levels or categories:



- Prepared
- Approaching/Nearly Prepared



- Not Prepared

# CCI Category Chart

- **How?**

- School reports for each of these levels can be found at the College/Career Indicator Reports & Data Webpage

Status Categories	Percentage
Prepared	35.8%
Approaching/Nearly Prepared	25.4%
Not Prepared	38.8%

- <https://www6.cde.ca.gov/californiamodel/?indicator=cci>

# Academic Performance: English Learner Progress Indicator (ELPI)

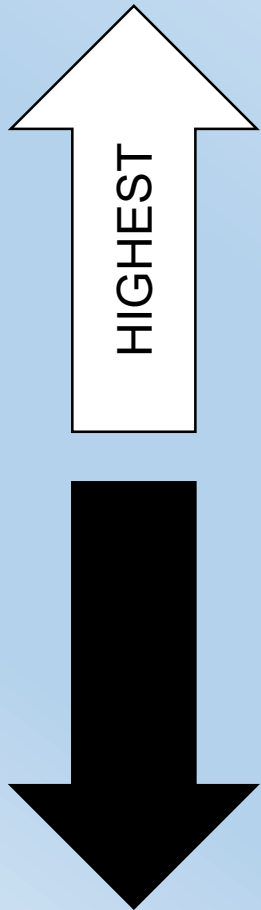
- **What?**

- Measures how many students are making progress in learning English
  - On annual English Language Proficiency tests
  - Being reclassified

- **Why?**

- The goal is to have all English Learners reach proficiency in the English language

# English Learner Progress Indicator (ELPI): Status



- English Learner Progress is **Very High** if 85% or more of ELs are progressing
- English Learner Progress is **Very Low** if less than 60% of ELs are progressing

# Academic Performance: English Language Arts (ELA)/Math

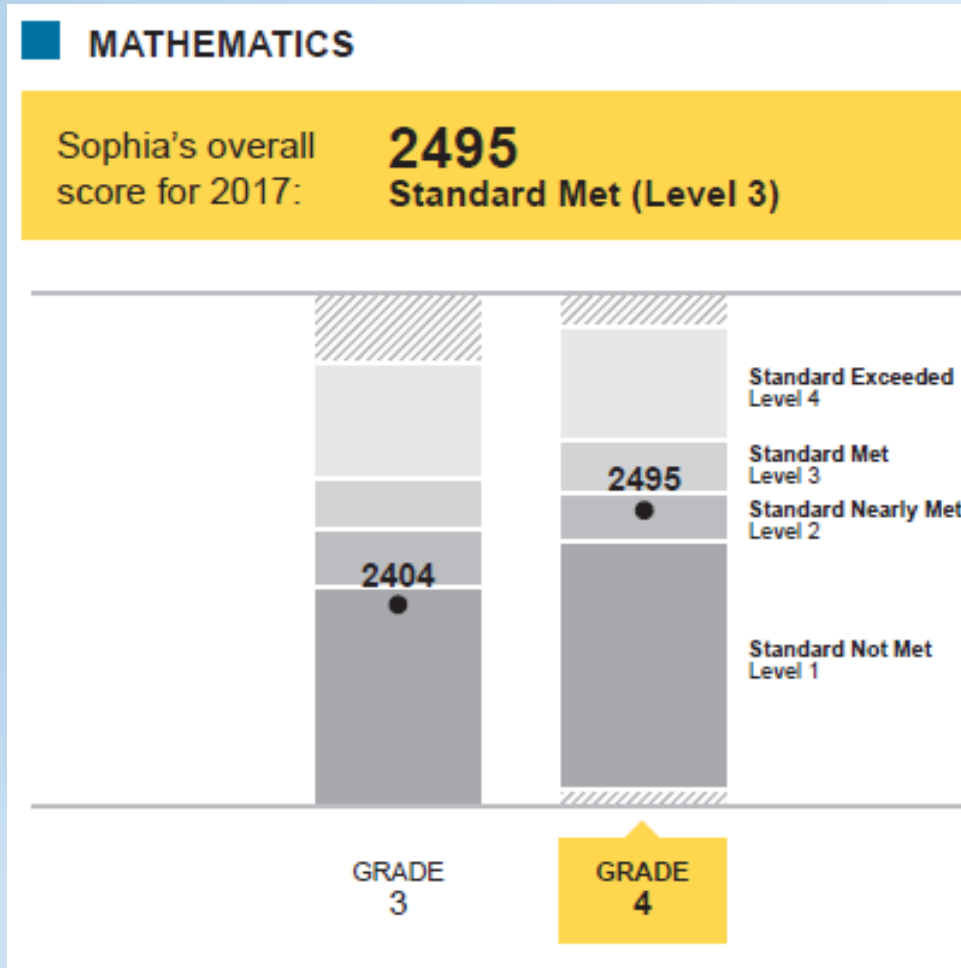
- **What?**

- Measures how far students are from achieving proficiency on the academic tests in grades 3-8

- **Why?**

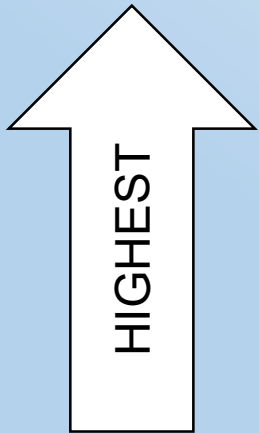
- Lets you see, on average, the performance of students and how far above/below they are from proficiency.

# Student Score Reports vs. Dashboard

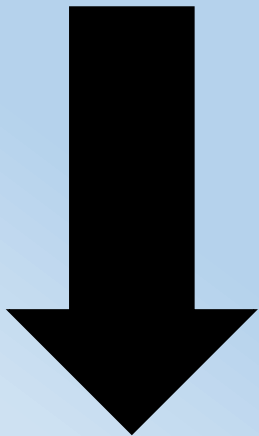


- **Your child:**
  - Parents also get individual reports for their child that show how far above or below the your child is from reaching Level 3
- **All students:**
  - The ELA and Math indicators measure the average “distance from level 3” for the whole school or district

# Academic Performance: English Language Arts (ELA) Status



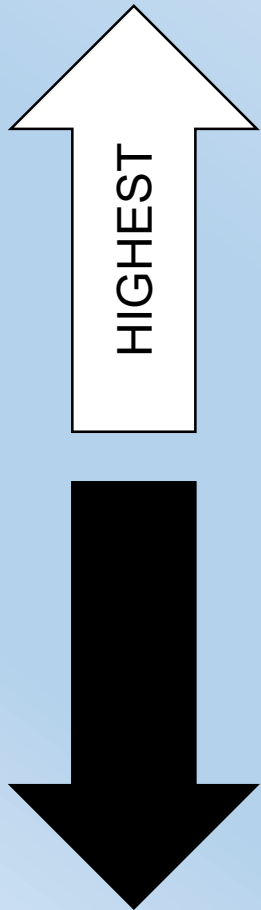
- English Language Arts scores are **Very High** if the average score is 45 points and above



- English Language Arts scores are **Very Low** if the average score is below -70 points



# Academic Performance: Math Status



- Math scores are Very High if the average score is 35 points and above
- Math scores are Very Low if the average score is below -95 points

# School Conditions & Climate: Suspension Rate Indicator

- **What?**

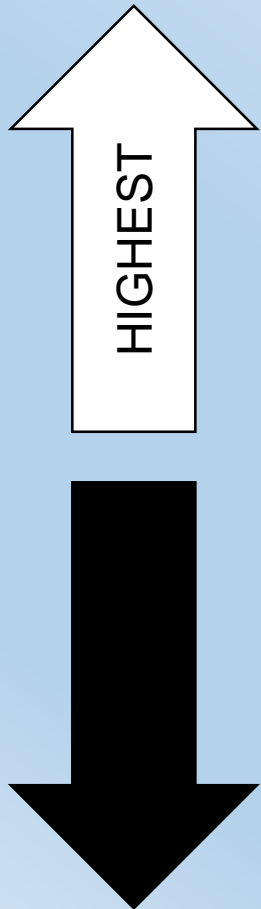
- Measures the number of students who received a suspension during the school year

- **Why?**

- Discipline policies are an important part of school culture

- To see that all student groups are receiving equitable treatment

# Suspension Indicator: Status



Suspension Rate	Elementary Schools	Middle School	High School
Suspension Rates are <b><u>Very Low</u></b> if they are:	0.5% or less	0.5% or less	0.5% or less
Suspension Rates are <b><u>Very High</u></b> if they are:	above 6%	above 12%	above 10%

# Coming Soon: Chronic Absenteeism

- **What?**

- Measures how many students have been excessively absent (missing more than 10% of the school year)
- New Indicator coming in Fall 2018

- **Why?**

- Attendance is important to student success
  - It is difficult to learn if students are not in class

# Questions and/or Discussion

