



I. 2016–17 AT A GLANCE

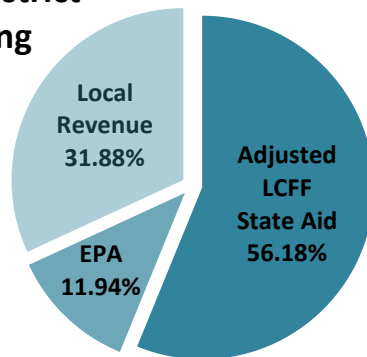


LCFF Funding Detail

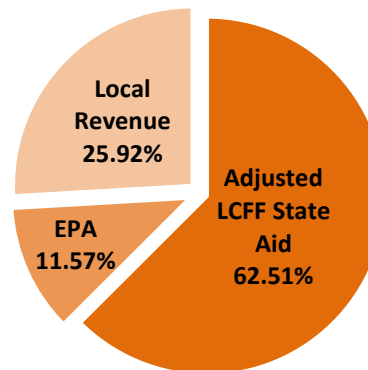
Sources	School Districts	Charter Schools	School District & Charter Subtotal	County Offices of Education (COE)	Statewide Total
LCFF State Aid before Minimum State Aid (MSA)	\$28,290,103,440	\$3,281,797,463	\$31,571,900,903	\$335,490,048	\$31,907,390,951
Additional State Aid for MSA Guarantee	<u>125,707,033</u>	<u>945,989</u>	<u>126,653,022</u>	<u>98,429,191</u>	225,082,213
Adjusted LCFF State Aid (subtotal)	28,415,810,473	3,282,743,452	31,698,553,925	433,919,239	32,132,473,164
Education Protection Account (EPA) State Aid	6,041,560,772	607,482,386	6,649,043,158	59,541,882	6,708,585,040
Local Revenue/In-Lieu of Property Taxes*	<u>16,122,456,696</u>	<u>1,361,291,256</u>	<u>17,483,747,952</u>	<u>540,336,945</u>	18,024,084,897
Total LCFF Funding Sources	\$50,579,827,941	\$5,251,517,094	\$55,831,345,035	\$1,033,798,066	\$56,865,143,101

*Amounts in table and pie charts do not include excess local revenue.

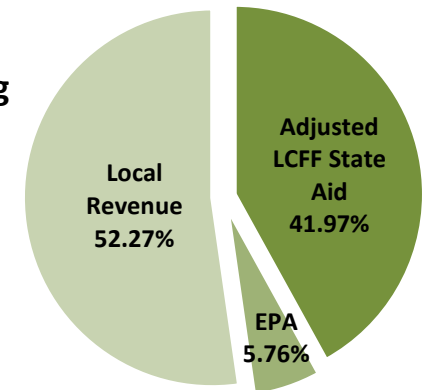
School District Funding



Charter School Funding



COE Funding



I. 2016–17 AT A GLANCE

Determination of Statewide Remaining Need for LCFF Full Transition

Remaining Need Calculation*	School Districts	Charter Schools	Total
2016–17 LCFF Target Entitlement	\$ 52,538,734,775	\$ 5,465,980,312	\$ 58,004,715,087
Less LCFF Floor, OR LCFF Target Amount for LEAs Funded at the LCFF Target**	(47,623,902,807)	(4,973,213,697)	(52,597,116,504)
Less Current Year Gap Funding (Based on Statewide Gap Rate of 56.08%)	(2,756,080,481)	(276,327,738)	(3,032,408,219)
Statewide Remaining Need	\$ 2,158,751,487	\$ 216,438,877	\$ 2,375,190,364

*Remaining Need Calculation is not applicable to COEs; as of 2014-15, all COEs are either funded at the Target or above, based on “hold harmless” provisions of *Education Code* Section 2575(g)(2).

**Final determination of LEAs funded at the LCFF Target is made at the Second Principal Apportionment.

II. COUNTY OFFICE OF EDUCATION DATA

LCFF Funding Summary

LCFF Entitlement	Number of COEs	Amount
Funding Based on LCFF Target*	24	\$ 247,708,359
Funding Based on “Hold Harmless” provisions of <i>Education Code</i> Section 2575(g)(2)	34	\$ 687,504,244

Minimum State Aid (MSA)	
Number of COEs Receiving Additional State Aid for MSA Guarantee	21
Amount of Additional State Aid for MSA Guarantee	\$ 98,429,191

*Final determination of COEs funded at the LCFF Target is made at the Second Principal Apportionment.

LCFF Target Entitlement Calculation

LCFF Target Components	Number of COEs Represented	Amount
Base Grant Funding	54	\$ 177,764,354
Supplemental Grant Funding	54	55,601,318
Concentration Grant Funding	53	<u>24,657,823</u>
Alternative Education Grant (subtotal)		\$ 258,023,495
Operations Grant Funding	58	447,027,749
Add-on Funding	37	<u>30,820,427</u>
Total LCFF Target Entitlement		\$ 735,871,671

Alternative Education Grant Average Daily Attendance (ADA)	
Non-Juvenile Court School ADA	9,197.72
Juvenile Court School ADA	6,356.69
Total County Funded ADA	15,554.41
Unduplicated Pupil Percentage (UPP)	
Average UPP (Non-Juvenile Court School)	82.40%
Lowest non-zero UPP (Non-Juvenile Court School)	45.45%

DATA SOURCE: 2016–17 Annual Principal Apportionment certified funding exhibits for all active LEAs for the fiscal year (<http://www.cde.ca.gov/fg/aa/pa/pa1617.asp>)

III. SCHOOL DISTRICT AND CHARTER SCHOOL DATA

LCFF Transition Entitlement Summary

LCFF Transition Components	Number of Districts	% of Districts	Amount of District Funding	Number of Charters	% of Charters	Amount of Charter Funding	Number of LEAs	Total Amount of Funding
LCFF Floor Entitlement	893	94%	\$ 47,563,034,598	1,169	95%	\$ 4,799,314,086	2,062	\$ 52,362,348,684
Current Year Gap Funding	893	94%	2,756,080,481	1,169	95%	276,327,738	2,062	3,032,408,219
LCFF Target Entitlement*	52	6%	60,868,209	63	5%	173,899,611	115	234,767,820
Economic Recovery Target Payments	122	13%	29,598,086	23	2%	1,010,811	145	30,608,897
State Aid for MSA Guarantee	149	16%	125,707,033	16	1%	945,989	165	126,653,022
Miscellaneous Adjustments	6	1%	(428,112)	0	0%	-	6	(428,112)
Total LCFF Transition Entitlement**	N/A	N/A	\$ 50,534,860,295	N/A	N/A	\$ 5,251,498,235	N/A	\$ 55,786,358,530

*Final determination of LEAs funded at the LCFF Target is made at the Second Principal Apportionment.

**Total LCFF Transition Entitlement is less than Total LCFF Funding Sources (shown on page 1) due to EPA State Aid minimum guarantee.

LCFF Target Entitlement Calculation

LCFF Target Components	Number of Districts	% of Districts	Amount of District Funding	Number of Charters	% of Charters	Amount of Charter Funding	Number of LEAs	Total Amount of Funding
Base Grant Funding*	908	96%	\$ 42,772,316,146	1,230	99.84%	\$ 4,631,286,264	2,138	\$ 47,403,602,410
Supplemental Grant Funding	945	100%	5,319,655,088	1,230	99.84%	559,647,321	2,175	5,879,302,409
Concentration Grant Funding	546	58%	3,031,096,883	697	56.57%	275,046,727	1,243	3,306,143,610
Necessary Small School (NSS) Allowance	110	12%	95,261,387	N/A	N/A	N/A	110	95,261,387
Add-on Funding	916	97%	1,320,405,271	N/A	N/A	N/A	916	1,320,405,271
Total LCFF Target Entitlement	N/A	N/A	\$ 52,538,734,775	N/A	N/A	\$ 5,465,980,312	N/A	\$ 58,004,715,087

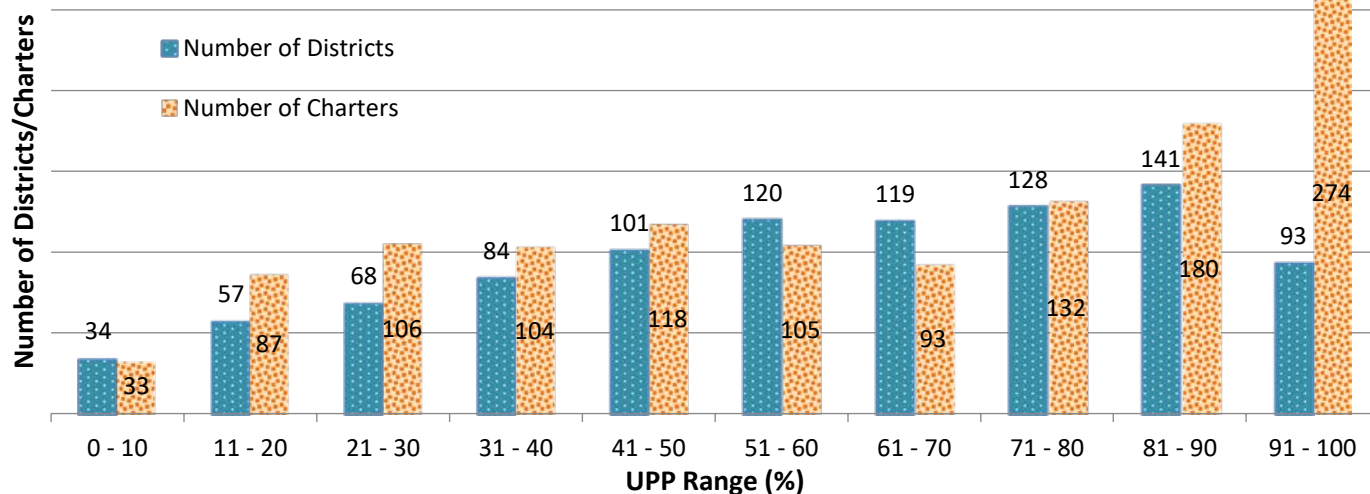
*Some school districts are fully funded through NSS and do not receive Base Grant Funding; some charter schools have no Base Grant Funding due to zero funded ADA.

Total Funded ADA by Grade Span (includes NSS ADA)

LEA Type	Number of LEAs	TK/K-3	4-6	7-8	9-12	TOTAL ADA
School Districts	945	1,677,115.24	1,270,527.82	819,926.28	1,649,971.04	5,417,540.38
Charter Schools	1,232	160,827.38	123,070.75	94,181.55	203,571.70	581,651.38
TOTAL	2,177	1,837,942.62	1,393,598.57	914,107.83	1,853,542.74	5,999,191.76

III. SCHOOL DISTRICT AND CHARTER SCHOOL DATA

Unduplicated Pupil Percentage (UPP) Ranges for School Districts and Charter Schools



UPP Range	Number of Districts	Number of Charters
0% - 10%	34	33
11% - 20%	57	87
21% - 30%	68	106
31% - 40%	84	104
41% - 50%	101	118
51% - 60%	120	105
61% - 70%	119	93
71% - 80%	128	132
81% - 90%	141	180
91% - 100%	93	274
Total	945	1232

Ten Largest School Districts (based on ADA)

School District Name	ADA	Target per ADA*	UPP
Los Angeles Unified	459,537.04	\$11,524	84.06%
San Diego Unified	101,079.89	\$9,936	63.11%
Long Beach Unified	74,246.58	\$9,734	68.40%
Fresno Unified	66,840.67	\$10,680	88.22%
Elk Grove Unified	59,998.44	\$9,003	58.07%
Corona-Norco Unified	51,438.16	\$8,741	47.18%
San Francisco Unified	50,786.00	\$10,047	63.69%
Santa Ana Unified	50,099.02	\$10,954	94.03%
Capistrano Unified	47,652.39	\$8,402	23.28%
San Bernardino City Unified	47,358.47	\$11,119	90.51%

Ten Largest Charter Schools (based on ADA)

Charter School Name	ADA	Target per ADA*	UPP
River Springs Charter	5,860.04	\$8,481	48.66%
Visions In Education	5,056.36	\$8,881	50.01%
Granada Hills Charter High	4,537.64	\$9,701	51.11%
Opportunities for Learning - Baldwin Park II	3,509.73	\$11,601	86.17%
El Camino Real Charter High	3,386.70	\$9,203	22.83%
Capistrano Connections Academy	3,212.92	\$8,796	39.53%
Inspire Charter School - South	3,147.69	\$8,216	30.43%
Grover Cleveland Charter High	3,063.57	\$10,444	65.96%
Birmingham Community Charter High	2,969.62	\$11,581	85.31%
Options for Youth-Victorville Charter	2,961.46	\$11,207	81.43%

*LCFF Target per ADA is derived by dividing LCFF Target Entitlement by Funded ADA. This amount does not represent actual funding. Target per ADA rates vary due to differences in UPP, the distribution of ADA between the grade spans, and other components of the Target Entitlement.