



I. 2016–17 AT A GLANCE

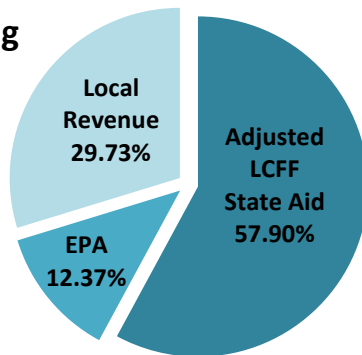


LCFF Funding Detail

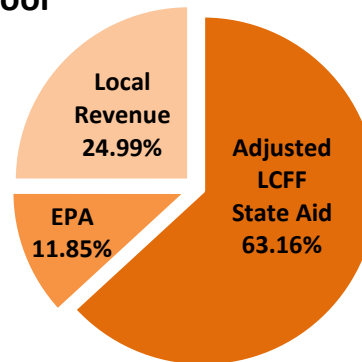
Sources	School Districts	Charter Schools	School District & Charter Subtotal	County Offices of Education (COEs)	Statewide Total
LCFF State Aid before Minimum State Aid (MSA)	\$ 29,192,233,747	\$ 3,299,659,963	\$ 32,491,893,710	\$ 374,867,017	\$ 32,866,760,727
Additional State Aid for MSA Guarantee	114,796,039	654,924	115,450,963	69,662,716	\$185,113,679
Adjusted LCFF State Aid (subtotal)	29,307,029,786	3,300,314,887	32,607,344,673	444,529,733	33,051,874,406
Education Protection Account (EPA) State Aid	6,258,966,791	619,021,566	6,877,988,357	64,754,793	6,942,743,150
Local Revenue/In-Lieu of Property Taxes*	15,050,859,745	1,305,991,625	16,356,851,370	517,203,517	16,874,054,887
Total LCFF Funding Sources	\$ 50,616,856,322	\$ 5,225,328,078	\$ 55,842,184,400	\$ 1,026,488,043	\$ 56,868,672,443

*Amount does not include excess local revenue.

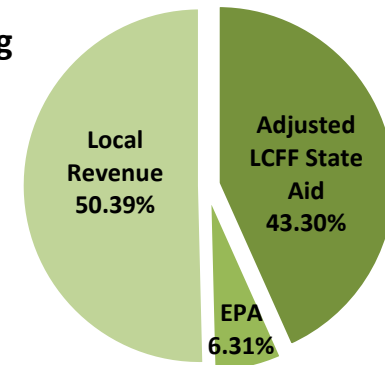
School District Funding



Charter School Funding



COE Funding



I. 2016–17 AT A GLANCE

Remaining Need Calculation*	School Districts	Charter Schools	Total
2016–17 LCFF Target Entitlement	\$ 52,665,445,319	\$ 5,445,326,993	\$ 58,110,772,312
Less LCFF Floor, OR LCFF Target Amount for LEAs Funded at the LCFF Target**	(47,751,473,576)	(4,958,408,015)	(52,709,881,591)
Less Current Year Gap Funding (Based on Statewide Gap Rate of 54.47%)	(2,676,744,889)	(265,235,121)	(2,941,980,010)
Statewide Remaining Need	\$ 2,237,226,854	\$ 221,683,857	\$ 2,458,910,711

*Remaining Need Calculation is not applicable to COEs; as of 2014-15, all COEs are either funded at the Target or above based on “hold harmless” provisions of *Education Code* Section 2575(g)(2).

**Final determination of LEAs funded at the LCFF Target is made at the Second Principal Apportionment.

II. COUNTY OFFICE OF EDUCATION DATA

LCFF Funding Summary

LCFF Entitlement	Number of COEs	Amount
Funding Based on LCFF Target*	24	\$ 263,108,275
Funding Based on “Hold Harmless” provisions of <i>Education Code</i> Section 2575(g)(2)	34	\$ 693,565,000

Minimum State Aid (MSA)	
Number of COEs Receiving Additional State Aid for MSA Guarantee	20
Amount of Additional State Aid for MSA Guarantee	\$ 69,662,716

*Final determination of COEs funded at the LCFF Target is made at the Second Principal Apportionment.

LCFF Target Entitlement Calculation

LCFF Target Components	Number of COEs Represented	Amount
Base Grant Funding	53	\$ 196,336,087
Supplemental Grant Funding	53	61,481,590
Concentration Grant Funding	52	27,283,834
Alternative Education Grant (subtotal)		\$ 285,101,511
Operations Grant Funding	58	449,477,397
Add-on Funding	37	30,842,538
Total LCFF Target Entitlement		\$ 765,421,446

Alternative Education Grant Average Daily Attendance (ADA)	
Non-Juvenile Court School ADA	9,934.50
Juvenile Court School ADA	7,244.94
Total County Funded ADA	17,179.44
Unduplicated Pupil Percentage (UPP)	
Average UPP (Non-Juvenile Court School)	80.94%
Lowest non-zero UPP (Non-Juvenile Court School)	40.00%

III. SCHOOL DISTRICT AND CHARTER SCHOOL DATA

LCFF Transition Entitlement Summary

LCFF Transition Components	School Districts Receiving Funding			Charter Schools Receiving Funding			Total	
	Number	% of Districts	Amount	Number	% of Charters	Amount	Number of LEAs	Amount
LCFF Floor Entitlement	891	94%	\$ 47,688,982,830	1,162	94%	\$ 4,787,793,373	2,062	\$ 52,476,776,203
Current Year Gap Funding	891	94%	2,676,744,889	1,162	94%	265,235,121	2,062	2,941,980,010
LCFF Target Entitlement*	54	6%	62,490,746	61	5%	170,614,642	115	233,105,388
Economic Recovery Target Payments	122	13%	29,598,086	23	2%	1,010,811	145	30,608,897
State Aid for MSA Guarantee	144	15%	114,796,039	12	1%	654,924	156	115,450,963
Miscellaneous Adjustments	0	0%	-	<i>not applicable to charter schools</i>			0	-
Total LCFF Transition Entitlement**			\$ 50,572,612,590			\$ 5,225,308,871		\$ 55,797,921,461

*Final determination of LEAs funded at the LCFF Target is made at the Second Principal Apportionment.

**Total LCFF Transition Entitlement is less than Total LCFF Funding Sources (shown on page 1) due to EPA State Aid minimum guarantee.

LCFF Target Entitlement Calculation

LCFF Target Components	School Districts Represented			Charter Schools Represented			Total	
	Number	% of Districts	Amount	Number	% of Charters	Amount	Number of LEAs	Amount
Base Grant Funding*	906	96%	\$ 42,893,219,463	1,223	99.3%	\$ 4,618,575,868	2129	\$ 47,511,795,331
Supplemental Grant Funding	945	100%	5,324,069,970	1,222	99.2%	556,008,759	2167	5,880,078,729
Concentration Grant Funding	545	58%	3,023,218,039	693	56.3%	270,742,366	1238	3,293,960,405
Necessary Small School (NSS) Allowance	117	12%	104,532,576	<i>not applicable to charter schools</i>			117	104,532,576
Add-on Funding	916	97%	1,320,405,271	<i>not applicable to charter schools</i>			916	1,320,405,271
Total LCFF Target Entitlement			\$ 52,665,445,319			\$ 5,445,326,993		\$ 58,110,772,312

*Some school districts are fully funded through NSS and do not receive Base Grant Funding; some charter schools have no Base Grant Funding due to zero funded ADA.

Total Funded ADA by Grade Span (includes NSS ADA)

LEA Type	Number of LEAs	TK/K-3	4-6	7-8	9-12	TOTAL ADA
School Districts	945	1,680,065.39	1,274,371.53	821,116.51	1,657,940.29	5,433,493.72
Charter Schools	1,232	160,640.70	123,551.29	93,743.90	202,268.98	580,204.87
TOTAL	2,177	1,840,706.09	1,397,922.82	914,860.41	1,860,209.27	6,013,698.59

DATA SOURCE: 2016–17 First Principal Apportionment certified funding exhibits for all active LEAs for the fiscal year (<http://www.cde.ca.gov/fg/aa/pa/pa1617.asp>)

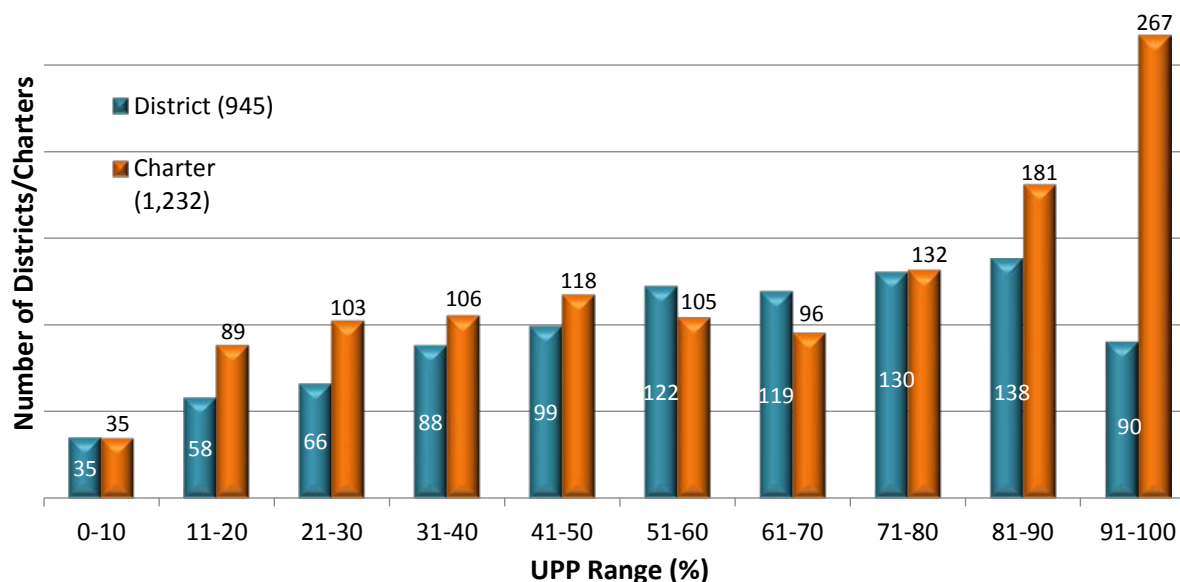
III. SCHOOL DISTRICT AND CHARTER SCHOOL DATA

Unduplicated Pupil Percentage (UPP)*

School Districts' Average UPP	58.55%
Districts with UPP of 100%	1
Districts with UPP of zero	0
Charter Schools' Average UPP	62.29%
Charters with UPP of 100%	5
Charters with UPP of zero	1

*UPP is based on data from current and two prior years and is used in determining the LEA's Supplemental and Concentration Grant funding in the LCFF Target entitlement.

UPP Ranges for School Districts and Charter Schools



Ten Largest School Districts (based on ADA)

School District Name	ADA	Target per ADA**	UPP
Los Angeles Unified	458,193.81	\$11,518	83.97%
San Diego Unified	102,271.65	\$9,911	62.89%
Long Beach Unified	74,157.09	\$9,802	69.62%
Fresno Unified	67,483.83	\$10,683	88.22%
Elk Grove Unified	60,156.23	\$9,010	58.16%
Corona-Norco Unified	51,456.69	\$8,740	47.11%
San Francisco Unified	50,892.64	\$10,026	63.31%
Santa Ana Unified	49,827.85	\$10,942	94.03%
Capistrano Unified	47,931.79	\$8,407	23.26%
San Bernardino City Unified	47,373.84	\$11,112	90.38%

Ten Largest Charter Schools (based on ADA)

Charter School Name	ADA	Target per ADA**	UPP
River Springs Charter	5839.98	\$8,479	48.64%
Visions In Education	5020.50	\$8,881	49.97%
Granada Hills Charter High	4581.54	\$9,701	51.13%
El Camino Real Charter High	3442.09	\$9,203	22.85%
Capistrano Connections Academy	3143.98	\$8,800	39.65%
Opportunities for Learning - Baldwin Park II	3118.27	\$11,610	86.17%
Grover Cleveland Charter High	3109.87	\$10,447	66.01%
Inspire Charter School - South	3012.38	\$8,221	30.27%
Birmingham Community Charter High	3007.19	\$11,577	85.30%
Palisades Charter High	2873.46	\$9,336	30.38%

**LCFF Target per ADA is derived by dividing LCFF Target Entitlement by Funded ADA. This amount does not represent actual funding. Target per ADA rates vary due to differences in UPP, the distribution of ADA between the grade spans, and other components of the Target Entitlement.