

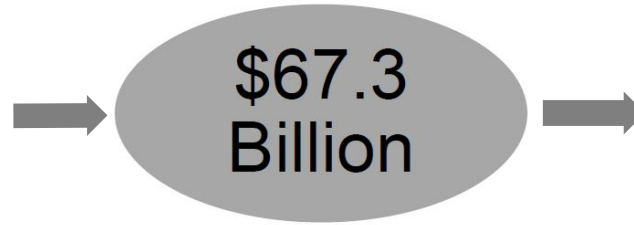
Local Control Funding Formula (LCFF) Statewide Fingertip Facts 2021–22 Fiscal Year – First Principal Apportionment (as of February 2022)

Prepared by: CA Dept. of Education
School Fiscal Services Division

2021–22 AT A GLANCE

Funding Sources:

- \$35.2 Billion from State General Fund
- \$21.8 Billion from Local Revenue
- \$10.3 Billion from Education Protection Account (EPA)



Funding Apportioned:

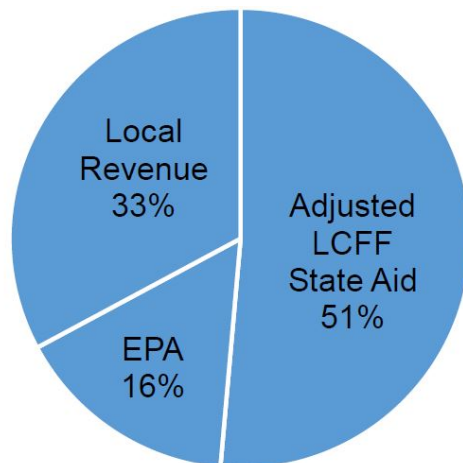
- \$59.3 Billion to School Districts
- \$6.9 Billion to Charter Schools
- \$1.1 Billion to County Offices of Education (COE)

LCFF Funding Detail

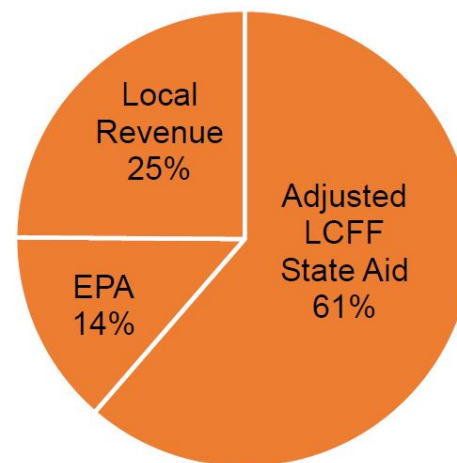
Sources	School Districts	Charter Schools	School District & Charter Subtotal	County Offices of Education	Statewide Total
LCFF State Aid before Minimum State Aid (MSA)	\$ 30,285,437,329	\$ 4,216,533,759	\$ 34,501,971,088	\$ 238,750,223	\$ 34,740,721,311
Additional State Aid for MSA Guarantee, Other LCFF State Aid for COEs	190,970,182	1,071,414	192,041,596	230,596,275	422,637,871
Adjusted LCFF State Aid (subtotal)	30,476,407,511	4,217,605,173	34,694,012,684	469,346,498	35,163,359,182
EPA State Aid	9,343,520,552	946,048,305	10,289,568,857	35,504,482	10,325,073,339
Local Revenue/In-lieu of Property Taxes ¹	19,466,614,423	1,710,786,241	21,177,400,664	581,255,101	21,758,655,765
Total LCFF Funding Sources	\$ 59,286,542,486	\$ 6,874,439,719	\$ 66,160,982,205	\$ 1,086,106,081	\$ 67,247,088,286

¹Amounts in table and pie charts do not include excess local revenue.

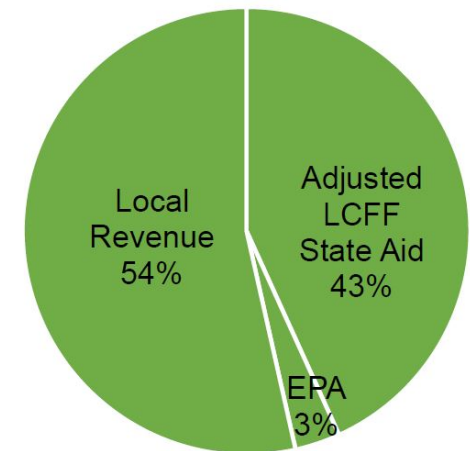
School District Funding



Charter School Funding



COE Funding



SCHOOL DISTRICT AND CHARTER SCHOOL DATA

Summary

LCFF Entitlement Component	District Count	% of Districts	District Funding	Charter Count	% of Charters	Charter Funding	Total Count	Total Funding
Base Grant Funding ²	904	96.2%	\$47,266,829,764	1,273	100.0%	\$5,758,639,312	2,177	\$53,025,469,076
Supplemental Grant Funding	940	100.0%	5,911,334,747	1,273	100.0%	696,260,135	2,213	6,607,594,882
Concentration Grant Funding	558	59.4%	4,374,226,025	743	58.4%	416,415,737	1,301	4,790,641,762
Necessary Small School (NSS) Allowance	102	10.9%	103,140,720	n/a	n/a	n/a	102	103,140,720
Add-on Funding	923	98.2%	1,379,553,872	21	1.6%	1,991,385	944	1,381,545,257
Miscellaneous Adjustments ³	0	0.0%	0	0	0.0%	0	0	0
State Aid for MSA Guarantee	166	17.7%	190,970,182	18	1.4%	1,071,414	184	192,041,596
Total LCFF Entitlement⁴	n/a	n/a	\$59,226,055,310	n/a	n/a	\$6,874,377,983	n/a	\$66,098,441,908

²Some school districts are fully funded through NSS and do not receive Base Grant Funding; some charter schools have no Base Grant Funding due to zero funded ADA.

³ Adjustments for special legislation, instructional time penalties, and class size penalties.

⁴Total LCFF Entitlement is less than Total LCFF Funding Sources (shown on page 1) due to EPA State Aid minimum guarantee.

Ten Largest School Districts (based on Funded ADA)

School District Name	ADA	UPP
Los Angeles Unified	413,169.58	85.62%
San Diego Unified	97,865.56	57.12%
Long Beach Unified	68,135.29	65.81%
Fresno Unified	66,838.66	88.52%
Elk Grove Unified	60,814.36	52.96%
Corona-Norco Unified	50,636.88	53.56%
San Francisco Unified	50,212.92	58.17%
San Bernardino City Unified	45,830.14	90.26%
Capistrano Unified	44,790.19	27.47%
Santa Ana Unified	43,771.90	86.04%

Ten Largest Charter Schools (based on Funded ADA)

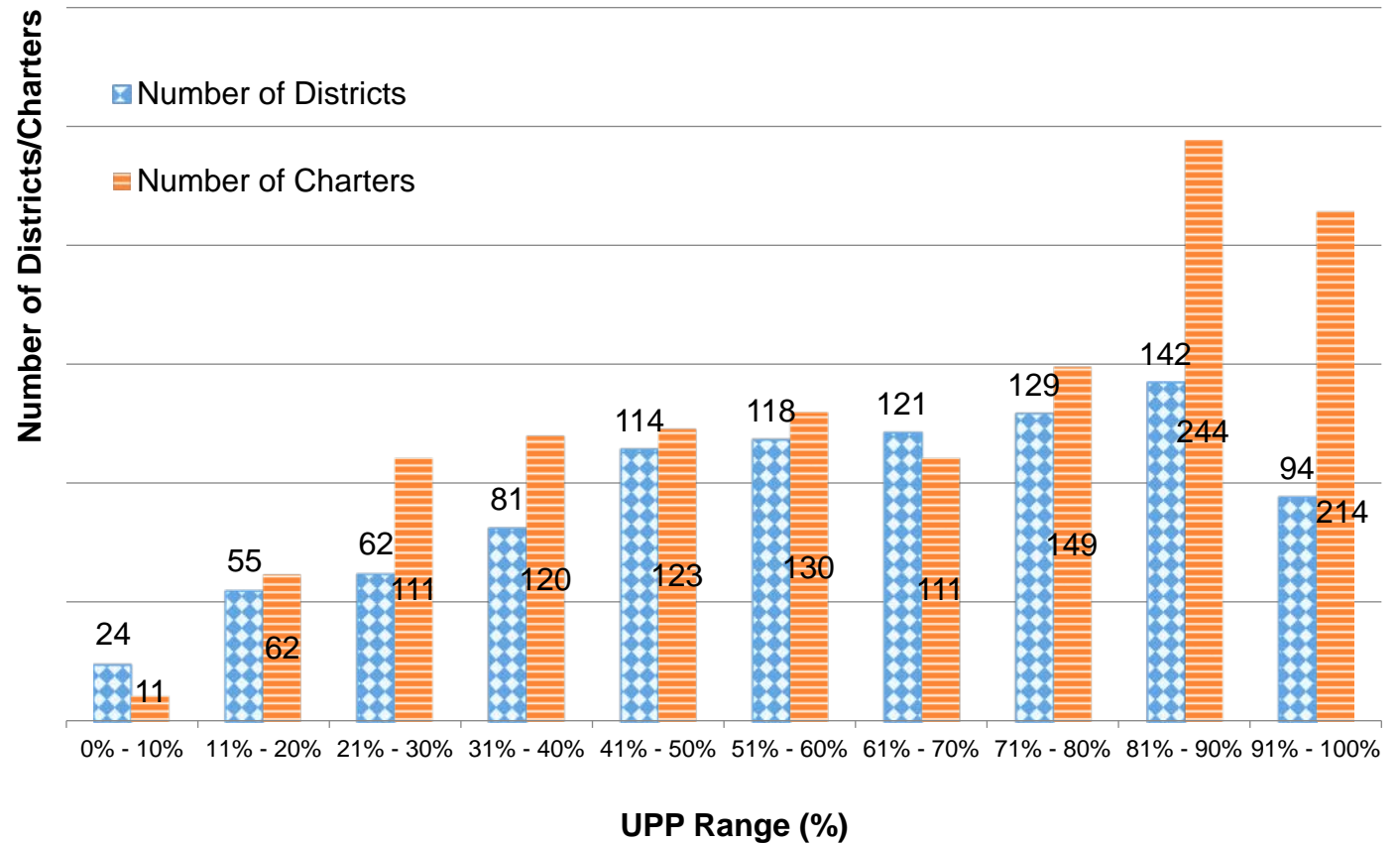
Charter School Name	ADA	UPP
Blue Ridge Academy	6,486.31	39.90%
Visions In Education	6,363.47	51.16%
River Springs Charter	6,275.94	56.63%
California Virtual Academy @ Los Angeles	5,828.34	70.98%
Granada Hills Charter	5,389.59	50.77%
California Connections Academy Southern California	4,709.12	46.30%
Heartland Charter	4,484.55	40.25%
Pacific Coast Academy	4,378.15	38.82%
Mission Vista Academy	4,158.27	41.51%
Cabrillo Point Academy	4,055.26	33.76%

Total Funded ADA by Grade Span (includes NSS ADA)

LEA Type	Number of LEAs	Grades TK/K-3	Grades 4-6	Grades 7-8	Grades 9-12	TOTAL ADA
School Districts	940	1,599,531.49	1,187,993.65	809,795.37	1,634,606.29	5,231,926.80
Charter Schools	1,275	174,222.01	133,498.64	105,055.55	220,415.08	633,191.28
TOTAL	2,215	1,773,753.50	1,321,492.29	914,850.92	1,855,021.37	5,865,118.08

Unduplicated Pupil Percentage (UPP) Ranges for School Districts and Charter Schools

UPP Range	District Count	Charter Count
0% - 10%	24	11
11% - 20%	55	62
21% - 30%	62	111
31% - 40%	81	120
41% - 50%	114	123
51% - 60%	118	130
61% - 70%	121	111
71% - 80%	129	149
81% - 90%	142	244
91% - 100%	94	214
Total	940	1,275



COUNTY OFFICE OF EDUCATION DATA

LCFF Funding Summary

LCFF Entitlement	Number of COEs	Amount
Funding Based on LCFF Target ⁵	25	\$235,075,981
Funding Based on “Hold Harmless” provisions of <i>EC</i> Section 2575(g)(2)	33	\$619,925,433

⁵Final determination of LEAs funded at the LCFF Target is made at the Second Principal (P-2) Apportionment.

LCFF Target Entitlement Calculation

LCFF Target Components	Number of COEs	Amount
Base Grant Funding	51	\$95,779,008
Supplemental Grant Funding	49	29,226,920
Concentration Grant Funding	49	12,579,736
Alternative Education Grant (subtotal)	n/a	\$137,585,664
Operations Grant Funding	58	478,690,960
Add-on Funding	36	30,684,488
Total LCFF Target Entitlement	n/a	\$646,961,112

Alternative Education Grant Average Daily Attendance (ADA)

Non-Juvenile Court School ADA	4,549.72
Juvenile Court School ADA	2,797.04
Total County Funded ADA	7,346.76

Unduplicated Pupil Percentage (UPP)

Average UPP (Non-Juvenile Court School)	76.28%
Lowest non-zero UPP (Non-Juvenile Court School)	44.16%

Additional State Aid

Additional State Aid Component	Number of COEs	Amount
Additional State Aid for Minimum State Aid Guarantee	27	\$154,262,078
State Aid Pursuant to <i>EC</i> Section 2575.1	24	7,800,863
State Aid Pursuant to <i>EC</i> Section 2575.2	51	68,533,334
Total Additional State Aid	n/a	\$230,596,275