



**I. 2016–17 AT A GLANCE**

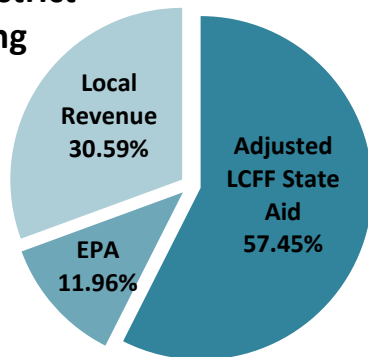


**LCFF Funding Detail**

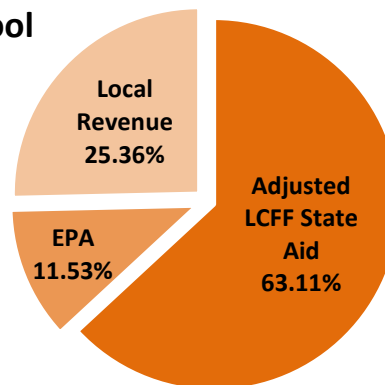
Sources	School Districts	Charter Schools	School District & Charter Subtotal	County Offices of Education (COEs)	Statewide Total
LCFF State Aid before Minimum State Aid (MSA)	\$ 28,928,625,714	\$ 3,293,704,981	\$ 32,222,330,695	\$ 340,554,109	\$ 32,562,884,804
Additional State Aid for MSA Guarantee	116,252,385	721,771	116,974,156	95,053,080	212,027,236
Adjusted LCFF State Aid (subtotal)	29,044,878,099	3,294,426,752	32,339,304,851	435,607,189	32,774,912,040
Education Protection Account (EPA) State Aid	6,045,739,794	601,840,293	6,647,580,087	60,772,204	6,708,352,291
Local Revenue/In-Lieu of Property Taxes*	15,466,149,047	1,323,857,789	16,790,006,836	526,305,047	17,316,311,883
<b>Total LCFF Funding Sources</b>	<b>\$ 50,556,766,940</b>	<b>\$ 5,220,124,834</b>	<b>\$ 55,776,891,774</b>	<b>\$ 1,022,684,440</b>	<b>\$ 56,799,576,214</b>

\*Amounts in table and pie charts do not include excess local revenue.

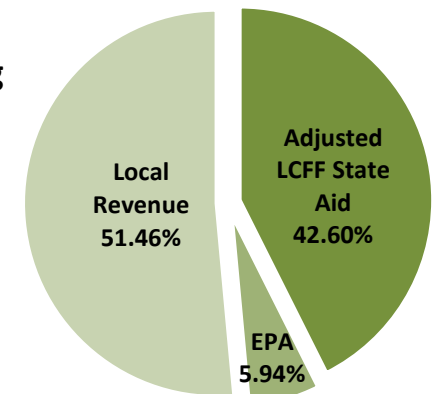
**School District Funding**



**Charter School Funding**



**COE Funding**



## I. 2016–17 AT A GLANCE

### Determination of Statewide Remaining Need for LCFF Full Transition

Remaining Need Calculation*	School Districts	Charter Schools	Total
2016–17 LCFF Target Entitlement	\$ 52,527,988,959	\$ 5,433,333,005	\$ 57,961,321,964
Less LCFF Floor, OR LCFF Target Amount for LEAs Funded at the LCFF Target**	(47,611,802,815)	(4,943,934,211)	(52,555,737,026)
Less Current Year Gap Funding (Based on Statewide Gap Rate of 56.08%)	(2,756,839,857)	(274,439,182)	(3,031,279,039)
<b>Statewide Remaining Need</b>	<b>\$ 2,159,346,287</b>	<b>\$ 214,959,612</b>	<b>\$ 2,374,305,899</b>

\*Remaining Need Calculation is not applicable to COEs; as of 2014-15, all COEs are either funded at the Target or above based on “hold harmless” provisions of *Education Code* Section 2575(g)(2).

\*\*Final determination of LEAs funded at the LCFF Target is made at the Second Principal Apportionment.

## II. COUNTY OFFICE OF EDUCATION DATA

### LCFF Funding Summary

LCFF Entitlement	Number of COEs	Amount
Funding Based on LCFF Target*	24	\$ 243,476,280
Funding Based on “Hold Harmless” provisions of <i>Education Code</i> Section 2575(g)(2)	34	\$ 683,964,590

\*Final determination of COEs funded at the LCFF Target is made at the Second Principal Apportionment.

Minimum State Aid (MSA)	
Number of COEs Receiving Additional State Aid for MSA Guarantee	21
Amount of Additional State Aid for MSA Guarantee	\$ 95,053,080

### LCFF Target Entitlement Calculation

LCFF Target Components	Number of COEs Represented	Amount
Base Grant Funding	53	\$ 170,018,084
Supplemental Grant Funding	53	53,234,389
Concentration Grant Funding	52	<u>23,631,540</u>
Alternative Education Grant (subtotal)		\$ 246,884,013
Operations Grant Funding	58	447,764,369
Add-on Funding	37	<u>30,857,341</u>
<b>Total LCFF Target Entitlement</b>		<b>\$ 725,505,723</b>

Alternative Education Grant Average Daily Attendance (ADA)	
Non-Juvenile Court School ADA	8,726.32
Juvenile Court School ADA	6,150.29
<b>Total County Funded ADA</b>	<b>14,876.61</b>
Unduplicated Pupil Percentage (UPP)	
Average UPP (Non-Juvenile Court School)	81.30%
Lowest non-zero UPP (Non-Juvenile Court School)	40.00%

### III. SCHOOL DISTRICT AND CHARTER SCHOOL DATA

#### LCFF Transition Entitlement Summary

LCFF Transition Components	School Districts Receiving Funding			Charter Schools Receiving Funding			Total	
	Number	% of Districts	Amount	Number	% of Charters	Amount	Number of LEAs	Amount
LCFF Floor Entitlement	893	94%	\$ 47,551,038,078	1,163	94%	\$ 4,772,685,722	2,056	\$ 52,323,723,800
Current Year Gap Funding	893	94%	2,756,839,857	1,163	94%	274,439,182	2,056	3,031,279,039
LCFF Target Entitlement*	52	6%	60,764,737	59	5%	171,248,489	111	232,013,226
Economic Recovery Target Payments	122	13%	29,598,086	23	2%	1,010,811	145	30,608,897
State Aid for MSA Guarantee	146	15%	116,252,385	13	1%	721,771	159	116,974,156
Miscellaneous Adjustments	8	1%	(1,590,130)	<i>not applicable to charter schools</i>			8	(1,590,130)
<b>Total LCFF Transition Entitlement**</b>			<b>\$50,512,903,013</b>			<b>\$5,220,105,975</b>		<b>\$55,733,008,988</b>

\*Final determination of LEAs funded at the LCFF Target is made at the Second Principal Apportionment.

\*\*Total LCFF Transition Entitlement is less than Total LCFF Funding Sources (shown on page 1) due to EPA State Aid minimum guarantee.

#### LCFF Target Entitlement Calculation

LCFF Target Components	School Districts Represented			Charter Schools Represented			Total	
	Number	% of Districts	Amount	Number	% of Charters	Amount	Number of LEAs	Amount
Base Grant Funding*	907	96%	\$ 42,758,327,149	1,222	99.2%	\$ 4,604,370,660	2,129	\$ 47,362,697,809
Supplemental Grant Funding	945	100%	5,319,708,677	1,222	99.2%	556,089,594	2,167	5,875,798,271
Concentration Grant Funding	545	58%	3,034,256,316	695	56.4%	272,872,751	1,240	3,307,129,067
Necessary Small School (NSS) Allowance	111	12%	95,291,546	<i>not applicable to charter schools</i>			111	95,291,546
Add-on Funding	916	97%	1,320,405,271	<i>not applicable to charter schools</i>			916	1,320,405,271
<b>Total LCFF Target Entitlement</b>			<b>\$ 52,527,988,959</b>			<b>\$ 5,433,333,005</b>		<b>\$ 57,961,321,964</b>

\*Some school districts are fully funded through NSS and do not receive Base Grant Funding; some charter schools have no Base Grant Funding due to zero funded ADA.

#### Total Funded ADA by Grade Span (includes NSS ADA)

LEA Type	Number of LEAs	TK/K-3	4-6	7-8	9-12	TOTAL ADA
School Districts	945	1,676,852.02	1,270,193.69	819,348.97	1,649,424.08	5,415,818.76
Charter Schools	1,232	160,278.97	122,783.53	94,240.66	201,185.63	578,488.79
<b>TOTAL</b>	<b>2,177</b>	<b>1,837,130.99</b>	<b>1,392,977.22</b>	<b>913,589.63</b>	<b>1,850,609.71</b>	<b>5,994,307.55</b>

DATA SOURCE: 2016–17 Second Principal Apportionment certified funding exhibits for all active LEAs for the fiscal year (<http://www.cde.ca.gov/fg/aa/pa/pa1617.asp>)

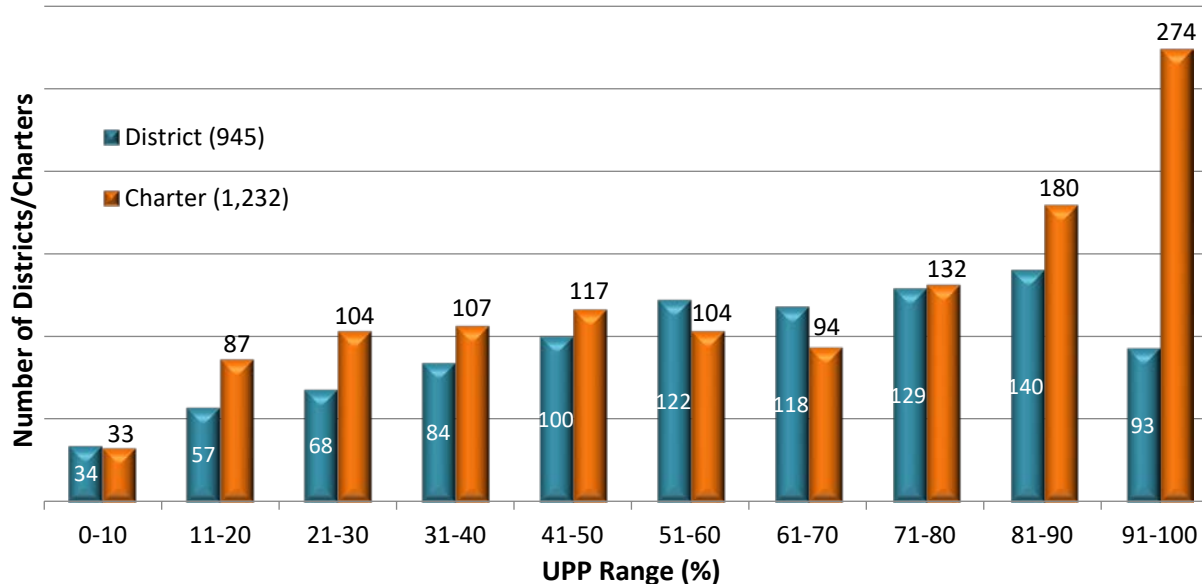
### III. SCHOOL DISTRICT AND CHARTER SCHOOL DATA

#### Unduplicated Pupil Percentage (UPP)\*

School Districts' Average UPP	58.78%
Districts with UPP of 100%	1
Districts with UPP of zero	0
Charter Schools' Average UPP	62.37%
Charters with UPP of 100%	5
Charters with UPP of zero	1

\*UPP is based on data from current and two prior years and is used in determining the LEA's Supplemental and Concentration Grant funding in the LCFF Target Entitlement.

#### UPP Ranges for School Districts and Charter Schools



#### Ten Largest School Districts (based on ADA)

School District Name	ADA	Target per ADA**	UPP
Los Angeles Unified	458,977.01	\$11,524	84.06%
San Diego Unified	101,082.65	\$9,936	63.11%
Long Beach Unified	74,231.83	\$9,802	69.62%
Fresno Unified	66,810.59	\$10,680	88.22%
Elk Grove Unified	59,907.31	\$9,003	58.07%
Corona-Norco Unified	51,458.89	\$8,741	47.18%
San Francisco Unified	50,683.90	\$10,052	63.69%
Santa Ana Unified	50,114.85	\$10,955	94.03%
Capistrano Unified	47,655.12	\$8,402	23.28%
San Bernardino City Unified	47,358.14	\$11,120	90.51%

#### Ten Largest Charter Schools (based on ADA)

Charter School Name	ADA	Target per ADA**	UPP
River Springs Charter	5,860.04	\$8,481	48.66%
Visions In Education	5,056.36	\$8,881	50.01%
Granada Hills Charter High	4,537.83	\$9,701	51.11%
El Camino Real Charter High	3,386.70	\$9,203	22.83%
Capistrano Connections Academy	3,212.92	\$8,796	39.53%
Inspire Charter School - South	3,157.93	\$8,215	30.43%
Grover Cleveland Charter High	3,063.57	\$10,444	65.96%
Birmingham Community Charter High	2,969.62	\$11,581	85.31%
Options for Youth-Victorville Charter	2,961.46	\$11,207	81.43%
Opportunities for Learning - Baldwin Park II	2,919.41	\$11,596	86.17%

\*\*LCFF Target per ADA is derived by dividing LCFF Target Entitlement by Funded ADA. This amount does not represent actual funding. Target per ADA rates vary due to differences in UPP, the distribution of ADA between the grade spans, and other components of the Target Entitlement.